

Son Armadams, Palma de Mallorca

REF. APM2606004

Penthouse for long-term rent in Son Armadams

Features

Surface

75 m²

Bedrooms

2

Bathrooms

2

✓ Furnished

✓ Terrace

Price

2,000 €



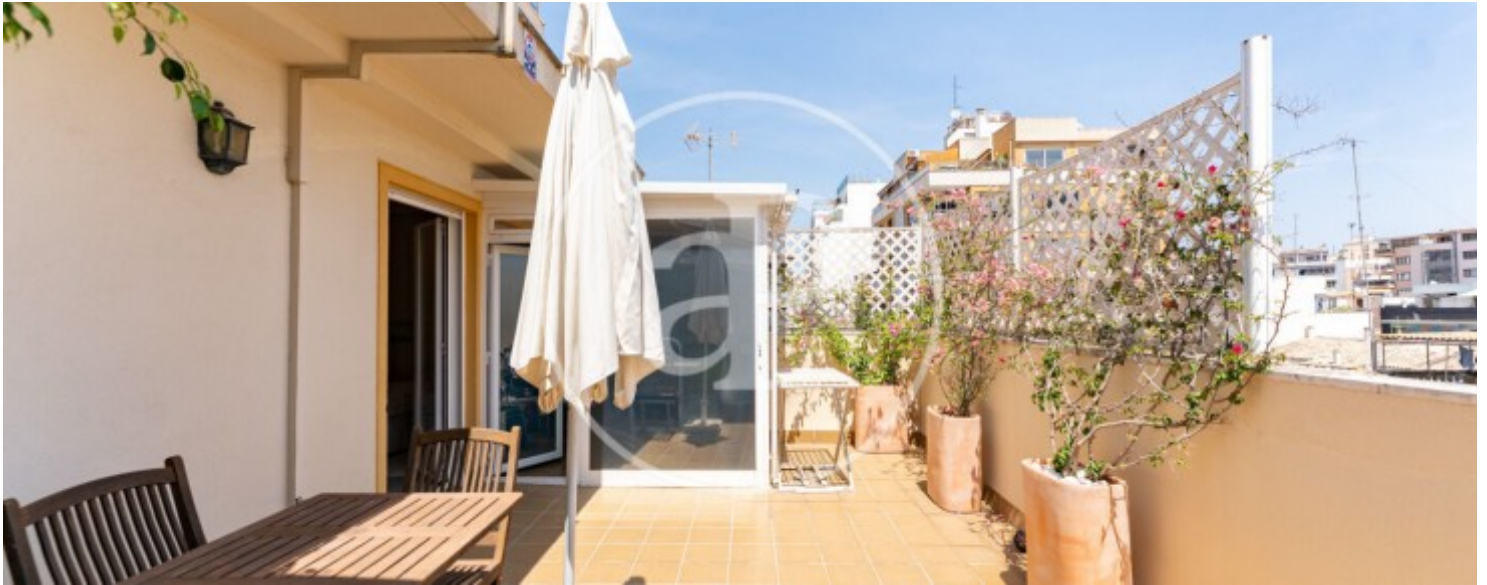
Located in the highly sought-after area of Son Armadams, this penthouse offers 75 sqm of interior living space and a spacious 40 sqm private terrace, just a short walk from the Paseo Marítimo and close to the iconic Santa Catalina Market. The property stands out for its brightness and practical layout, perfectly combining comfortable indoor living with exceptional outdoor space. It features a welcoming living-dining room connected to a charming glazed winter dining area, ideal as a versatile space with direct access to the terrace, allowing natural light to flood the home throughout the day. The kitchen is separate and fully equipped, offering practicality and convenience. The apartment offers two exterior bedrooms. The spacious master bedroom features built-in wardrobes, an en-suite bathroom

and direct access to the terrace. The second bedroom is ideal as a guest room, home office or multifunctional space. There are also two full bathrooms with walk-in showers. One of the property's main highlights is its generous terrace, offering multiple possibilities with an outdoor dining area, chill-out space, lush greenery providing privacy and a practical storage room. Additional features include air conditioning, gas central heating with radiators, double-glazed windows, tiled flooring and built-in wardrobes. This is a bright and comfortable home located in a peaceful building,...

Contact us,
we will be happy to assist you,
to offer you more details and information.

Son Armadams, Palma de Mallorca

REF. APM2606004



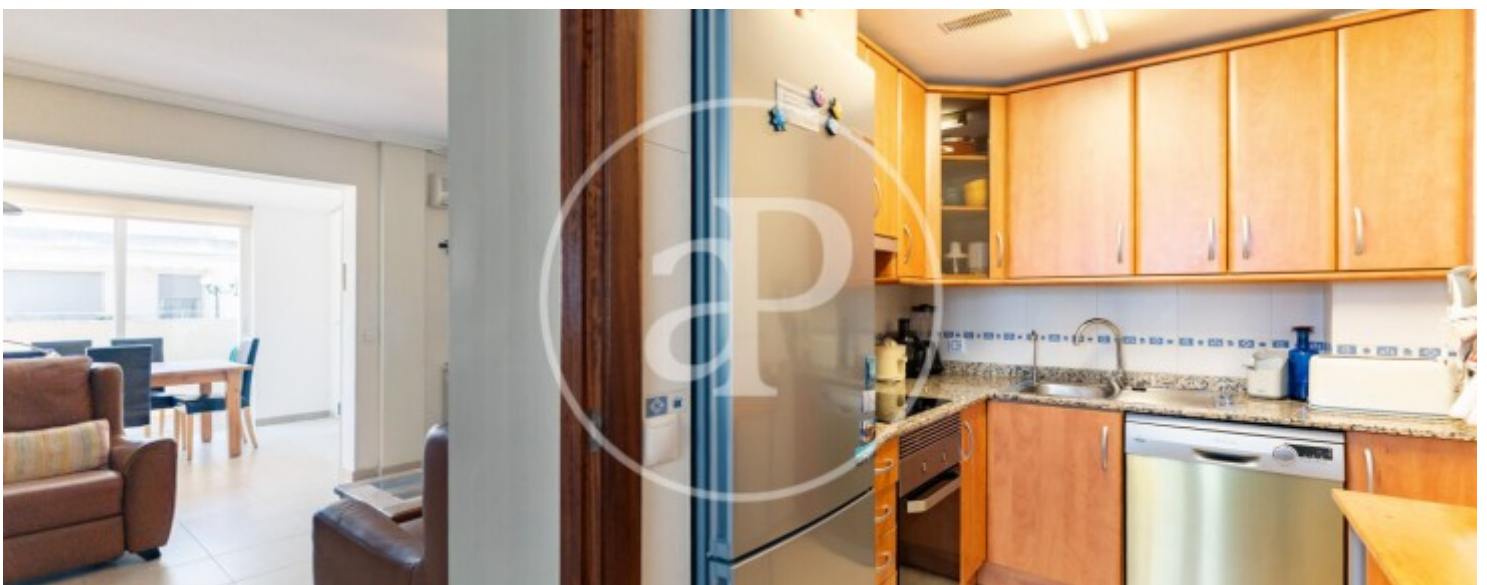
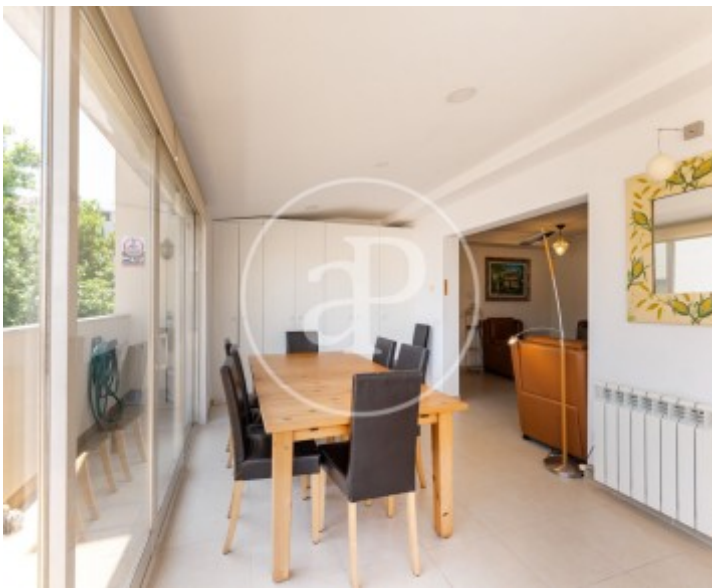
Son Armadams, Palma de Mallorca

REF. APM2606004



Son Armadams, Palma de Mallorca

REF. APM2606004



Son Armadams, Palma de Mallorca

REF. APM2606004



The information about any property is not binding to any offer or contract. Any verbal or written declaration made by aProperties with regards to the value or condition of the property should not be considered accurate or factual. The pictures make reference to some parts of the property at the times that they were taken. The areas, dimensions and distances that are given are approximate and should be checked by the client. The images are computer generated and are just an approximate indication of the real appearance of the property; these may change at any time. The information with regards to the property may also change at any time.

For **more information** or
to make an appointment

apropertiespalma@aproperties.es
Tel: 871 16 01 60
www.aproperties.es