

Son Armadams, Palma de Mallorca

REF. VPM2504002

Apartment for sale in Son Armadams

Features

- ✓ Views
- ✓ Boxroom
- ✓ Backyard
- ✓ Lift
- ✓ Heating
- ✓ Terrace
- ✓ Pool
- ✓ Has parking

Surface

198 m²

Bedrooms

4

Bathrooms

3



Price

1,500,000 €

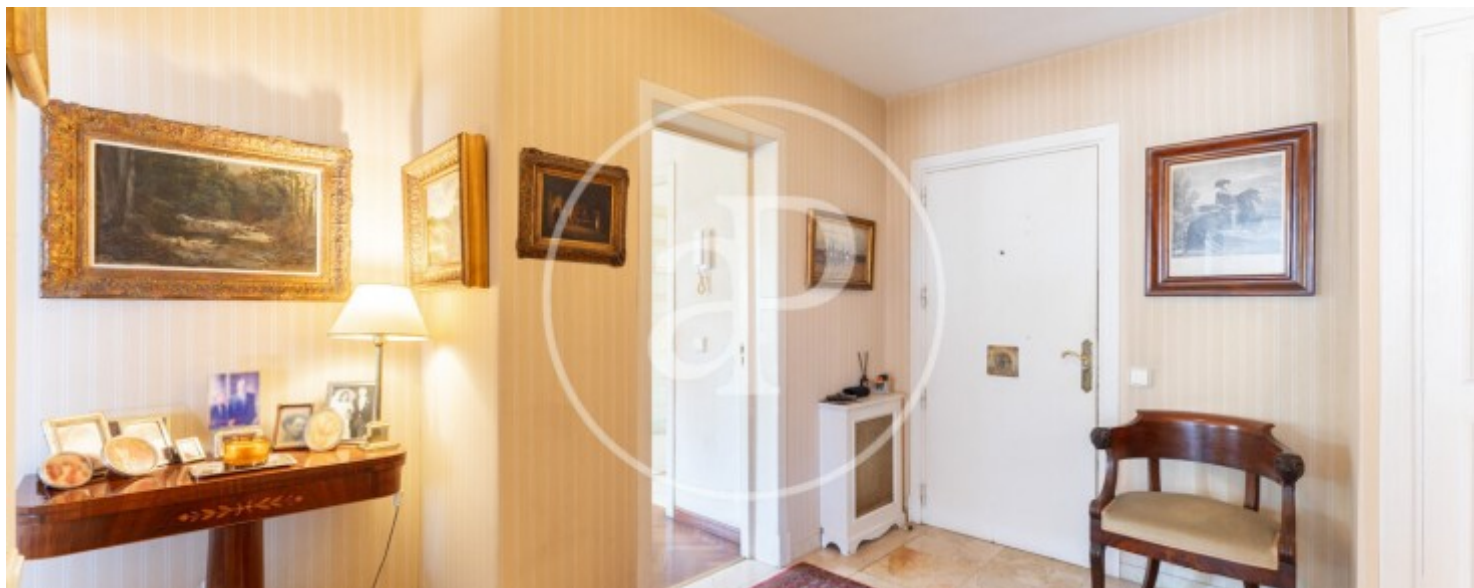
Located in the tranquil and sought-after residential area of Son Armadams, between the iconic Bellver Castle and the vibrant Paseo Marítimo, this spectacular apartment is surrounded by expansive green spaces and just a short distance from shops and commercial establishments as well as excellent public transportation. This property offers the comfort of living in a privileged area. This bright and spacious apartment, with four-way orientation, is situated in a small community of only five neighbors, with just one apartment per floor, ensuring total privacy. Additionally, the community features a garden and swimming pool. The property is efficiently distributed, with a clear distinction between the day and night areas. To the right of the entrance is a large, independent, exterior kitchen,

complete with a utility room, pantry, and an additional space currently used as a small living room. The hallway leads to a spacious and sunny living-dining room, which opens onto a large terrace offering stunning sea views. The night area consists of four double bedrooms, two of which are en suite, all exterior and equipped with built-in wardrobes, along with three full bathrooms. The property also includes gas central heating via radiators, two parking spaces, and a storage room, all included in the price. Although the apartment is well-maintained, it requires renovation to meet the new...

Contact us,
we will be happy to assist you,
to offer you more details and information.

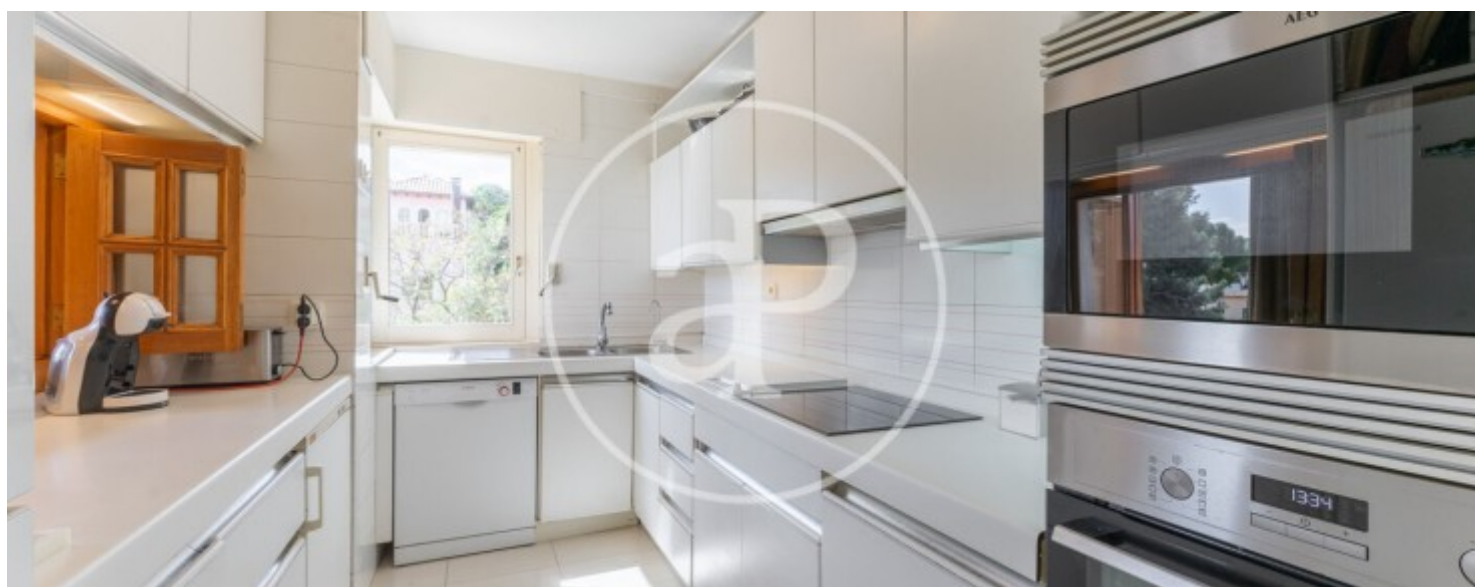
Son Armadams, Palma de Mallorca

REF. VPM2504002



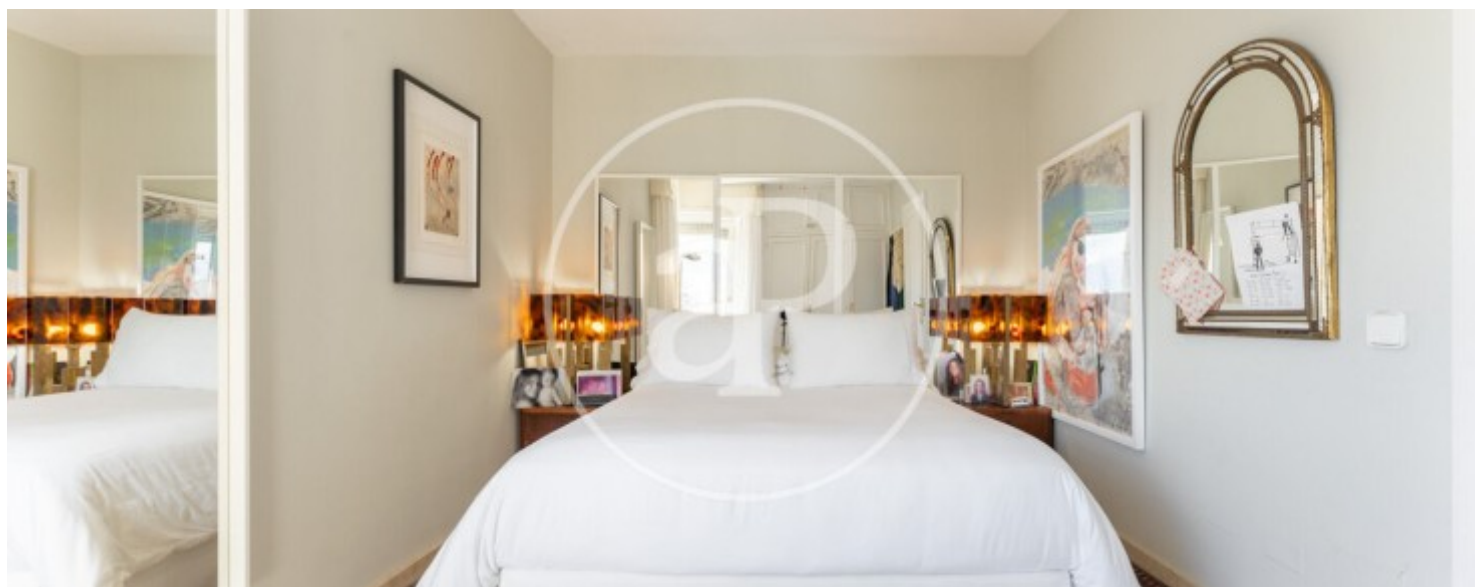
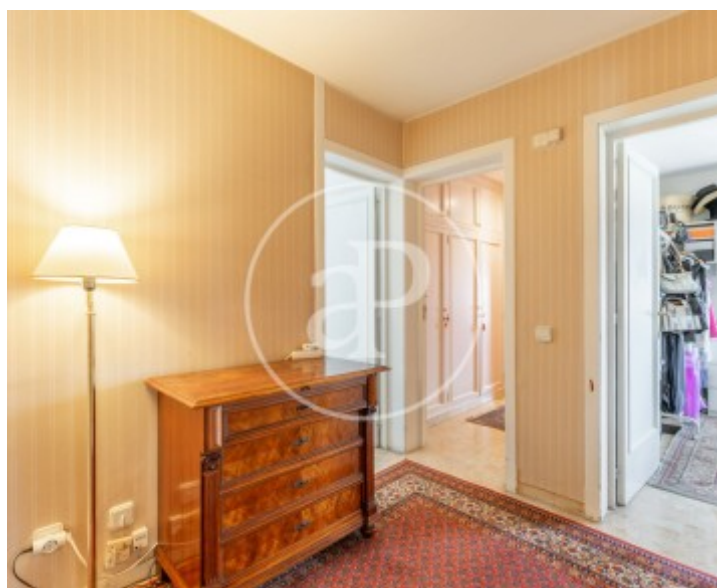
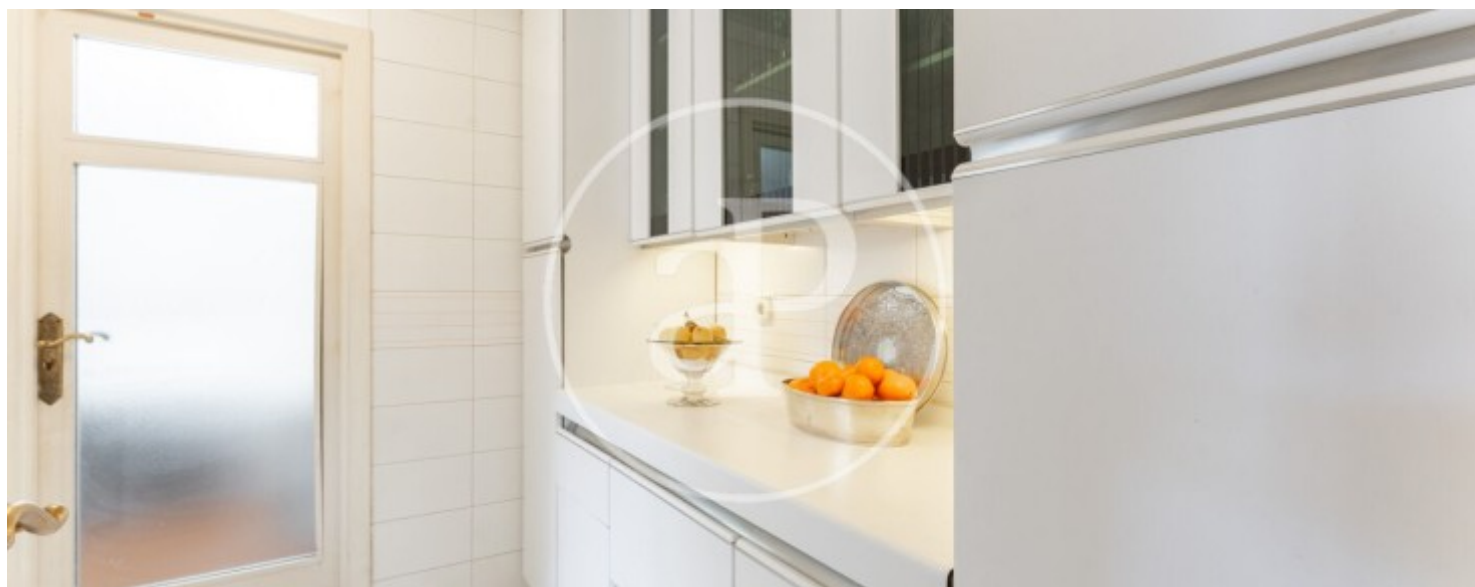
Son Armadams, Palma de Mallorca

REF. VPM2504002



Son Armadams, Palma de Mallorca

REF. VPM2504002



Son Armadams, Palma de Mallorca

REF. VPM2504002



The information about any property is not binding to any offer or contract. Any verbal or written declaration made by aProperties with regards to the value or condition of the property should not be considered accurate or factual. The pictures make reference to some parts of the property at the times that they were taken. The areas, dimensions and distances that are given are approximate and should be checked by the client. The images are computer generated and are just an approximate indication of the real appearance of the property; these may change at any time. The information with regards to the property may also change at any time.

For **more information** or
to make an appointment

apropertiespalma@aproperties.es
Tel: 871 16 01 60
www.aproperties.es