



Son Armadams, Palma de Mallorca

REF. VPM2511001

Flat for sale in Palma de Mallorca

Features

- ✓ Views
- ✓ AACC
- ✓ Backyard
- ✓ Has parking
- ✓ Heating
- ✓ Terrace
- ✓ Pool

Surface

185 m²

Bedrooms

3

Bathrooms

2

Price

760,000 €



A Perfect Family Home in the Heart of Palma
This charming property offers the ideal combination of comfort, space, and location — a perfect home for a family in central Palma.

The residence features three bedrooms, including a master suite with an en-suite bathroom and bathtub, plus two additional bedrooms served by a second bathroom with a shower. The spacious living area opens onto the front terrace with direct street access, creating a seamless flow between indoor and outdoor spaces. This area could easily be converted into a beautiful open-plan kitchen and living space, enhancing the sense of light and openness. A separate laundry room adds practicality,

while at the rear of the property you'll find two versatile rooms, currently used as an office and a cozy sitting area, both opening onto a back terrace. From here, there is direct access to the communal swimming pool and garden — perfect for families with small children to play or enjoy outdoor activities. Located on the border between Son Armadams and El Terreno, the property enjoys the best of both neighborhoods: within walking distance of the forest surrounding Castillo de Bellver, a short stroll to the Paseo Marítimo, and easy access to Palma's best schools,...

Contact us,
we will be happy to assist you,
to offer you more details and information.

Son Armadams, Palma de Mallorca

REF. VPM2511001



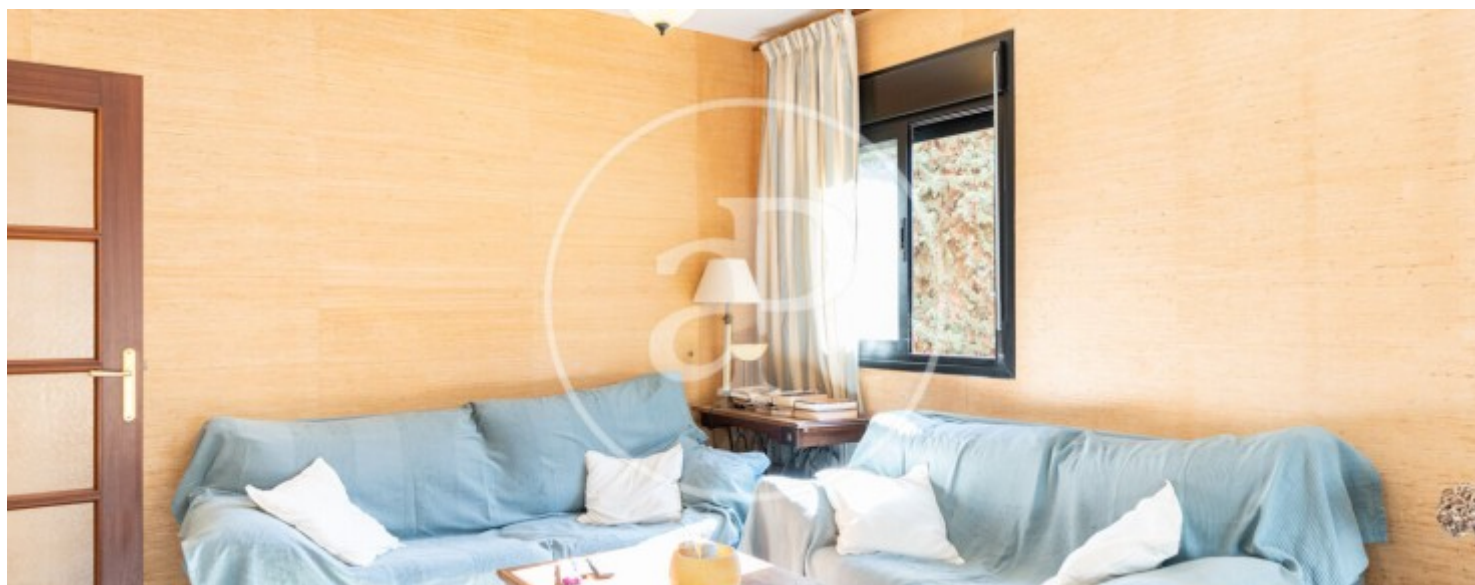
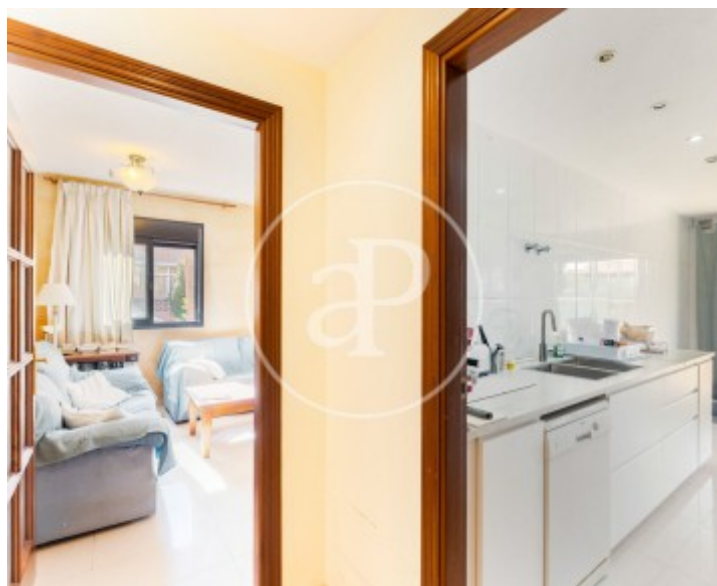
Son Armadams, Palma de Mallorca

REF. VPM2511001



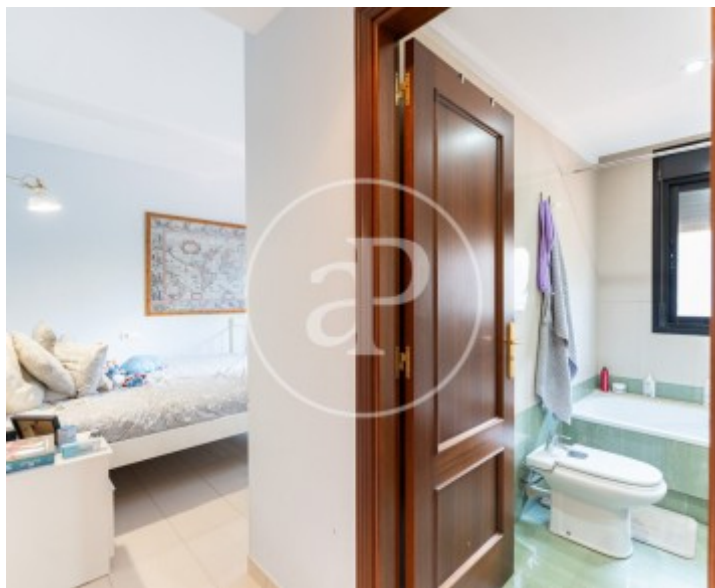
Son Armadams, Palma de Mallorca

REF. VPM2511001



Son Armadams, Palma de Mallorca

REF. VPM2511001



The information about any property is not binding to any offer or contract. Any verbal or written declaration made by aProperties with regards to the value or condition of the property should not be considered accurate or factual. The pictures make reference to some parts of the property at the times that they were taken. The areas, dimensions and distances that are given are approximate and should be checked by the client. The images are computer generated and are just an approximate indication of the real appearance of the property; these may change at any time. The information with regards to the property may also change at any time.

For **more information** or
to make an appointment

apropertiespalma@aproperties.es
Tel: 871 16 01 60
www.aproperties.es