

Son Armadams, Palma de Mallorca

REF. APM2605007

# Duplex penthouse for rent in Son Armadams

## Features

- ✓ Views
- ✓ Heating
- ✓ Furnished
- ✓ Boxroom
- ✓ AACC
- ✓ Terrace
- ✓ Lift
- ✓ Concierge
- ✓ Has parking

Surface

**178 m<sup>2</sup>**

Bedrooms

**4**

Bathrooms

**3**



Price

**3,900 €**

In the area of son armadams, very close to paseo marítimo, near shops, hotels and public transport, this exclusive duplex penthouse is located on the 9th and 10th floors, offering magnificent views of the mountains, the sea and unobstructed views of palma cathedral. It is a very bright 180m<sup>2</sup> apartment, ready to move into. The main door leads to the entrance hall, where we find a spacious and bright living-dining room of approximately 50m<sup>2</sup> with access to a generous 20m<sup>2</sup> terrace. The independent kitchen is fully furnished and equipped, offers sea views and includes a practical utility room with washing machine and dryer. In the sleeping area, the property features four double bedrooms, all with built-in wardrobes, one of them with an en suite bathroom and a private living area with

armchairs and television, as well as access to its own terrace, where the sunrise can be enjoyed. The apartment is completed by three full bathrooms with shower, one of them with hydromassage. It features air conditioning with hot/cold pump in all rooms and in the living-dining area, parquet floors, double-glazed windows, terrace with private storage room, two pantries and a walk-in wardrobe. A parking space in the same building is included. Ibi is included in the rental price, while community fees, water and electricity are to be paid by the tenant. Can you imagine living here? we look...

**Contact us,**  
we will be happy to assist you,  
to offer you more details and information.

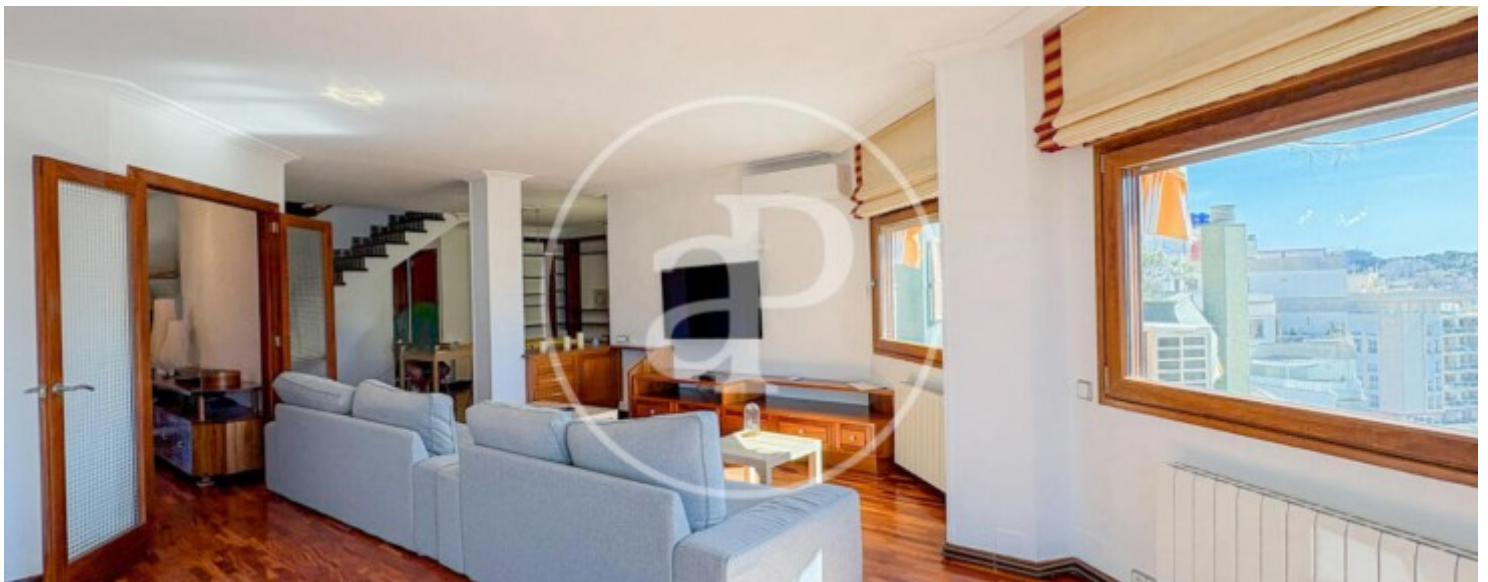
Son Armadams, Palma de Mallorca

REF. APM2605007



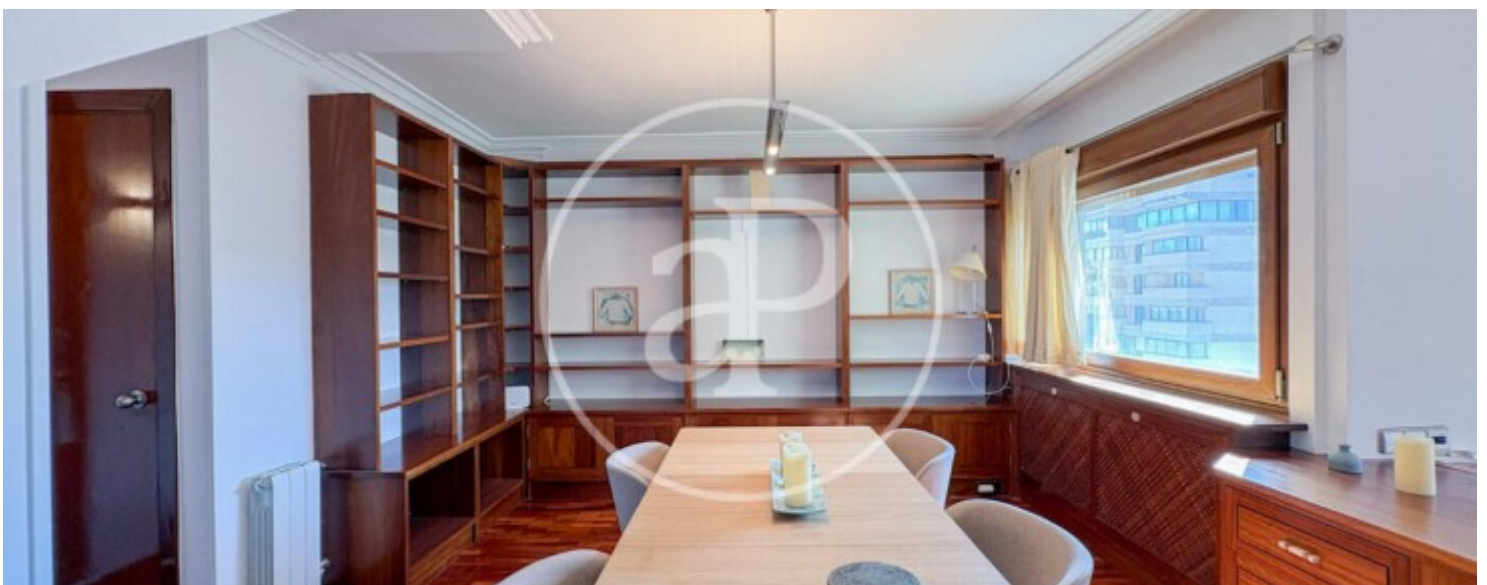
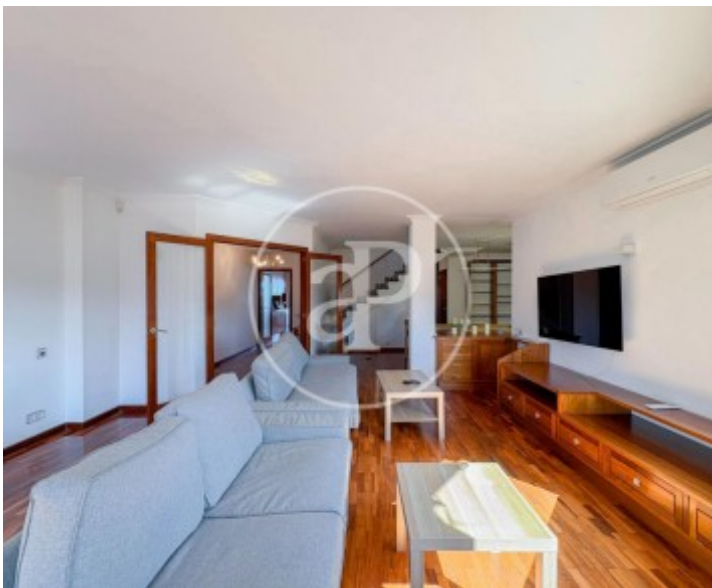
Son Armadams, Palma de Mallorca

REF. APM2605007



Son Armadams, Palma de Mallorca

REF. APM2605007



Son Armadams, Palma de Mallorca

REF. APM2605007



The information about any property is not binding to any offer or contract. Any verbal or written declaration made by aProperties with regards to the value or condition of the property should not be considered accurate or factual. The pictures make reference to some parts of the property at the times that they were taken. The areas, dimensions and distances that are given are approximate and should be checked by the client. The images are computer generated and are just an approximate indication of the real appearance of the property; these may change at any time. The information with regards to the property may also change at any time.

For **more information** or  
to make an appointment

[apropertiespalma@aproperties.es](mailto:apropertiespalma@aproperties.es)  
Tel: 871 16 01 60  
[www.aproperties.es](http://www.aproperties.es)