

Son Armadams, Palma de Mallorca

REF. APM2511006

# Penthouse for rent in Palma

## Features

- ✓ Views
- ✓ Heating
- ✓ Furnished
- ✓ AACC
- ✓ Terrace
- ✓ Lift
- ✓ Has parking

Price

**1,600 €**

Surface

**170 m<sup>2</sup>**

Bedroom

**1**

Bathroom

**1**



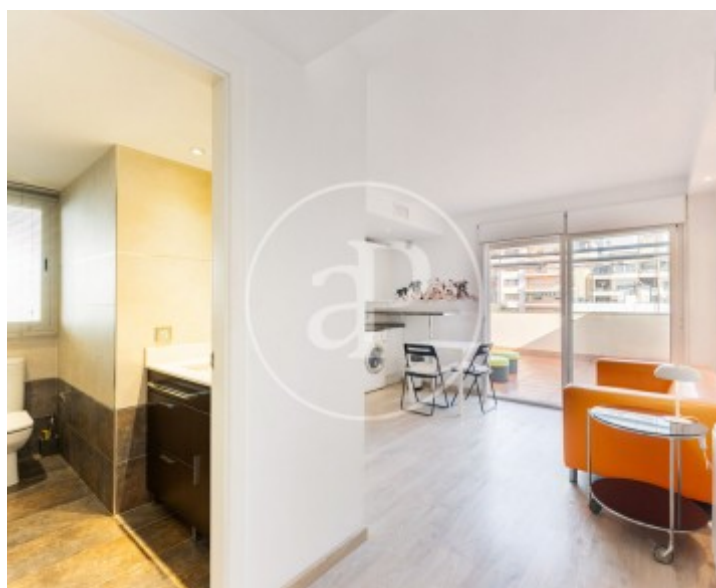
We present this magnificent penthouse in Palma, just steps from the popular Santa Catalina neighborhood, the center of Palma, and the Paseo Marítimo and a 7-minute walk from the Palma Tennis Club, one of Mallorca's most exclusive areas. This bright apartment combines urban comfort with the pleasure of enjoying ample outdoor space. The property offers approximately 70 m<sup>2</sup> of living space, plus a spectacular 100 m<sup>2</sup> private terrace, a true urban oasis perfect for relaxing, sunbathing, or enjoying al fresco dining with unobstructed views. With a modern and functional design, the apartment features one bedroom, a full bathroom, and a spacious living area that integrates the living and dining rooms with direct access to the terrace, creating a seamless connection between the interior and

exterior. Thanks to its orientation and height, the apartment receives abundant natural light throughout the day, creating a warm and inviting atmosphere. In short, an ideal home for a young person or couple looking for a home with personality, plenty of outdoor space, and a prime location in the heart of Palma. Parking is an additional cost. Can you imagine living there?

**Contact us,**  
we will be happy to assist you,  
to offer you more details and information.

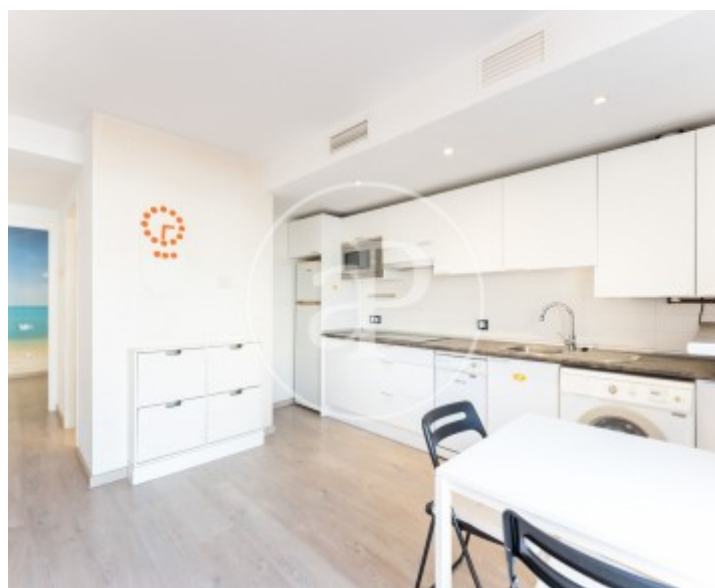
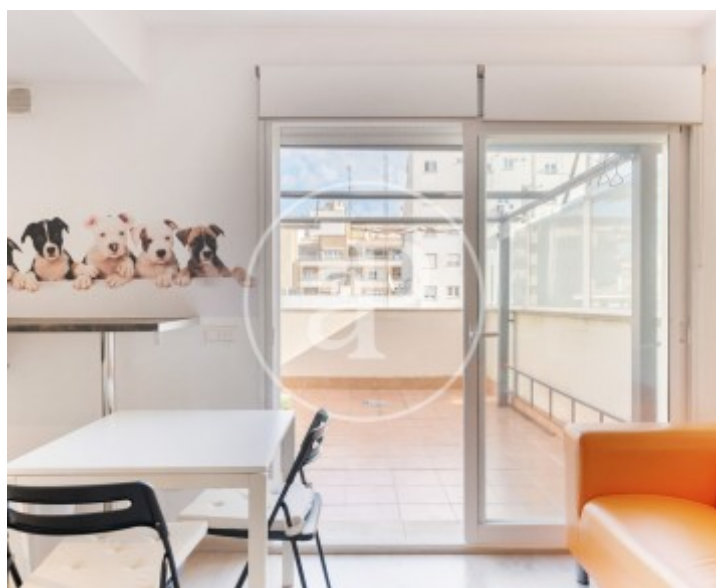
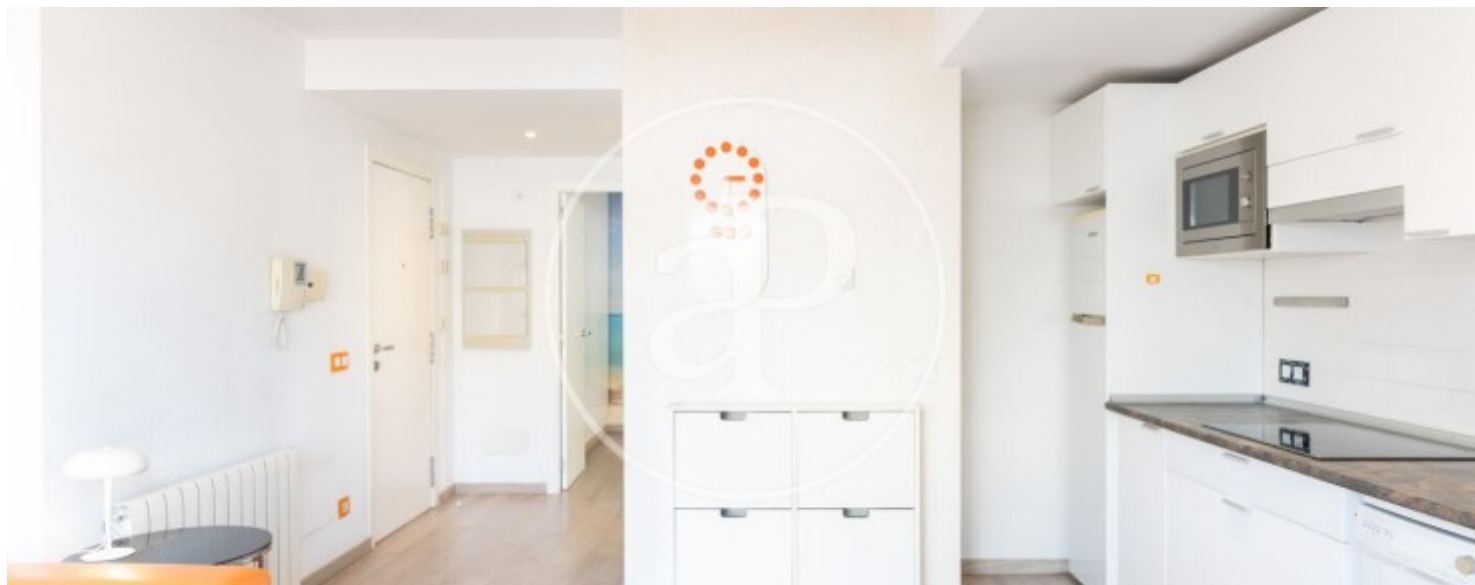
Son Armadams, Palma de Mallorca

REF. APM2511006



Son Armadams, Palma de Mallorca

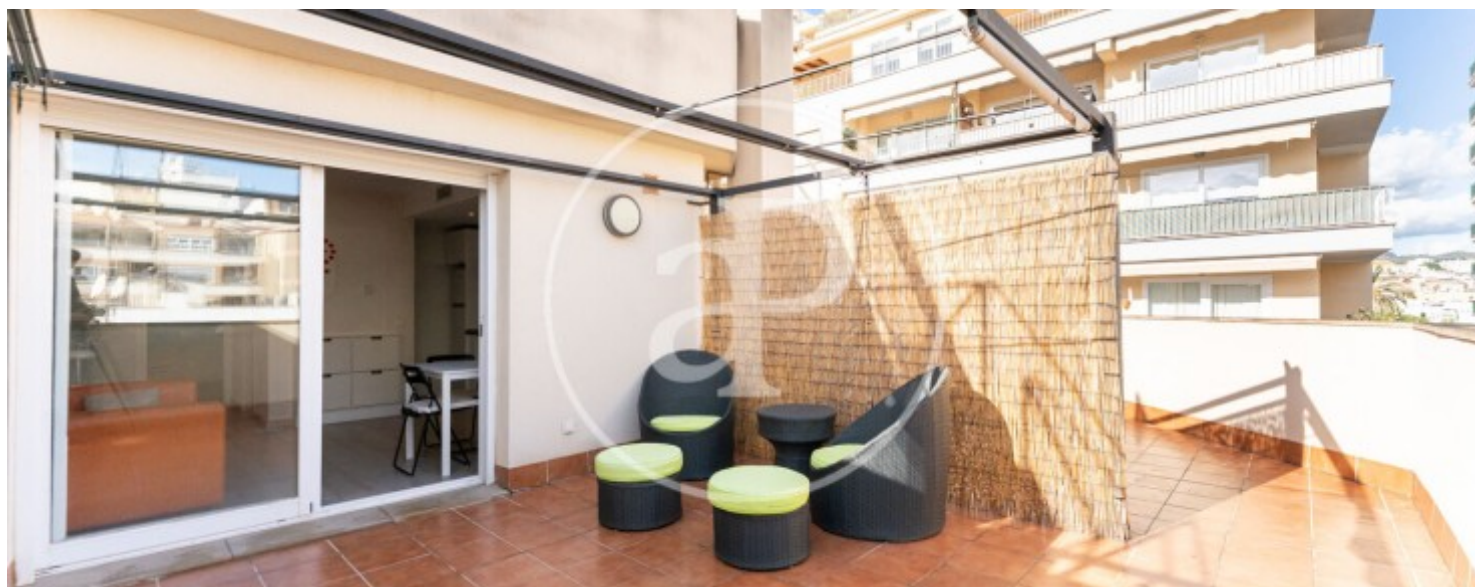
REF. APM2511006





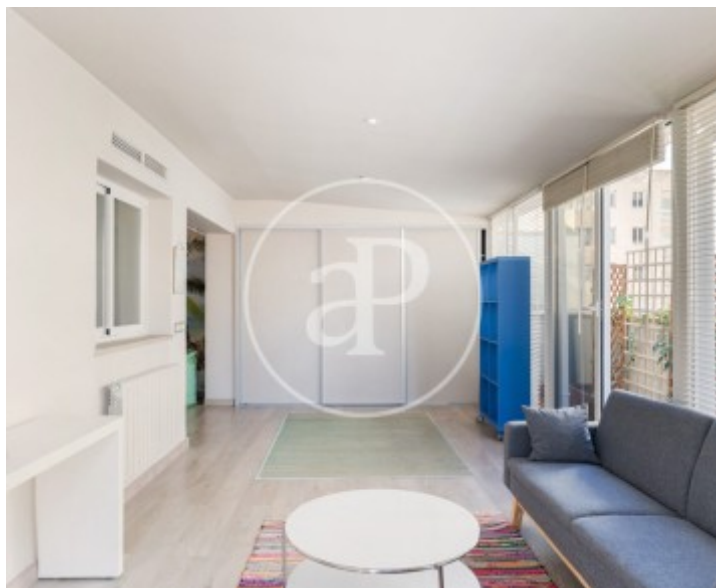
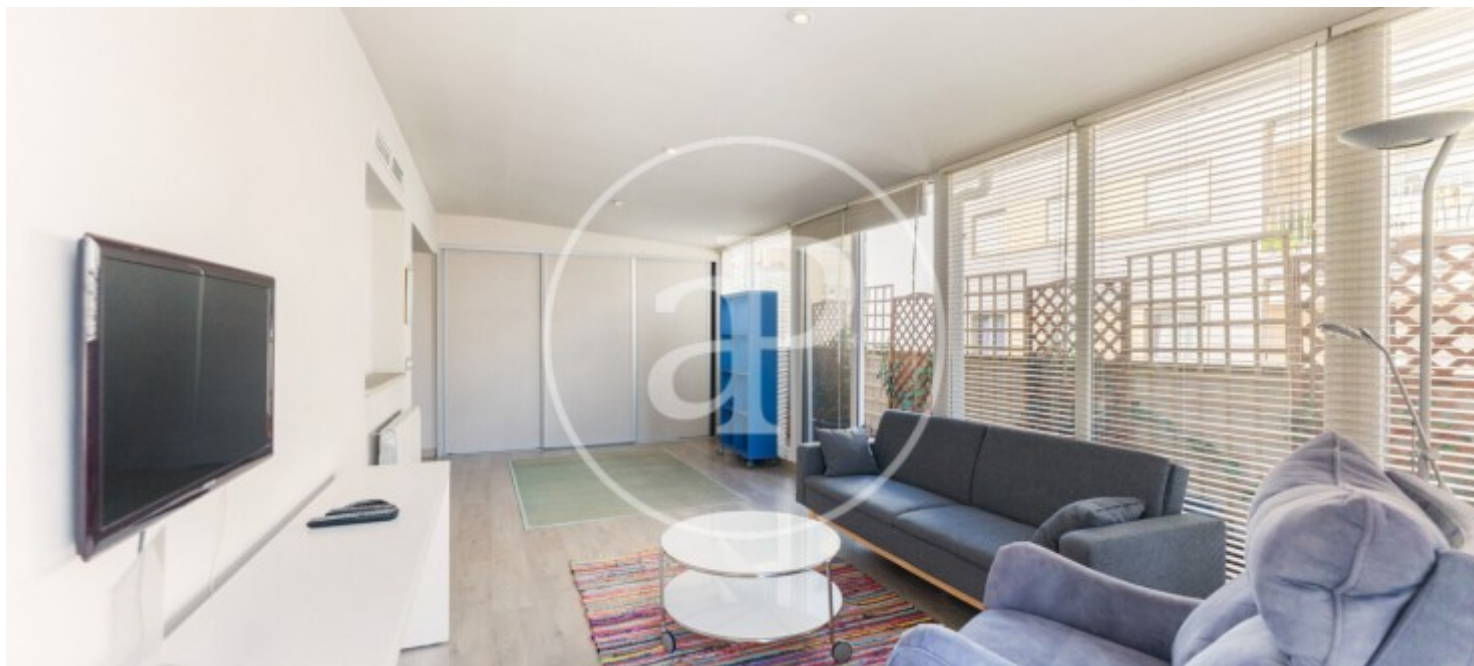
Son Armadams, Palma de Mallorca

REF. APM2511006



Son Armadams, Palma de Mallorca

REF. APM2511006



The information about any property is not binding to any offer or contract. Any verbal or written declaration made by aProperties with regards to the value or condition of the property should not be considered accurate or factual. The pictures make reference to some parts of the property at the times that they were taken. The areas, dimensions and distances that are given are approximate and should be checked by the client. The images are computer generated and are just an approximate indication of the real appearance of the property; these may change at any time. The information with regards to the property may also change at any time.

For **more information** or  
to make an appointment

[apropertiespalma@aproperties.es](mailto:apropertiespalma@aproperties.es)  
Tel: 871 16 01 60  
[www.aproperties.es](http://www.aproperties.es)