

Son Armadams, Palma de Mallorca

REF. APM2606001

Long-term rental apartment in Son Armadams

Features

- ✓ Heating
- ✓ Furnished
- ✓ Terrace
- ✓ Lift

Surface

105 m²

Bedrooms

3

Bathrooms

2

Price

2,200 €



Located in the sought-after residential area of Son Armadams, this magnificent 105 sqm apartment stands out for its excellent layout, abundant natural light and, above all, its impressive 110 sqm private terrace, a true luxury in the heart of the city. The property features a spacious living-dining room flooded with natural light thanks to its large bay windows, creating a bright and welcoming atmosphere with ample space for different living areas. From here, there is access to a pleasant exterior balcony. The separate fully equipped kitchen combines design and functionality. It features modern light-coloured cabinetry, integrated appliances and a practical central island, ideal both for cooking and informal dining. The kitchen also enjoys direct access to the terrace, creating a seamless connection

between indoor and outdoor living spaces. The sleeping area comprises three spacious double bedrooms, all with fitted wardrobes providing excellent storage capacity. Two of the bedrooms are equipped with ceiling fans for added comfort. The apartment benefits from pleasant cross ventilation and an orientation that ensures a cool and comfortable environment throughout the year. There are two modern full bathrooms with walk-in showers, both stylishly designed and perfectly distributed. Without a doubt, the highlight of this property is its extraordinary 110 sqm private terrace, a sunny and...

Contact us,
we will be happy to assist you,
to offer you more details and information.

Son Armadams, Palma de Mallorca

REF. APM2606001



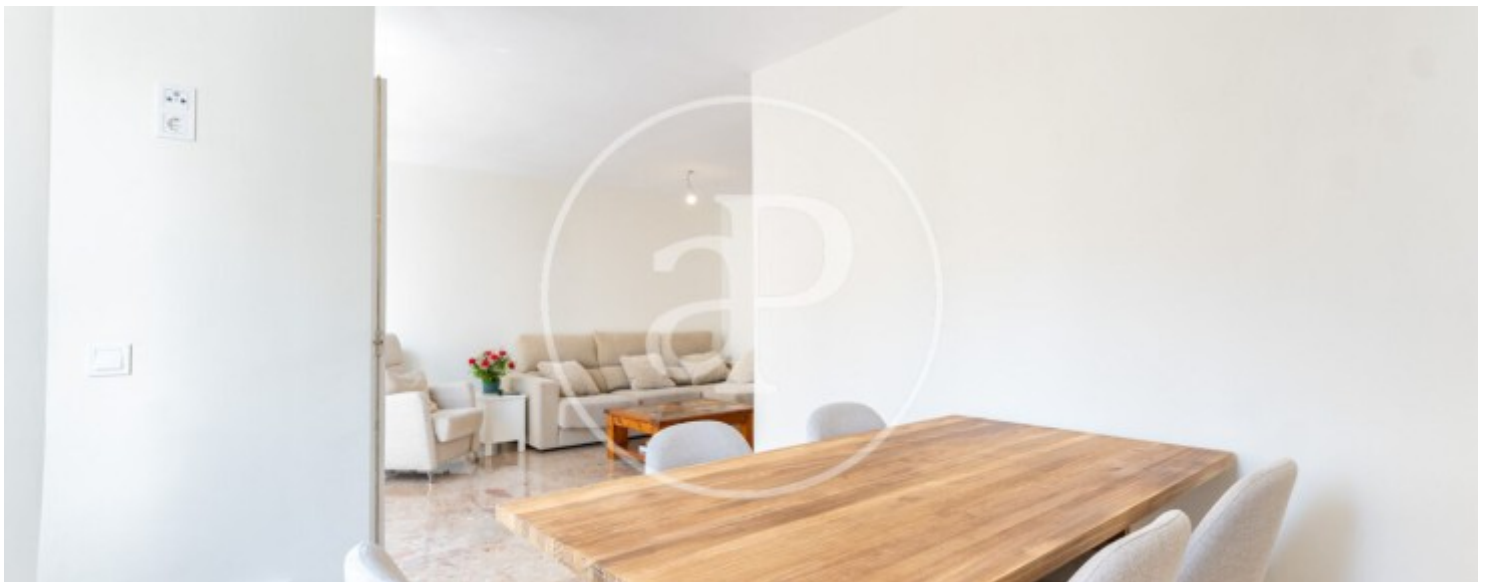
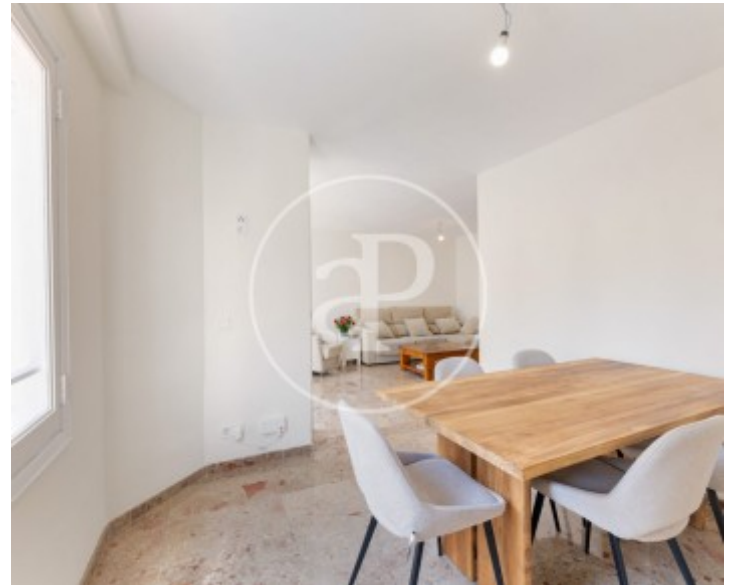
Son Armadams, Palma de Mallorca

REF. APM2606001



Son Armadams, Palma de Mallorca

REF. APM2606001



Son Armadams, Palma de Mallorca

REF. APM2606001



The information about any property is not binding to any offer or contract. Any verbal or written declaration made by aProperties with regards to the value or condition of the property should not be considered accurate or factual. The pictures make reference to some parts of the property at the times that they were taken. The areas, dimensions and distances that are given are approximate and should be checked by the client. The images are computer generated and are just an approximate indication of the real appearance of the property; these may change at any time. The information with regards to the property may also change at any time.

For **more information** or
to make an appointment

apropertiespalma@aproperties.es
Tel: 871 16 01 60
www.aproperties.es