

Son Anglada, Palma de Mallorca

REF. APM2603015

# House for rent in Son Anglada

## Features

- ✓ Views
- ✓ AACC
- ✓ Backyard
- ✓ Has parking
- ✓ Heating
- ✓ Terrace
- ✓ Pool

Surface

**310 m<sup>2</sup>**

Bedrooms

**5**

Bathrooms

**5**



Price

**Price upon request**

Just 10 minutes from Palma city center, yet with the peace of the countryside, this magnificent two-story house of 310 m<sup>2</sup> is surrounded by a well-maintained garden and a natural setting perfect to relax. From the entrance, you reach a foyer leading to a spacious and bright living-dining room, with access to a terrace offering stunning views, and a modern kitchen with a separate laundry area. On the main floor, the master bedroom features a walk-in closet and en-suite bathroom with a shower, along with a study convertible into a bedroom and a guest toilet, all with access to terraces. The upper floor, the night area, includes a living room, 3 double bedrooms with fitted wardrobes and en-suite bathrooms (two with showers and one with a bathtub), all with terrace access and unobstructed

views. Built in 2017, the house features ducted air conditioning, oil heating, wooden carpentry, double-glazed windows, a wood stove in the living room, well, and solar panel. Outdoors, there's a saltwater pool, multiple parking spaces, and a beautiful garden. Excellent location, close to the Green Valley English School, Son Gual Equestrian Center, and several golf courses nearby. Pets are allowed and immediate availability.

**Contact us,**  
we will be happy to assist you,  
to offer you more details and information.

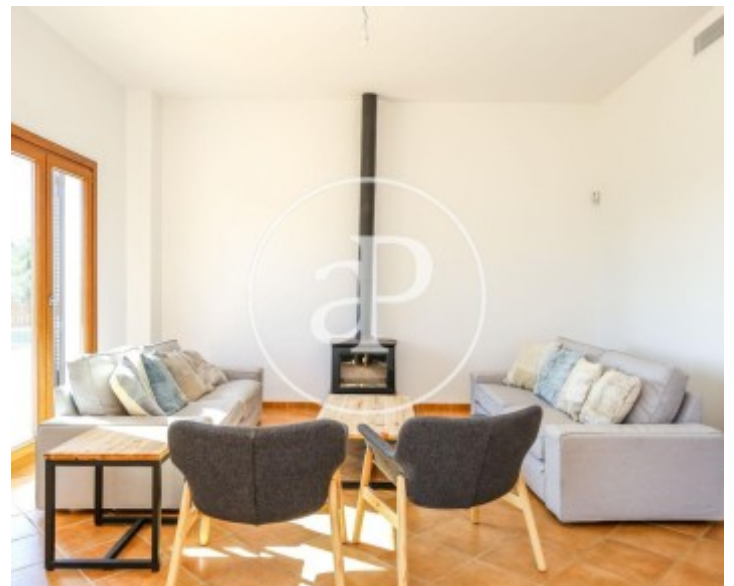
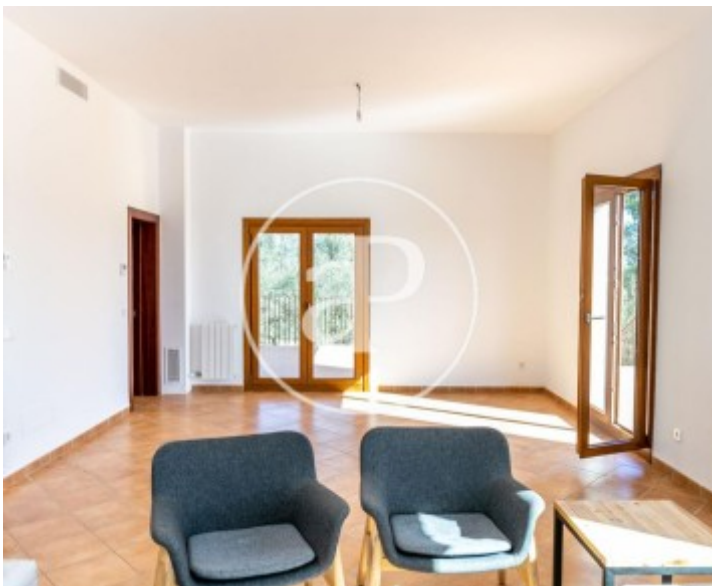
Son Anglada, Palma de Mallorca

REF. APM2603015



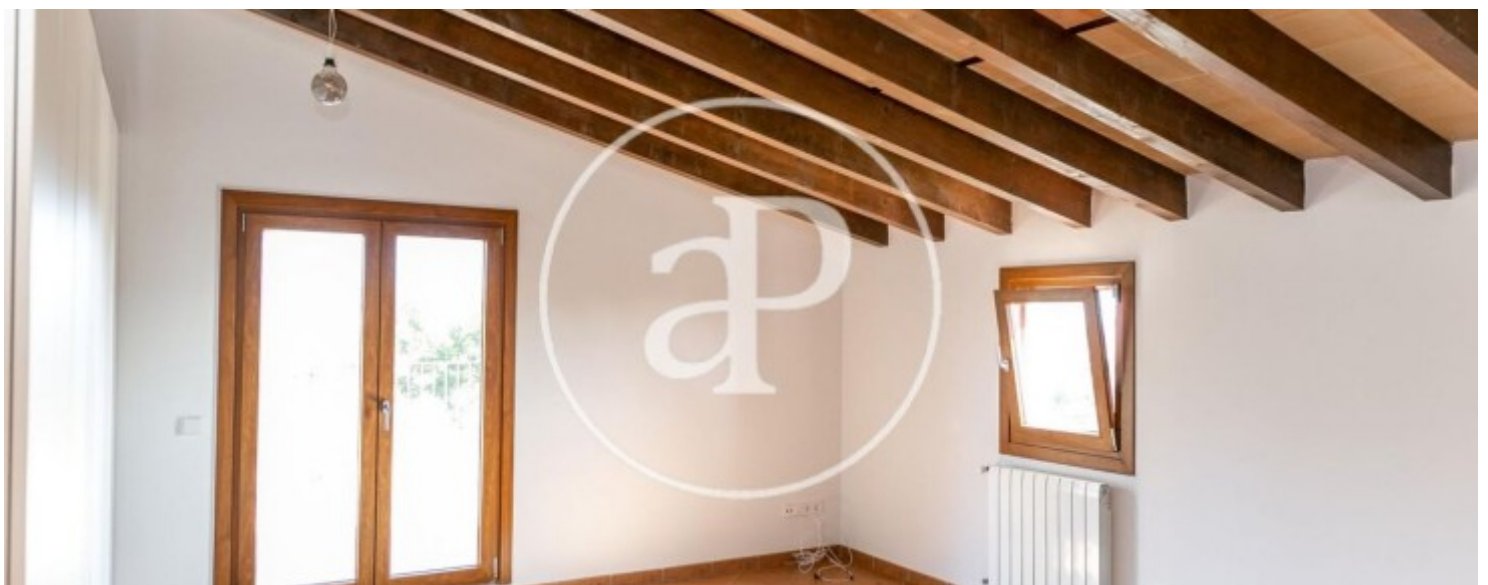
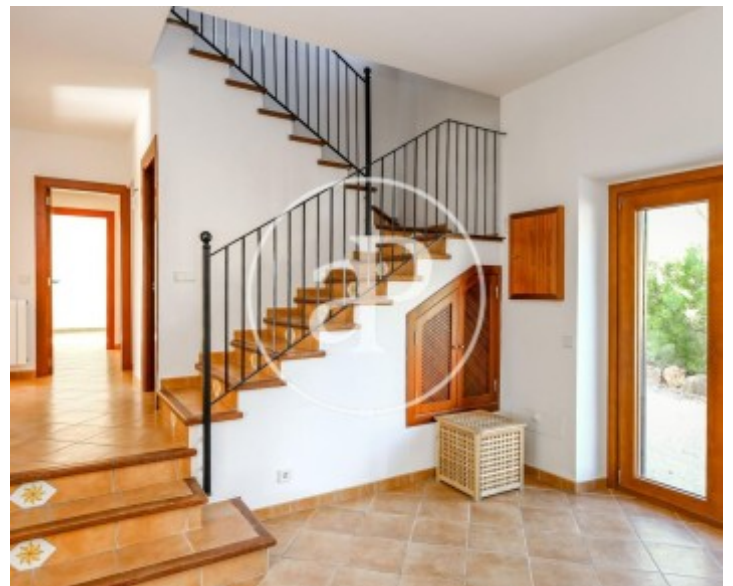
Son Anglada, Palma de Mallorca

REF. APM2603015



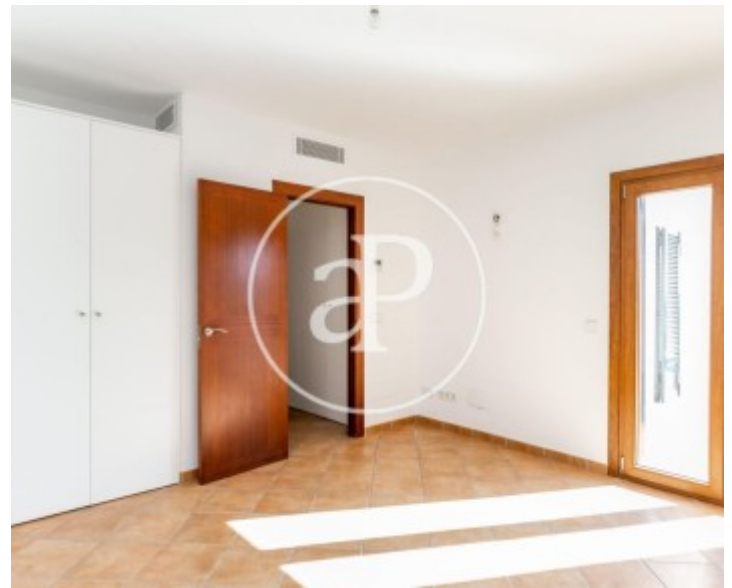
Son Anglada, Palma de Mallorca

REF. APM2603015



Son Anglada, Palma de Mallorca

REF. APM2603015



The information about any property is not binding to any offer or contract. Any verbal or written declaration made by aProperties with regards to the value or condition of the property should not be considered accurate or factual. The pictures make reference to some parts of the property at the times that they were taken. The areas, dimensions and distances that are given are approximate and should be checked by the client. The images are computer generated and are just an approximate indication of the real appearance of the property; these may change at any time. The information with regards to the property may also change at any time.

For **more information** or  
to make an appointment

[apropertiespalma@aproperties.es](mailto:apropertiespalma@aproperties.es)  
Tel: 871 16 01 60  
[www.aproperties.es](http://www.aproperties.es)