

Sindicat, Palma de Mallorca

REF. VPM2606017

Studio apartment for sale in Plaza Raimundo Clar

Features

- ✓ Heating
- ✓ Boxroom
- ✓ Gym
- ✓ Has parking
- ✓ Furnished
- ✓ AACC
- ✓ Lift

Price

349,000 €

Surface

54 m²

Bedroom

1

Bathroom

1



Magnificent designer apartment located in the heart of Palma de Mallorca, in the emblematic and increasingly sought-after neighbourhood of Sa Gerreria.

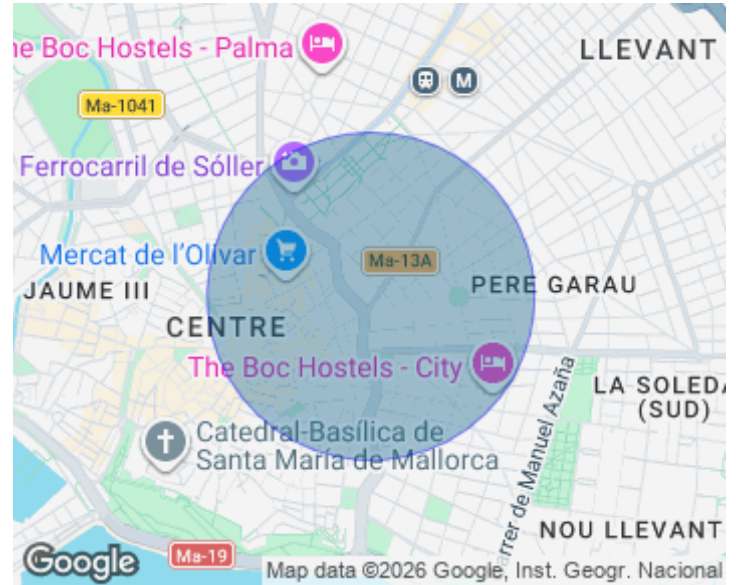
A privileged location that allows you to enjoy the city on foot, with immediate access to all services, shops, leisure areas and some of Palma's most iconic landmarks, such as Plaza de España, Mercado de S'Olivar, the Cathedral, museums, galleries, renowned restaurants and cafés. This property is ideal both for those seeking a functional and elegant home in the city centre and for investors looking to acquire a property in one of Palma's most in-demand areas. The apartment offers a comfortable and

well-utilised layout. It features a cosy open-plan living and dining area that integrates seamlessly with a modern designer kitchen, fully equipped with appliances and ample storage space. The interiors have been designed to maximise space, natural light and comfort, creating a contemporary and welcoming atmosphere. The main bedroom stands out for its generous dimensions and peaceful ambience, making it the perfect place to relax. The bathroom, with modern lines and contemporary finishes, completes a home designed for everyday comfort and functionality. Notable features include parquet...

Contact us,
we will be happy to assist you,
to offer you more details and information.

Sindicat, Palma de Mallorca

REF. VPM2606017



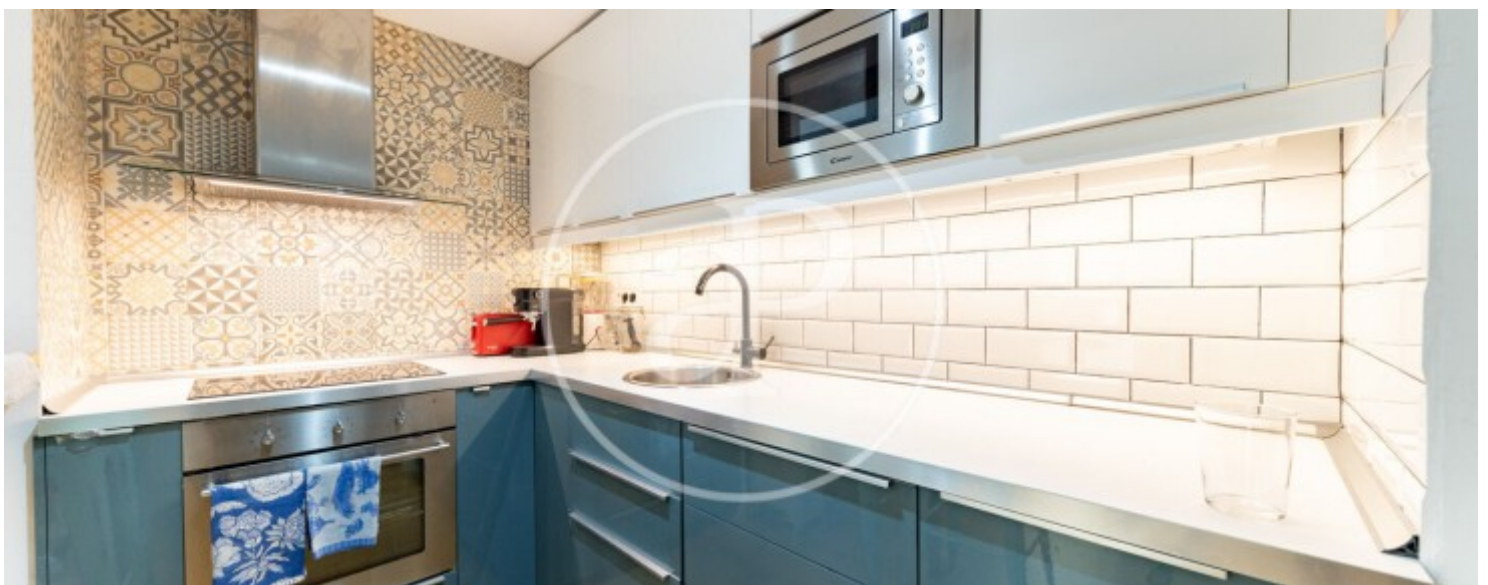
Sindicat, Palma de Mallorca

REF. VPM2606017



Sindicat, Palma de Mallorca

REF. VPM2606017



Sindicat, Palma de Mallorca

REF. VPM2606017



The information about any property is not binding to any offer or contract. Any verbal or written declaration made by aProperties with regards to the value or condition of the property should not be considered accurate or factual. The pictures make reference to some parts of the property at the times that they were taken. The areas, dimensions and distances that are given are approximate and should be checked by the client. The images are computer generated and are just an approximate indication of the real appearance of the property; these may change at any time. The information with regards to the property may also change at any time.

For **more information** or
to make an appointment

apropertiespalma@aproperties.es
Tel: 871 16 01 60
www.aproperties.es