

Sindicat, Palma de Mallorca

REF. APM220315

# Apartment for rent with Terrace in Sindicat (Palma de Mallorca)

## Features

- ✓ Views
- ✓ Heating
- ✓ Furnished
- ✓ AACC
- ✓ Terrace
- ✓ Backyard
- ✓ Lift
- ✓ Has parking

Surface

**110 m<sup>2</sup>**

Bedrooms

**4**

Bathrooms

**2**



Price

**1,600 €**

**Centrally located in the Sindicat neighbourhood, gateway to the Old Town of Palma, metres away from the Sant Antoni Gate and the gastronomic Plaça de Raimundo Clar.**

The area is very well communicated due to its proximity to the interchange of Plaza España and Avenida Gabriel Alomar. This modern semi-private property is located in a pedestrian area with a communal garden courtyard. The functional and bright recently refurbished flat has four bedrooms, two doubles and two singles, all of them with built-in wardrobes and exterior. The living room is furnished with large sofas, very bright and with views. The outdoor kitchen is fully equipped with new

appliances and vertical ovens. It also has a breakfast area. The flat has two modern, recently refurbished bathrooms, one with a shower and the other with a bathtub. From the flat there are magnificent views of the neighbourhood and nearby squares from the windows, all of which have double glazed windows. The flat has a communal terrace and parking included in the price which is accessed from the flat by lift. The community fees are included in the price. Water, electricity and rubbish collection charges to be paid by the tenant.

**Contact us,**  
we will be happy to assist you,  
to offer you more details and information.

Sindicat, Palma de Mallorca

REF. APM220315



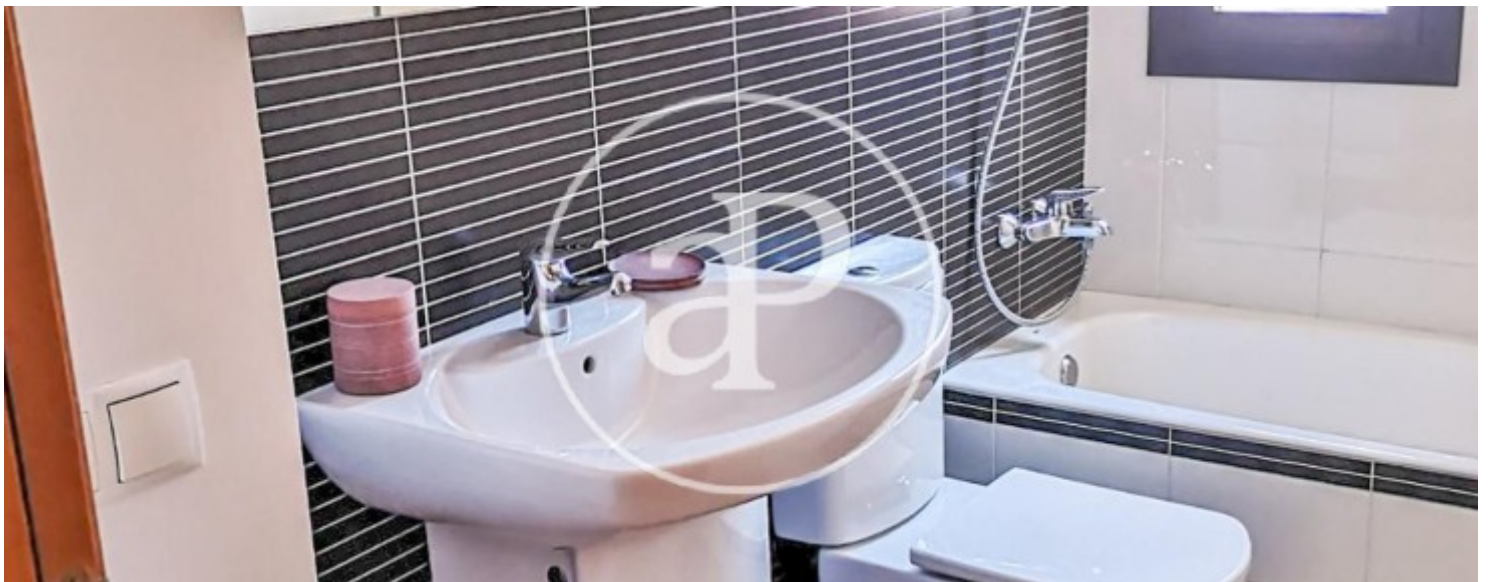
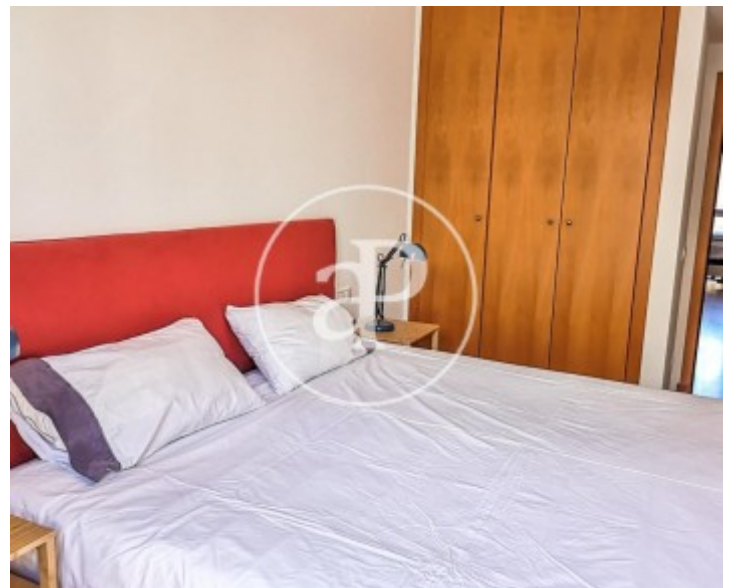
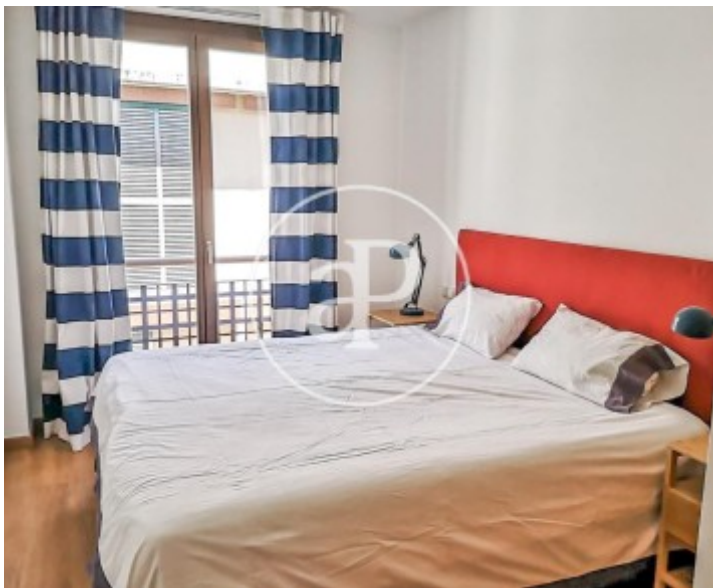
Sindicat, Palma de Mallorca

REF. APM220315



Sindicat, Palma de Mallorca

REF. APM220315



Sindicat, Palma de Mallorca

REF. APM220315



The information about any property is not binding to any offer or contract. Any verbal or written declaration made by aProperties with regards to the value or condition of the property should not be considered accurate or factual. The pictures make reference to some parts of the property at the times that they were taken. The areas, dimensions and distances that are given are approximate and should be checked by the client. The images are computer generated and are just an approximate indication of the real appearance of the property; these may change at any time. The information with regards to the property may also change at any time.

For **more information** or  
to make an appointment

[apropertiespalma@aproperties.es](mailto:apropertiespalma@aproperties.es)  
Tel: 871 16 01 60  
[www.aproperties.es](http://www.aproperties.es)