



(Santa Catalina)

Ref: ONPM2506001



## New Development for Sale in Palma

XO Jonquet Where luxury, architecture, and the Mediterranean merge into one unique experience Located in one of Palma's most sought-after areas, XO Jonquet is more than a new development — it's a lifestyle statement. With panoramic sea views and just steps from the vibrant Santa Catalina district and the seafront promenade, this exclusive enclave redefines what it means to live well. Every detail has been thoughtfully designed for those who value beauty, comfort, and excellence: Residences ranging from 120 to 400 sqm, plus a private villa of 850 sqm Bright interiors with direct access to terraces and outdoor spaces Advanced home automation, noble materials, and timeless design Breathtaking sunsets over the Mediterranean from your living room An urban sanctuary with a resort soul At XO Jonquet, luxury doesn't stop at your doorstep: 550 sqm of wellness spaces: Japanese thermal waters spa, cryotherapy, sauna, hammam, indoor and outdoor pools, yoga and meditation area Private movie theater with state-of-the-art technology and total comfort Fully equipped gym, game court, and golf simulator Social club, wine cellar, private chef services, and [...]

Palma de Mallorca / Santa Catalina

Surface  
144 m<sup>2</sup> - 242 m<sup>2</sup>  
Units  
40  
Completion  
Q4 2028

- ✓ Views
- ✓ Heating
- ✓ AACC
- ✓ Terrace
- ✓ Backyard
- ✓ Pool
- ✓ Gym
- ✓ Lift
- ✓ Security
- ✓ Has parking

Price from 1,660,000 €

**(Santa Catalina)**

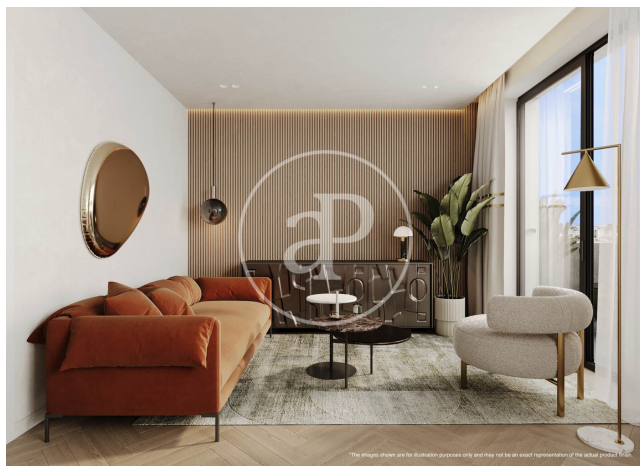
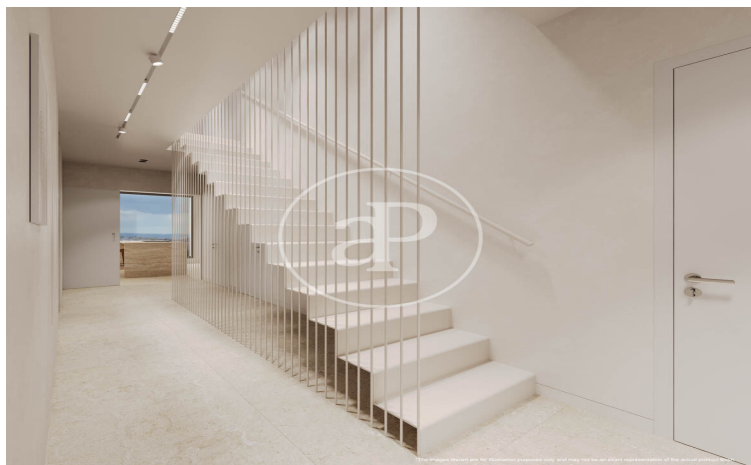
*Ref: ONPM2506001*

Units in this development

Type	Flat
Unit	1° 3P
Surface	160 m <sup>2</sup>
Terrace	17.46 m <sup>2</sup>
Bedrooms	2
Bathrooms	2
Price	€ 2,660,000
State	Available
Type	Flat
Unit	2° 3N
Surface	144 m <sup>2</sup>
Terrace	27.23 m <sup>2</sup>
Bedrooms	3
Bathrooms	3
Price	€ 2,780,000
State	Available
Type	Flat
Unit	3° 4C
Surface	200 m <sup>2</sup>
Terrace	25.86 m <sup>2</sup>
Bedrooms	3
Bathrooms	3
Price	€ 3,660,000
State	Available
Type	Flat
Unit	3° 34F
Surface	182 m <sup>2</sup>
Terrace	27.72 m <sup>2</sup>
Bedrooms	2
Bathrooms	2

(Santa Catalina)

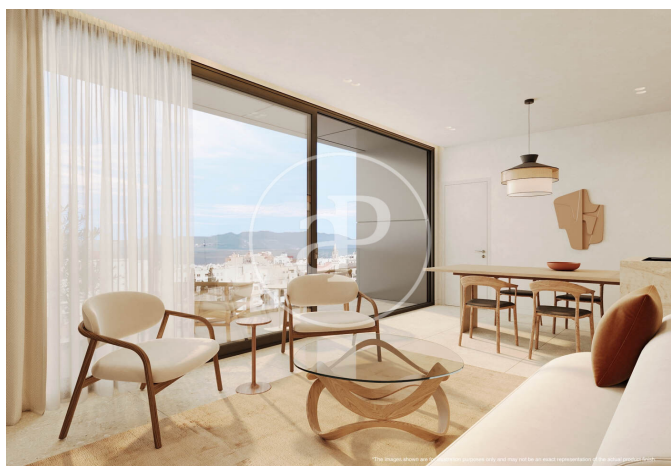
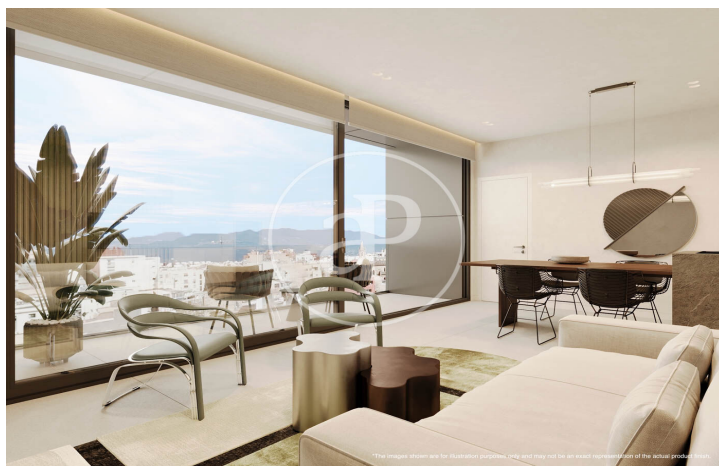
Ref: ONPM2506001





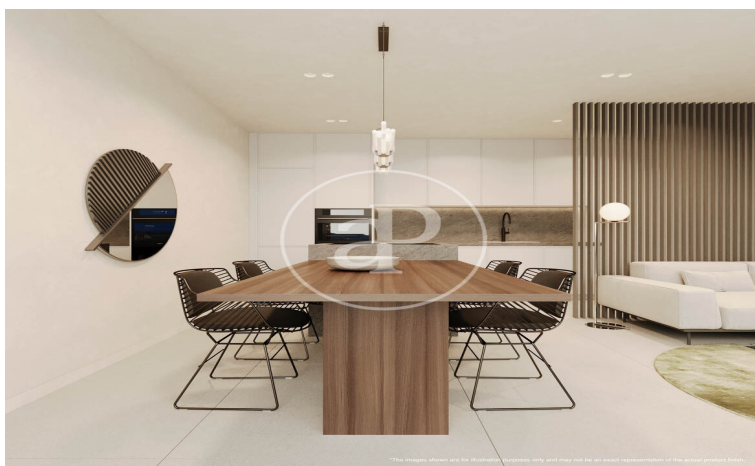
(Santa Catalina)

Ref: ONPM2506001



(Santa Catalina)

Ref: ONPM2506001



The information about any property is not binding to any offer or contract. Any verbal or written declaration made by aProperties with regards to the value or condition of the property should not be considered accurate or factual. The pictures make reference to some parts of the property at the times that they were taken. The areas, dimensions and distances that are given are approximate and should be checked by the client. The images are computer generated and are just an approximate indication of the real appearance of the property; these may change at any time. The information with regards to the property may also change at any time.

Contact us today for more information or to arrange a viewing

Tel: 871 16 01 60 [apropertiespalma@aproperties.es](mailto:apropertiespalma@aproperties.es) <https://www.aproperties.es>