

Santa Catalina, Palma de Mallorca

REF. APM2304045



## House for rent with terrace and garage in Santa Catalina

### Features

- ✓ Furnished
- ✓ Terrace
- ✓ Has parking

Price

**3,300 €**

Surface

**145 m<sup>2</sup>**

Bedrooms

**3**

Bathrooms

**2**



### UNIQUE HOUSE WITH PRIVATE GARAGE AND TERRACE IN SANTA CATALINA.

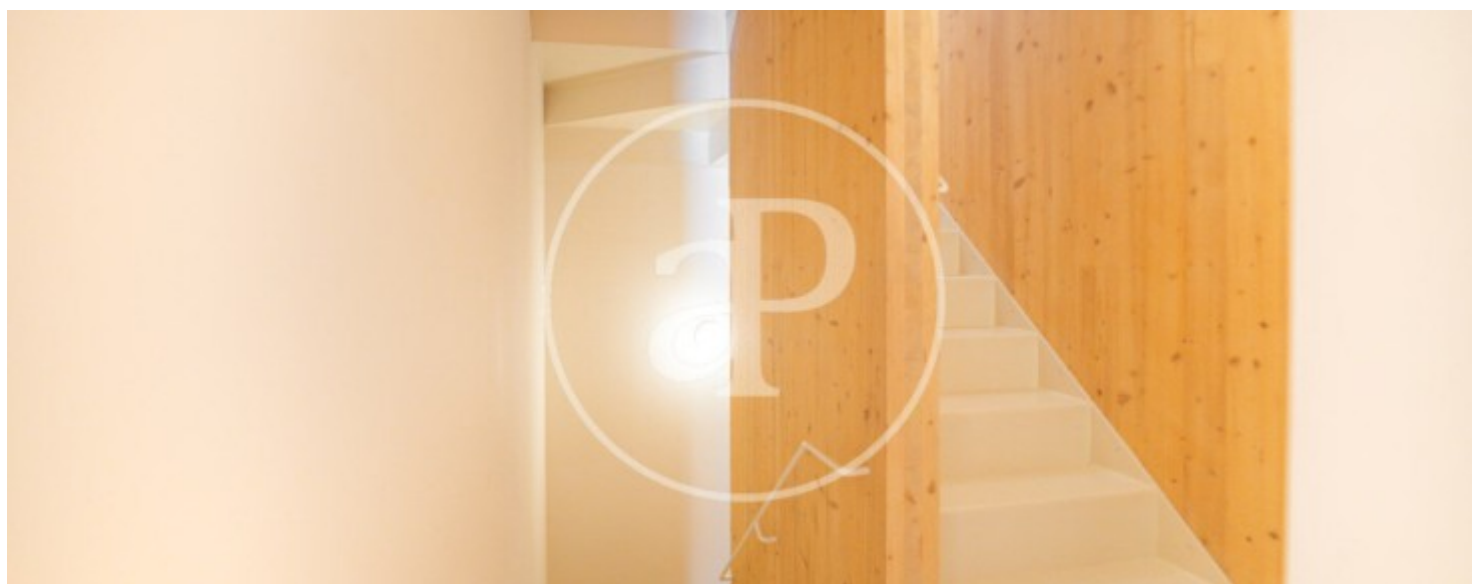
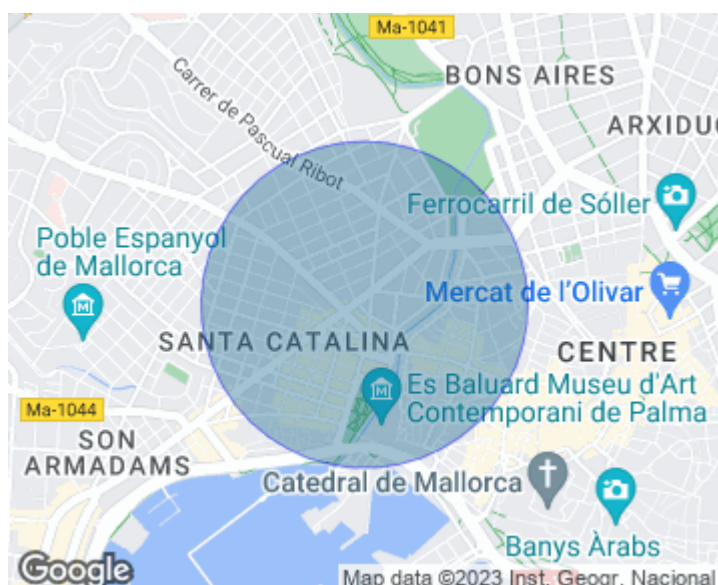
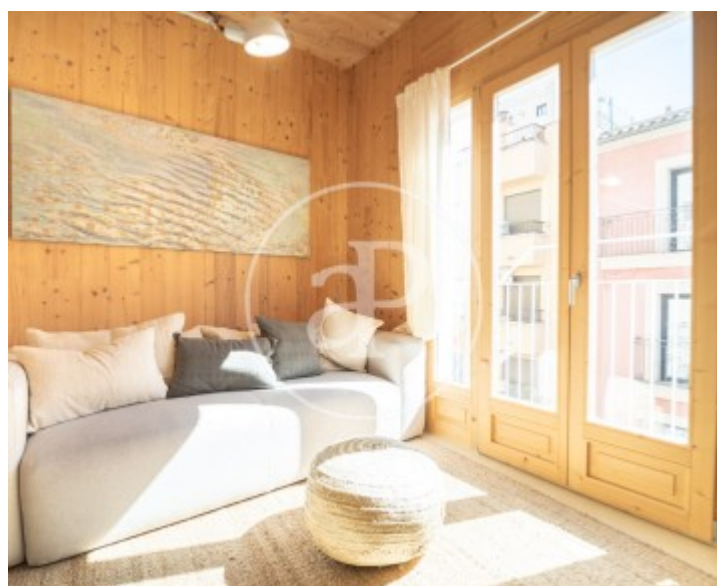
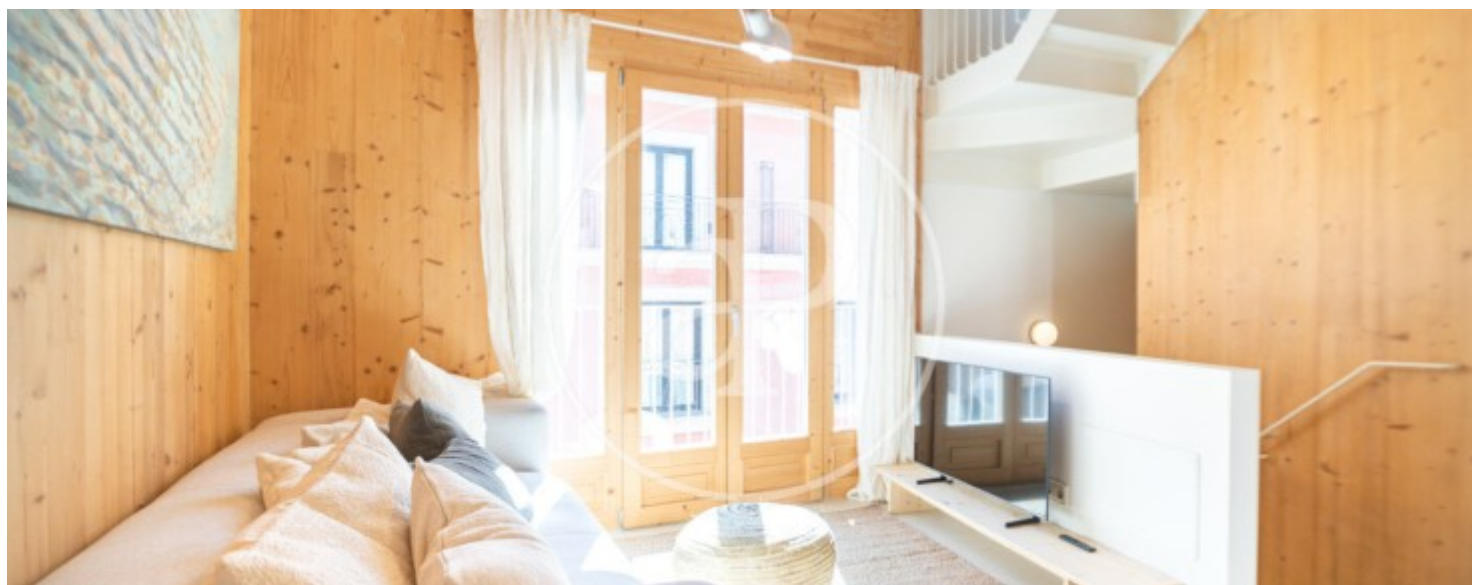
In one of the most sought after neighbourhoods of Palma, with all kinds of services and only a few minutes walking distance to the old town, the yacht club of Palma and the nightlife attractions of the city, we find this minimalist style house furnished in a Nordic style. Throughout the house the light colours of wood and beige painted metal predominate. The house is very bright thanks to its double exposure and large windows. On the ground floor there is a private garage with a socket for electric recharging. The next three floors, of about 30m<sup>2</sup> each, are distributed over a living room and a fully

equipped kitchen with all electrical appliances, three bedrooms and, on the roof terrace, the utility room and the equipped terrace. From the garage to the terrace, there is a lift that connects each floor. Can you imagine living here, we are waiting for your call!

**Contact us,**  
we will be happy to assist you,  
to offer you more details and information.

Santa Catalina, Palma de Mallorca

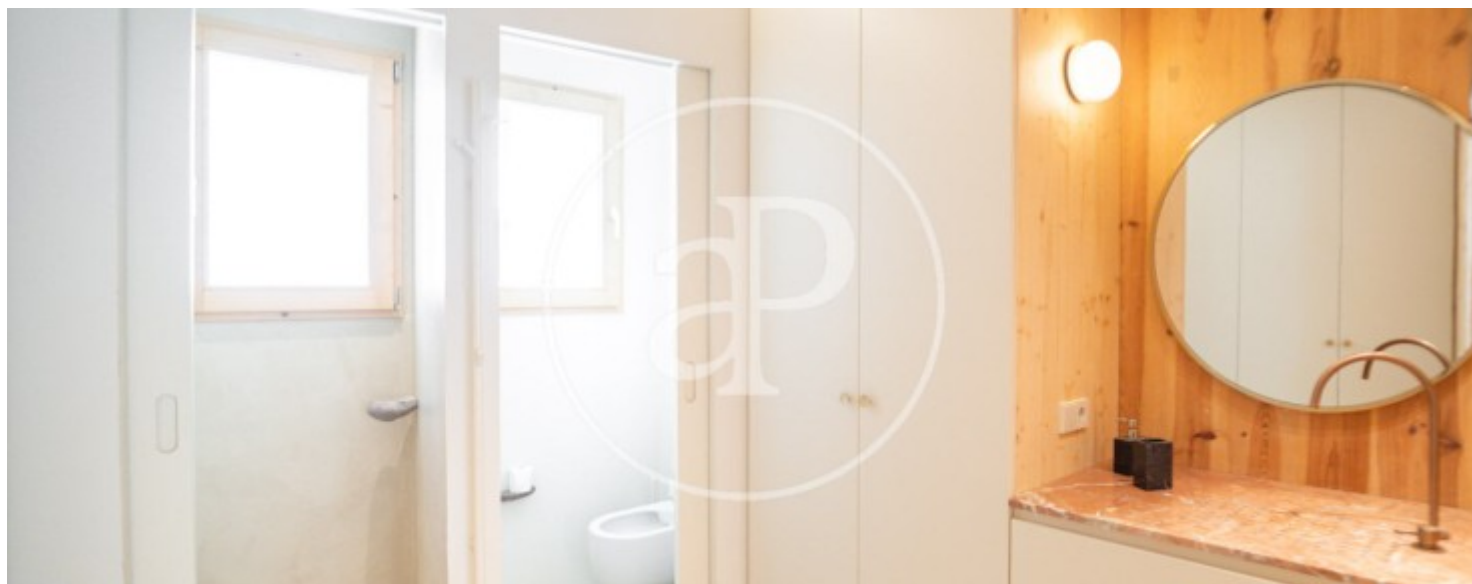
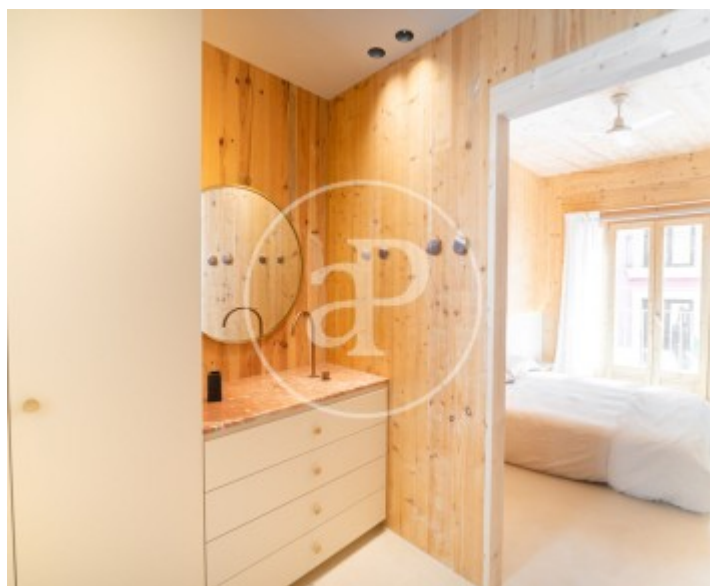
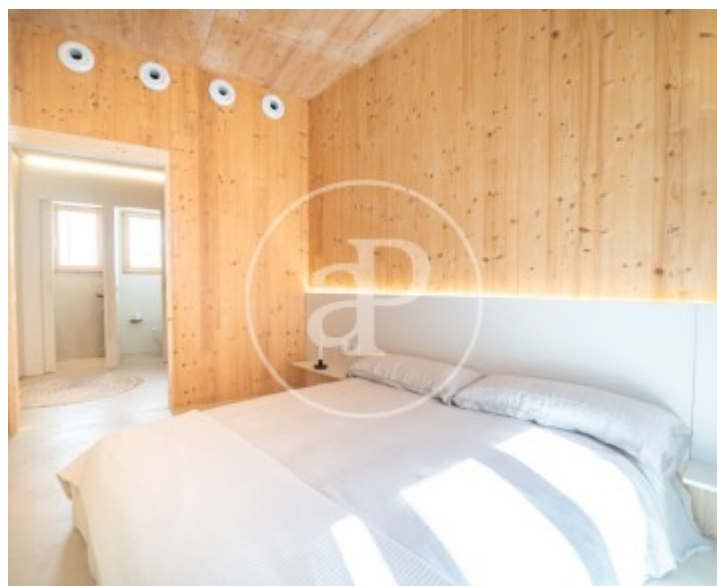
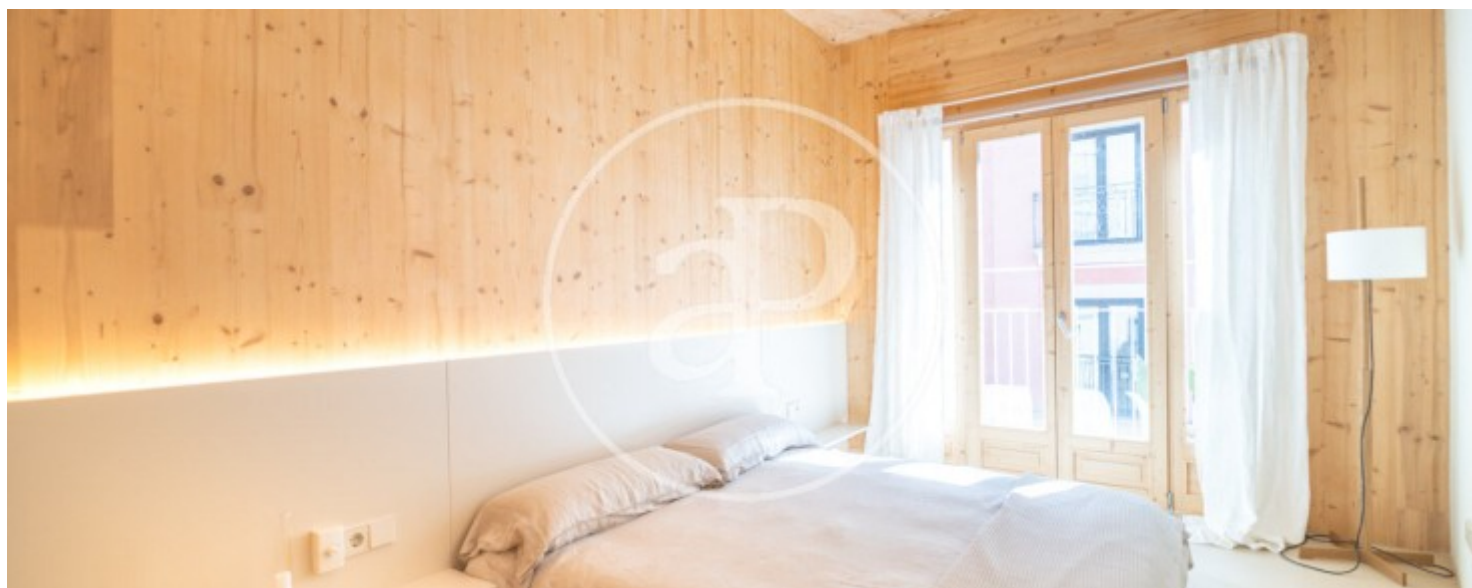
REF. APM2304045





Santa Catalina, Palma de Mallorca

REF. APM2304045



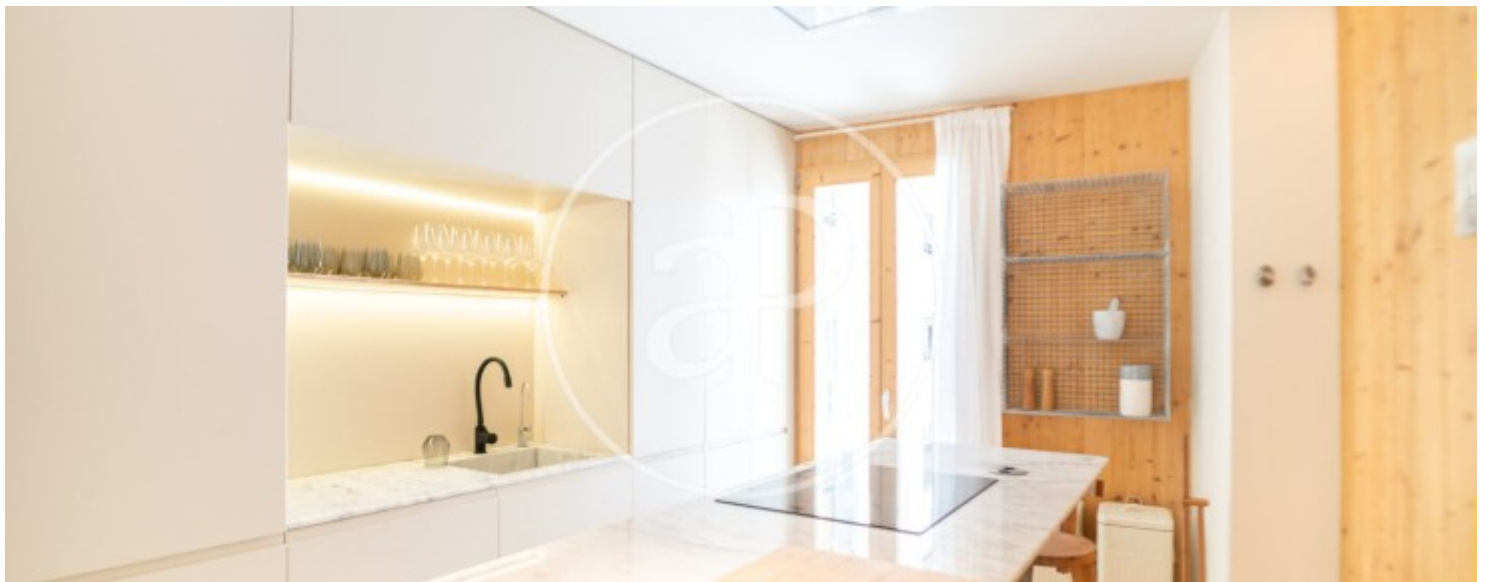


APROPERTIES  
REAL ESTATE

Calle Unió 9  
07001 Palma  
T. 871 16 01 60  
[www.aproproperties.es](http://www.aproproperties.es)

Santa Catalina, Palma de Mallorca

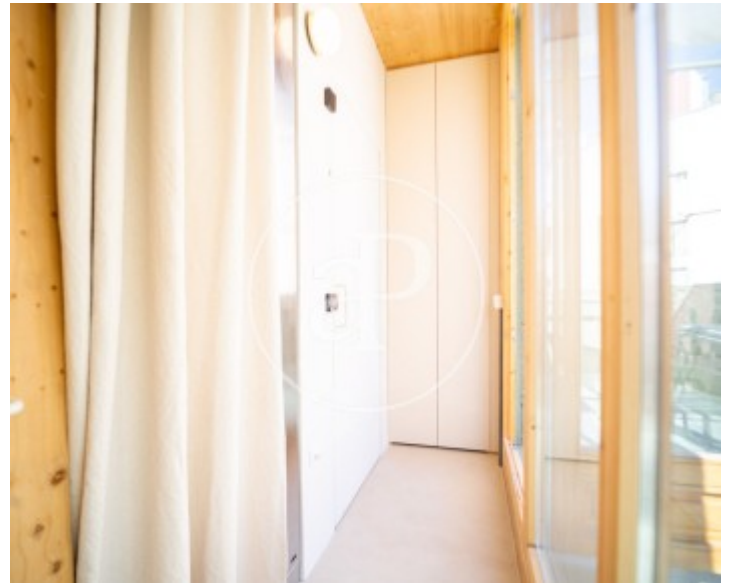
REF. APM2304045





Santa Catalina, Palma de Mallorca

REF. APM2304045



The information about any property is not binding to any offer or contract. Any verbal or written declaration made by aProperties with regards to the value or condition of the property should not be considered accurate or factual. The pictures make reference to some parts of the property at the times that they were taken. The areas, dimensions and distances that are given are approximate and should be checked by the client. The images are computer generated and are just an approximate indication of the real appearance of the property; these may change at any time. The information with regards to the property may also change at any time.



For **more information** or  
to make an appointment

[apropertiespalma@aproperties.es](mailto:apropertiespalma@aproperties.es)  
Tel: 871 16 01 60  
[www.aproperties.es](http://www.aproperties.es)