

Santa Catalina, Palma de Mallorca

REF. VPM2304020

Renovated apartment for sale with two terraces in Santa Catalina

Features

- ✓ Heating
- ✓ AACC
- ✓ Lift
- ✓ Furnished
- ✓ Terrace

Surface

80 m²

Bedrooms

2

Bathrooms

2

Price

1,275,000 €



Situated on a quiet street in the prestigious neighborhood of Santa Catalina, this renovated penthouse with two terraces is a true gem.

The property features 80 m² of interior space and an additional 70 m² of terraces on two levels, offering spectacular views of Santa Catalina and the Bay of Palma. Located in one of the most exclusive and beautiful areas of Palma, just a few steps from the Paseo Marítimo, it is surrounded by shops, the famous Santa Catalina market, and has excellent public transport connections. It is the perfect place to enjoy the rich gastronomic and leisure offerings of the area. The interior of this charming property is

distributed into a spacious living-dining room, a designer open-plan kitchen, and two fully furnished double bedrooms. Additionally, it boasts two elegant en-suite bathrooms finished in veined white marble. The minimalist renovation of the kitchen and bathrooms creates a perfect balance between contemporary design and traditional charm, preserving original details such as exposed beams. This property combines comfort and style in an unbeatable location. Can you imagine living in a place like this?

Contact us,
we will be happy to assist you,
to offer you more details and information.

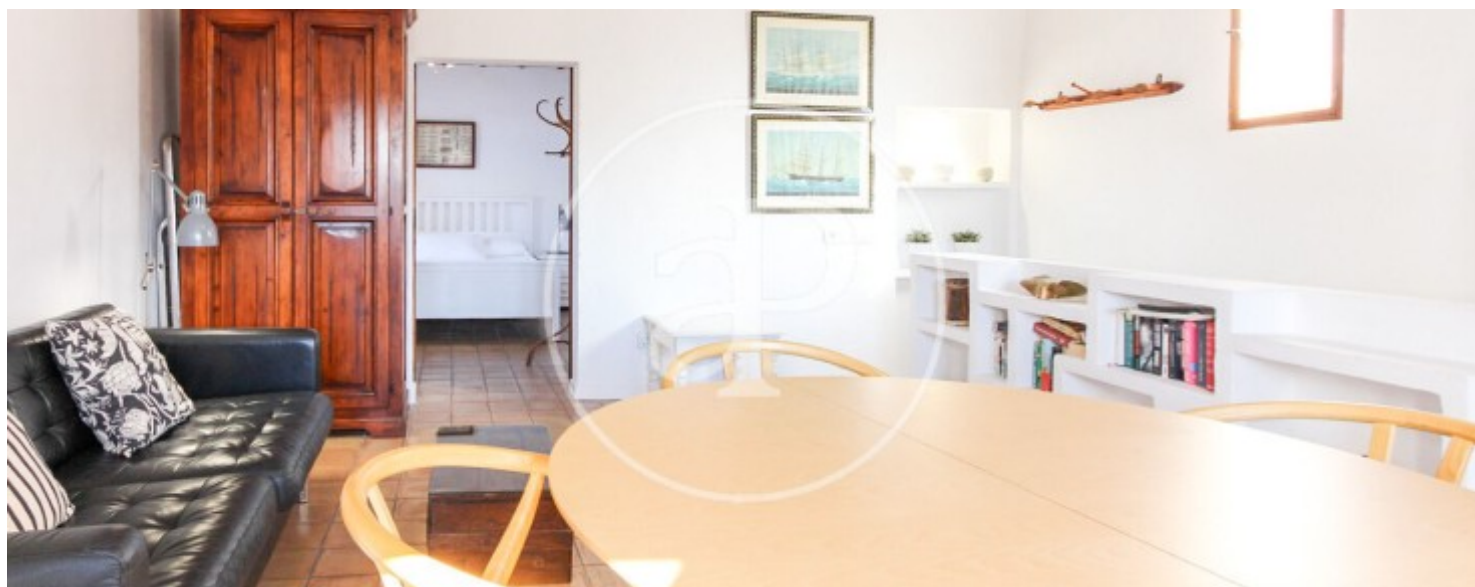
Santa Catalina, Palma de Mallorca

REF. VPM2304020



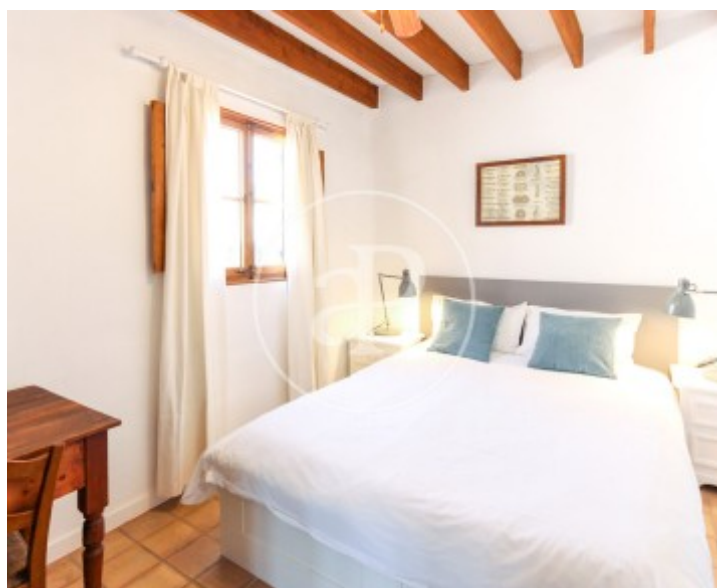
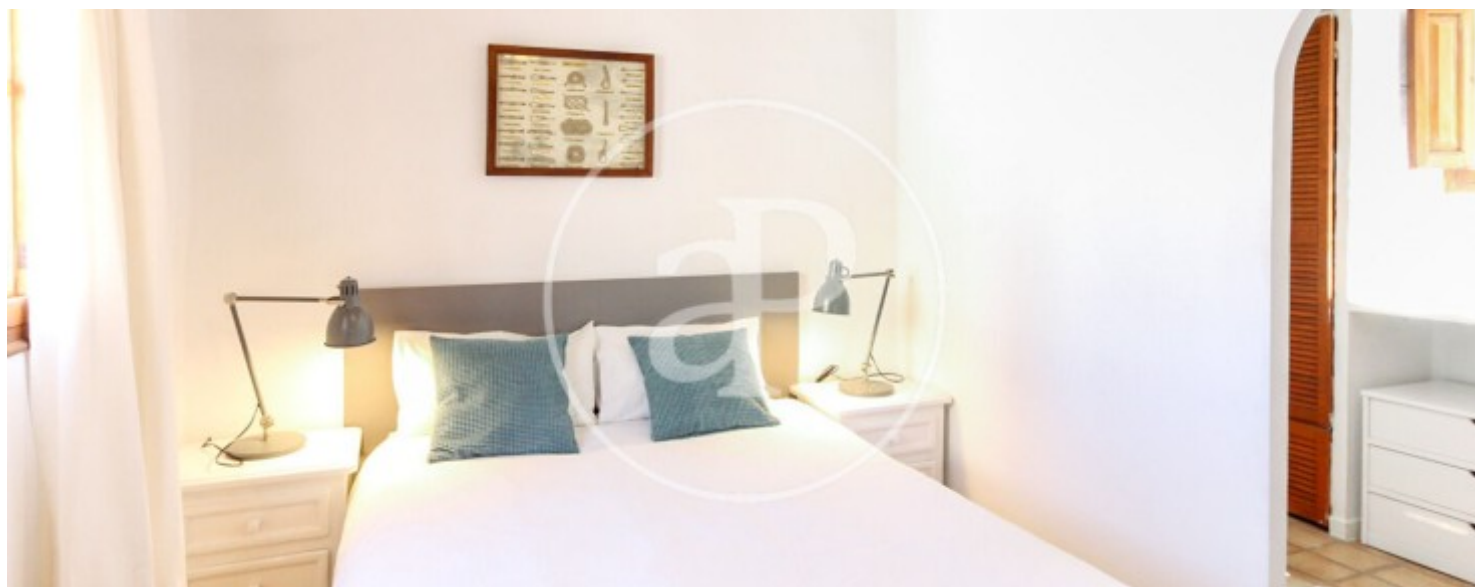
Santa Catalina, Palma de Mallorca

REF. VPM2304020



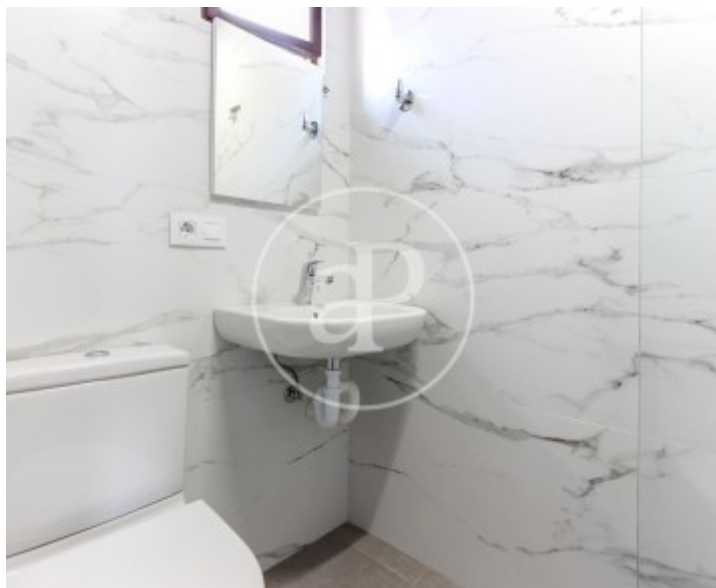
Santa Catalina, Palma de Mallorca

REF. VPM2304020



Santa Catalina, Palma de Mallorca

REF. VPM2304020



The information about any property is not binding to any offer or contract. Any verbal or written declaration made by aProperties with regards to the value or condition of the property should not be considered accurate or factual. The pictures make reference to some parts of the property at the times that they were taken. The areas, dimensions and distances that are given are approximate and should be checked by the client. The images are computer generated and are just an approximate indication of the real appearance of the property; these may change at any time. The information with regards to the property may also change at any time.

For **more information** or
to make an appointment

apropertiespalma@aproperties.es
Tel: 871 16 01 60
www.aproperties.es