



Sant Jordi, Palma de Mallorca

REF. VPM2307011

Rustic house for sale with with windmill in Palma

Features

- ✓ Views
- ✓ Heating
- ✓ Boxroom
- ✓ AACC
- ✓ Terrace
- ✓ Backyard
- ✓ Security
- ✓ Has parking

Surface

575 m²

Bedrooms

8

Bathrooms

4

Price

2,200,000 €



AProperties presents this unique finca in the sought after area of S'Aranjassa.

Only 15 minutes drive from the center of Palma and 10 minutes drive from the Arenal beach, this property offers an ideal location. All amenities are within a 5 minute drive, and it enjoys a unique parallel position to the airport, free from aircraft noise. This property has great potential for both residential, commercial and agricultural purposes. The exterior of the property features a meticulously manicured garden, an original and well-preserved windmill, and 50,000 sqm of rustic fields. The house boasts 575 sqm of living space, with a magnificent main entrance hall leading to 8

bedrooms, 3 separate kitchens, 4 bathrooms and several living areas throughout the property. Although the property has served as the main office for the owner family, it has recently obtained the Cédula de Habitabilidad, making it suitable for use as a spacious private residence or as office space for a company looking for a spacious and strategically located location on the island. The property underwent a complete renovation in the 2000s, during which 1 cubic meter of concrete was added under its foundations to prevent the very natural moisture infiltration in Mallorca, adding...

Contact us,
we will be happy to assist you,
to offer you more details and information.

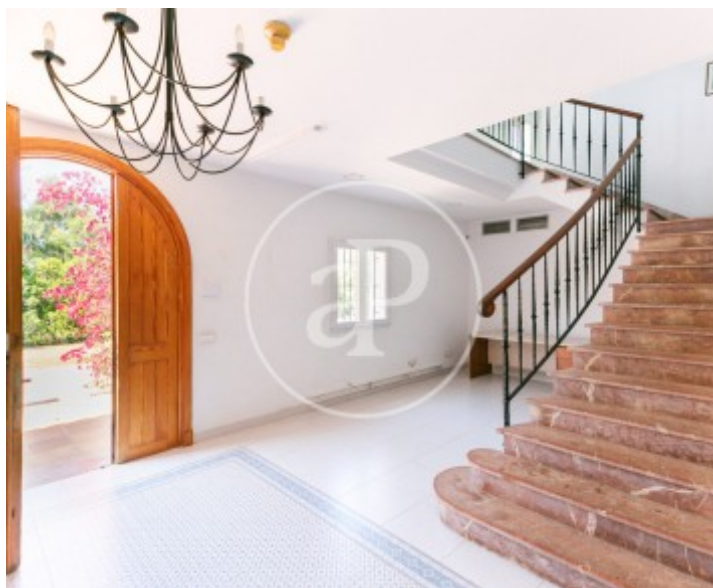
Sant Jordi, Palma de Mallorca

REF. VPM2307011



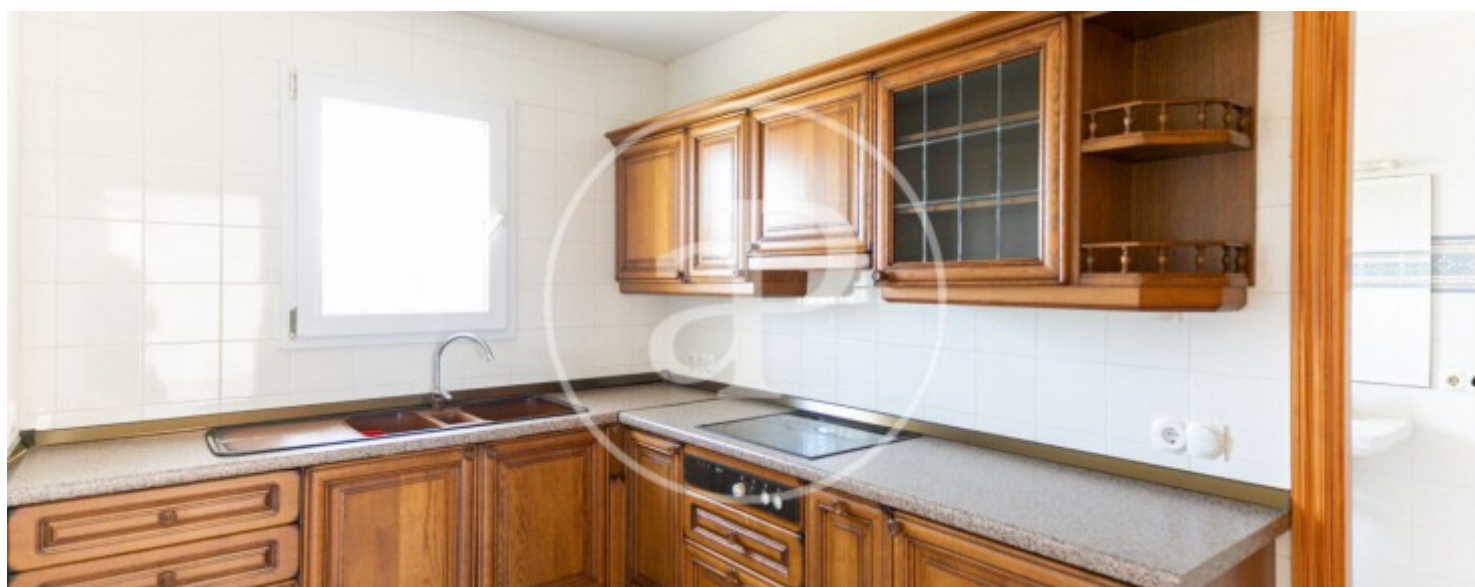
Sant Jordi, Palma de Mallorca

REF. VPM2307011



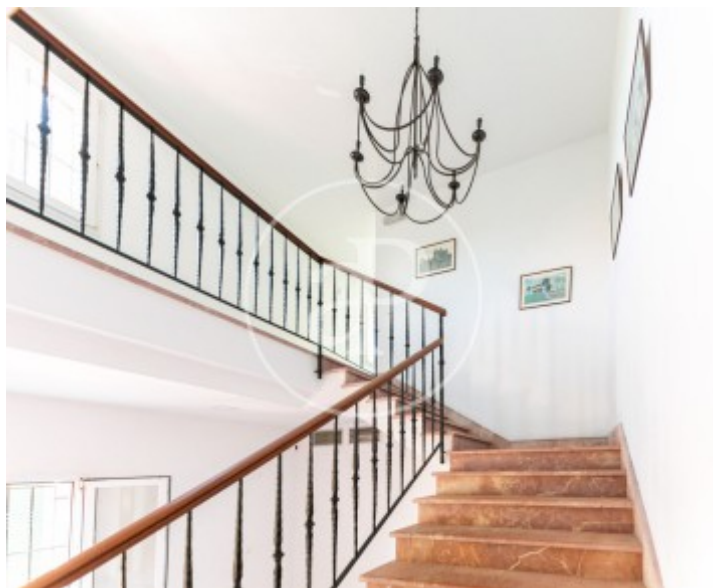
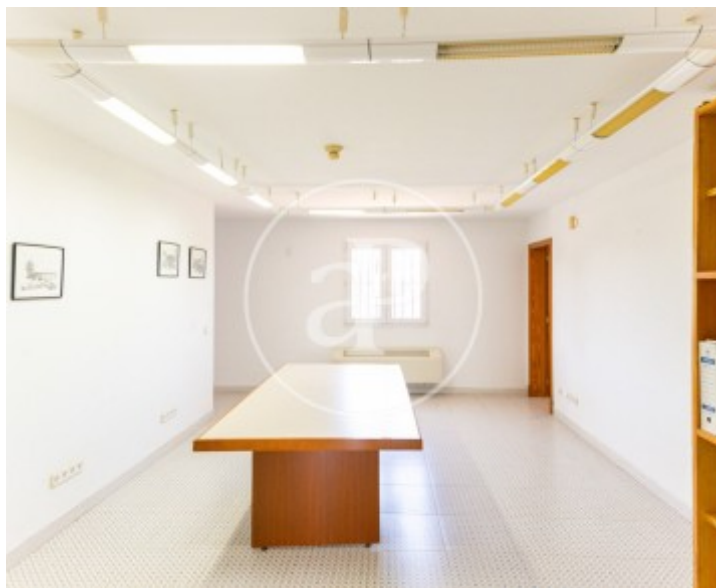
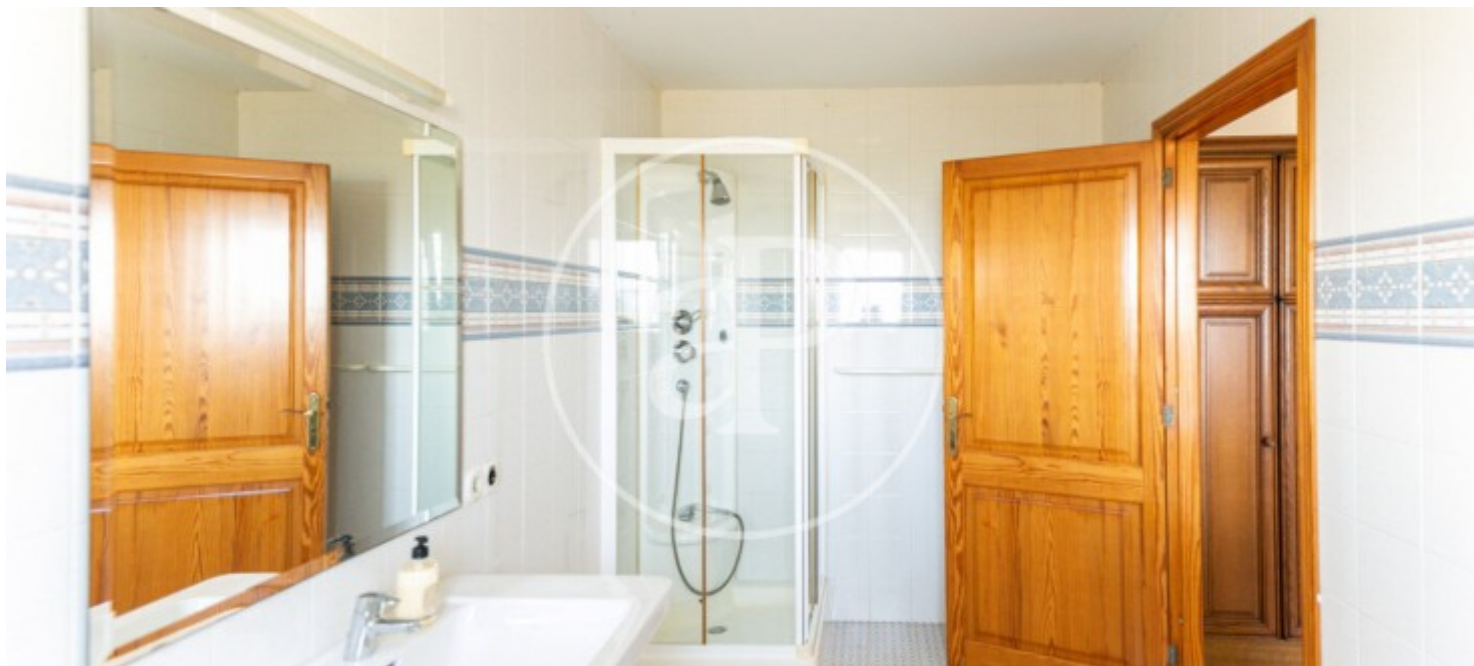
Sant Jordi, Palma de Mallorca

REF. VPM2307011



Sant Jordi, Palma de Mallorca

REF. VPM2307011



The information about any property is not binding to any offer or contract. Any verbal or written declaration made by aProperties with regards to the value or condition of the property should not be considered accurate or factual. The pictures make reference to some parts of the property at the times that they were taken. The areas, dimensions and distances that are given are approximate and should be checked by the client. The images are computer generated and are just an approximate indication of the real appearance of the property; these may change at any time. The information with regards to the property may also change at any time.

For **more information** or
to make an appointment

apropertiespalma@aproperties.es
Tel: 871 16 01 60
www.aproperties.es