



Sant Jaume, Palma de Mallorca

REF. VPM2401001

# Flat for sale in Palma

## Features

- ✓ Views
- ✓ Heating
- ✓ Furnished
- ✓ AACC
- ✓ Lift
- ✓ Concierge
- ✓ Has parking

Price

**2,900,000 €**

Surface

**243 m<sup>2</sup>**

Bedrooms

**3**

Bathrooms

**4**



**Located in the privileged area of Palma, on the iconic Calle Sant Jaume, this exceptional duplex penthouse of 243 m<sup>2</sup> stands in a stately building with its own lift and parking.**

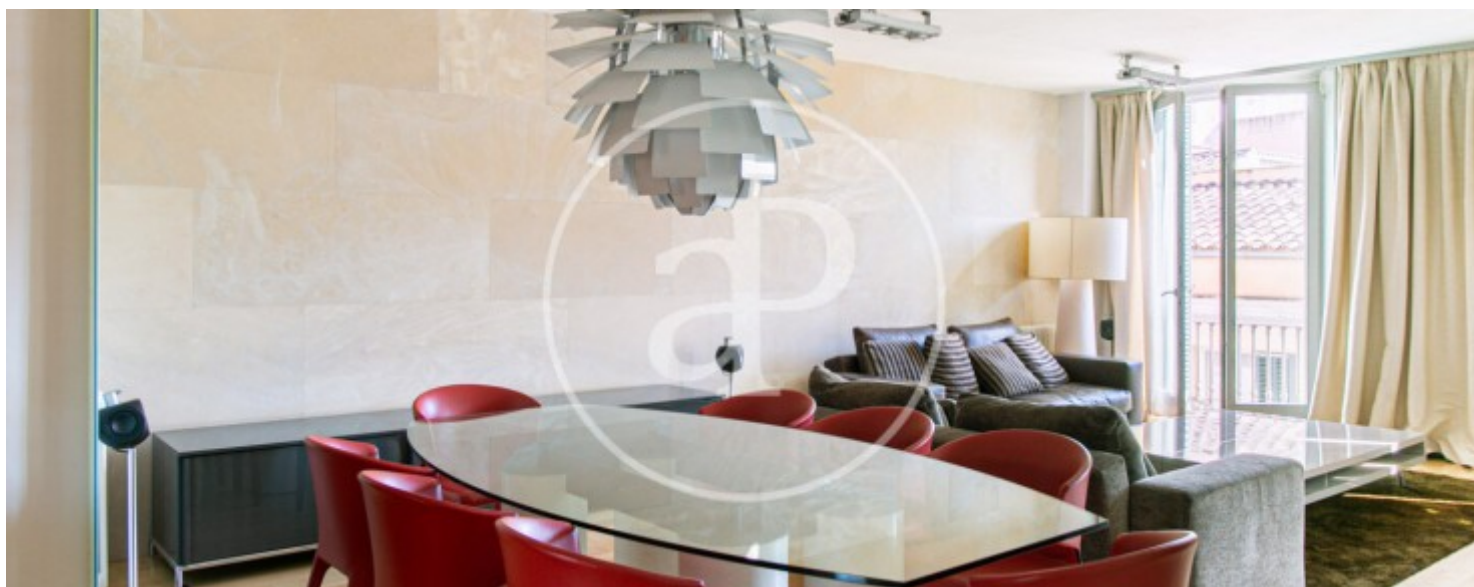
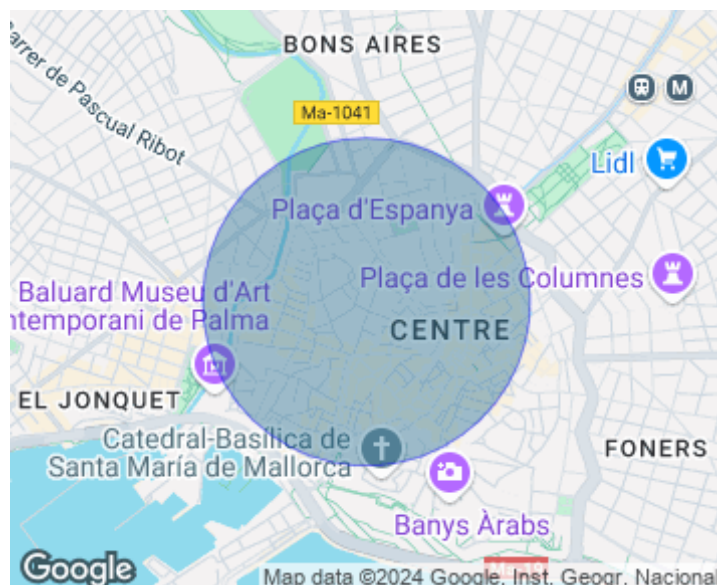
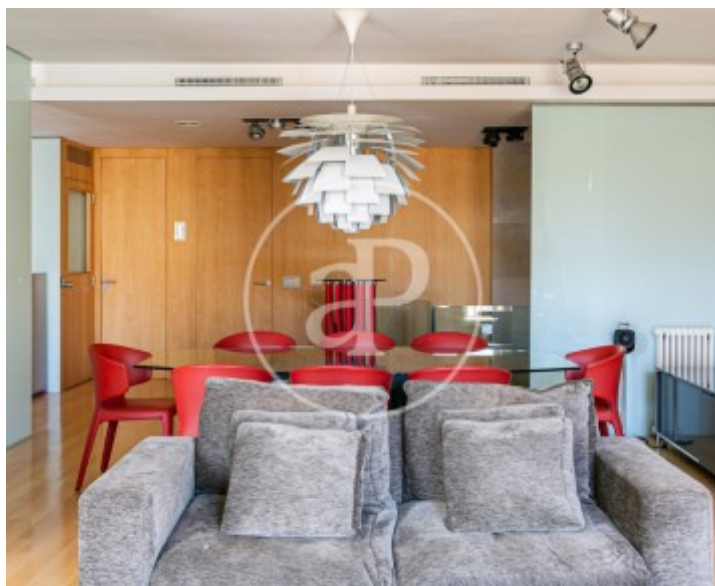
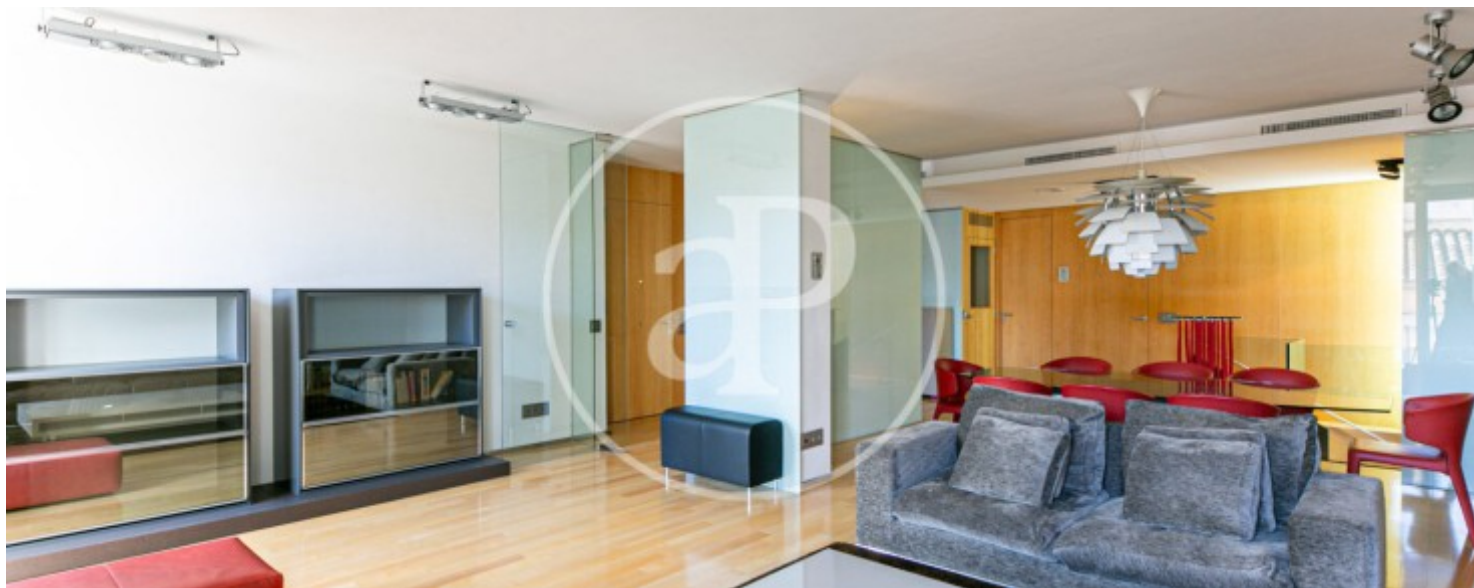
Brightness, one of its distinguishing features, blends harmoniously with the distribution of its three spacious bedrooms, all of them en suite. On the upper floor, the day area unfolds elegantly. A welcoming entrance hall leads to a spacious living/dining room, while a large eat-in kitchen equipped with top-of-the-range appliances completes this living space. In addition, a guest toilet and two en-suite bedrooms guarantee comfort and functionality. Stairs lead down to the lower floor,

where the spacious master bedroom, with its generous dressing room and en-suite bathroom, creates a luxurious retreat. Emphasising accessibility, a private lift facilitates transit between the levels, while parquet floors add a touch of elegance. This exclusive design is complemented by quality elements, offering a unique living experience. In terms of communal spaces, the building has two lifts adding further value to this exceptional property. Framed by the vibrant atmosphere of Palma, surrounded by the best restaurants and luxury shops, very well communicated with all types of public...

**Contact us,**  
we will be happy to assist you,  
to offer you more details and information.

Sant Jaume, Palma de Mallorca

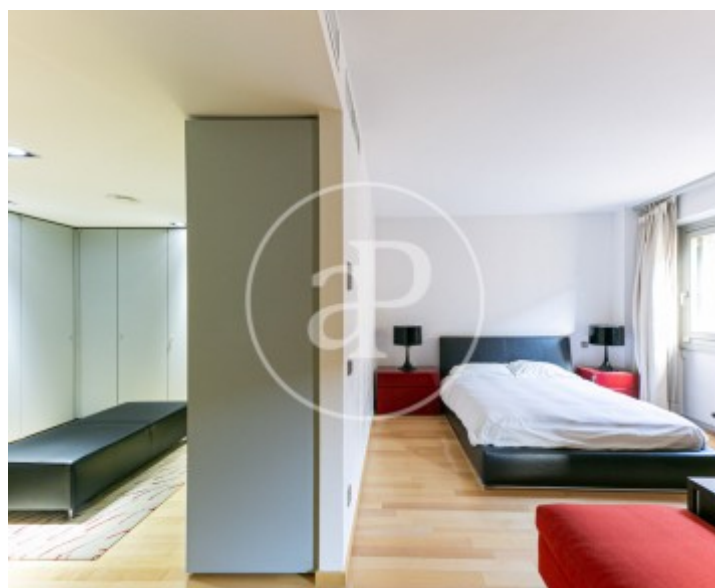
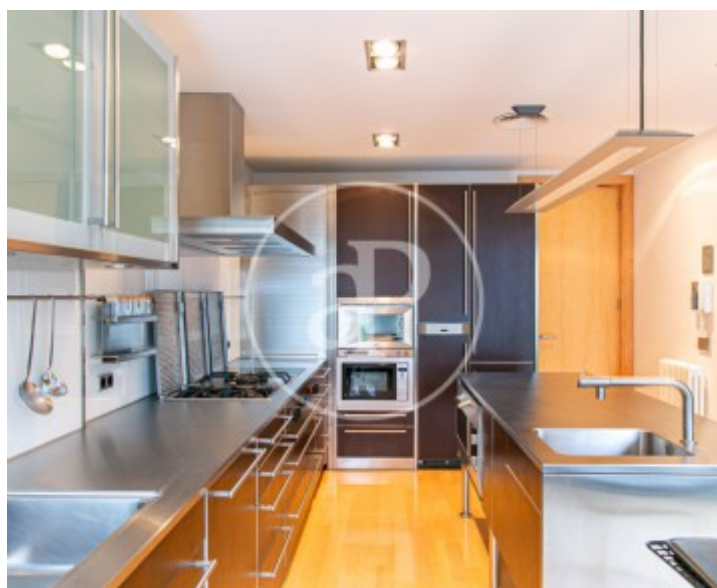
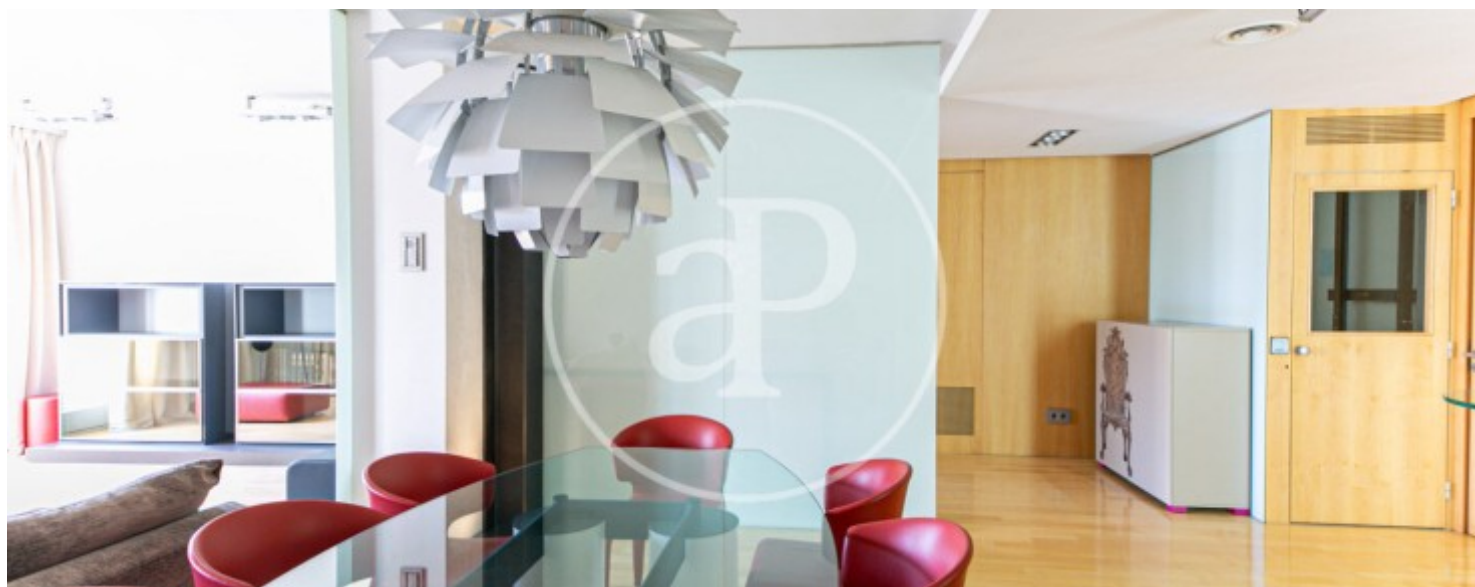
REF. VPM2401001





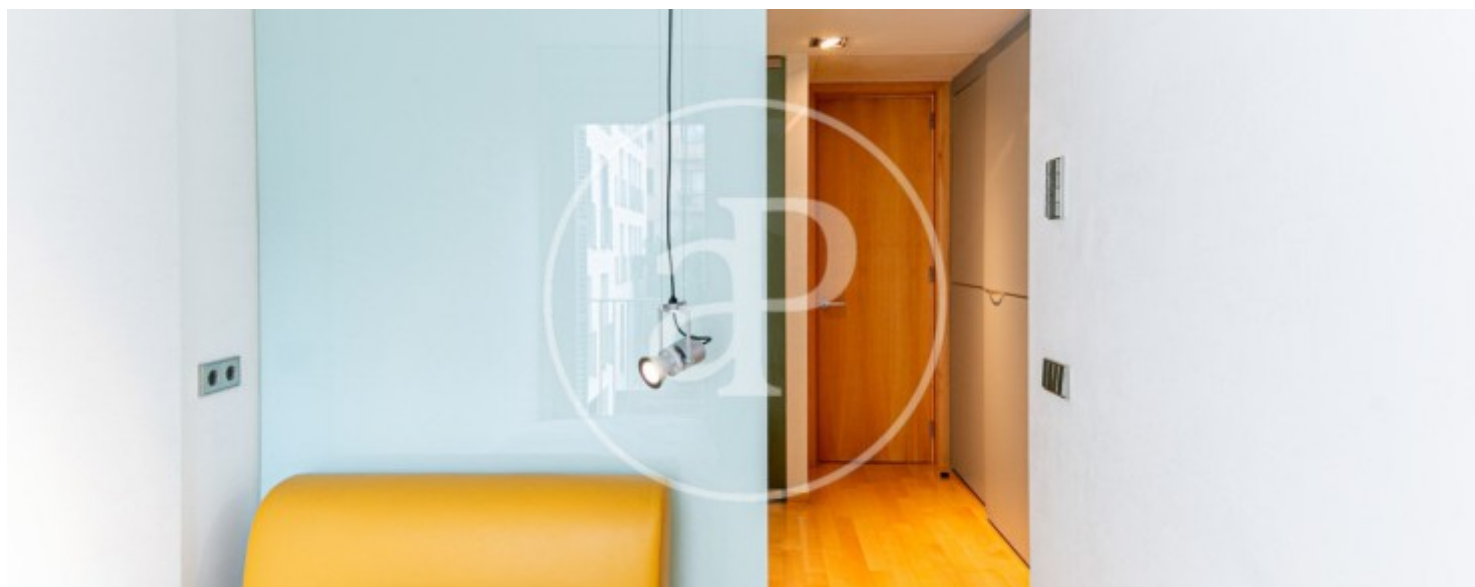
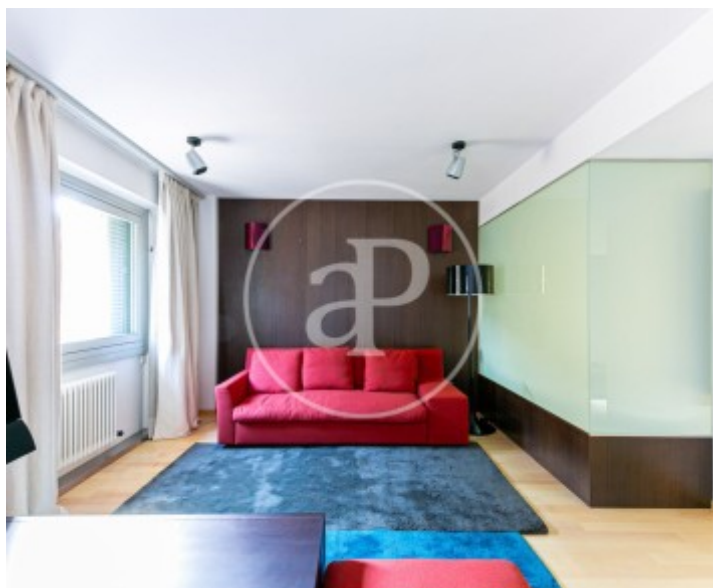
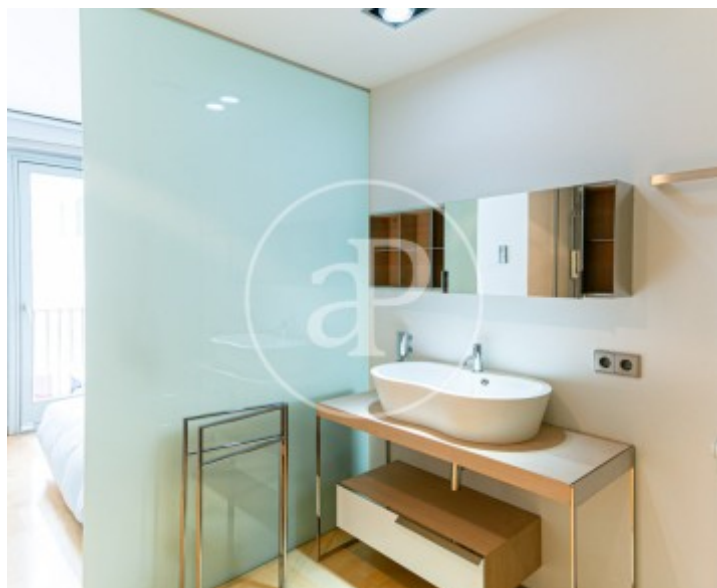
Sant Jaume, Palma de Mallorca

REF. VPM2401001



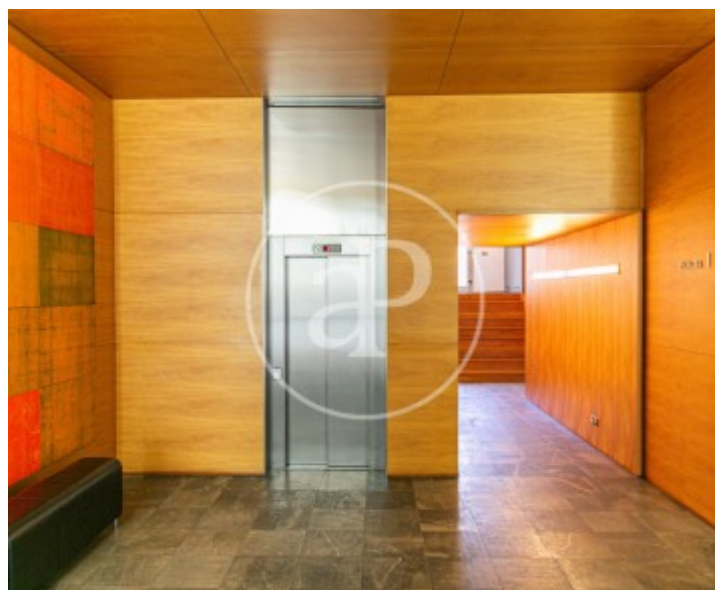
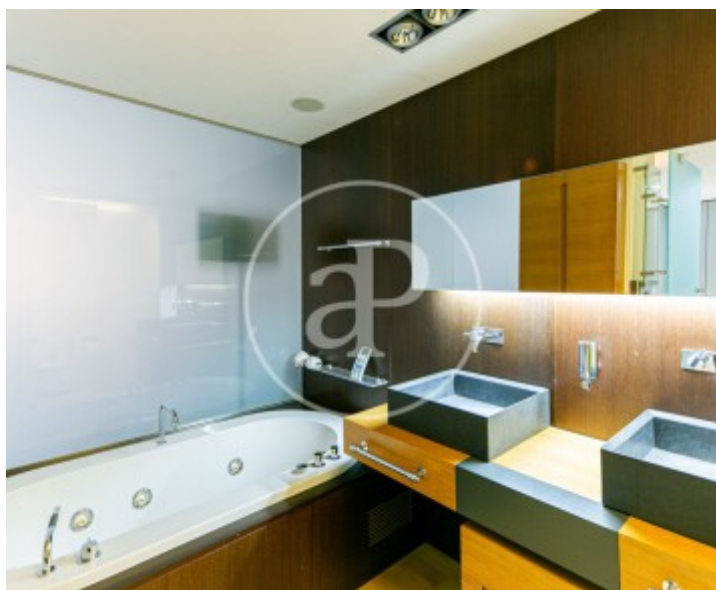
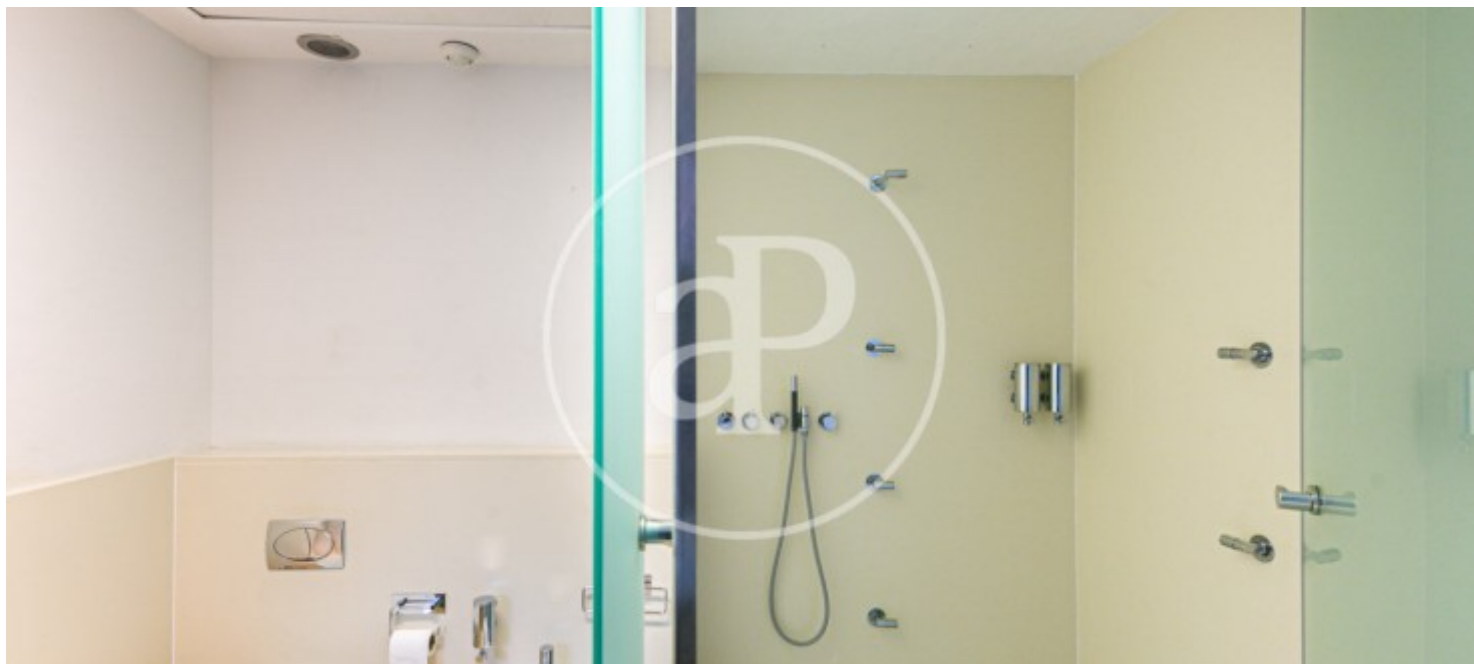
Sant Jaume, Palma de Mallorca

REF. VPM2401001



Sant Jaume, Palma de Mallorca

REF. VPM2401001



The information about any property is not binding to any offer or contract. Any verbal or written declaration made by aProperties with regards to the value or condition of the property should not be considered accurate or factual. The pictures make reference to some parts of the property at the times that they were taken. The areas, dimensions and distances that are given are approximate and should be checked by the client. The images are computer generated and are just an approximate indication of the real appearance of the property; these may change at any time. The information with regards to the property may also change at any time.

For **more information** or  
to make an appointment

[apropertiespalma@aproperties.es](mailto:apropertiespalma@aproperties.es)  
Tel: 871 16 01 60  
[www.aproperties.es](http://www.aproperties.es)