

Sant Jaume, Palma de Mallorca

REF. VPM2504001

Apartment for sale in Sant Jaume

Features

- ✓ Views
- ✓ Heating
- ✓ Boxroom
- ✓ AACC
- ✓ Terrace
- ✓ Lift
- ✓ Concierge
- ✓ Has parking

Surface

148 m²

Bedrooms

3

Bathrooms

2

Price

1,450,000 €



Located in the prestigious area of Palma, on the iconic Calle Sant Jaume, this exceptional and bright corner apartment of 145 sqm stands in a stately building with an elevator.

The luminosity, one of its distinctive features, blends harmoniously with the layout of its three bedrooms, one of which is en suite, while the other two bedrooms share another bathroom. The day area unfolds with elegance. A welcoming entrance leads to a spacious living-dining room with access to a corner terrace offering unobstructed views through large windows. Meanwhile, the independent kitchen with a breakfast area, equipped with high-end appliances, completes this living space, ensuring

comfort and functionality. The night area consists of the master bedroom with an integrated bathroom and built-in wardrobes, plus two double exterior bedrooms with wardrobes. Parquet floors add a touch of elegance and comfort, while gas heating via radiators and ducted air conditioning throughout the apartment guarantee a pleasant atmosphere. Double-glazed windows enhance insulation. As for the common areas, the building offers two elevators, adding extra value to this exceptional property, which also includes two parking spaces in the same building and a storage room in the price. Framed by...

Contact us,
we will be happy to assist you,
to offer you more details and information.

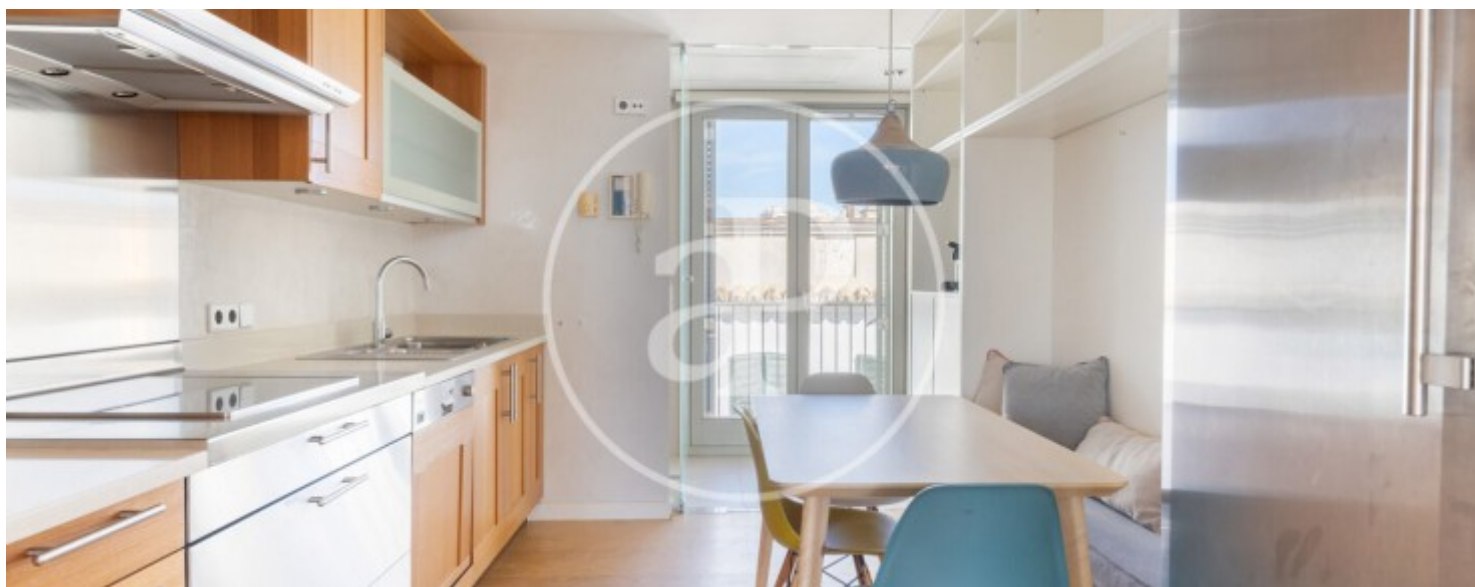
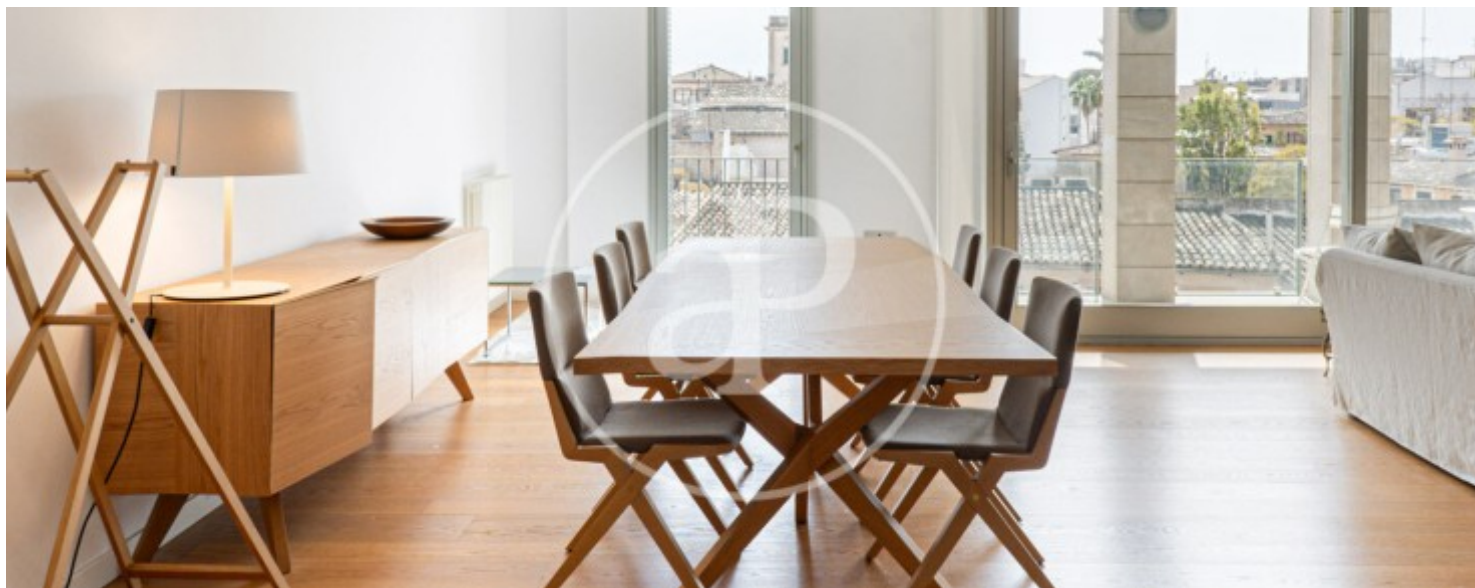
Sant Jaume, Palma de Mallorca

REF. VPM2504001



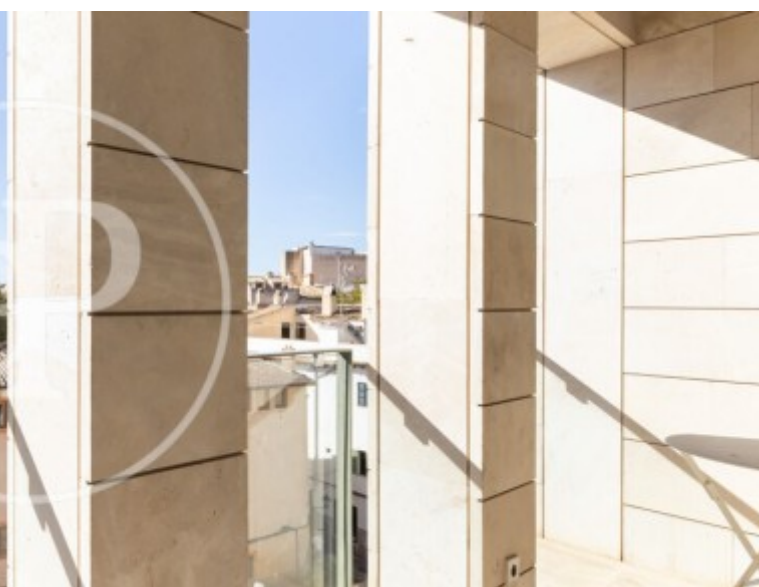
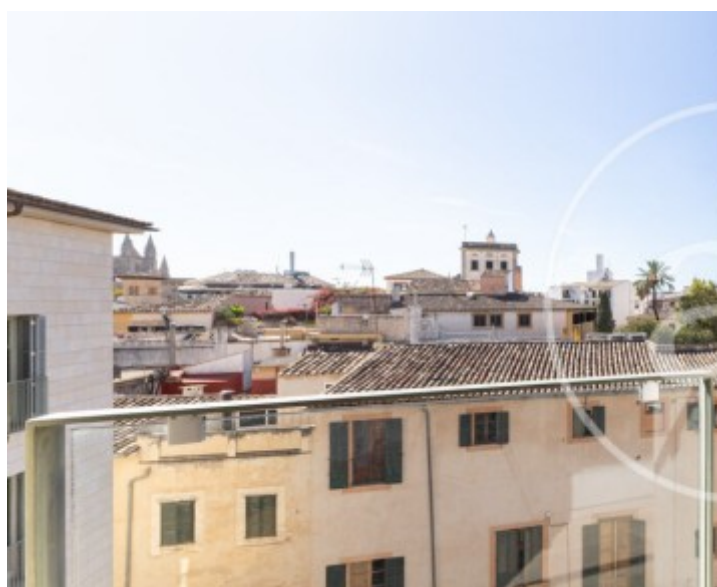
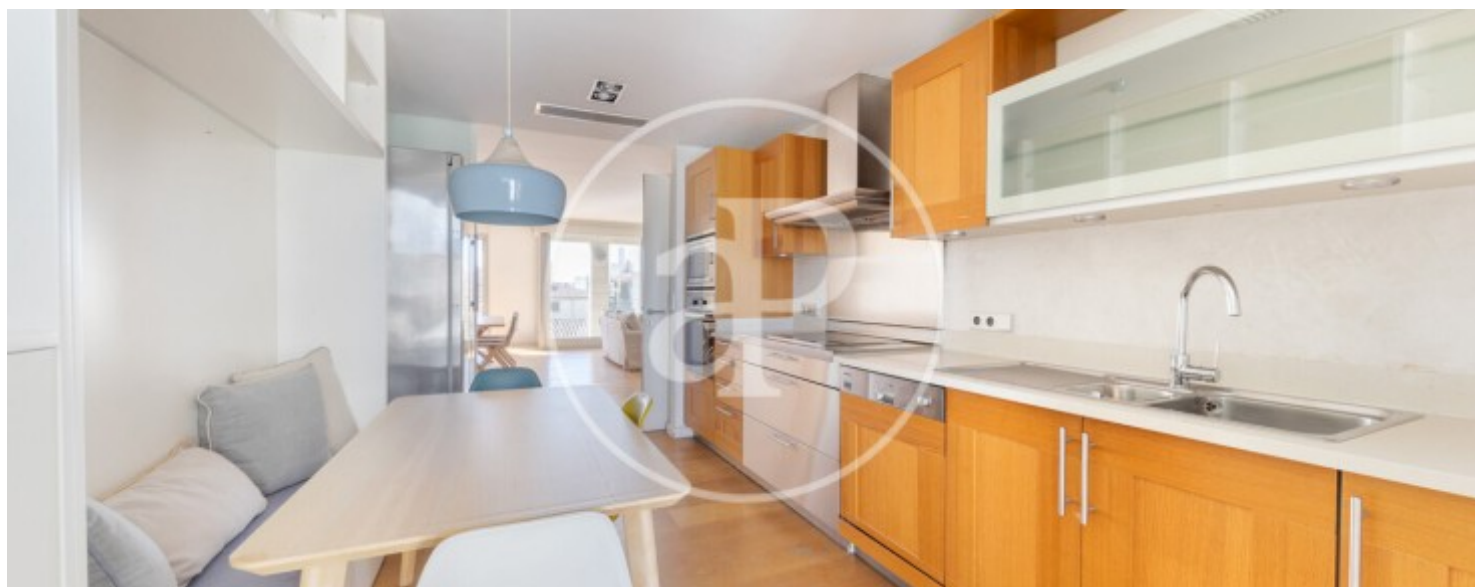
Sant Jaume, Palma de Mallorca

REF. VPM2504001



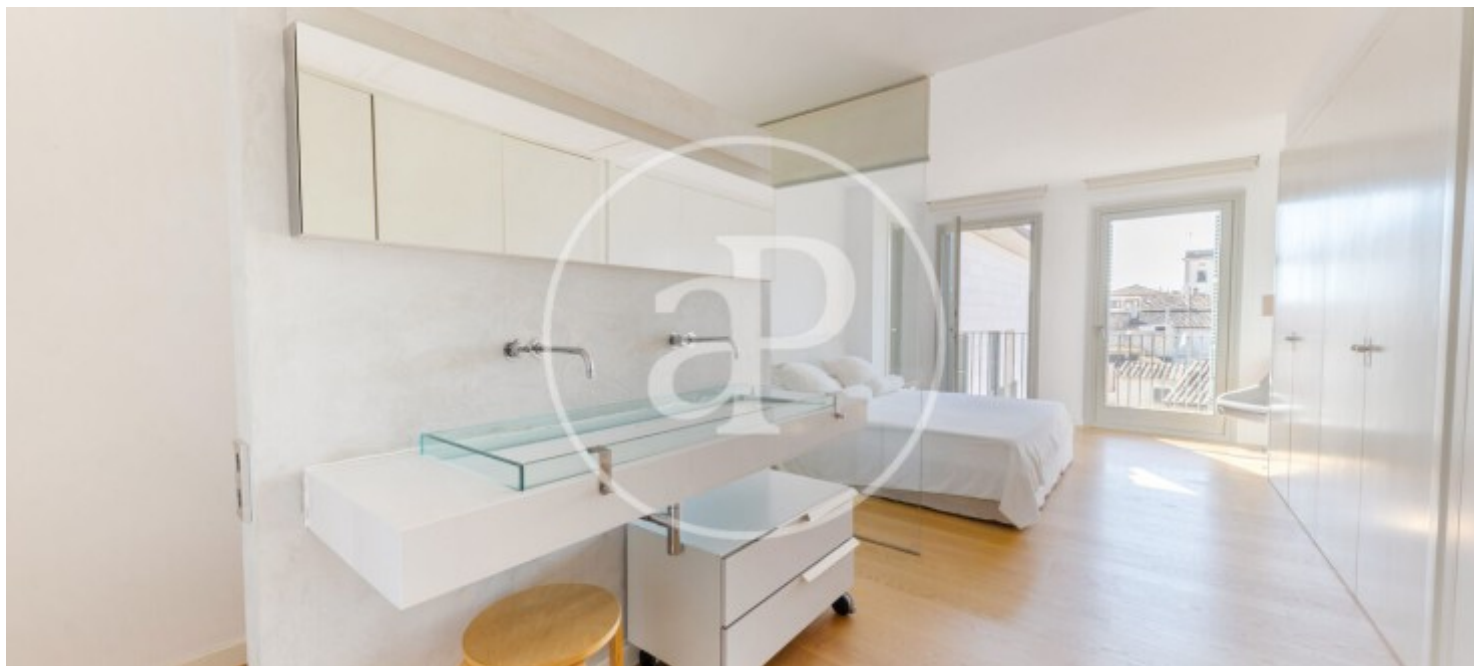
Sant Jaume, Palma de Mallorca

REF. VPM2504001



Sant Jaume, Palma de Mallorca

REF. VPM2504001



The information about any property is not binding to any offer or contract. Any verbal or written declaration made by aProperties with regards to the value or condition of the property should not be considered accurate or factual. The pictures make reference to some parts of the property at the times that they were taken. The areas, dimensions and distances that are given are approximate and should be checked by the client. The images are computer generated and are just an approximate indication of the real appearance of the property; these may change at any time. The information with regards to the property may also change at any time.

For **more information** or
to make an appointment

apropertiespalma@aproperties.es
Tel: 871 16 01 60
www.aproperties.es