

Sa Llotja, Palma de Mallorca

REF. APMS2307037



Fully refurbished flat for rent in La Lonja

Features

Surface

170 m²

Bedrooms

2

Bathrooms

2

✓ Furnished ✓ Terrace

Price

4,000 €



AVAILABLE FOR SHORT STAY.

It is a high standing furnished flat located in La Lonja. It has a modern style, with original elements of the house. Upon entering, the entrance hall gives access to a living room with sofa and state of the art TV and a large open plan kitchen equipped with all appliances. Throughout the living room there are large windows with balconies overlooking the Lonja. There is a laundry room with washing machine and dryer. There are two bedrooms. The first one is a master suite with a toilet, a complete bathroom with double sink with shower and a large built-in wardrobe. It is very bright thanks to its three large windows. The second one is a

double with a small terrace equipped with table and chairs, a home office space. The whole property has wooden and tiled floors, white walls and traditional ceilings with wooden beams, gas radiators and air conditioning. All expenses included in the price. The property is located a few metres from the Paseo Marítimo and the Paseo del Borne, in the heart of the Old Town, surrounded by all kinds of shops, leisure centres, means of transport and points of tourist and cultural interest. Can you imagine living here, we are waiting for your call!

Contact us,
we will be happy to assist you,
to offer you more details and information.

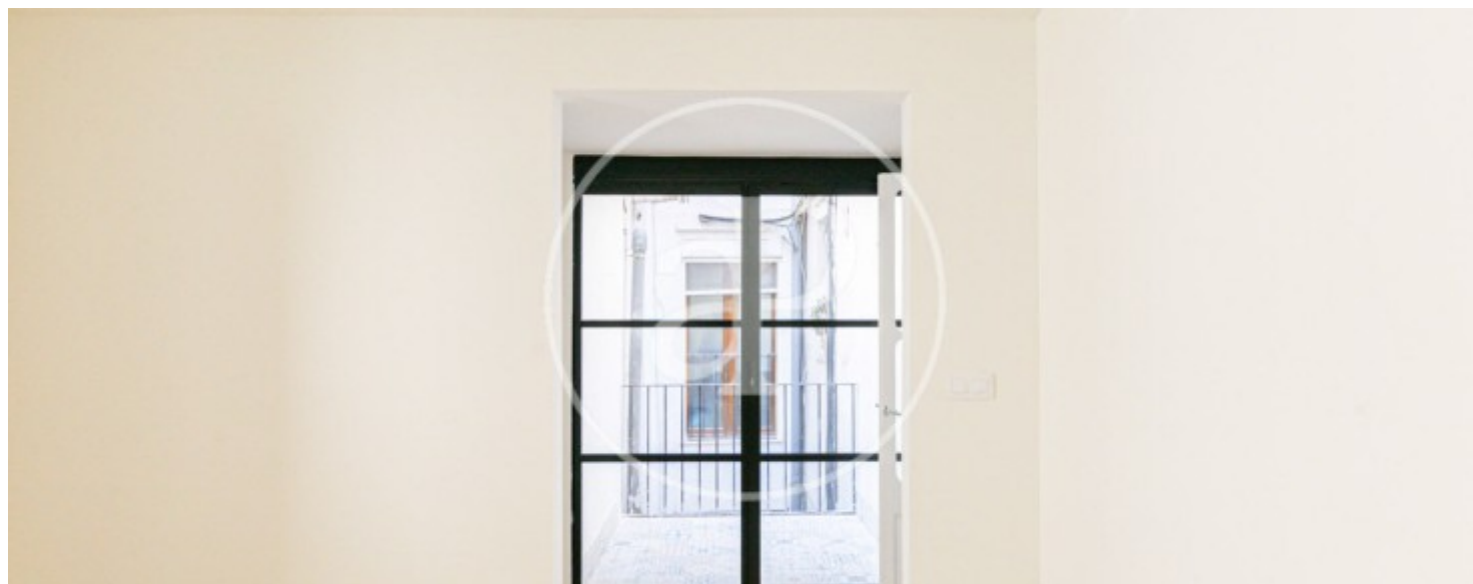
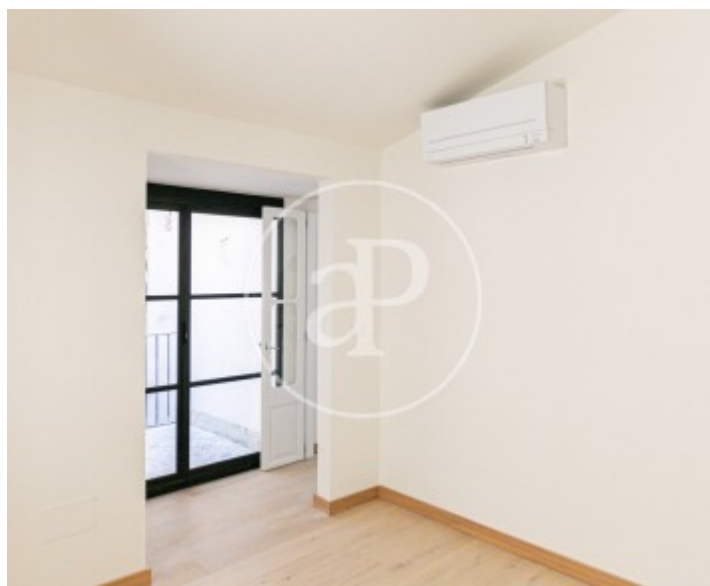
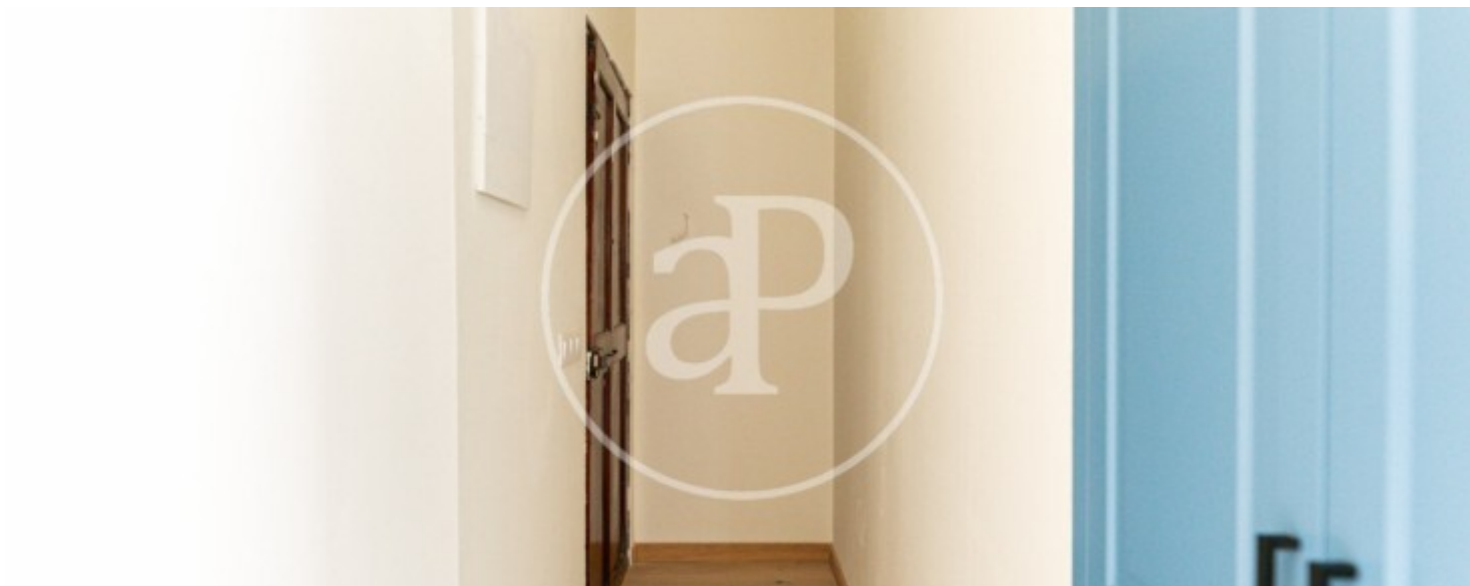
Sa Llotja, Palma de Mallorca

REF. APMS2307037



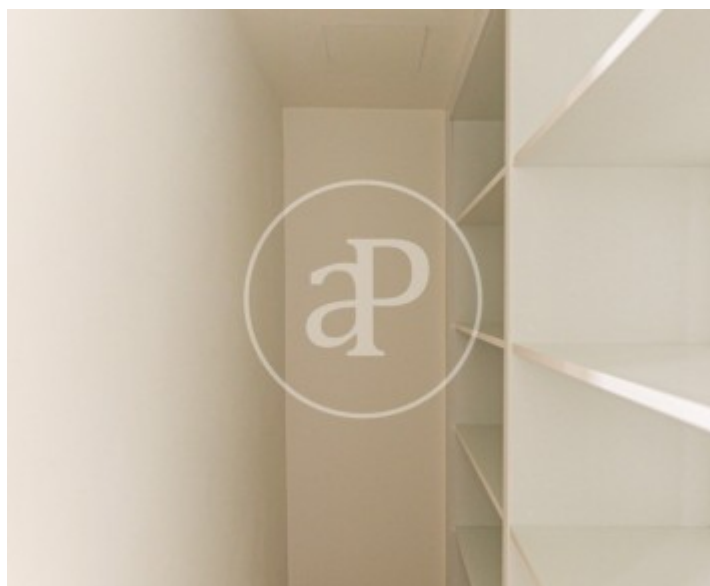
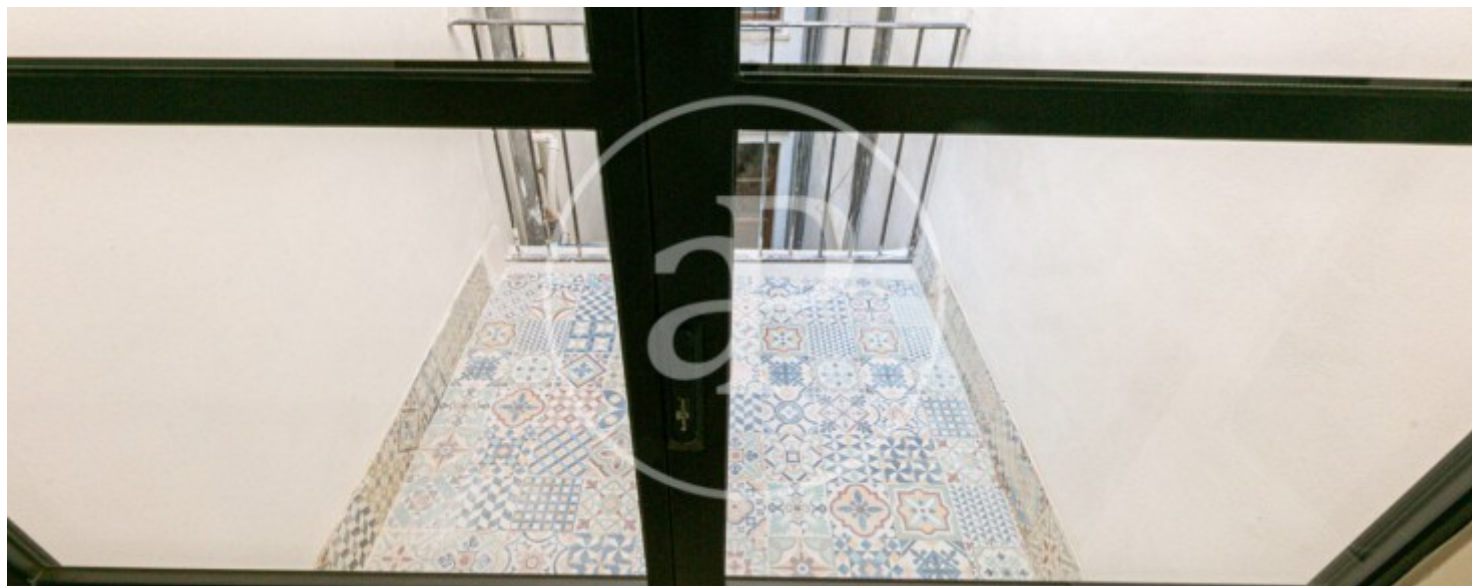
Sa Llotja, Palma de Mallorca

REF. APMS2307037



Sa Llotja, Palma de Mallorca

REF. APMS2307037



Sa Llotja, Palma de Mallorca

REF. APMS2307037



The information about any property is not binding to any offer or contract. Any verbal or written declaration made by aProperties with regards to the value or condition of the property should not be considered accurate or factual. The pictures make reference to some parts of the property at the times that they were taken. The areas, dimensions and distances that are given are approximate and should be checked by the client. The images are computer generated and are just an approximate indication of the real appearance of the property; these may change at any time. The information with regards to the property may also change at any time.



For **more information** or
to make an appointment

apropertiespalma@aproperties.es
Tel: 871 16 01 60
www.aproperties.es