

Sa Llotja, Palma de Mallorca

REF. APMS2604006

Fully refurbished apartment for rent in La Lonja

Features

- ✓ Furnished
- ✓ Terrace

Price
4,000 €

Surface

89 m²

Bedrooms

2

Bathrooms

2



AVAILABLE FOR TEMPORARY RENT FROM MAY (MAXIMUM 11 MONTHS / MINIMUM 32 NIGHTS) *FOR LONG-TERM RENTAL, PLEASE INQUIRE This is a high-end furnished apartment located in La Lonja.

It features a modern style combined with original elements of the property. Upon entering, the entrance hall leads to a large open-plan kitchen fully equipped with all appliances, and a living area with a sofa and a state-of-the-art TV. Along the living room, there are large windows with balconies overlooking La Lonja. The property has two bedrooms. The first is a master suite with a guest toilet, a full bathroom with double sink and walk-in shower, and a large built-in wardrobe. It is very

bright thanks to its three large windows. The second is a double bedroom with a small terrace and a private bathroom with a small dressing area. The entire property features wooden and tiled floors, white walls, traditional ceilings with wooden beams, gas central heating, and air conditioning. The property is located just a few meters from Paseo Marítimo and Paseo del Borne, in the heart of the Old Town, surrounded by all kinds of shops, leisure areas, public transport, and cultural and tourist attractions. Can you imagine living here? We look forward to your call! Prices depending...

Contact us,
we will be happy to assist you,
to offer you more details and information.

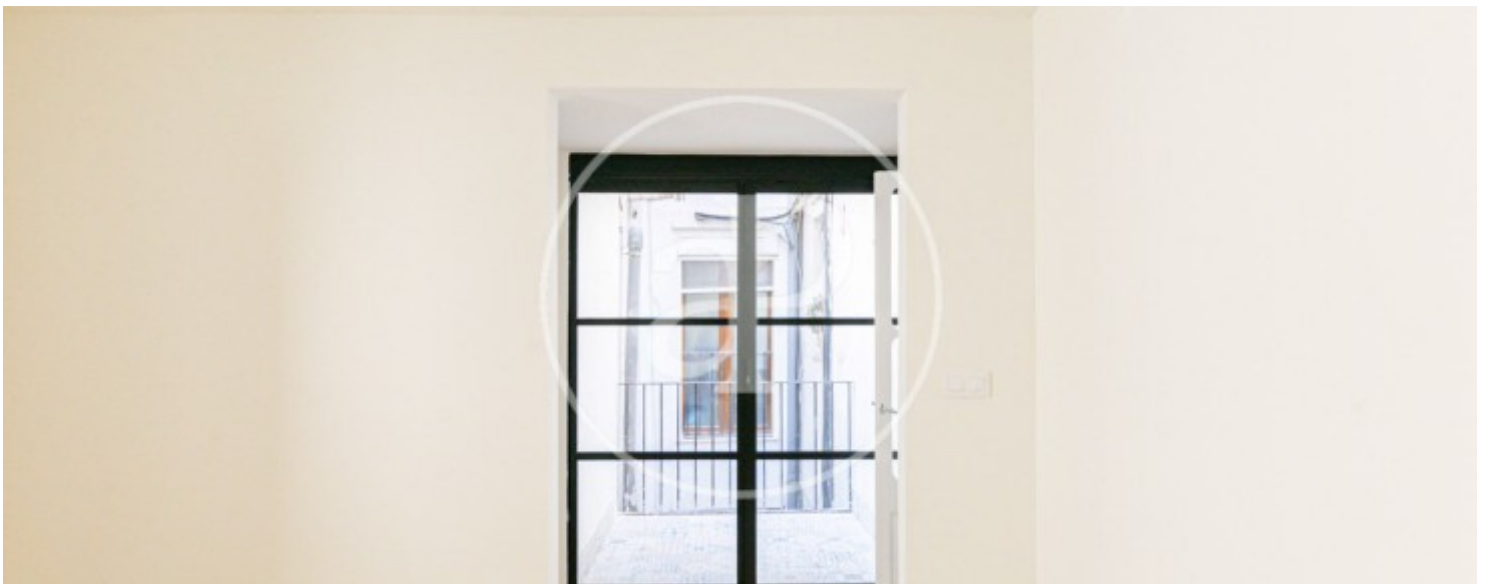
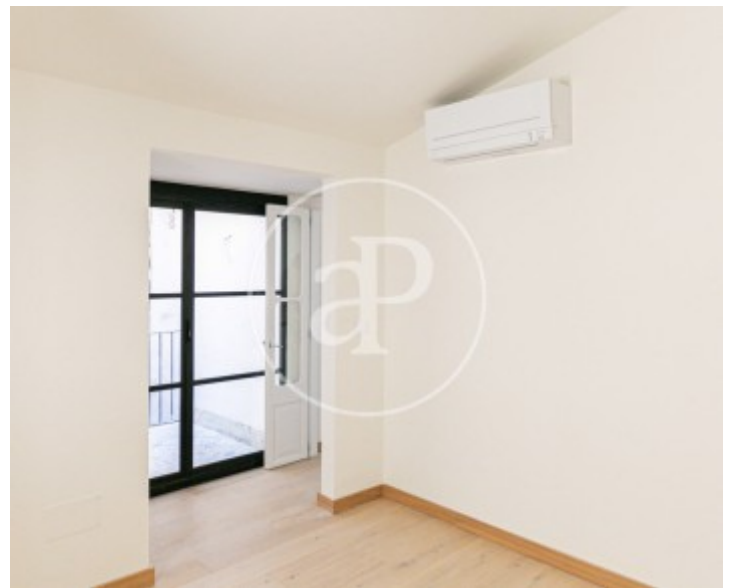
Sa Llotja, Palma de Mallorca

REF. APMS2604006



Sa Llotja, Palma de Mallorca

REF. APMS2604006



Sa Llotja, Palma de Mallorca

REF. APMS2604006



Sa Llotja, Palma de Mallorca

REF. APMS2604006



The information about any property is not binding to any offer or contract. Any verbal or written declaration made by aProperties with regards to the value or condition of the property should not be considered accurate or factual. The pictures make reference to some parts of the property at the times that they were taken. The areas, dimensions and distances that are given are approximate and should be checked by the client. The images are computer generated and are just an approximate indication of the real appearance of the property; these may change at any time. The information with regards to the property may also change at any time.

For **more information** or
to make an appointment

apropertiespalma@aproperties.es
Tel: 871 16 01 60
www.aproperties.es