

Sa Llotja, Palma de Mallorca

REF. VPM2604019

Apartamento en venta en el Casco antiguo de Palma

Features

- ✓ Heating
- ✓ AACC
- ✓ Lift
- ✓ Furnished
- ✓ Terrace

Price

1,150,000 €

Surface

83 m²

Bedroom

1

Bathroom

1



Elegant apartment completely renovated with high-quality materials, located on a central yet quiet street in the heart of Palma.

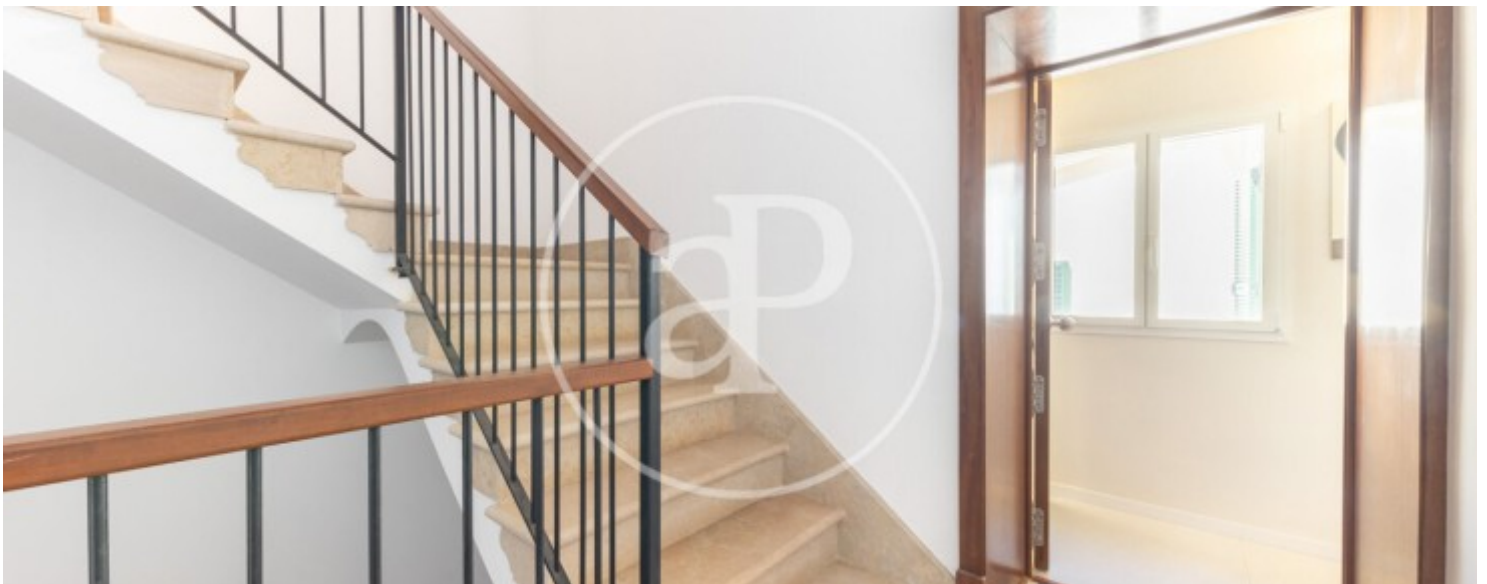
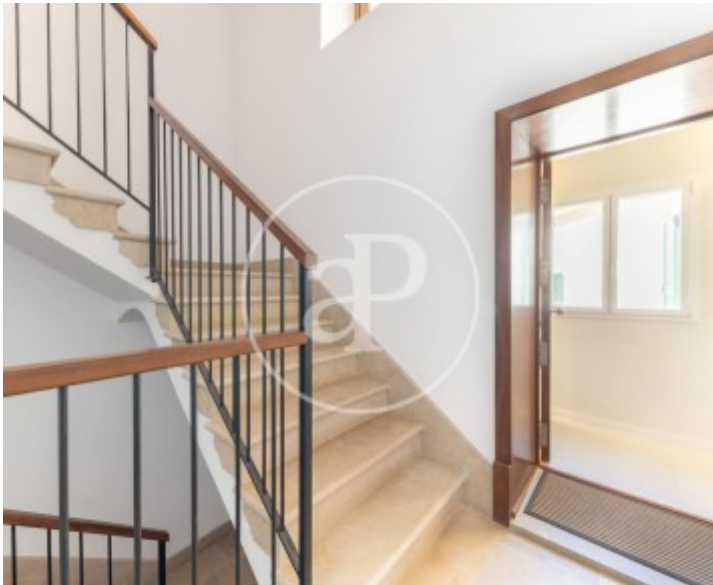
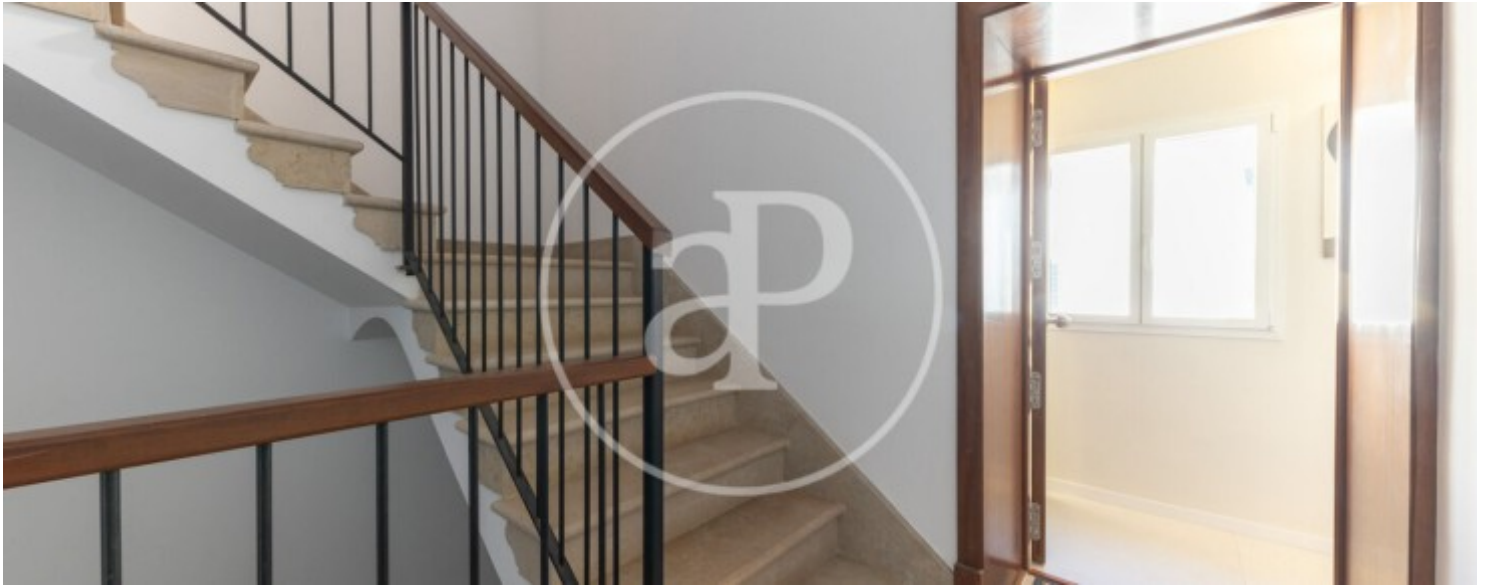
The area stands out for its wide cultural offering, with renowned art galleries and museums, as well as an excellent selection of exclusive shops and designer boutiques. The property is located in a former Mallorcan palace that has been carefully restored, just a few steps from the emblematic Paseo del Born, one of the city's most prestigious avenues, surrounded by luxury shops, top-tier restaurants, and iconic hotels. In addition, it enjoys a privileged location close to the Paseo Marítimo and the main historical monuments,

such as the Cathedral and Almudaina Palace. This unique property combines traditional Mallorcan character and charm with all contemporary comforts. It offers one bedroom, one full bathroom and a guest toilet, as well as a fully equipped open-plan kitchen. The spacious and bright living room connects directly to a pleasant terrace, creating a warm Mediterranean space ideal for enjoying the outdoors. The building has a lift, and the apartment is equipped with ducted air conditioning and underfloor heating to ensure maximum comfort throughout the year. Parquet flooring adds an extra touch of...

Contact us,
we will be happy to assist you,
to offer you more details and information.

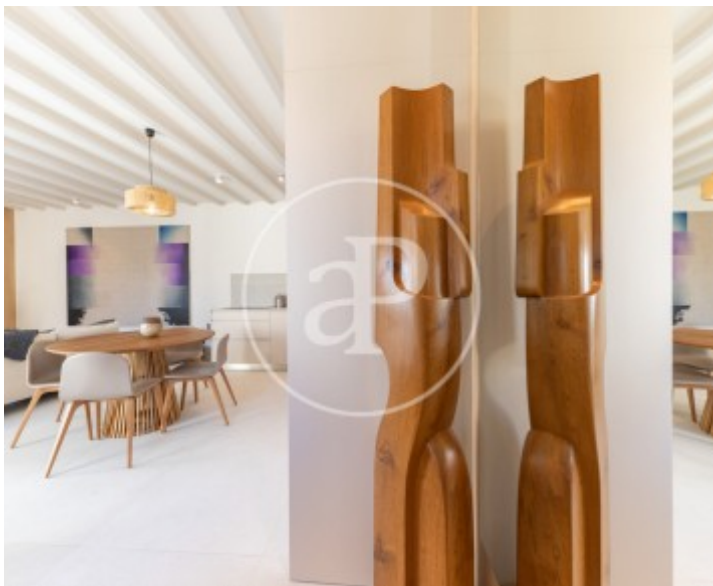
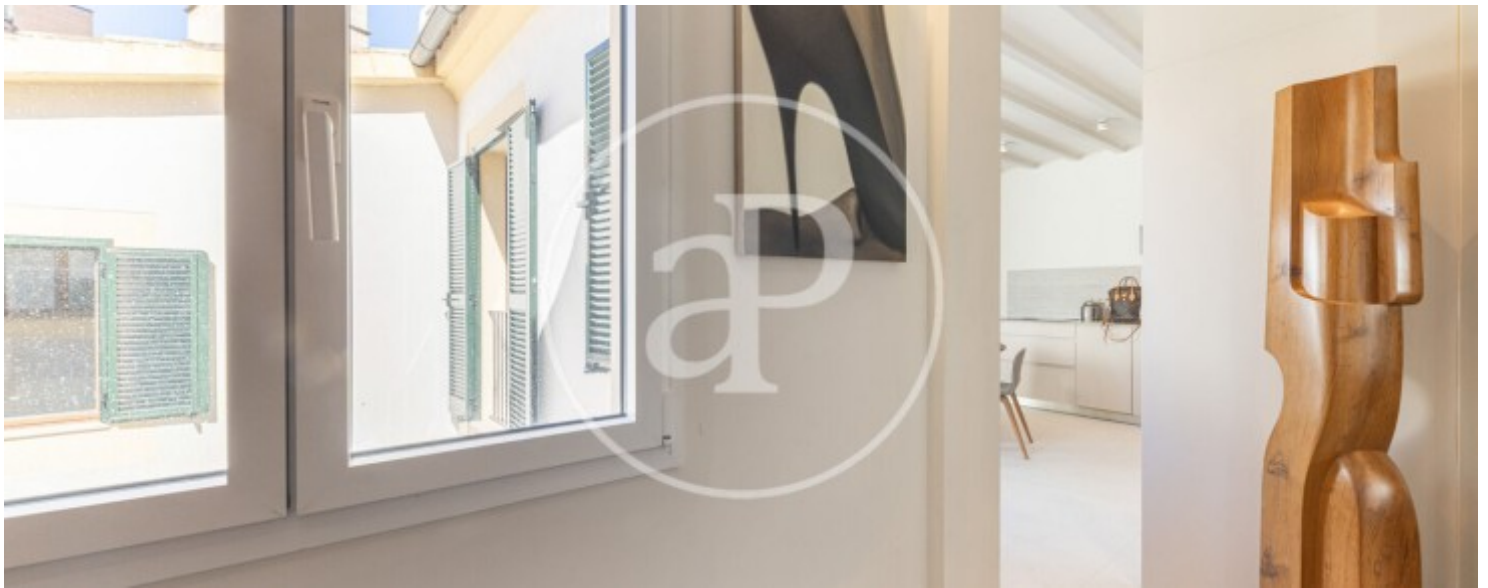
Sa Llotja, Palma de Mallorca

REF. VPM2604019



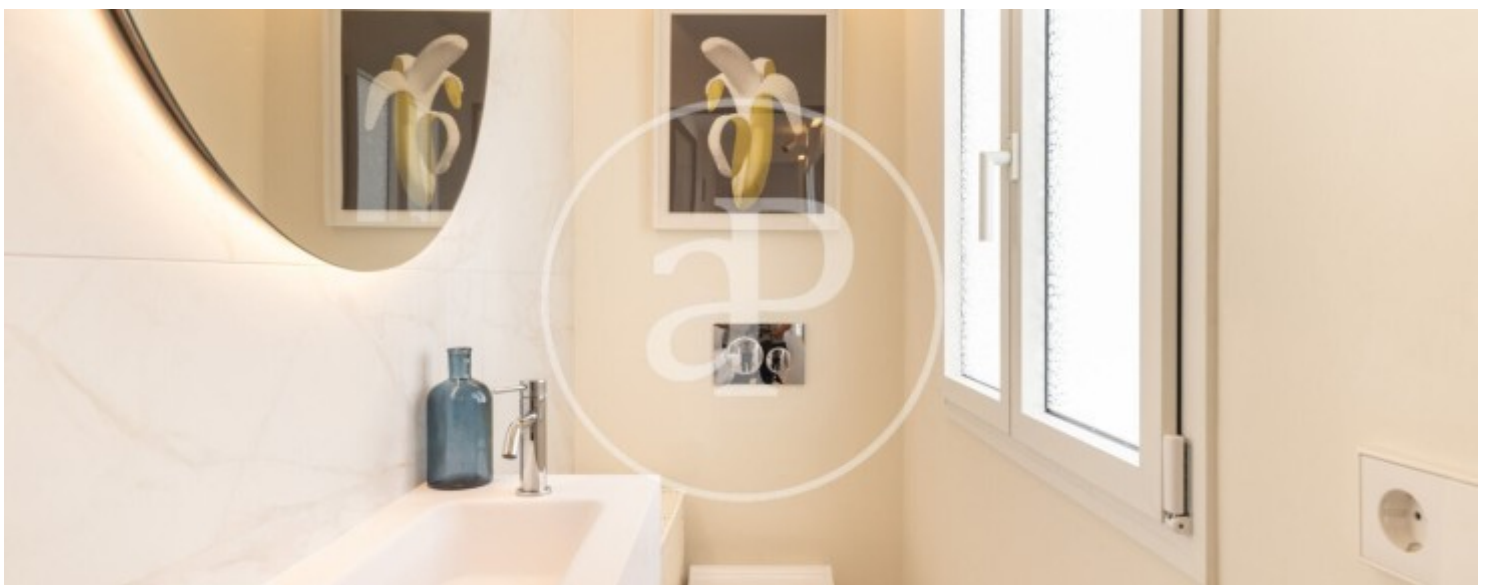
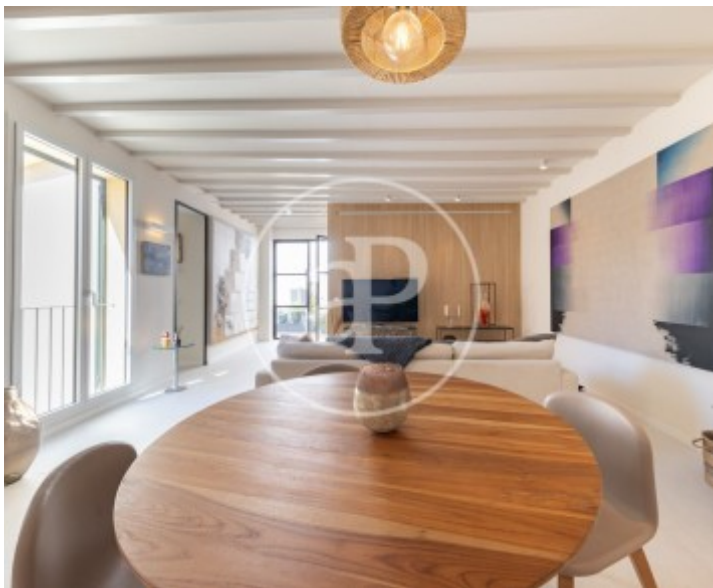
Sa Llotja, Palma de Mallorca

REF. VPM2604019



Sa Llotja, Palma de Mallorca

REF. VPM2604019



Sa Llotja, Palma de Mallorca

REF. VPM2604019



The information about any property is not binding to any offer or contract. Any verbal or written declaration made by aProperties with regards to the value or condition of the property should not be considered accurate or factual. The pictures make reference to some parts of the property at the times that they were taken. The areas, dimensions and distances that are given are approximate and should be checked by the client. The images are computer generated and are just an approximate indication of the real appearance of the property; these may change at any time. The information with regards to the property may also change at any time.

For **more information** or
to make an appointment

apropertiespalma@aproperties.es
Tel: 871 16 01 60
www.aproperties.es