



Sa Llotja, Palma de Mallorca

REF. APM2511015

Apartment for rent in Sa Llotja

Features

Surface

80 m²

Bedroom

1

Bathroom

1

✓ Terrace

Price

1,250 €



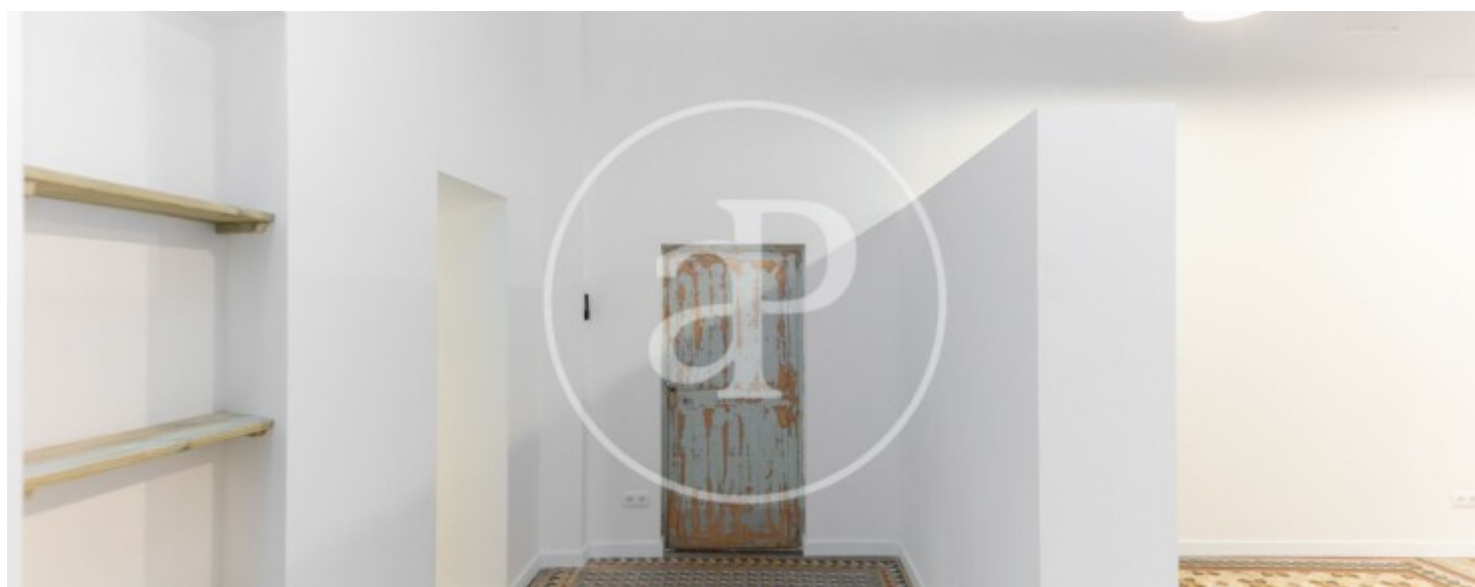
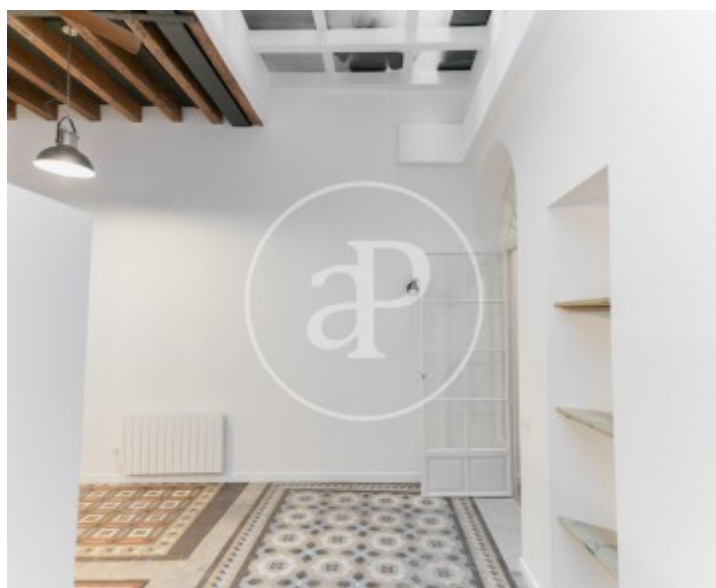
ONE-BEDROOM LOFT-STYLE APARTMENT, NEWLY RENOVATED Newly renovated one-bedroom loft-style apartment located in the very heart of the city, just a few meters from the seafront promenade and Paseo del Borne. Surrounded by all kinds of shops, leisure centers, public transport, and tourist and cultural attractions, this exclusive apartment features a modern style with an industrial touch, combining the recovery of the property's original elements. Upon entering, the hall leads to a corridor connecting to the main room with an open-plan kitchen equipped with an electric stove and oven, fridge, and dishwasher. The living area has a gallery balcony overlooking an inner garden. Continuing down the corridor toward the back street, there is a double bedroom with a window, and to its left, a full bathroom

with a shower tray and a small laundry area with a washing machine. The entire apartment features a mix of different types of flooring — wood, ceramic, and original restored hydraulic tiles — white walls, traditional wooden beam ceilings, restored period doors, electric radiators throughout, and ceiling fans. Community fees, Wi-Fi, and property tax (IBI) are included in the price. Available from December 3rd, 2025, for long-term rentals only. Can you imagine living here?

Contact us,
we will be happy to assist you,
to offer you more details and information.

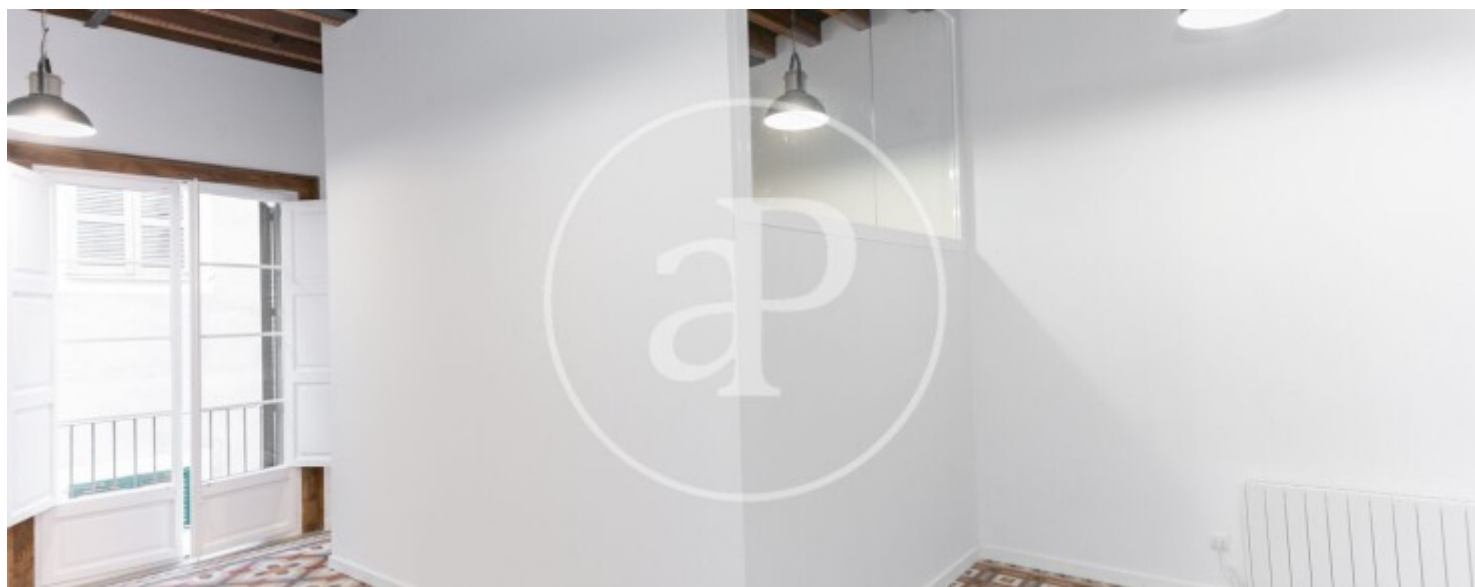
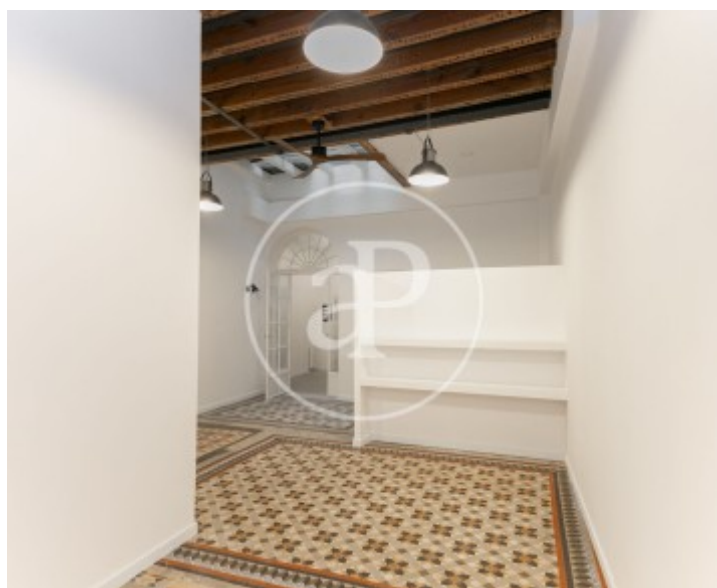
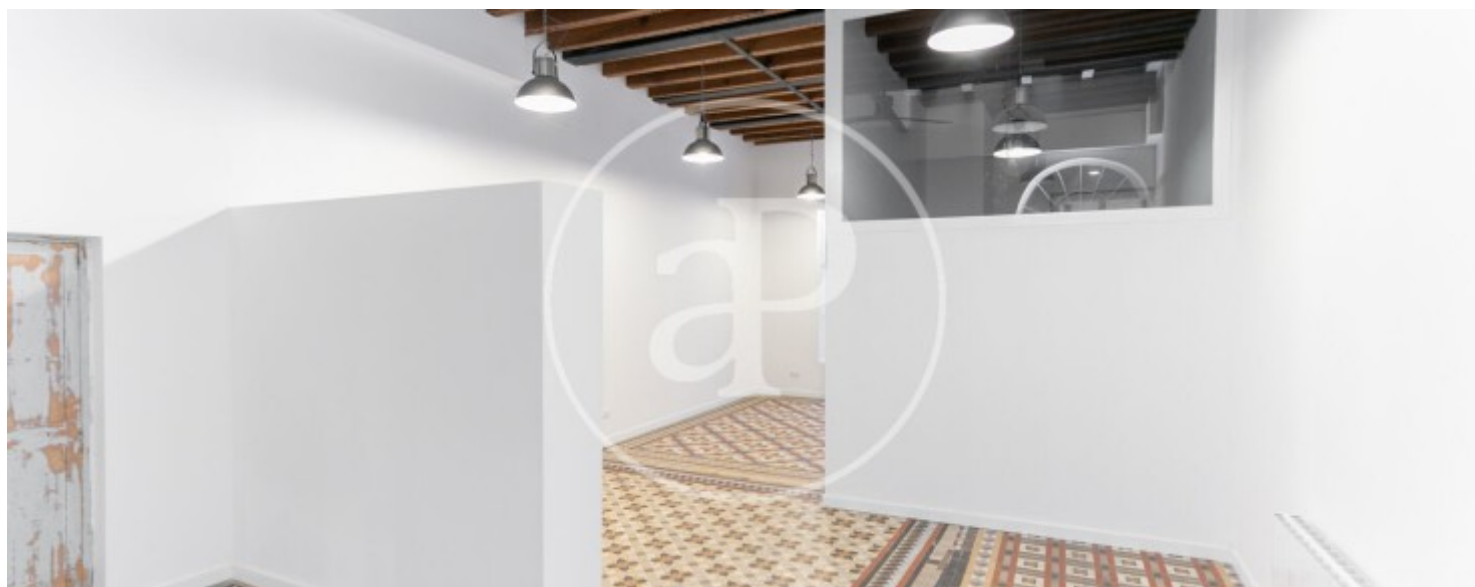
Sa Llotja, Palma de Mallorca

REF. APM2511015



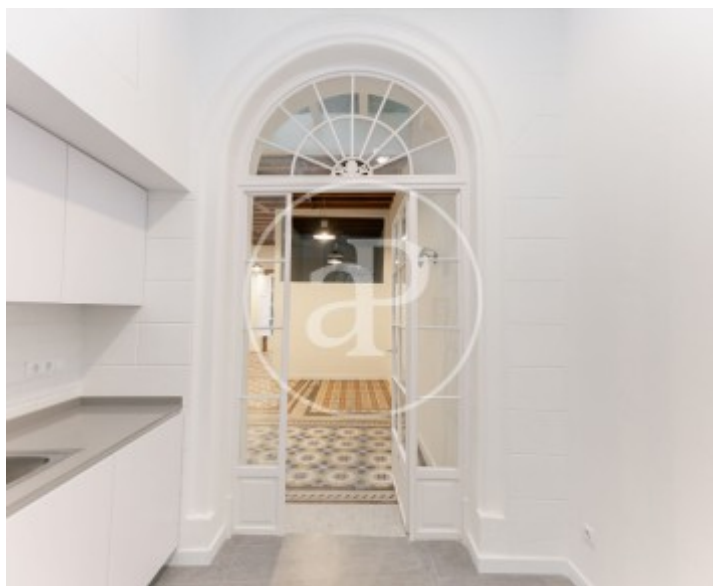
Sa Llotja, Palma de Mallorca

REF. APM2511015



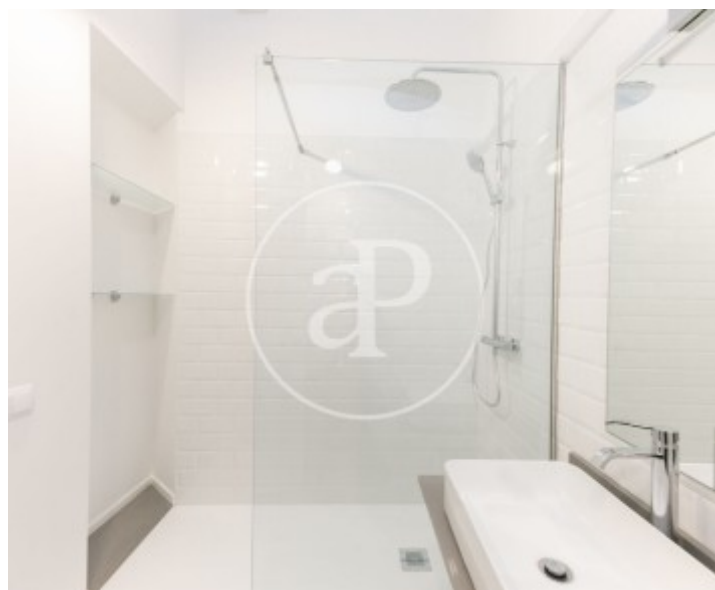
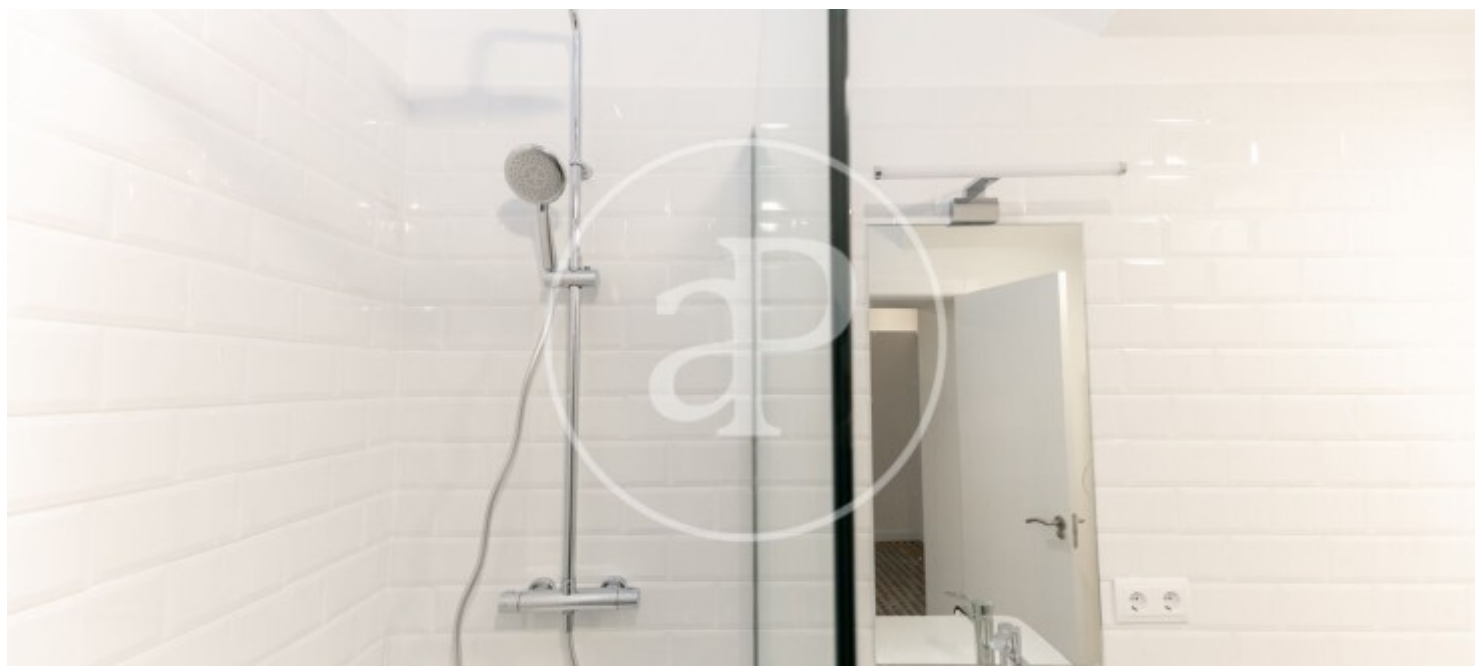
Sa Llotja, Palma de Mallorca

REF. APM2511015



Sa Llotja, Palma de Mallorca

REF. APM2511015



The information about any property is not binding to any offer or contract. Any verbal or written declaration made by aProperties with regards to the value or condition of the property should not be considered accurate or factual. The pictures make reference to some parts of the property at the times that they were taken. The areas, dimensions and distances that are given are approximate and should be checked by the client. The images are computer generated and are just an approximate indication of the real appearance of the property; these may change at any time. The information with regards to the property may also change at any time.

For **more information** or
to make an appointment

apropertiespalma@aproperties.es
Tel: 871 16 01 60
www.aproperties.es