

Sa Calatrava, Palma de Mallorca

REF. APMS2207040



Flat for rent in the Old Town of Palma

Features

Surface

80 m²

Bedrooms

2

Bathrooms

2

✓ Heating ✓ Furnished

✓ AACC ✓ Terrace

Price

2,250 €



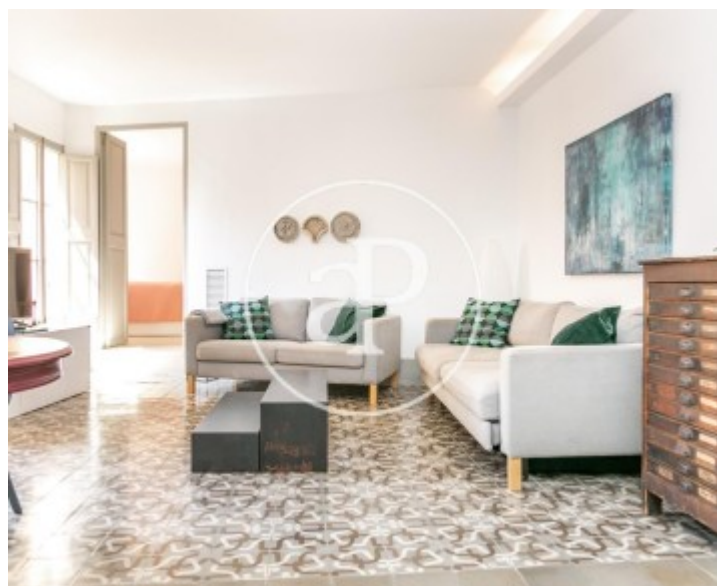
ONLY AVAILABLE FOR TEMPORARY RENT FROM THE 12TH OF AUGUST In the traditional neighbourhood of Sa Calatrava, 100 m away from the Avenidas that communicate with the main roads of Mallorca, five minutes walking distance to the beaches of Palma and surrounded by parks and the best gastronomy of the city, is located this traditional Majorcan flat in a building of the year 1900. In the daytime area, this typical flat features a spacious living/dining room equipped with a television and comfortable sofas. The living room connects with an open plan kitchen fully equipped with electrical appliances and utensils for a comfortable stay. From the living room, there is access to a large balcony with outdoor furniture, ideal for breakfast. From the living-dining room you access the two double bedrooms, one with a

double bed and the second with two single beds, both with rustic style wardrobes. Both bedrooms have en-suite bathrooms, one with a bath and the second with a shower, equipped with all the necessities for your stay. The rent includes electricity, water, gas and high speed internet. Cleaning costs at the end of the stay of 60 €. Ideal flat for couples and families due to its easy accessibility. Public car parks nearby. Available from June 2022. Price on request ¿can you imagine living here?

Contact us,
we will be happy to assist you,
to offer you more details and information.

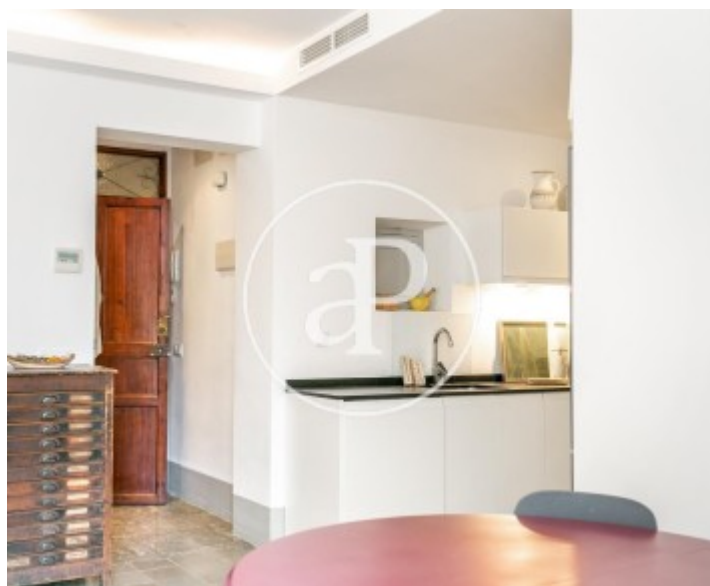
Sa Calatrava, Palma de Mallorca

REF. APMS2207040



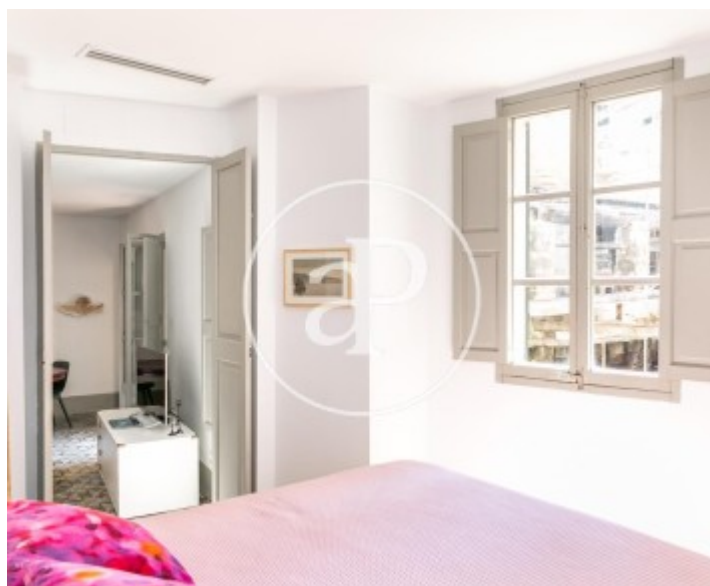
Sa Calatrava, Palma de Mallorca

REF. APMS2207040



Sa Calatrava, Palma de Mallorca

REF. APMS2207040



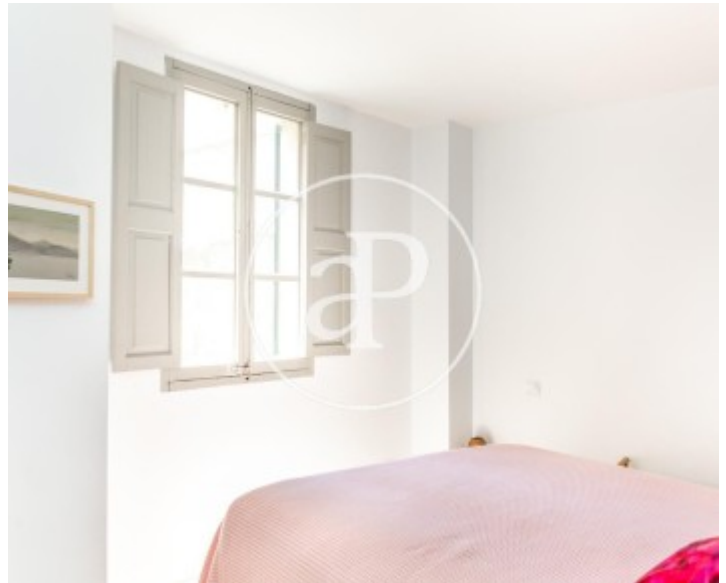


APROPERTIES
REAL ESTATE

Calle Unió 9
07001 Palma
T. 871 16 01 60
www.aproperties.es

Sa Calatrava, Palma de Mallorca

REF. APMS2207040



The information about any property is not binding to any offer or contract. Any verbal or written declaration made by aProperties with regards to the value or condition of the property should not be considered accurate or factual. The pictures make reference to some parts of the property at the times that they were taken. The areas, dimensions and distances that are given are approximate and should be checked by the client. The images are computer generated and are just an approximate indication of the real appearance of the property; these may change at any time. The information with regards to the property may also change at any time.



**For more information or
to make an appointment**

apropertiespalma@aproperties.es
Tel: 871 16 01 60
www.aproperties.es