



Sa Calatrava, Palma de Mallorca

REF. VPM2303048

Flat for sale with lift in Sa Calatrava

Features

- ✓ Views
- ✓ Heating
- ✓ Lift
- ✓ Has parking

Price

365,000 €

Surface

85 m²

Bedrooms

3

Bathroom

1



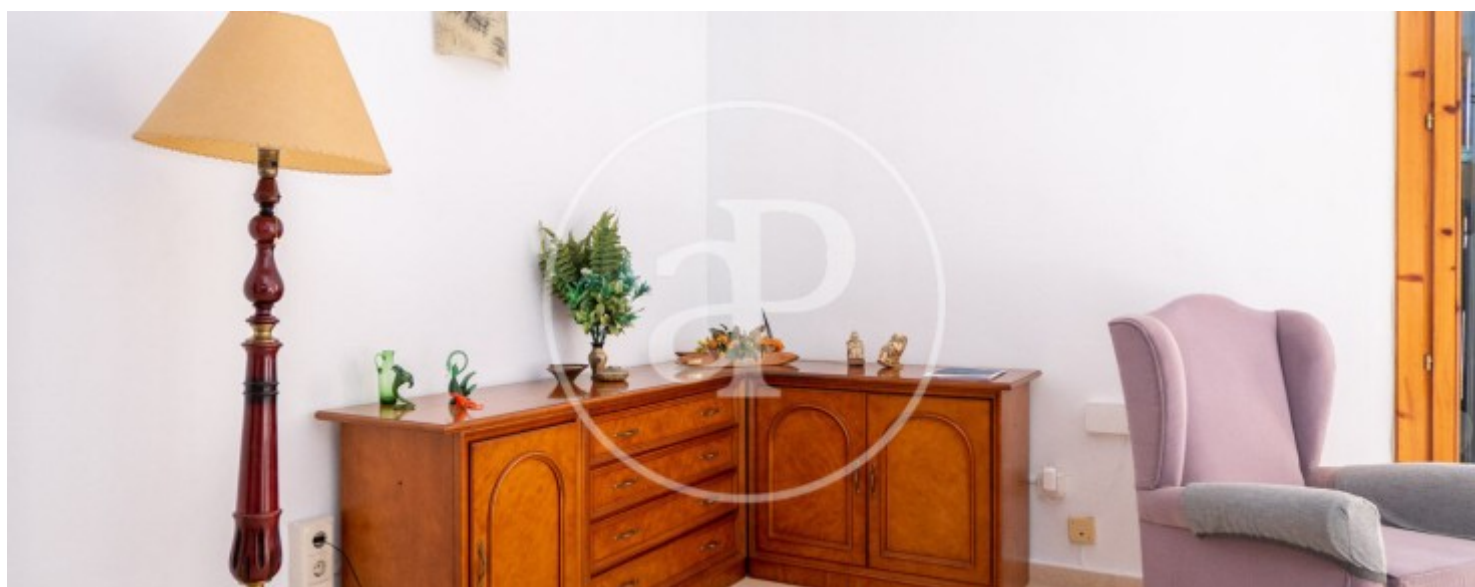
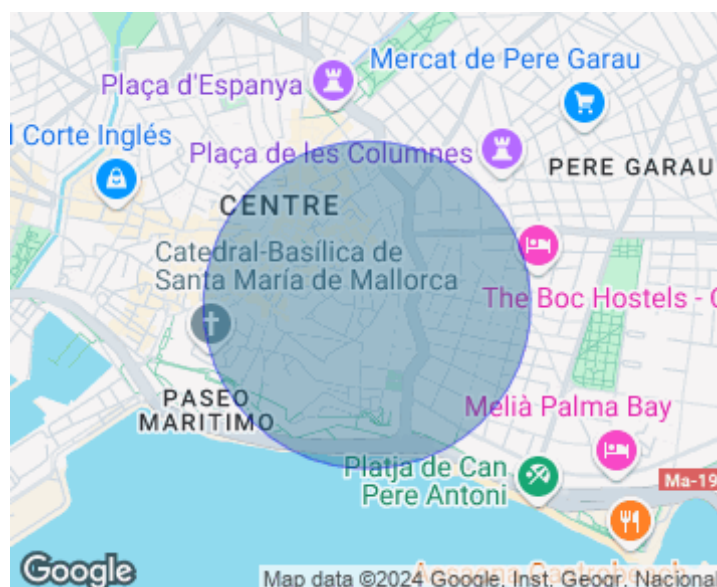
This is a first floor flat in a beautiful property with lift built in 2001 in a very quiet square between Sant Francesc church and Avenidas, a few minutes walking distance to shopping centres, small shops and the new leisure area and restaurants, as well as the seafront promenade. The property has 73qm. From the entrance hall, on the right hand side, there is access to the bright living/dining room with a large floor to ceiling window leading out onto a lovely balcony with unobstructed views of the square and the beautiful bell tower of the church of Sant Francesc. It has a spacious kitchen equipped with electrical appliances and a laundry room with views to the picturesque inner courtyard. The flat has three totally exterior bedrooms, all of them with built-in wardrobes and a complete bathroom with

shower. The equipment includes security door, wooden interior and exterior carpentry -the exterior with double glazing-, hydraulic tiled floors, air conditioning, natural gas and optional parking 30.000€ which can be accessed from the same property. All these features and its location make this property a unique opportunity to live in the heart of the old town in a quiet location and at the same time have all the comforts and services. Can you imagine living here, we are waiting for your call!

Contact us,
we will be happy to assist you,
to offer you more details and information.

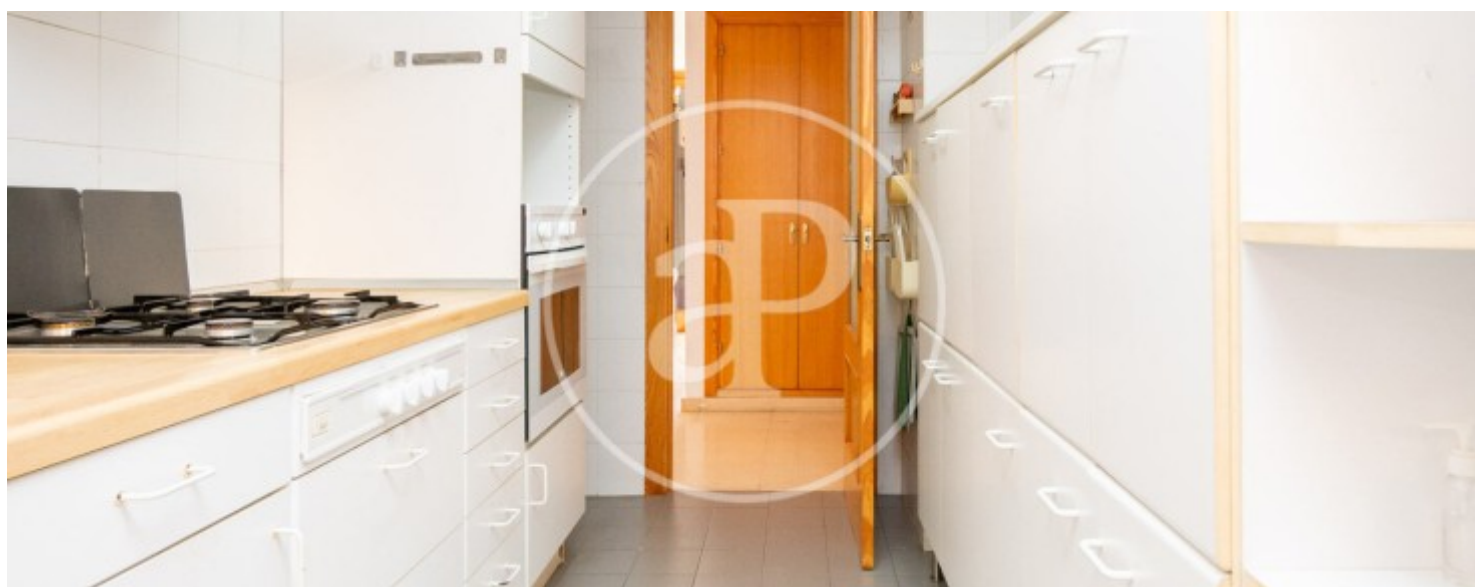
Sa Calatrava, Palma de Mallorca

REF. VPM2303048



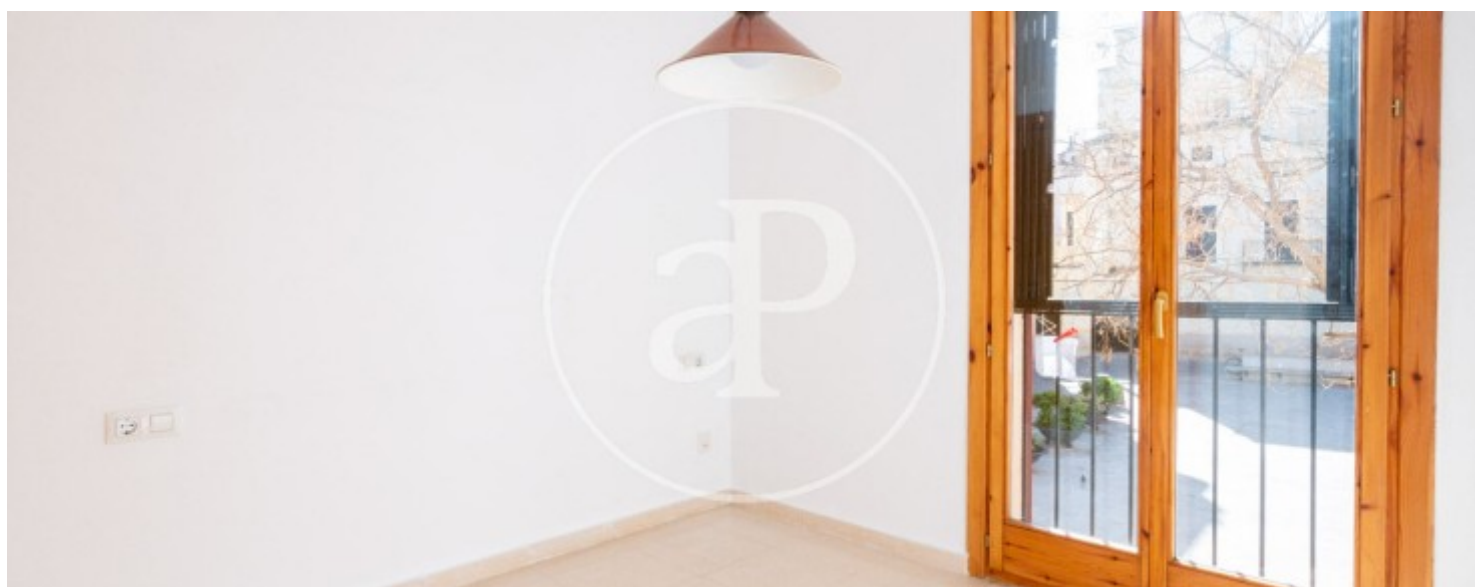
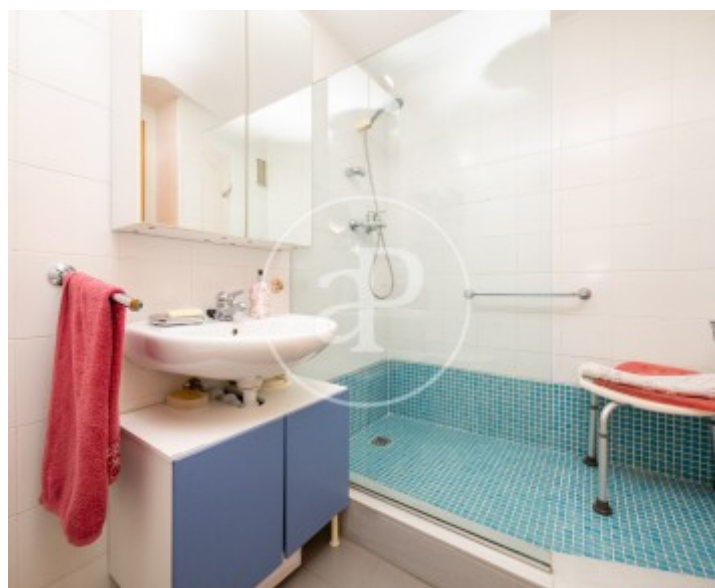
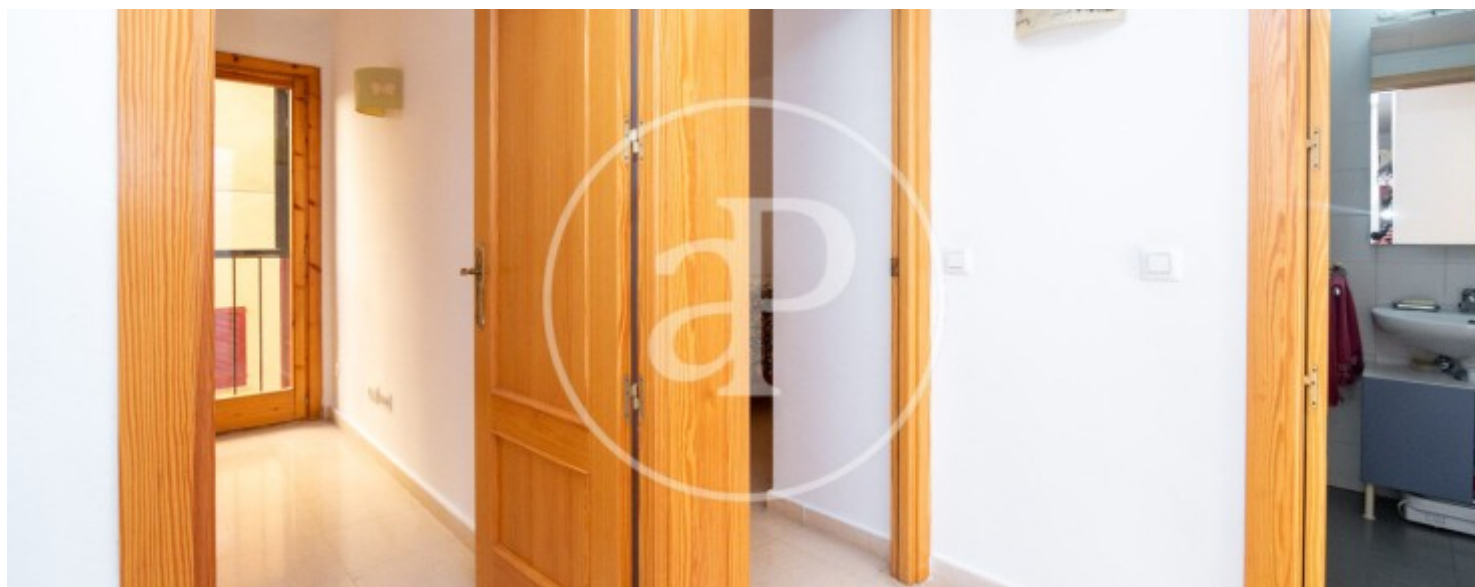
Sa Calatrava, Palma de Mallorca

REF. VPM2303048



Sa Calatrava, Palma de Mallorca

REF. VPM2303048



Sa Calatrava, Palma de Mallorca

REF. VPM2303048



The information about any property is not binding to any offer or contract. Any verbal or written declaration made by aProperties with regards to the value or condition of the property should not be considered accurate or factual. The pictures make reference to some parts of the property at the times that they were taken. The areas, dimensions and distances that are given are approximate and should be checked by the client. The images are computer generated and are just an approximate indication of the real appearance of the property; these may change at any time. The information with regards to the property may also change at any time.

For **more information** or
to make an appointment

apropertiespalma@aproperties.es
Tel: 871 16 01 60
www.aproperties.es