

Sa Calatrava, Palma de Mallorca

REF. APMS2605008

Apartment for rent in Sa Calatrava

Features

- ✓ Views
- ✓ AACC
- ✓ Has parking
- ✓ Furnished
- ✓ Lift

Price
1,800 €

Surface

80 m²

Bedrooms

2

Bathroom

1



ONLY AVAILABLE FOR SHORT-TERM RENTAL (minimum 2 months).

REFERENCED TENANTS ONLY. AVAILABLE FROM JUNE 25ST This is a Mallorcan-style apartment located in the traditional neighborhood of Sa Calatrava, just 100m from the main avenues connecting to Mallorca's major roads. It's only a five-minute walk from Palma's beaches, surrounded by parks and some of the city's best gastronomy. The property features two bedrooms, one double and one spacious single with built-in wardrobes. Both are connected through the night area with a fully equipped bathroom to ensure a comfortable stay. The living-dining room is fully furnished with sofas and a

dining table, offering views of the city. Parking included. Prices by time and duration:
July–September: 2,000 euros More than 5 months:
1,800 euros

Contact us,
we will be happy to assist you,
to offer you more details and information.

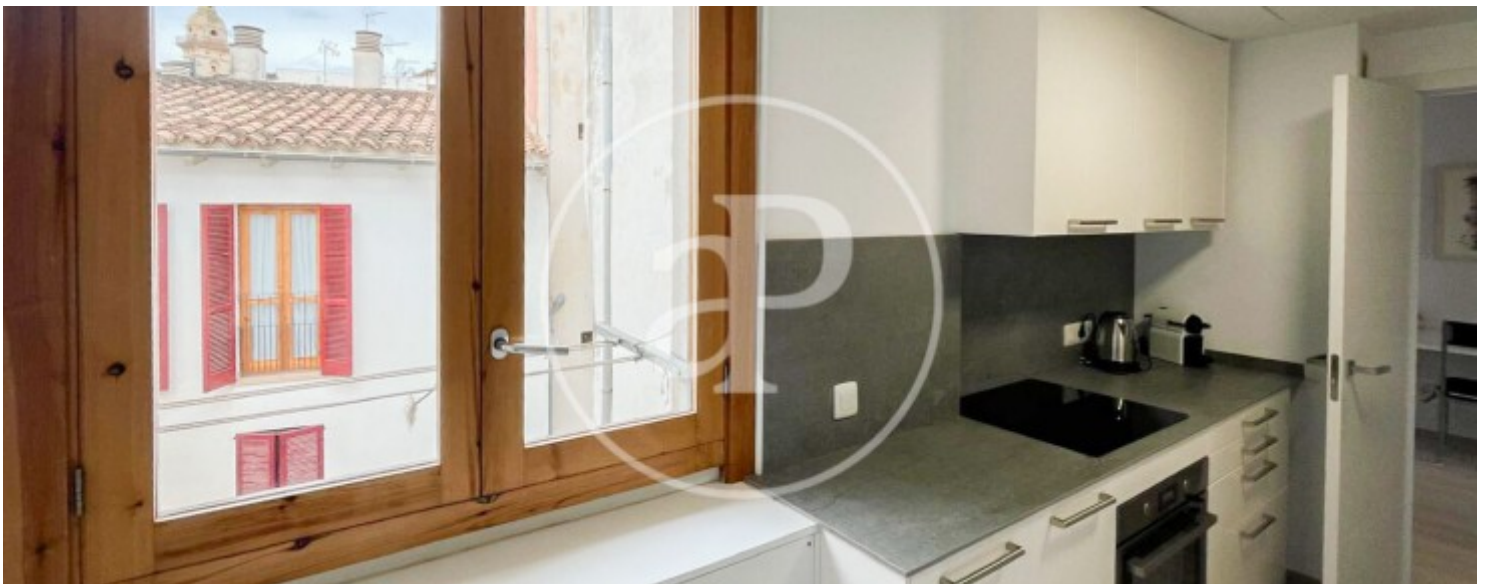
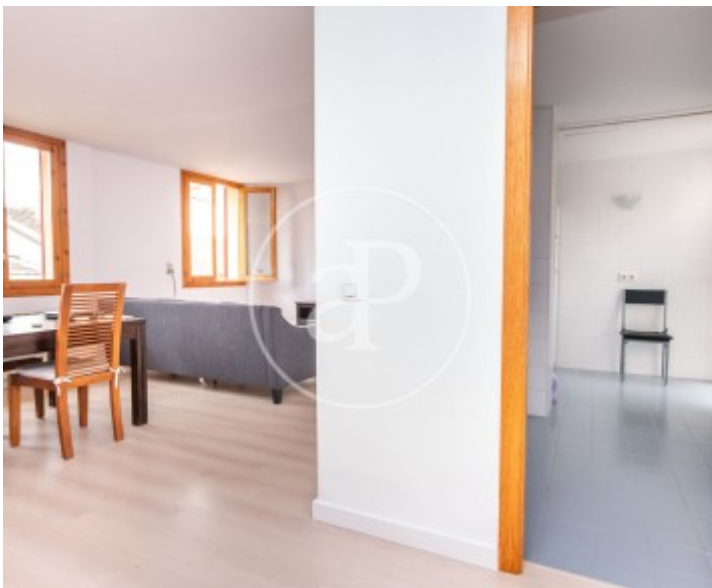
Sa Calatrava, Palma de Mallorca

REF. APMS2605008



Sa Calatrava, Palma de Mallorca

REF. APMS2605008



Sa Calatrava, Palma de Mallorca

REF. APMS2605008



Sa Calatrava, Palma de Mallorca

REF. APMS2605008



The information about any property is not binding to any offer or contract. Any verbal or written declaration made by aProperties with regards to the value or condition of the property should not be considered accurate or factual. The pictures make reference to some parts of the property at the times that they were taken. The areas, dimensions and distances that are given are approximate and should be checked by the client. The images are computer generated and are just an approximate indication of the real appearance of the property; these may change at any time. The information with regards to the property may also change at any time.

For **more information** or
to make an appointment

apropertiespalma@aproperties.es
Tel: 871 16 01 60
www.aproperties.es