

Sa Calatrava, Palma de Mallorca

REF. APMS2508007

Flat for rent with balcony in the Old Town of Palma

Features

Surface

75 m²

Bedrooms

2

Bathrooms

2

✓ Furnished

✓ AACC

Price

1,950 €



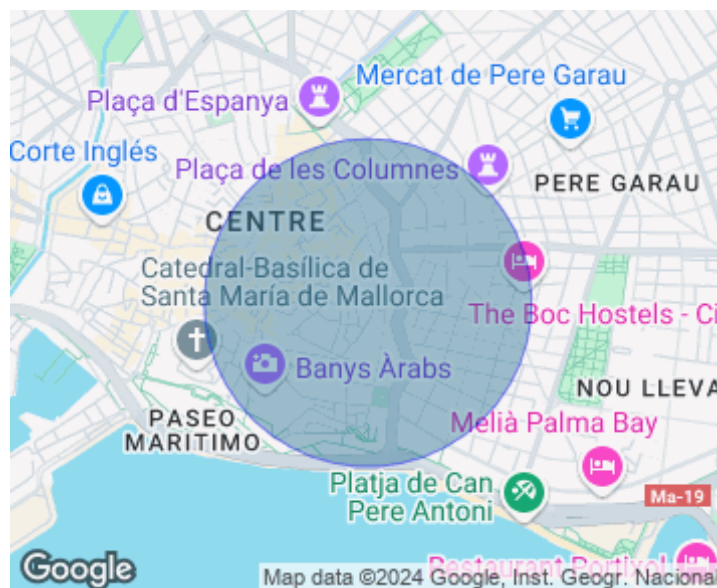
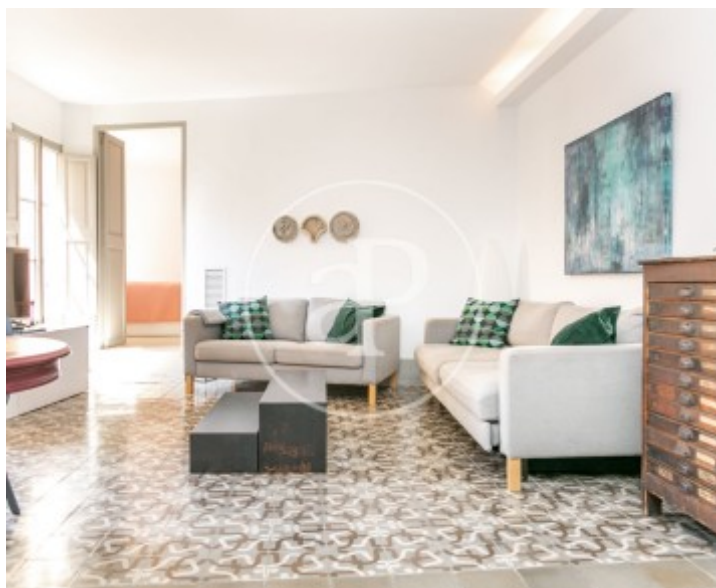
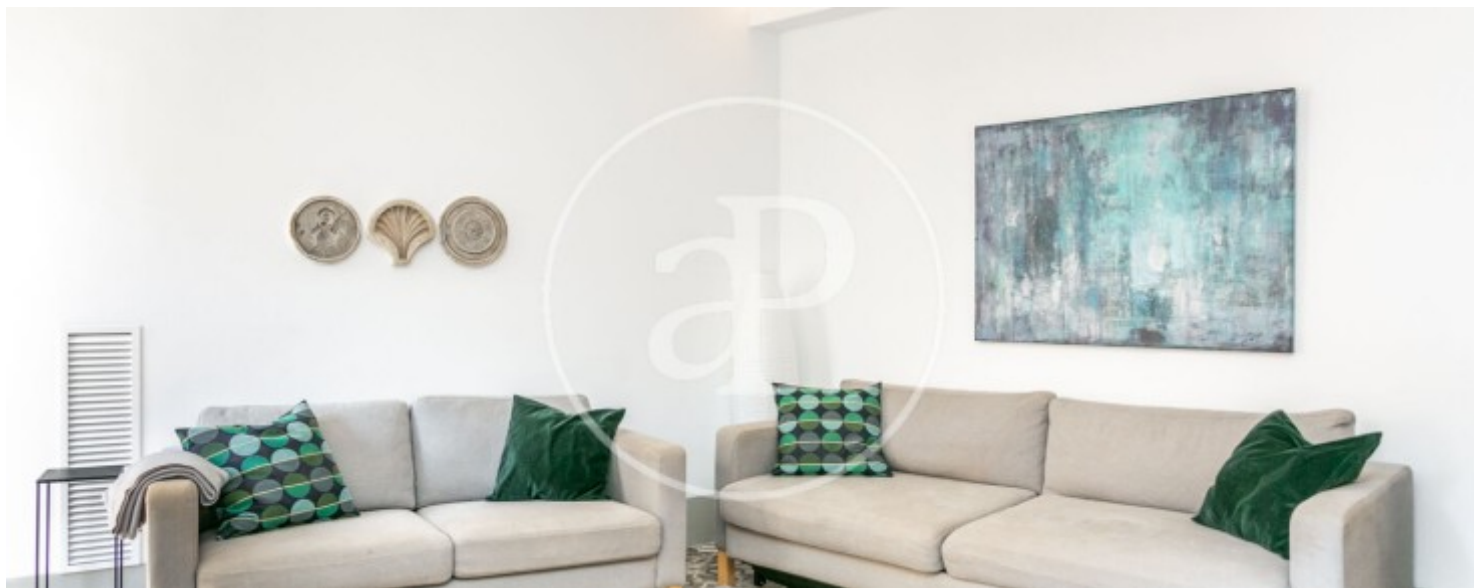
AVAILABLE FROM MARCH 16, 2026 In the traditional neighbourhood of Sa Calatrava, 100 metres away from the Avenidas that communicate with the main roads of Mallorca, five minutes walking from the beaches of Palma and surrounded by parks and the best gastronomy of the city, is located this traditional Majorcan flat in a building of the year 1900. In the daytime area, this flat has a spacious living/dining room equipped with a television and comfortable sofas. The living room connects with an open plan kitchen fully equipped with electrical appliances and utensils for a comfortable stay. From the living room, there is access to a large balcony with outdoor furniture. From the living-dining room there is access to the two double bedrooms, one with a double bed and the second with two single beds, both with

rustic style wardrobes. Both bedrooms have en suite bathrooms, one with bathtub and the second with shower, equipped with all the necessities for your stay. The rent includes electricity, water, gas and high speed internet. Cleaning costs at the end of the stay of 60 €. Ideal flat for couples and families due to its easy accessibility. Public car parks nearby. For other dates and prices, please consult. Can you imagine living here, we are waiting for your call!

Contact us,
we will be happy to assist you,
to offer you more details and information.

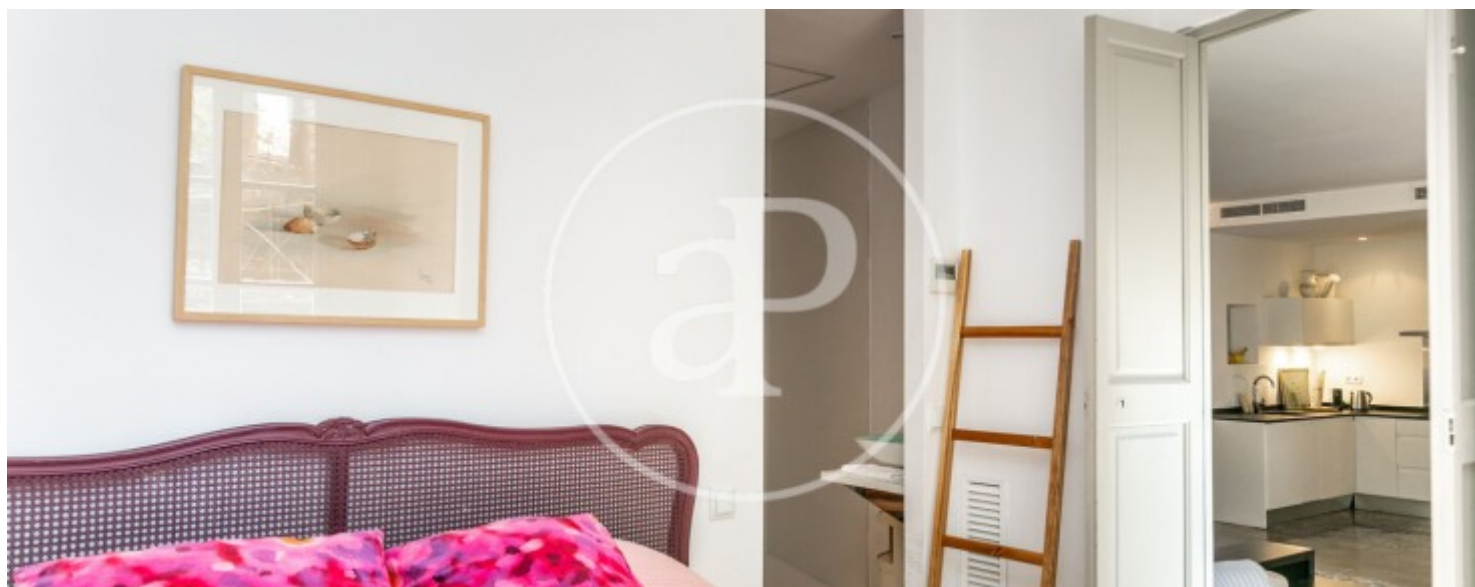
Sa Calatrava, Palma de Mallorca

REF. APMS2508007



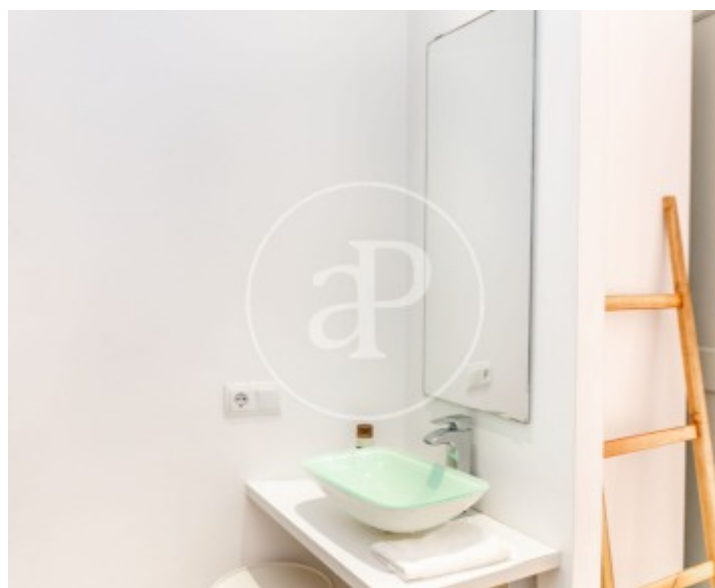
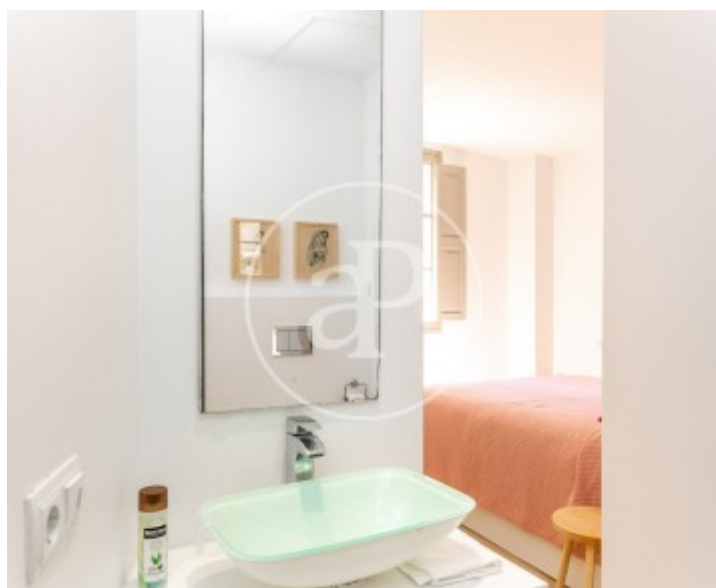
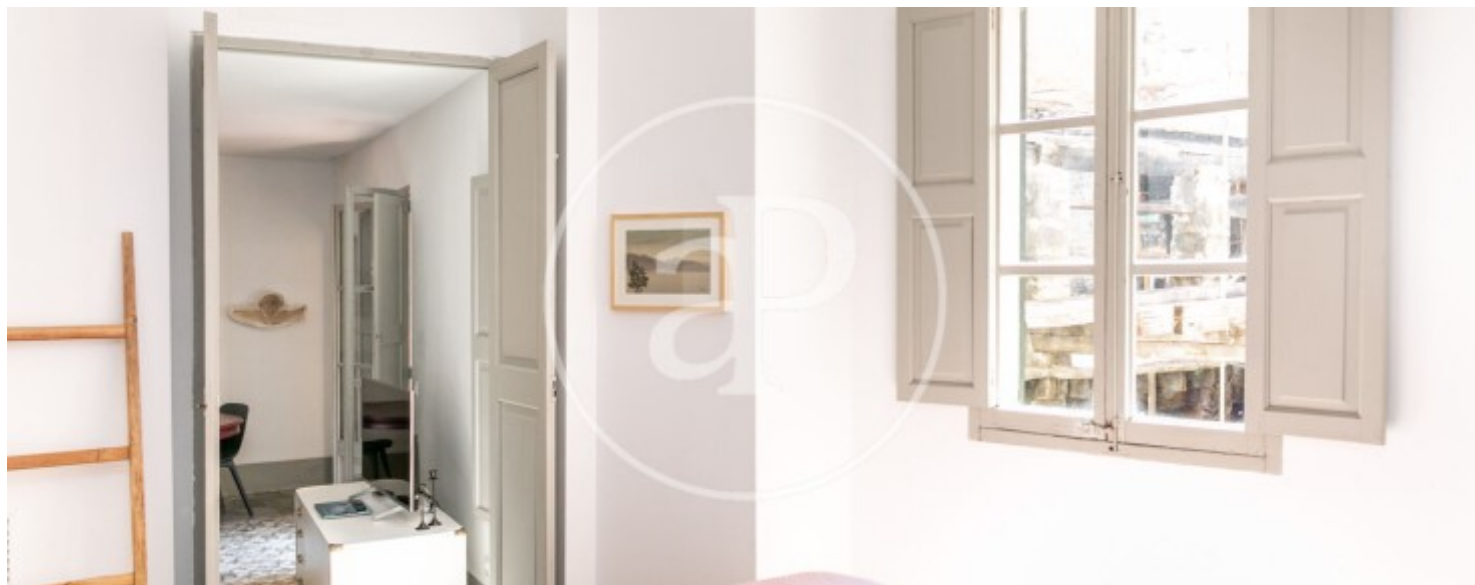
Sa Calatrava, Palma de Mallorca

REF. APMS2508007



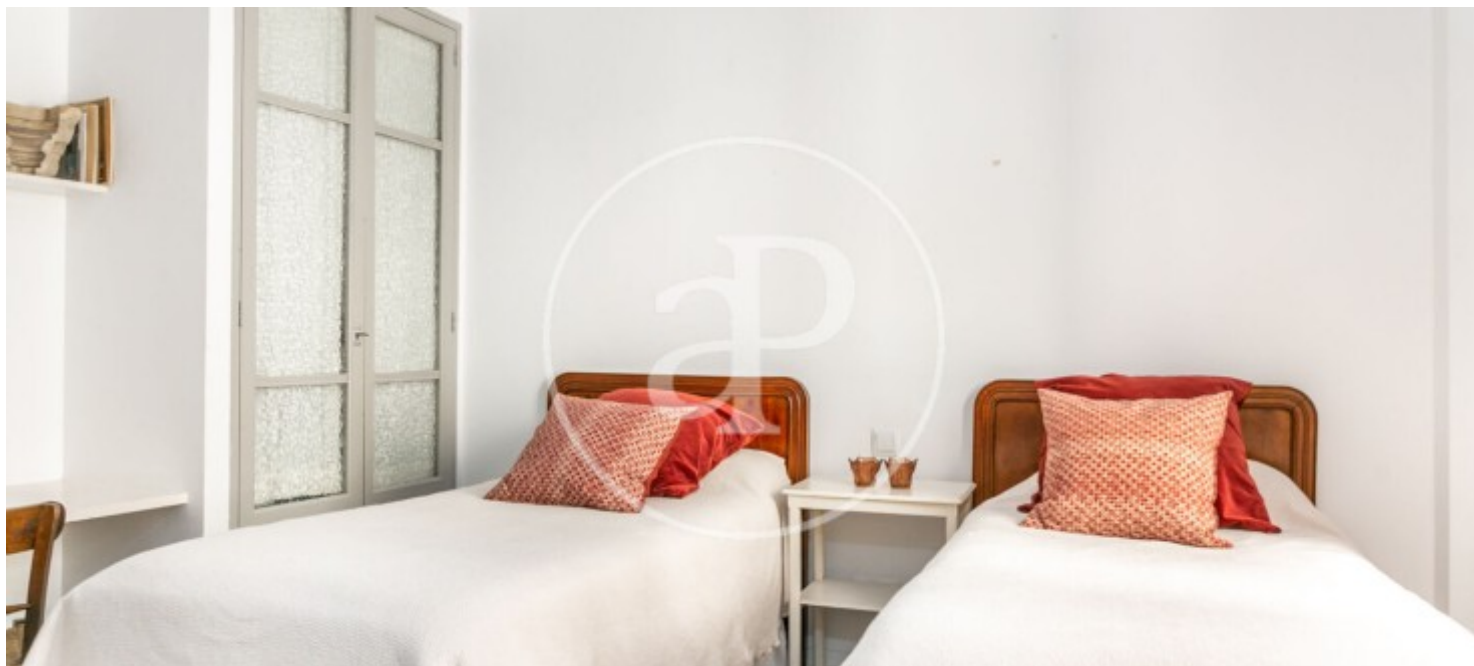
Sa Calatrava, Palma de Mallorca

REF. APMS2508007



Sa Calatrava, Palma de Mallorca

REF. APMS2508007



The information about any property is not binding to any offer or contract. Any verbal or written declaration made by aProperties with regards to the value or condition of the property should not be considered accurate or factual. The pictures make reference to some parts of the property at the times that they were taken. The areas, dimensions and distances that are given are approximate and should be checked by the client. The images are computer generated and are just an approximate indication of the real appearance of the property; these may change at any time. The information with regards to the property may also change at any time.

For **more information** or
to make an appointment

apropertiespalma@aproperties.es
Tel: 871 16 01 60
www.aproperties.es