

Sa Calatrava, Palma de Mallorca

REF. APMS2402008

Apartment for rent in Calatrava

Features

- ✓ Views
- ✓ Heating
- ✓ Furnished
- ✓ AACC

Surface

65 m²

Bedrooms

2

Bathroom

1

Price

2,000 €



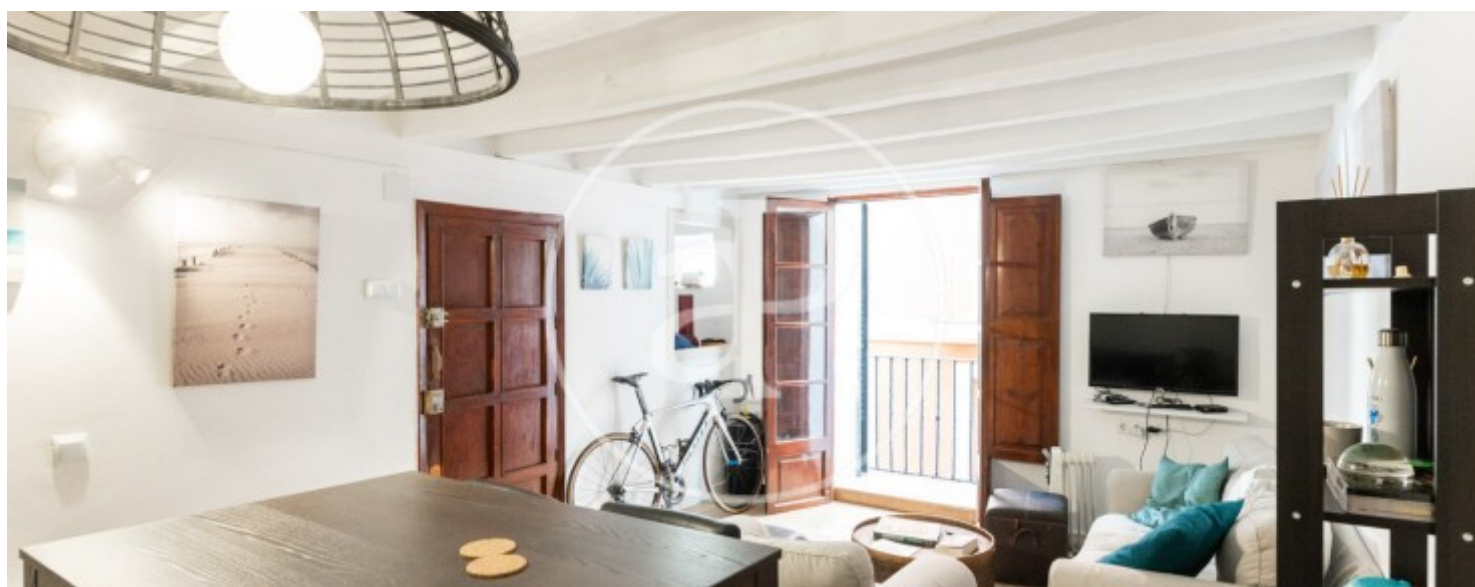
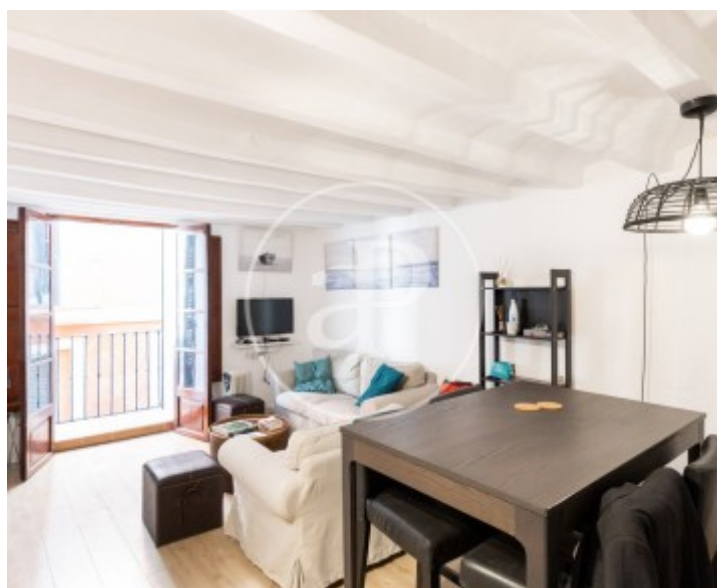
AVAILABLE DURING THE MONTHS OF JULY, AUGUST AND SEPTEMBER.

It is a apartment located in the middle of the old town of Palma, in the neighbourhood of Sa Calatrava. It is a building dating back to the early 1900's, with a lot of character. It has 65 sqm and has a living room with access to a balcony, a renovated kitchen, fully equipped, with new appliances. The house has two bedrooms and a bathroom. It is a unique opportunity to live in one of the most sought-after areas of the city, with shops, bars and restaurants all around, combined with the typical tranquillity and beauty of the place. Can you imagine living here? We are waiting for your call!

Contact us,
we will be happy to assist you,
to offer you more details and information.

Sa Calatrava, Palma de Mallorca

REF. APMS2402008



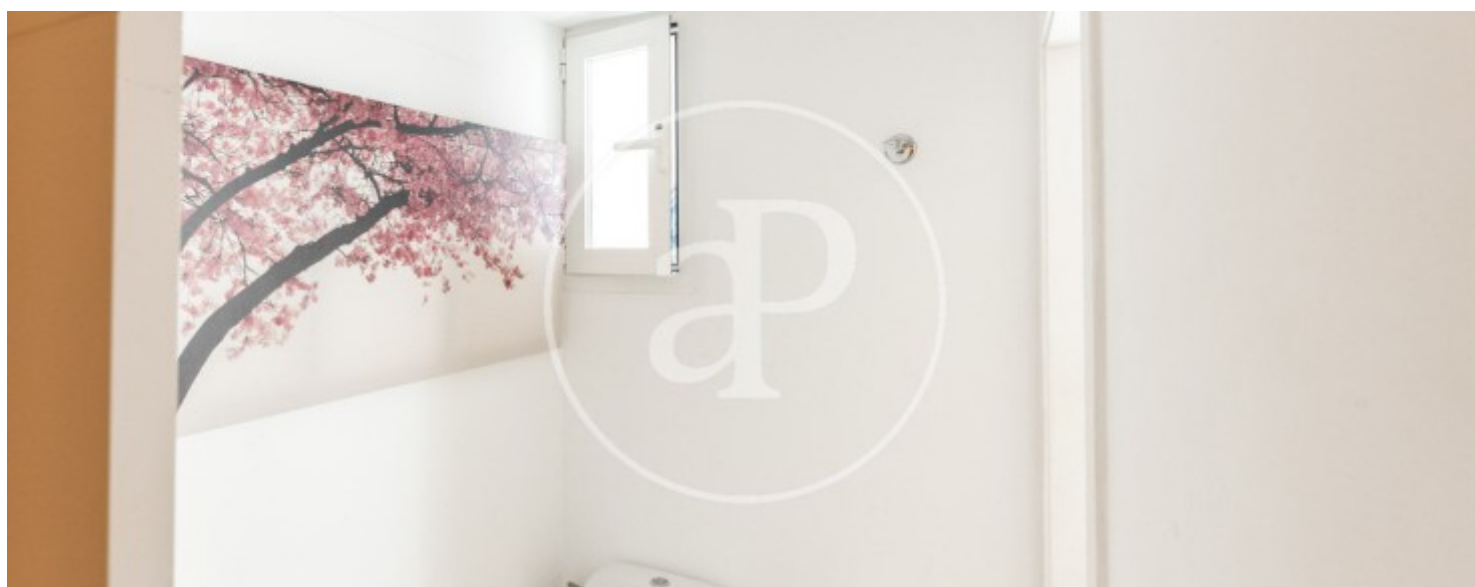
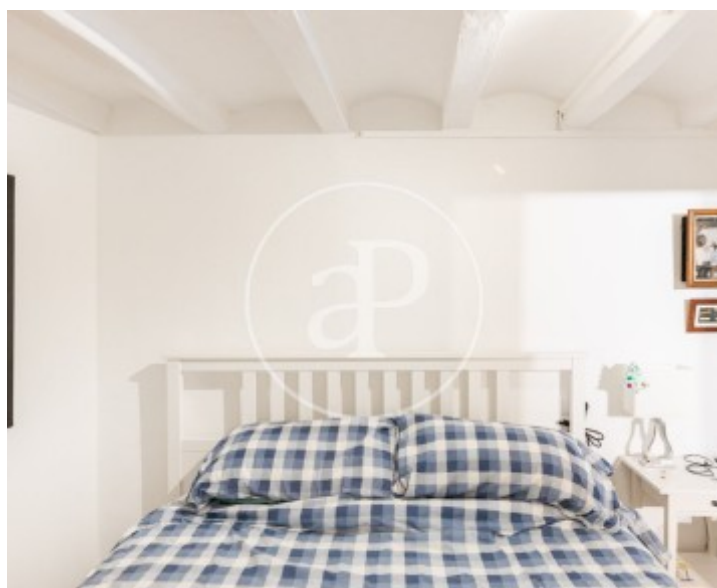
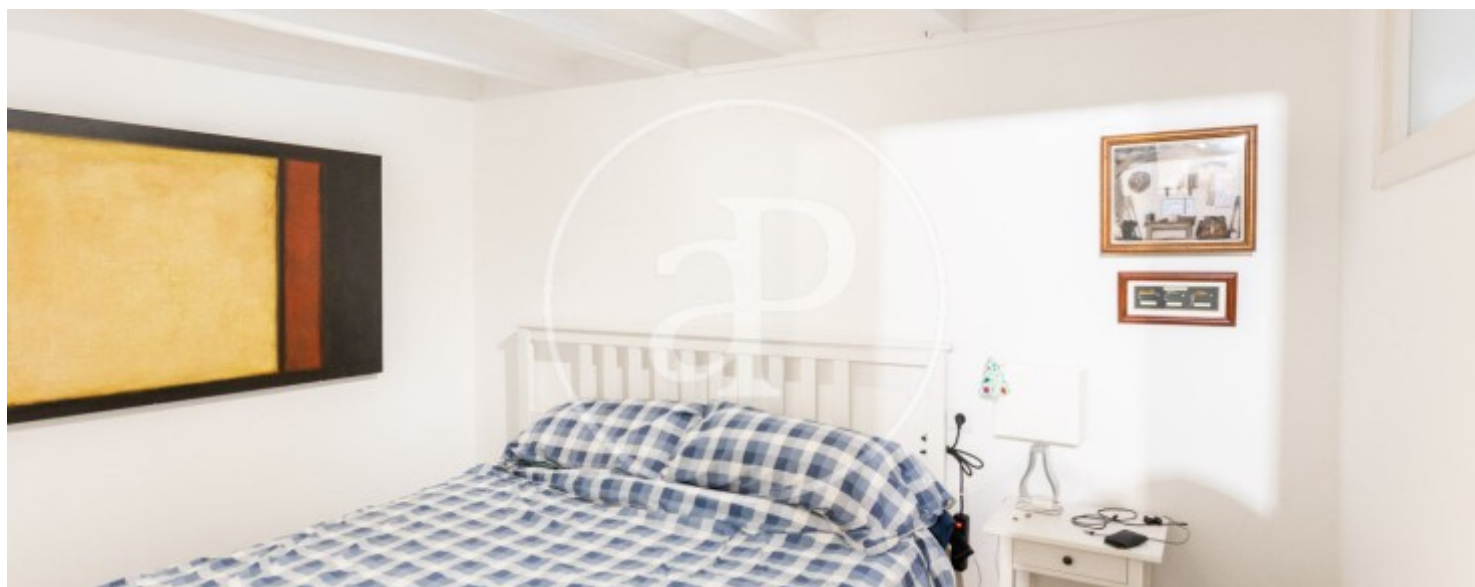
Sa Calatrava, Palma de Mallorca

REF. APMS2402008



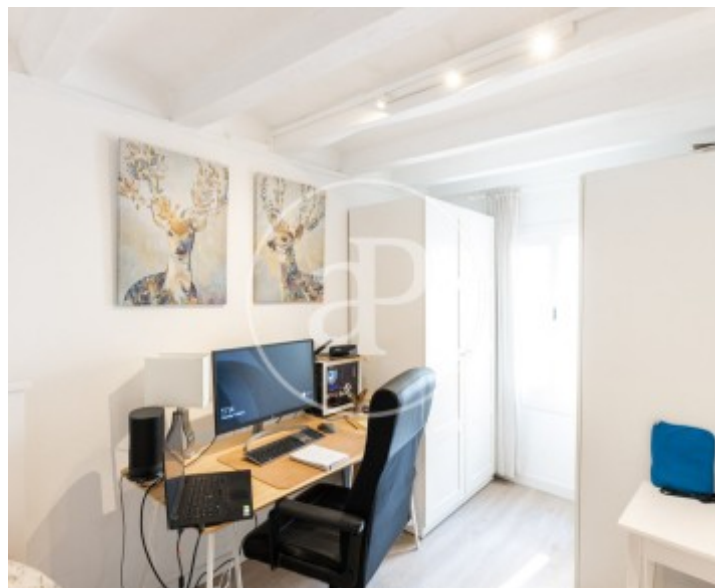
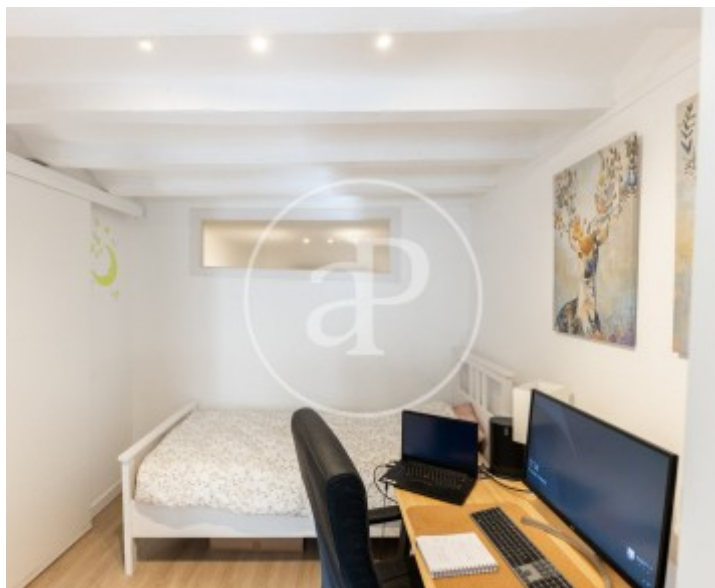
Sa Calatrava, Palma de Mallorca

REF. APMS2402008



Sa Calatrava, Palma de Mallorca

REF. APMS2402008



The information about any property is not binding to any offer or contract. Any verbal or written declaration made by aProperties with regards to the value or condition of the property should not be considered accurate or factual. The pictures make reference to some parts of the property at the times that they were taken. The areas, dimensions and distances that are given are approximate and should be checked by the client. The images are computer generated and are just an approximate indication of the real appearance of the property; these may change at any time. The information with regards to the property may also change at any time.

For **more information** or
to make an appointment

apropertiespalma@aproperties.es
Tel: 871 16 01 60
www.aproperties.es