



Sa Calatrava, Palma de Mallorca

REF. VPM2211035

Mallorcan courtyard house for sale in La Calatrava to renovate

Features

- ✓ Views
- ✓ Terrace
- ✓ Boxroom
- ✓ Backyard

Surface

621 m²

Bedrooms

15

Bathrooms

6

Price

3,430,000 €



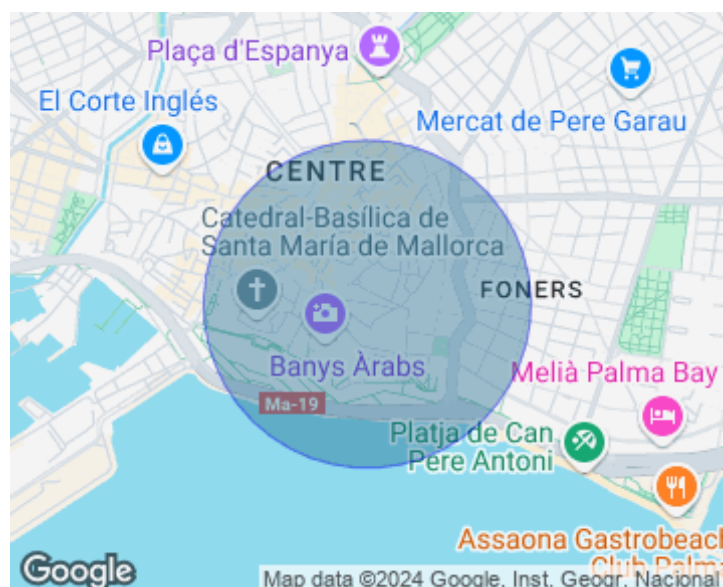
In the historic centre of La Calatrava, located near the main door of the "Call Major", the crossroads among the main streets of La Judería, between Monti-Sión and Calle Sol, is located this old Medieval building from the 14th century, used by merchants and later resided by the nobility of Palma. This manor house of Gothic origin with a typical Majorcan patio is located in a privileged location in the historic centre, in one of the most emblematic and prestigious areas of Palma. It has a constructed area of 658 sqm plus a central patio of approx. 50 sqm. It consists of three floors plus semi-basement, ground floor for carriages, main floor, penthouse floor plus an open terrace of approx. 20 sqm with panoramic views of the bell towers of the churches in the old town. The building

conserves original elements such as a Mudejar coffered ceiling, old beams and doors, windows and arches, as well as a cistern and its own well. The Technical Building Inspection has been carried out and approved and both the structure and the attic floor have been recently renovated. The catalogue of protection of buildings and elements of historical and artistic interest classifies the building as gothic. Ideal for investors to convert it into a luxury manor house or separate flats, there are endless possibilities and options. All its ancestral charm, privileged location...

Contact us,
we will be happy to assist you,
to offer you more details and information.

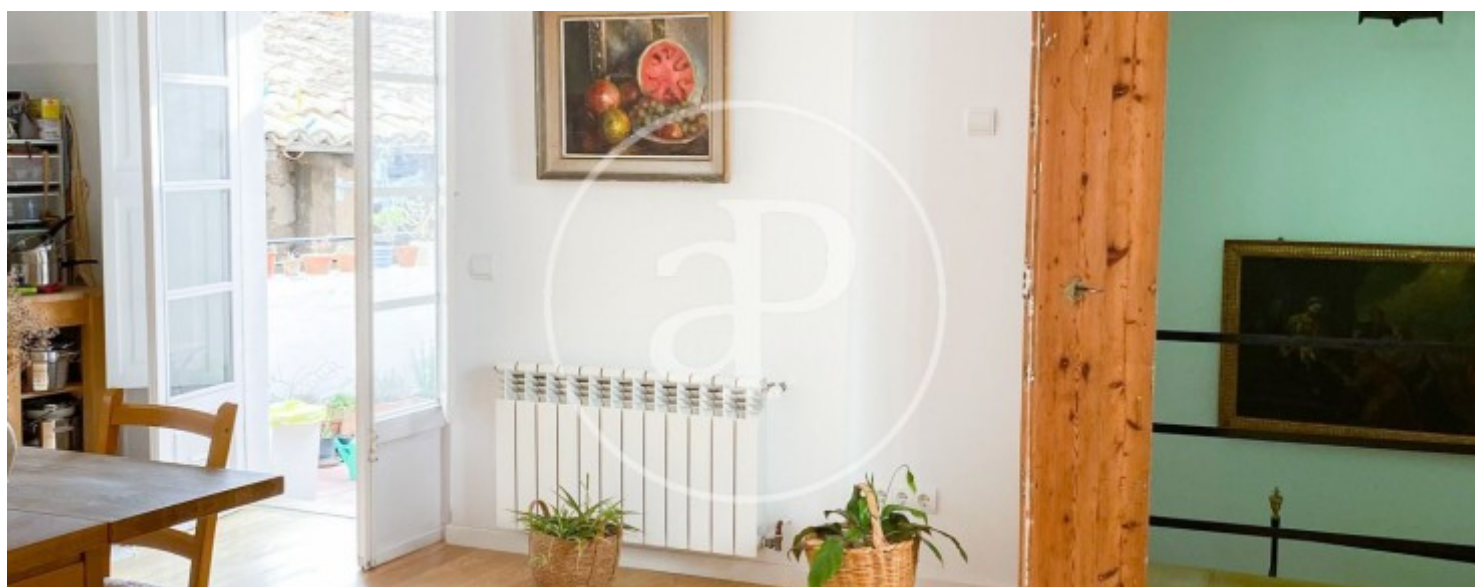
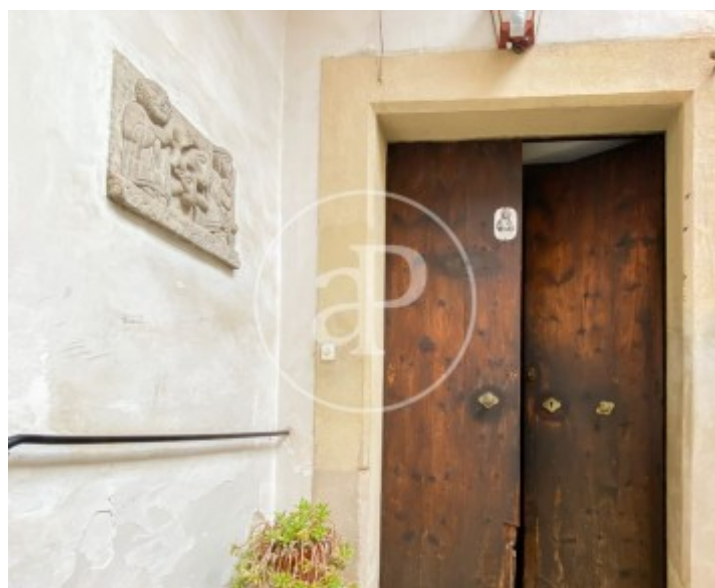
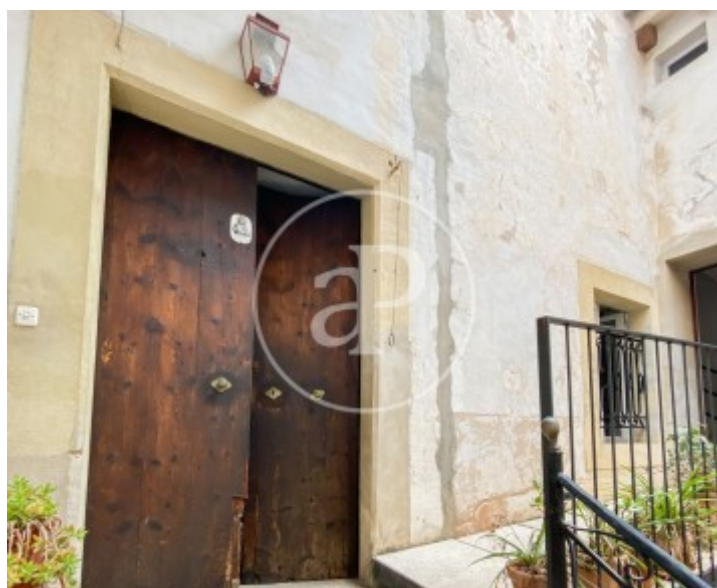
Sa Calatrava, Palma de Mallorca

REF. VPM2211035



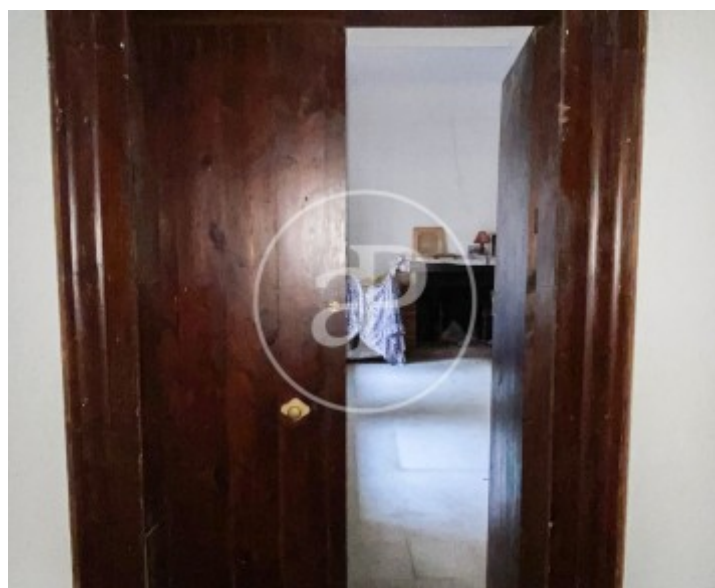
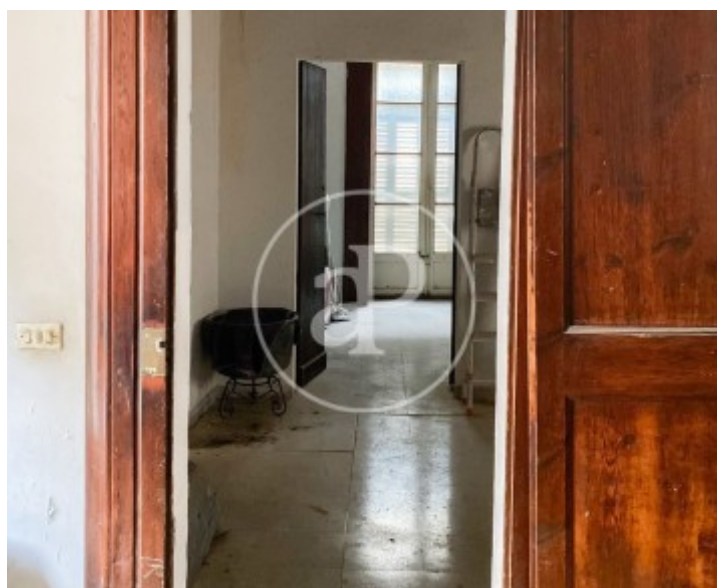
Sa Calatrava, Palma de Mallorca

REF. VPM2211035



Sa Calatrava, Palma de Mallorca

REF. VPM2211035



Sa Calatrava, Palma de Mallorca

REF. VPM2211035



The information about any property is not binding to any offer or contract. Any verbal or written declaration made by aProperties with regards to the value or condition of the property should not be considered accurate or factual. The pictures make reference to some parts of the property at the times that they were taken. The areas, dimensions and distances that are given are approximate and should be checked by the client. The images are computer generated and are just an approximate indication of the real appearance of the property; these may change at any time. The information with regards to the property may also change at any time.

For **more information** or
to make an appointment

apropertiespalma@aproperties.es
Tel: 871 16 01 60
www.aproperties.es