

Sa Calatrava, Palma de Mallorca

REF. VPM2602019

Apartment for sale in Palma

Features

Surface

60 m²

Bedroom

1

Bathroom

1

✓ AACC

Price

349,000 €



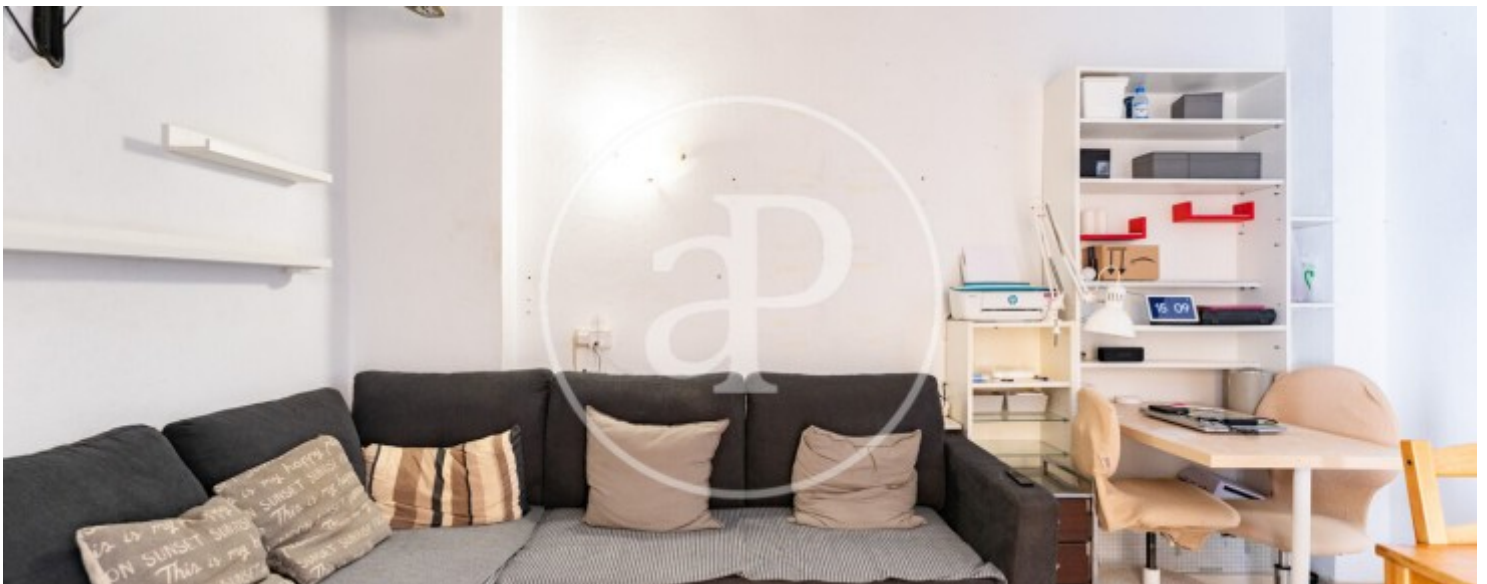
Distinguished first-floor apartment with character and independent rooms in Es Fortí. Located in the well-established neighborhood of Es Fortí, in Palma de Mallorca, this elegant 60 m² apartment combines character, functionality, and a particularly comfortable layout. Set on a first floor—a valuable feature in character buildings—it offers easy access without sacrificing architectural charm. Comfortable and well-defined layout: Unlike studio-style properties, this apartment features a separate bedroom, independent kitchen, and a full bathroom, providing greater privacy and a more efficient organization of space. The separation of rooms enhances both daily comfort and versatility of use. Natural light and outdoor connection: Both the living room and the bedroom have

their own traditional balconies facing the street, ensuring excellent natural light and cross ventilation, while adding that highly sought-after Mediterranean character. Optimized space: The bedroom includes a built-in wardrobe, maximizing storage capacity while maintaining a clean, functional aesthetic. Surroundings and amenities: Es Fortí is a consolidated residential area, appreciated for its proximity to the city center and for offering all essential services within walking distance: shops, schools, public transport, and green areas. A strategic location that allows you to enjoy...

Contact us,
we will be happy to assist you,
to offer you more details and information.

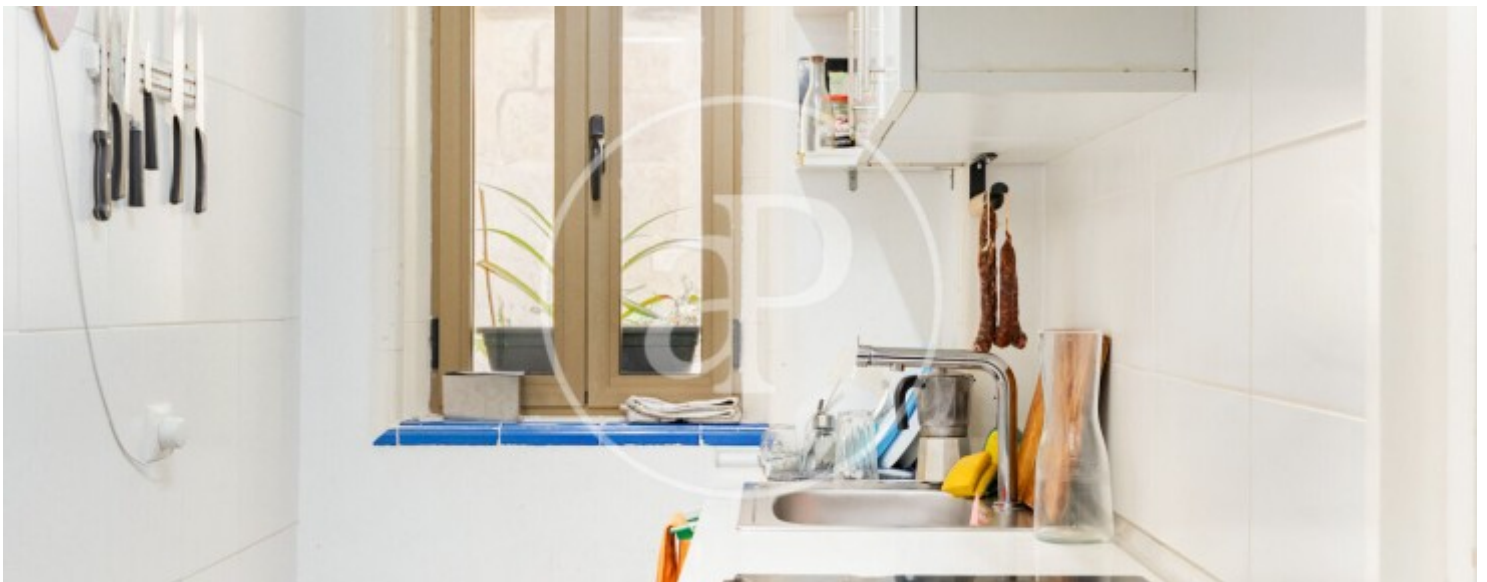
Sa Calatrava, Palma de Mallorca

REF. VPM2602019



Sa Calatrava, Palma de Mallorca

REF. VPM2602019



Sa Calatrava, Palma de Mallorca

REF. VPM2602019



Sa Calatrava, Palma de Mallorca

REF. VPM2602019



The information about any property is not binding to any offer or contract. Any verbal or written declaration made by aProperties with regards to the value or condition of the property should not be considered accurate or factual. The pictures make reference to some parts of the property at the times that they were taken. The areas, dimensions and distances that are given are approximate and should be checked by the client. The images are computer generated and are just an approximate indication of the real appearance of the property; these may change at any time. The information with regards to the property may also change at any time.

For **more information** or
to make an appointment

apropertiespalma@aproperties.es
Tel: 871 16 01 60
www.aproperties.es