

Sa Calatrava, Palma de Mallorca

REF. VPM2605026

Studio for sale in Palma's Old Town

Features

- ✓ Heating
- ✓ AACC
- ✓ Furnished

Price
365,000 €

Surface

34 m²

Bedroom

1

Bathroom

1



This exclusive studio for sale is located in the Calatrava area, one of the most sought-after enclaves in Palma de Mallorca's Old Town.

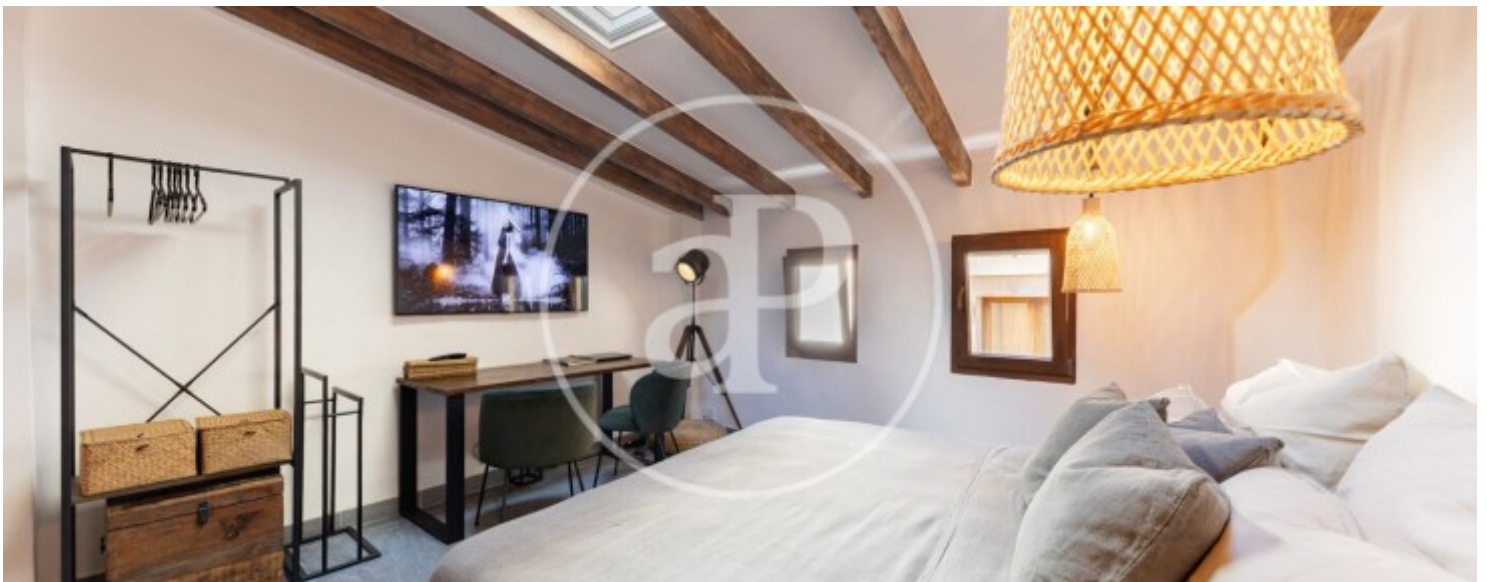
A unique property that blends traditional Mallorcan architectural essence with contemporary interior design featuring clean lines, perfect as a second residence, investment opportunity or elegant urban retreat. Situated in the heart of Palma's historic centre, the studio is just a few minutes from the Cathedral, Parc de la Mar, the seafront promenade, the beach and the Town Hall. Its strategic location allows you to enjoy a vibrant and charming setting surrounded by cobbled streets, art galleries, exclusive boutiques,

characterful cafés and an outstanding gastronomic scene. The property is located on the second floor of a historic building dating back to 1900, without lift access, meticulously maintained and consisting of only three neighbours, providing privacy and a peaceful atmosphere. The apartment has recently undergone a complete renovation carried out with high-quality materials and a design carefully conceived to optimise every square metre. The main open-plan space stands out for its brightness and a layout designed to maximise spaciousness and comfort. Features include wooden carpentry...

Contact us,
we will be happy to assist you,
to offer you more details and information.

Sa Calatrava, Palma de Mallorca

REF. VPM2605026



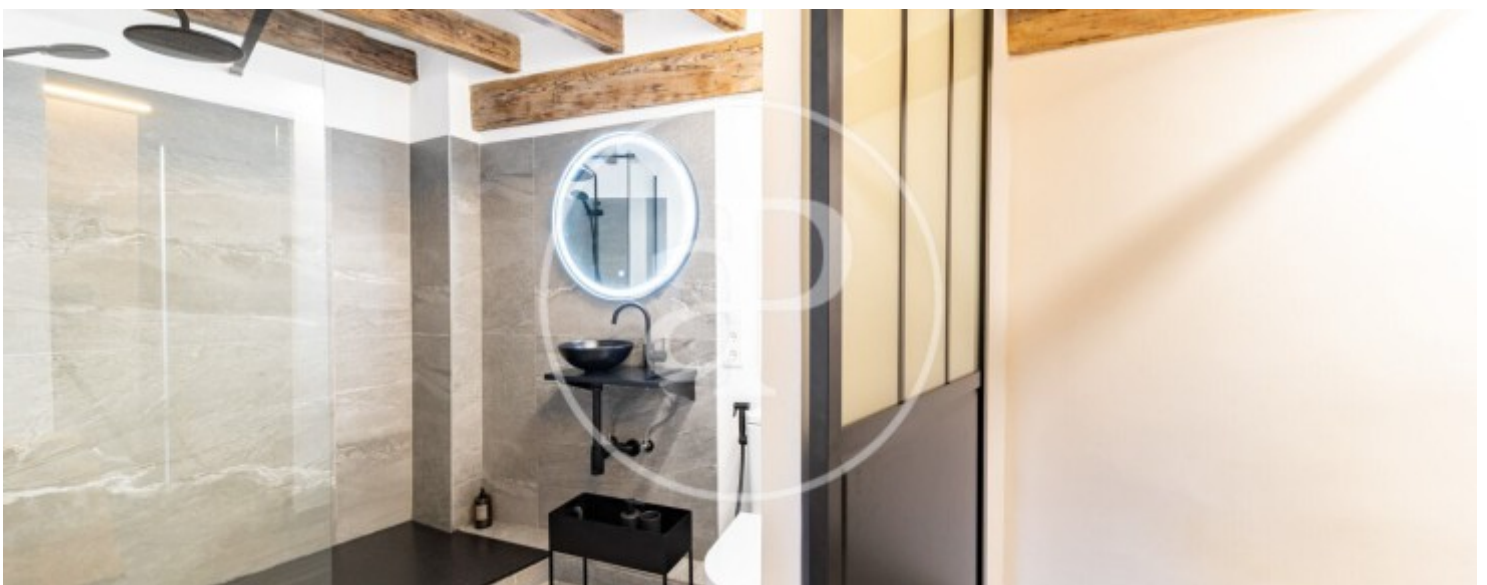
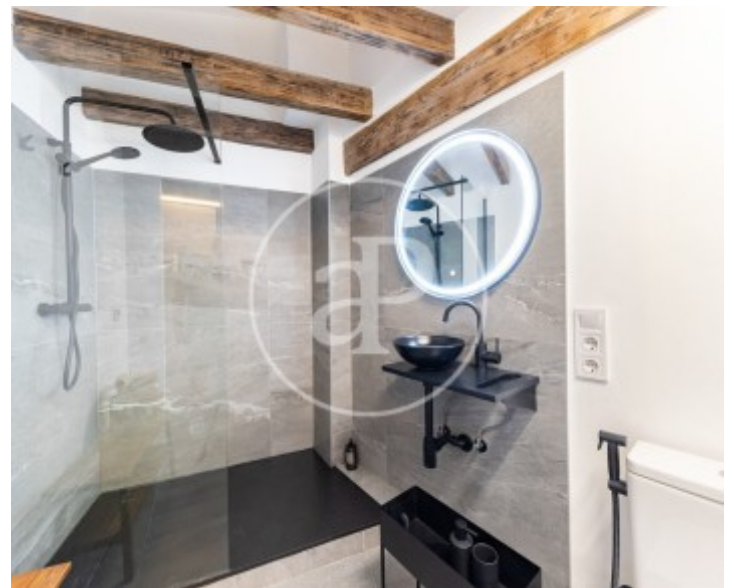
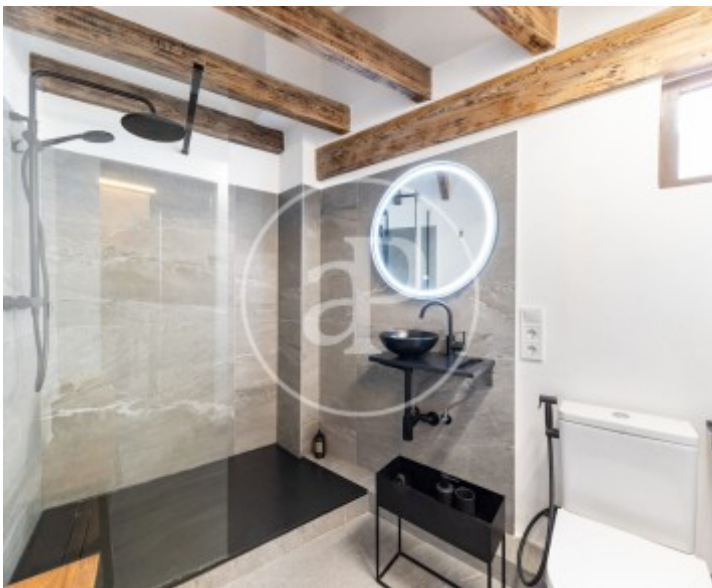
Sa Calatrava, Palma de Mallorca

REF. VPM2605026



Sa Calatrava, Palma de Mallorca

REF. VPM2605026



Sa Calatrava, Palma de Mallorca

REF. VPM2605026



The information about any property is not binding to any offer or contract. Any verbal or written declaration made by aProperties with regards to the value or condition of the property should not be considered accurate or factual. The pictures make reference to some parts of the property at the times that they were taken. The areas, dimensions and distances that are given are approximate and should be checked by the client. The images are computer generated and are just an approximate indication of the real appearance of the property; these may change at any time. The information with regards to the property may also change at any time.

For **more information** or
to make an appointment

apropertiespalma@aproperties.es
Tel: 871 16 01 60
www.aproperties.es