

Sa Calatrava, Palma de Mallorca

REF. VPM2412002

# House for sale in La Calatrava

## Features

- ✓ Views
- ✓ Heating
- ✓ Furnished
- ✓ Boxroom
- ✓ AACC
- ✓ Terrace
- ✓ Lift
- ✓ Has parking

Price

**2,370,000 €**

Surface

**283 m<sup>2</sup>**

Bedrooms

**4**

Bathrooms

**3**



**Immerse yourself in history with this impressive house located in the heart of the old town, in the charming area of 'Sa Calatrava'.**

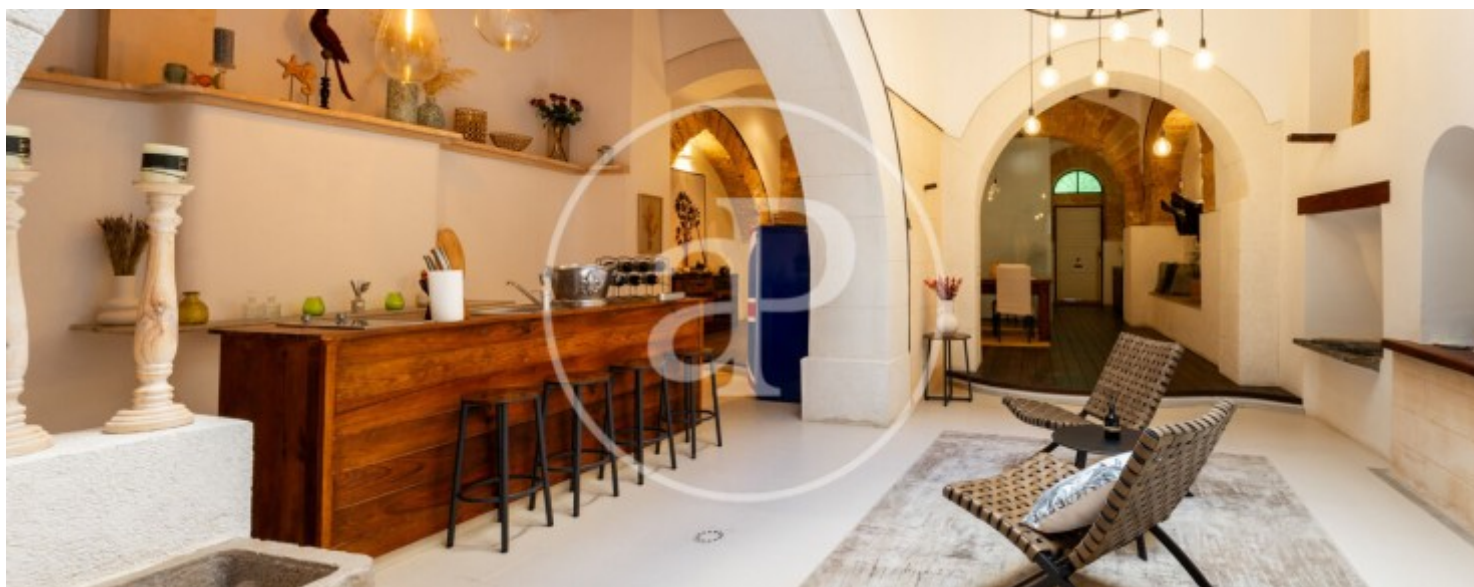
Meticulously restored, this architectural gem perfectly combines its historical character with all modern comforts. The four-storey building preserves unique details such as marés arches, exposed beams, an ancient cistern and stables, which enhance its authenticity and charm. High ceilings and luxurious finishes bring a timeless elegance to every corner. On the ground floor, you will find a spacious entrance hall, a living room with a central table, a modern kitchen with island, a bedroom, a terrace and a practical

parking space. The upper floors offer a functional layout with three additional bedrooms, each with en-suite bathrooms and access to private terraces, along with living areas and a second kitchen. Outstanding features: Natural wood floors combined with micro-cement. Natural stone bathrooms and luxury finishes. Hot and cold air conditioning and underfloor heating for maximum comfort. Double glazing and acoustic insulation. Ambient lighting that highlights its unique design. Situated in the picturesque narrow streets of the old town, this property offers a historic setting with close access...

**Contact us,**  
we will be happy to assist you,  
to offer you more details and information.

Sa Calatrava, Palma de Mallorca

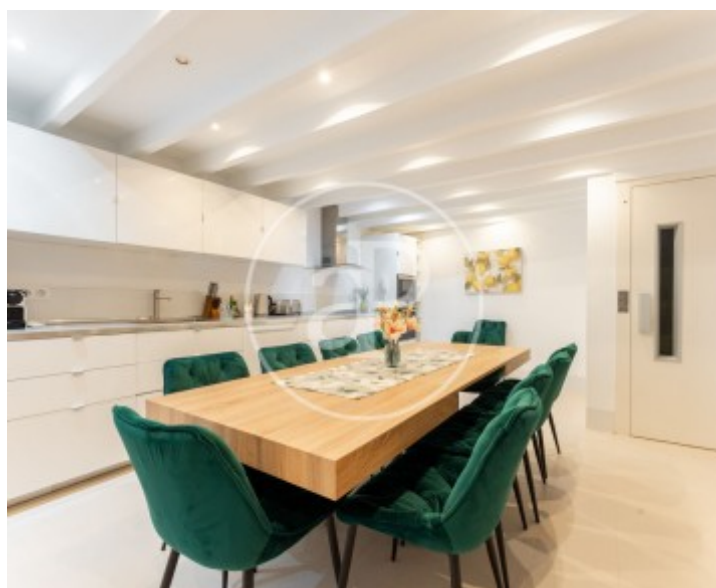
REF. VPM2412002





Sa Calatrava, Palma de Mallorca

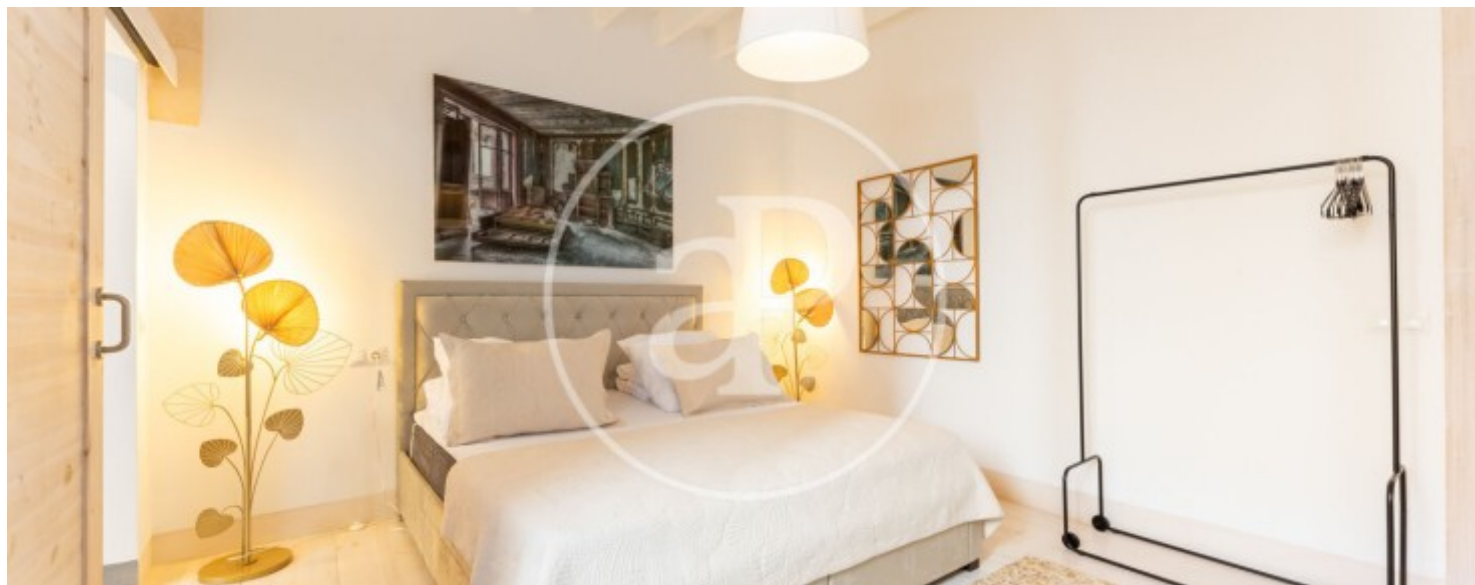
REF. VPM2412002





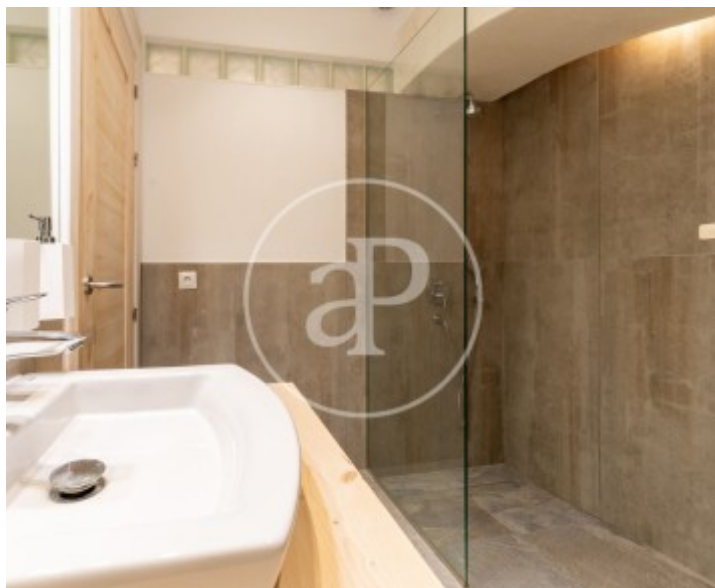
Sa Calatrava, Palma de Mallorca

REF. VPM2412002



Sa Calatrava, Palma de Mallorca

REF. VPM2412002



The information about any property is not binding to any offer or contract. Any verbal or written declaration made by aProperties with regards to the value or condition of the property should not be considered accurate or factual. The pictures make reference to some parts of the property at the times that they were taken. The areas, dimensions and distances that are given are approximate and should be checked by the client. The images are computer generated and are just an approximate indication of the real appearance of the property; these may change at any time. The information with regards to the property may also change at any time.

For **more information** or  
to make an appointment

[apropertiespalma@aproperties.es](mailto:apropertiespalma@aproperties.es)  
Tel: 871 16 01 60  
[www.aproperties.es](http://www.aproperties.es)