

Sa Calatrava, Palma de Mallorca

REF. APM2606028

Luxury Apartment for Rent in Palma's Old Town

Features

- ✓ Views
- ✓ Heating
- ✓ Boxroom
- ✓ AACC
- ✓ Terrace
- ✓ Lift
- ✓ Has parking

Surface

213 m²

Bedrooms

2

Bathrooms

2



Price

4,900 €

Located in Sa Calatrava, one of Palma's most prestigious and historic neighbourhoods, this outstanding residence offers a unique combination of luxury, generous living spaces and an exceptional location.

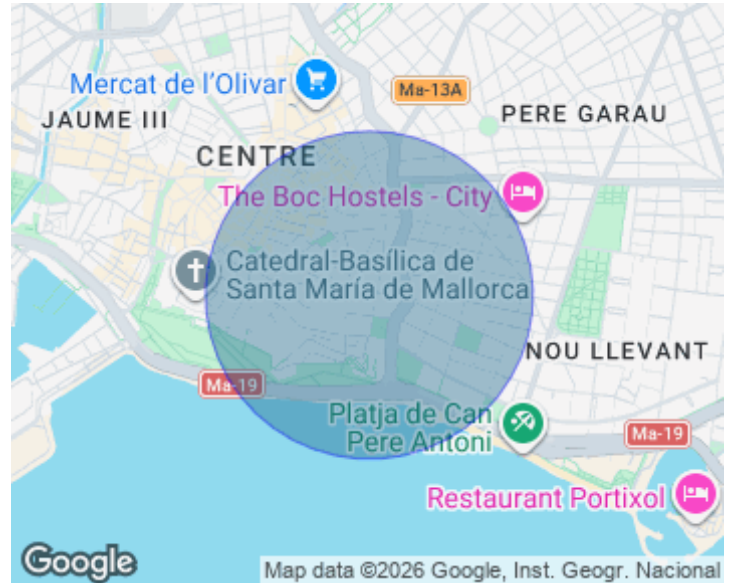
Overlooking the Mediterranean and surrounded by the charm of Palma's Old Town, it is the perfect home for those seeking an exclusive lifestyle in one of the city's most desirable areas. The property offers over 200 m² of beautifully designed living space, featuring spacious, light-filled interiors finished with premium materials and elegant details throughout. The impressive living and dining area is complemented by a contemporary designer kitchen with high-end

finishes. Both spaces enjoy wonderful sea views, creating a bright and sophisticated atmosphere. The apartment offers two spacious bedrooms and two full bathrooms, thoughtfully designed to ensure maximum comfort and privacy. On the upper level, a private terrace extends the living experience outdoors, providing the perfect setting to enjoy the Mediterranean climate and spectacular sea views. The property is offered partially furnished, allowing future tenants to personalise the interiors according to their own style. For added convenience, the apartment also includes a private parking space...

Contact us,
we will be happy to assist you,
to offer you more details and information.

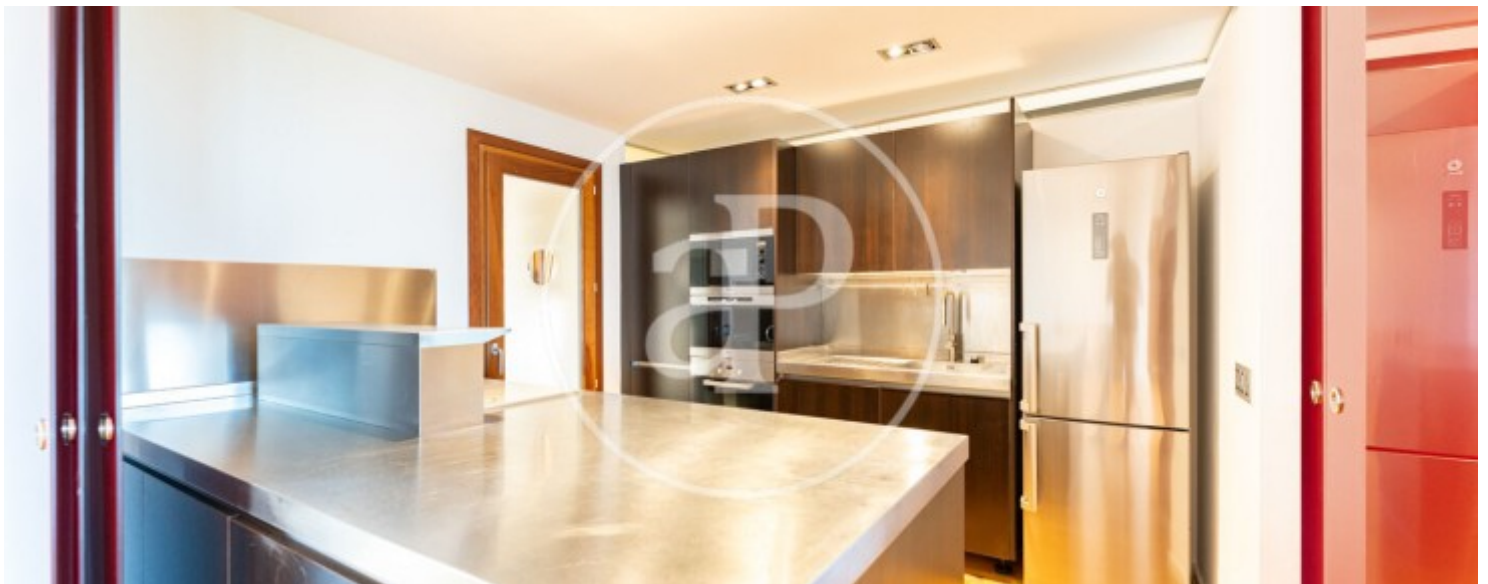
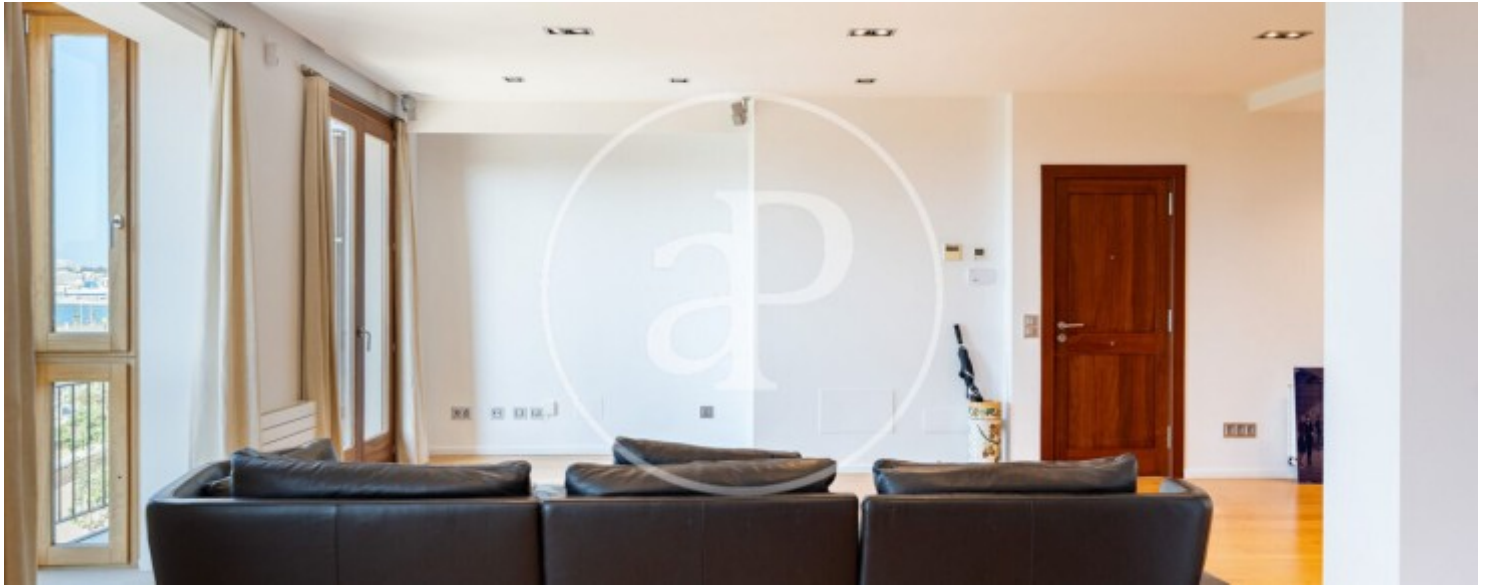
Sa Calatrava, Palma de Mallorca

REF. APM2606028



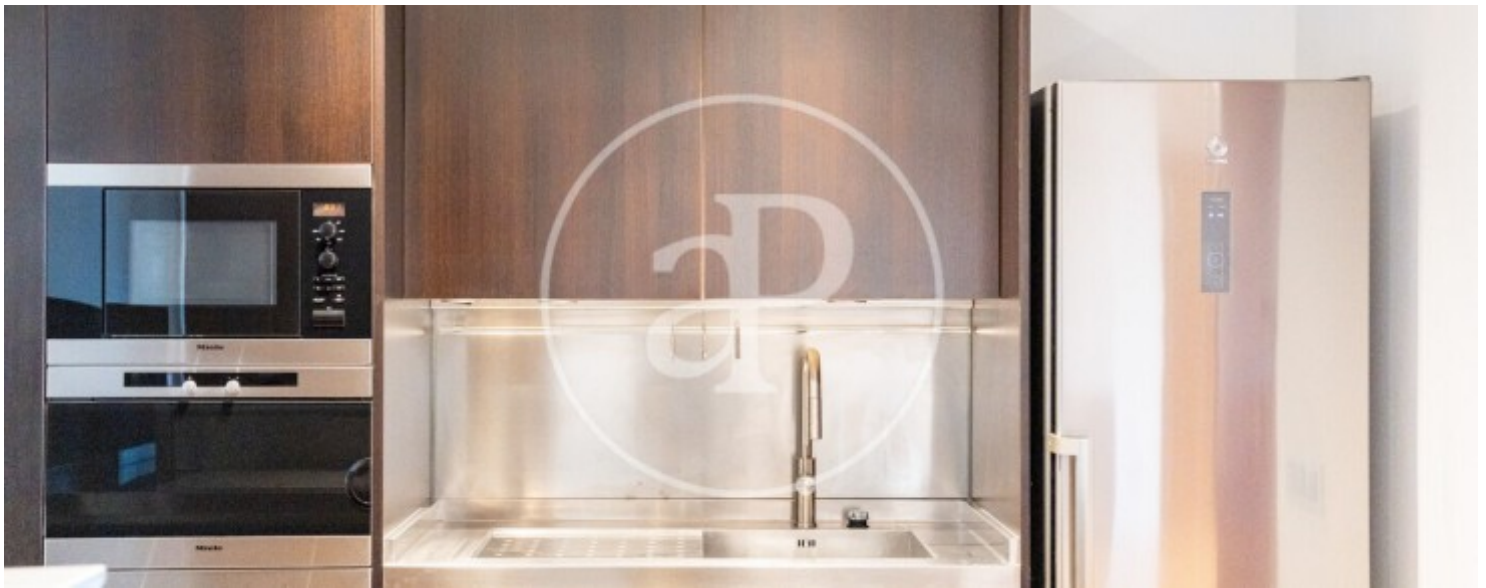
Sa Calatrava, Palma de Mallorca

REF. APM2606028



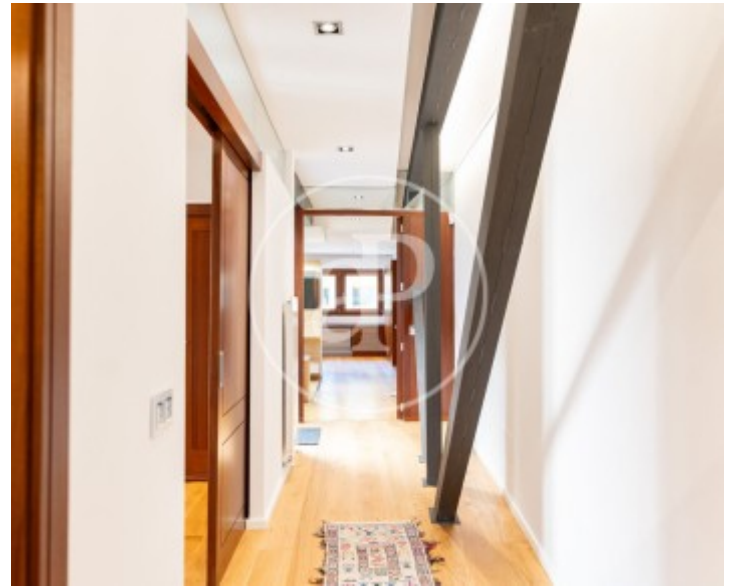
Sa Calatrava, Palma de Mallorca

REF. APM2606028



Sa Calatrava, Palma de Mallorca

REF. APM2606028



The information about any property is not binding to any offer or contract. Any verbal or written declaration made by aProperties with regards to the value or condition of the property should not be considered accurate or factual. The pictures make reference to some parts of the property at the times that they were taken. The areas, dimensions and distances that are given are approximate and should be checked by the client. The images are computer generated and are just an approximate indication of the real appearance of the property; these may change at any time. The information with regards to the property may also change at any time.

For **more information** or
to make an appointment

apropertiespalma@aproperties.es
Tel: 871 16 01 60
www.aproperties.es