

Sa Calatrava, Palma de Mallorca

REF. VPM2501005

Loft for sale in La Calatrava

Features

Surface

160 m²

Bedrooms

2

Bathrooms

2

✓ Terrace

✓ Lift

Price

1,490,000 €



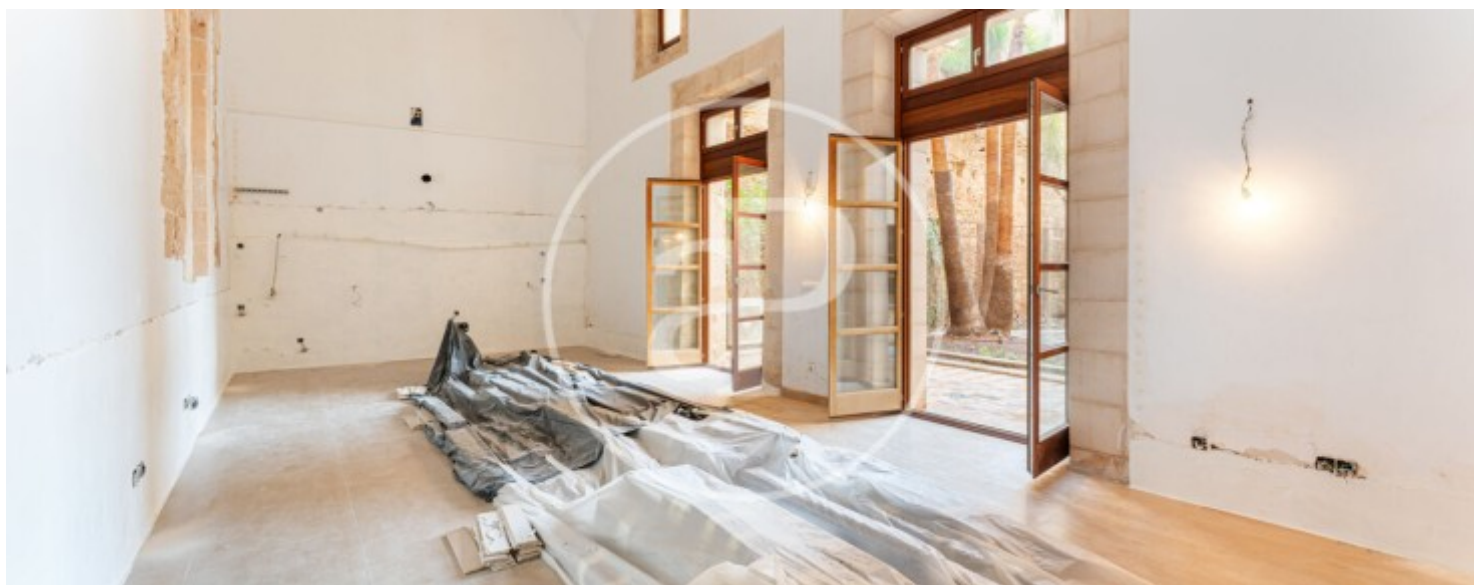
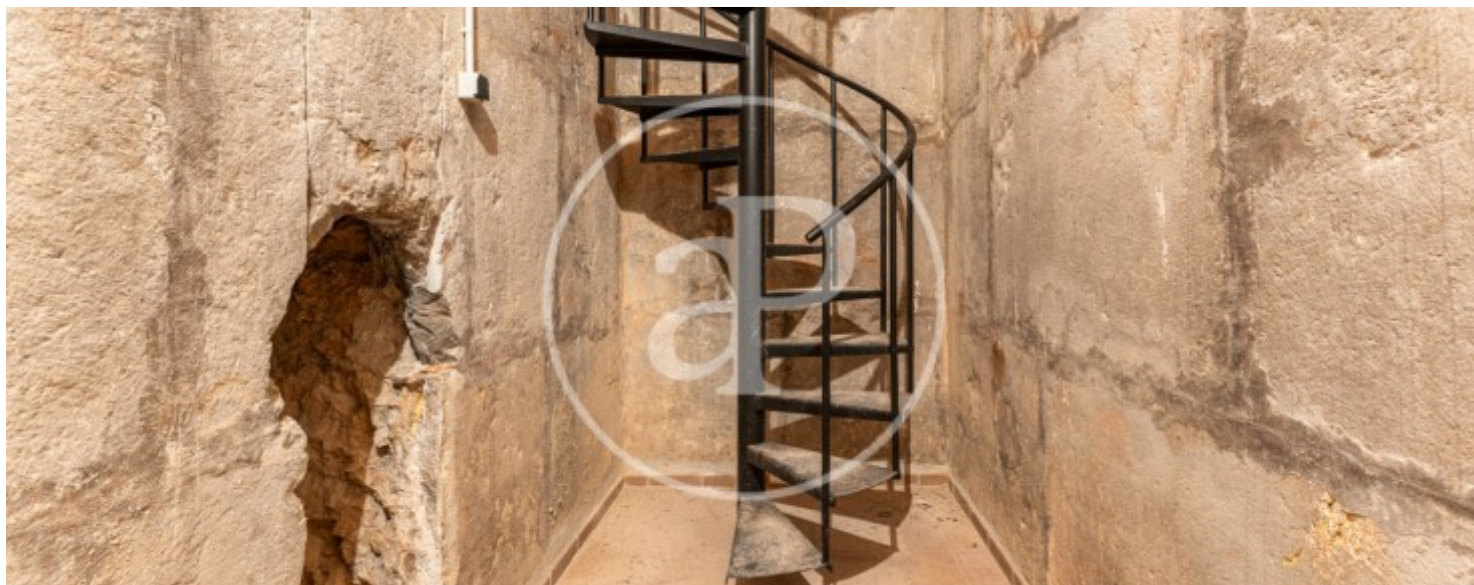
This spacious loft apartment of 160 sqm is located on the first floor of a renovated building with elevator in La Calatrava, a few steps from emblematic places such as Porta del Camp, next to the Hotel Príncep, within walking distance of the beach, the promenade and the Parc del Mar. Its excellent location offers an optimal connection to various means of transport. The house stands out for its brightness and open concept, thanks to the large windows. Upon entering, we access the day area, which has a guest toilet and a spacious living-dining room with 6 meters high, Gothic arches and a marés stone wall, with access to a landscaped courtyard of 20 sqm. There is currently no kitchen. The sleeping area consists of two en-suite bedrooms with fitted closets. A staircase leads to a multipurpose

open space, which could be used as a wine cellar or gym. Previously, it was a cistern. For greater comfort, the apartment has air conditioning ducts in all rooms, while the building has an elevator and two entrances. Can you imagine living here, we are waiting for your call!

Contact us,
we will be happy to assist you,
to offer you more details and information.

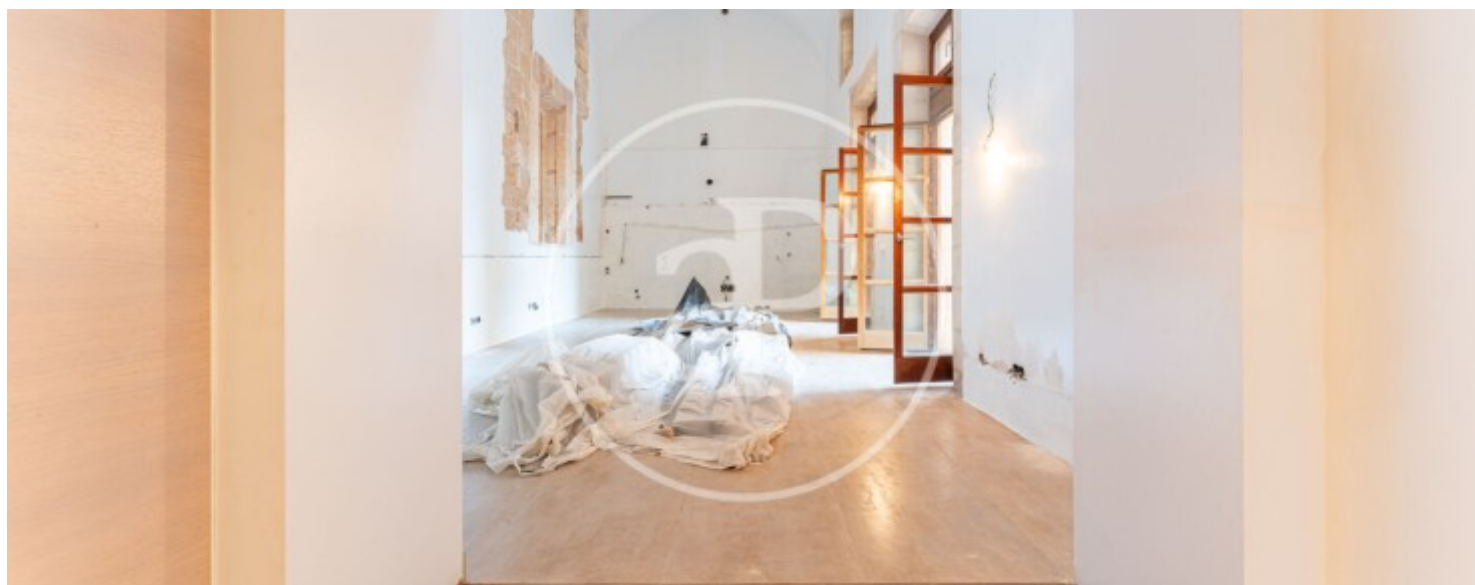
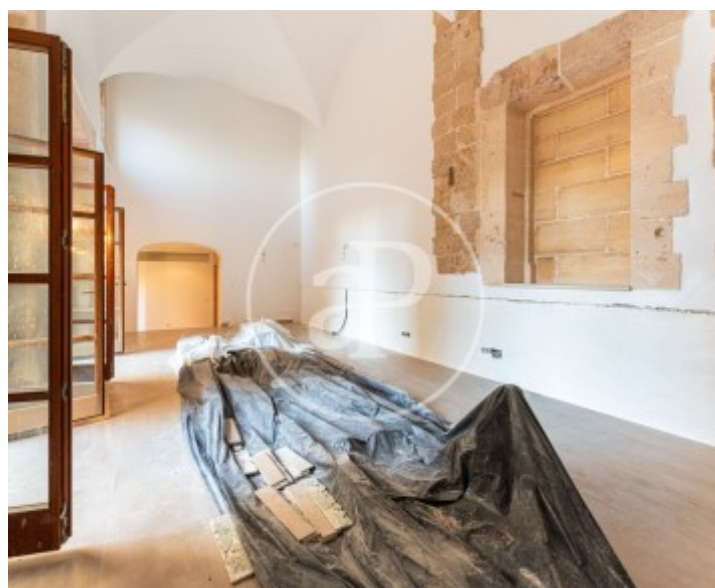
Sa Calatrava, Palma de Mallorca

REF. VPM2501005



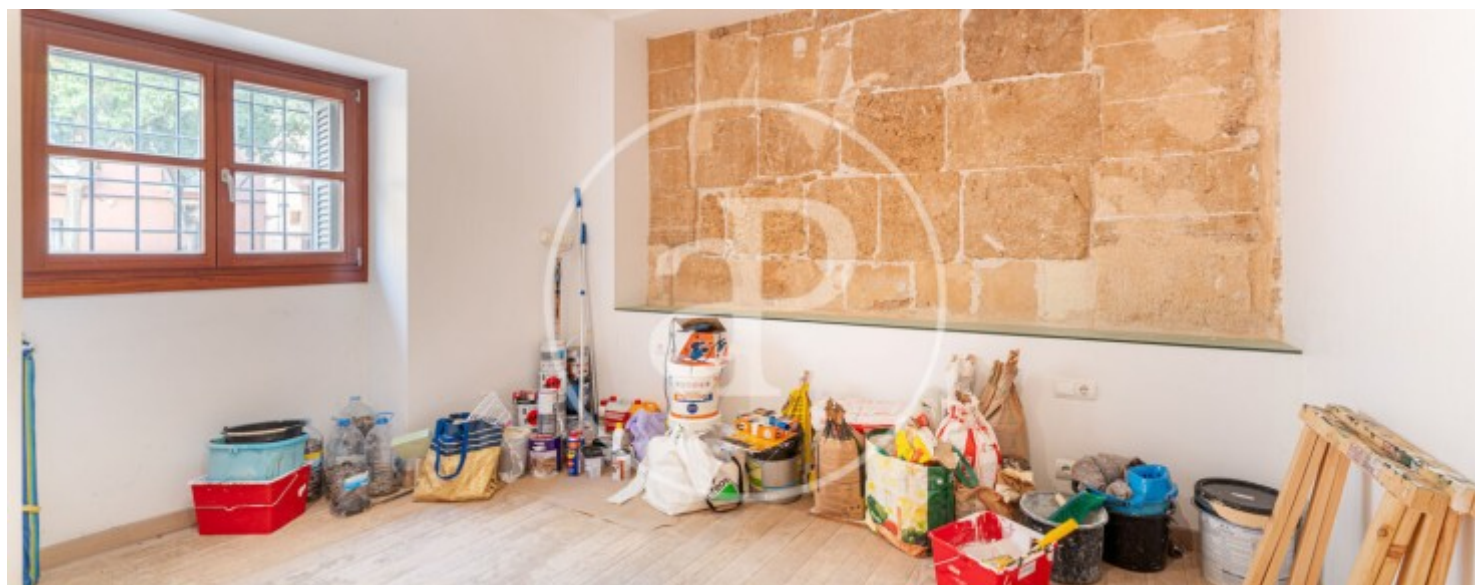
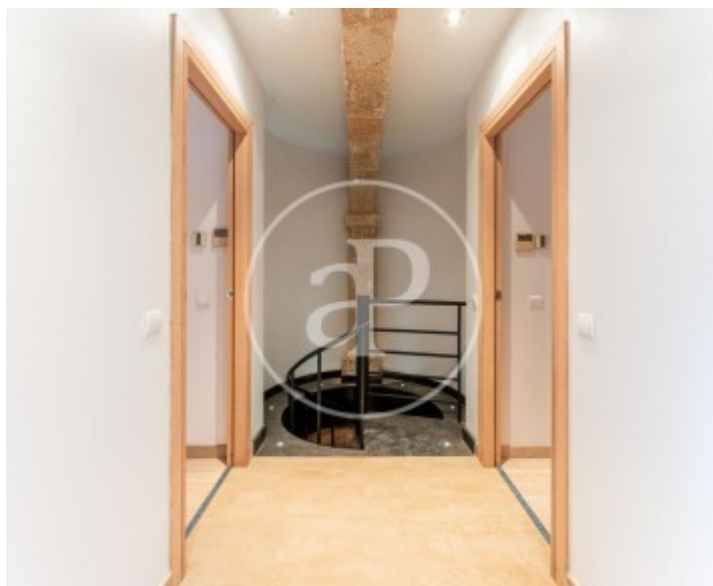
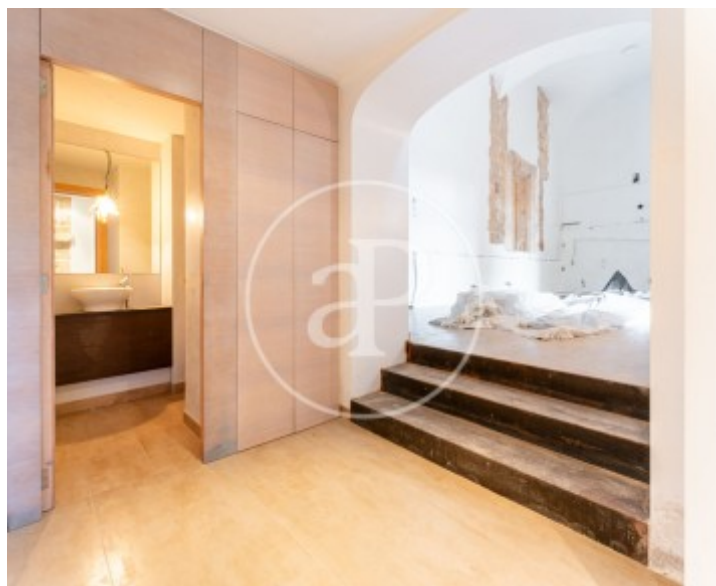
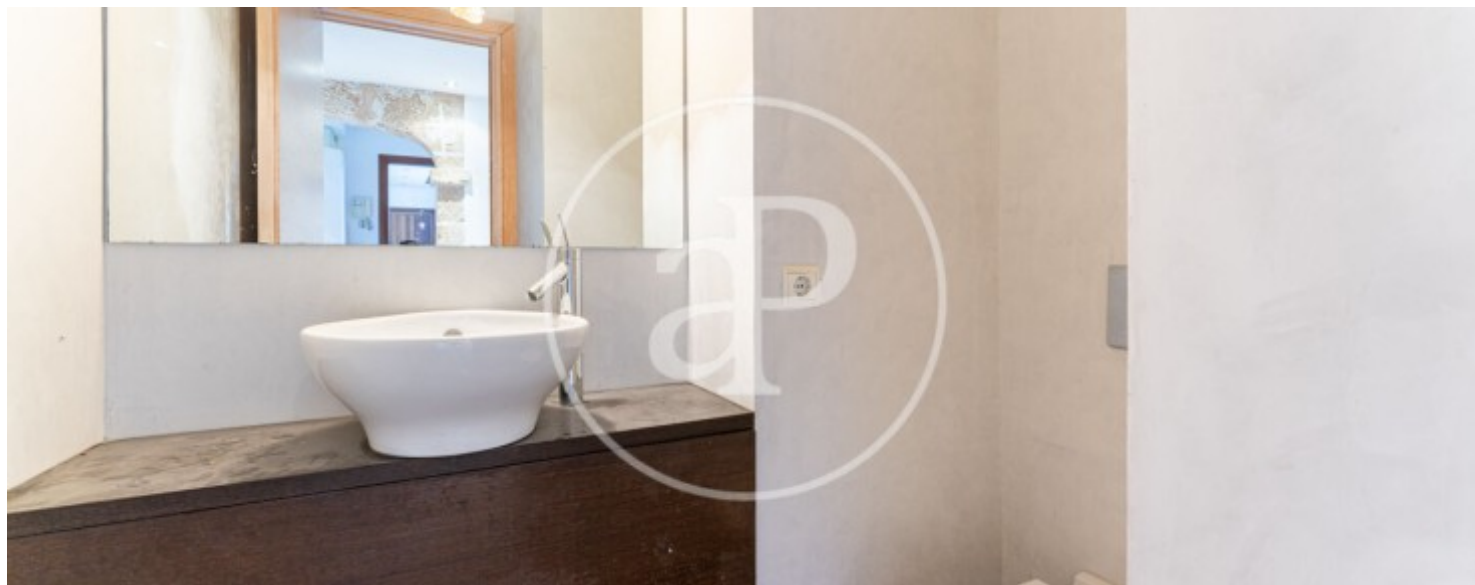
Sa Calatrava, Palma de Mallorca

REF. VPM2501005



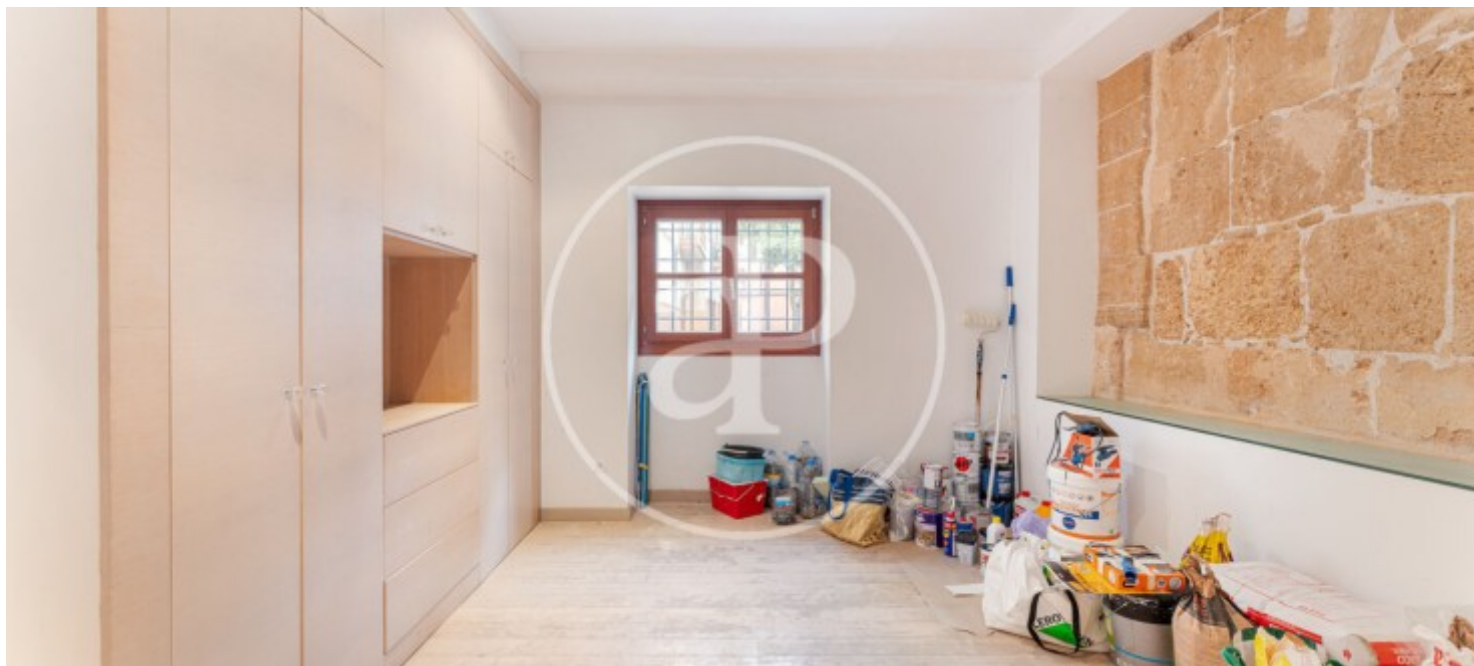
Sa Calatrava, Palma de Mallorca

REF. VPM2501005



Sa Calatrava, Palma de Mallorca

REF. VPM2501005



The information about any property is not binding to any offer or contract. Any verbal or written declaration made by aProperties with regards to the value or condition of the property should not be considered accurate or factual. The pictures make reference to some parts of the property at the times that they were taken. The areas, dimensions and distances that are given are approximate and should be checked by the client. The images are computer generated and are just an approximate indication of the real appearance of the property; these may change at any time. The information with regards to the property may also change at any time.

For **more information** or
to make an appointment

apropertiespalma@aproperties.es
Tel: 871 16 01 60
www.aproperties.es