

Sa Calatrava, Palma de Mallorca

REF. APMS2604015

# Duplex for Rent in Palma Old Town

## Features

Surface

**145 m<sup>2</sup>**

Bedrooms

**2**

Bathrooms

**2**

✓ Furnished

✓ AACC

Price

**1,700 €**



**In a very quiet street in the old town, next to the Plaza de San Francisco, we find this renovated duplex apartment of 145sqm.**

From the entrance door via stairs we access a spacious living-dining room, decorated with taste and originality in the details of the furniture. On the same floor we find a double bedroom with wardrobe, a complete bathroom with shower and a fully fitted and equipped kitchen. The first floor has exposed beams in the living room and in the bedroom, wooden doors respecting the Majorcan style and air conditioning in both rooms. From an original and wide staircase, in which we can see the typical Majorcan patio through its large window, we access

to the ground floor of the property with a vaulted ceiling in which we find a very spacious room with wardrobe, with the possibility to make also an office area. On the same floor we find a complete bathroom with bathtub and a laundry room with washer-dryer. Excellent location, close to the Paseo Marítimo, the Palza de Cort and Jaime III where we can find different shops and restaurants of the area. The community expenses and IBI are included in the rental price, the rest of the utilities will be paid by the tenant. Pets are not allowed. Can you imagine living here?

**Contact us,**  
we will be happy to assist you,  
to offer you more details and information.

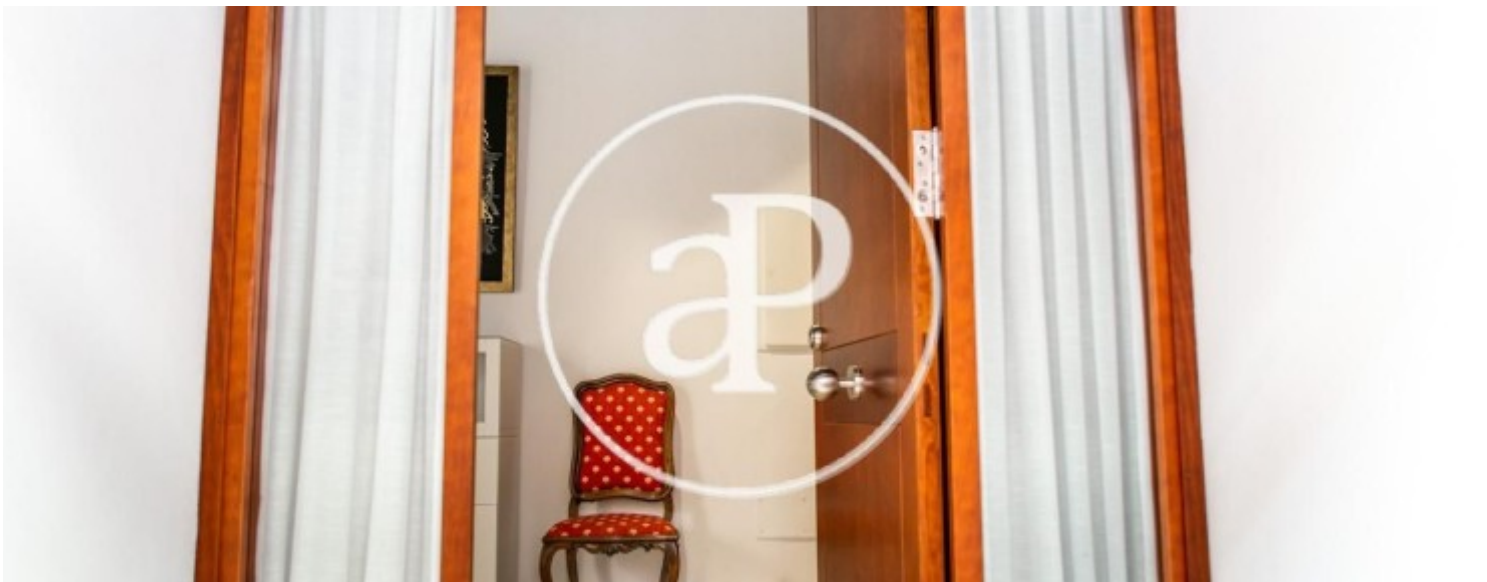
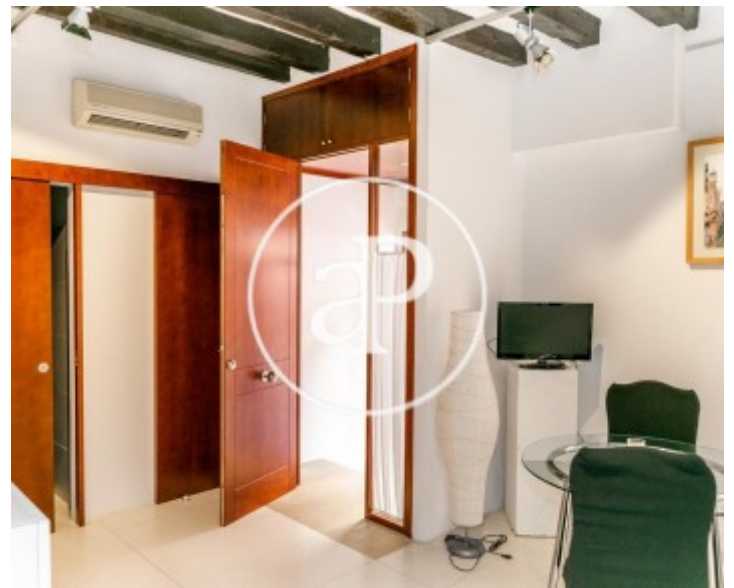
Sa Calatrava, Palma de Mallorca

REF. APMS2604015



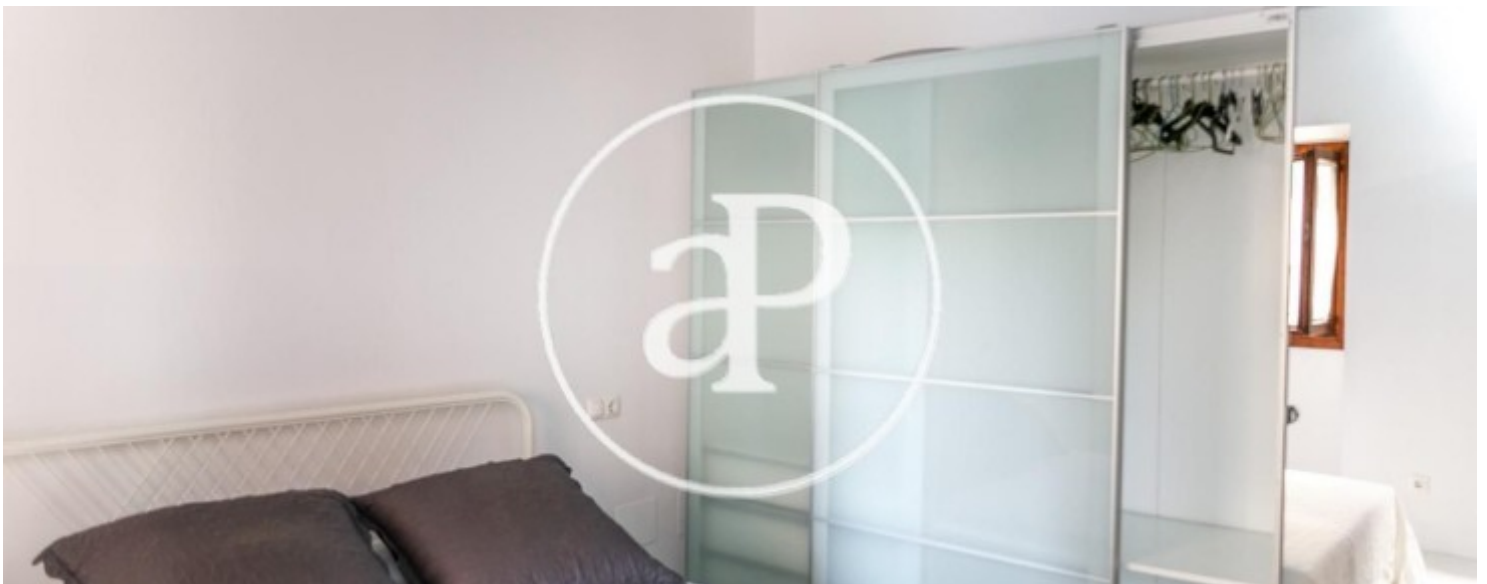
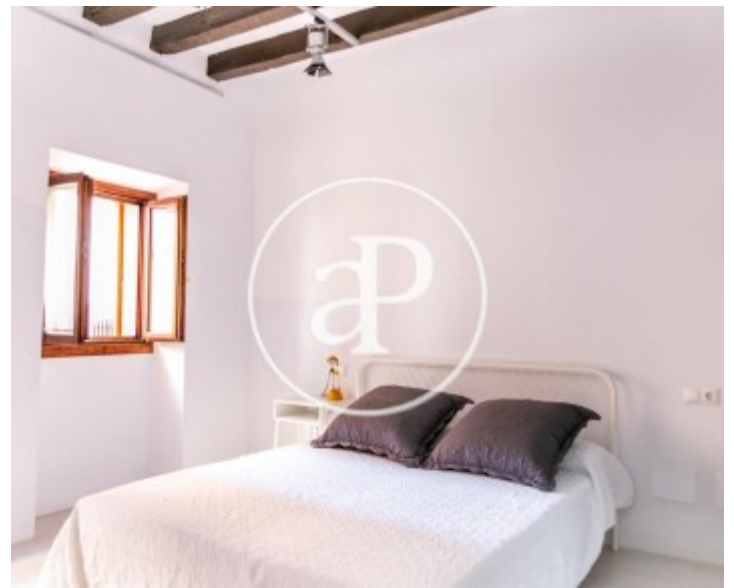
Sa Calatrava, Palma de Mallorca

REF. APMS2604015



Sa Calatrava, Palma de Mallorca

REF. APMS2604015



Sa Calatrava, Palma de Mallorca

REF. APMS2604015



The information about any property is not binding to any offer or contract. Any verbal or written declaration made by aProperties with regards to the value or condition of the property should not be considered accurate or factual. The pictures make reference to some parts of the property at the times that they were taken. The areas, dimensions and distances that are given are approximate and should be checked by the client. The images are computer generated and are just an approximate indication of the real appearance of the property; these may change at any time. The information with regards to the property may also change at any time.

For **more information** or  
to make an appointment

[apropertiespalma@aproperties.es](mailto:apropertiespalma@aproperties.es)  
Tel: 871 16 01 60  
[www.aproperties.es](http://www.aproperties.es)