



Puntiró, Palma de Mallorca

REF. VPM2210053

# Villa for sale in Puntiró with views over the bay of Palma

## Features

- ✓ Views
- ✓ Heating
- ✓ Furnished
- ✓ Boxroom
- ✓ AACC
- ✓ Terrace
- ✓ Backyard
- ✓ Pool
- ✓ Gym
- ✓ Has parking

Surface

620 m<sup>2</sup>

Bedrooms

5

Bathrooms

6

Price

1,950,000 €



**This spacious house consists of five bedrooms en suite, conveniently located on the ground floor with independent access to the garden.**

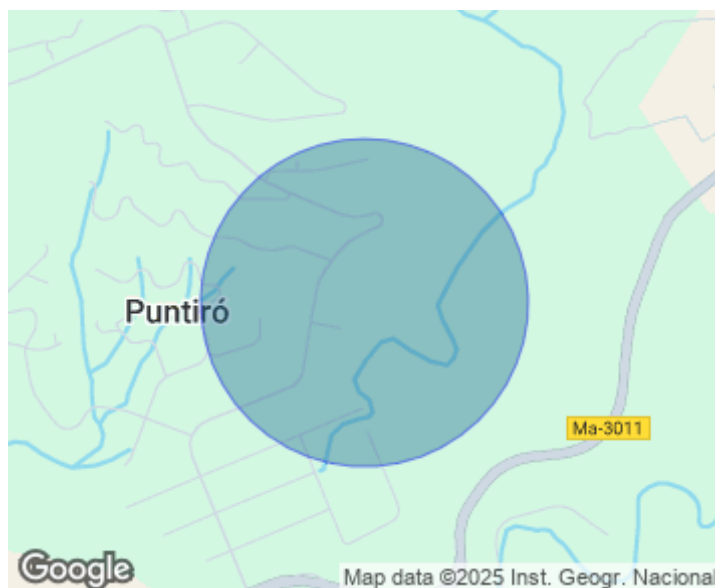
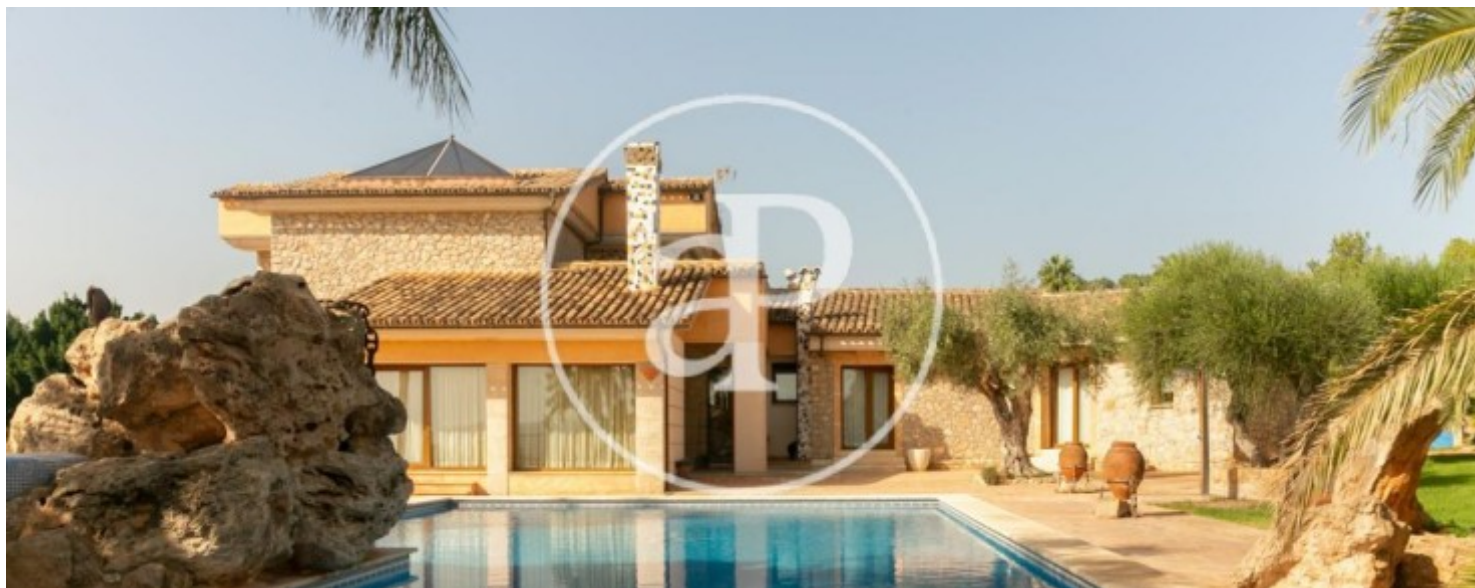
On the upper floor there is another very bright living room with its own terrace. On the main floor there is a splendid entrance hall, a large double height living/dining room with a skylight and its own water fountain, a fully fitted kitchen with dining area and pantry, and a guest toilet. On the lower floor there is a large garage for several cars, fitness room, wine cellar and office. With many terraces and optimally oriented to the southwest, the property achieves an excellent sun exposure and boasts a beautiful garden with palm

and fruit trees, as well as the magnificent swimming pool with Jacuzzi and panoramic views over the bay of Palma. The equipment features air conditioning, oil central heating, PVC windows with double glazing and alarm system. Puntiró is an exquisitely quiet residential area surrounded by unique properties in a privileged location, conveniently located only 20 minutes from Palma. Can you imagine living here? We look forward to your call!

**Contact us,**  
we will be happy to assist you,  
to offer you more details and information.

Puntiró, Palma de Mallorca

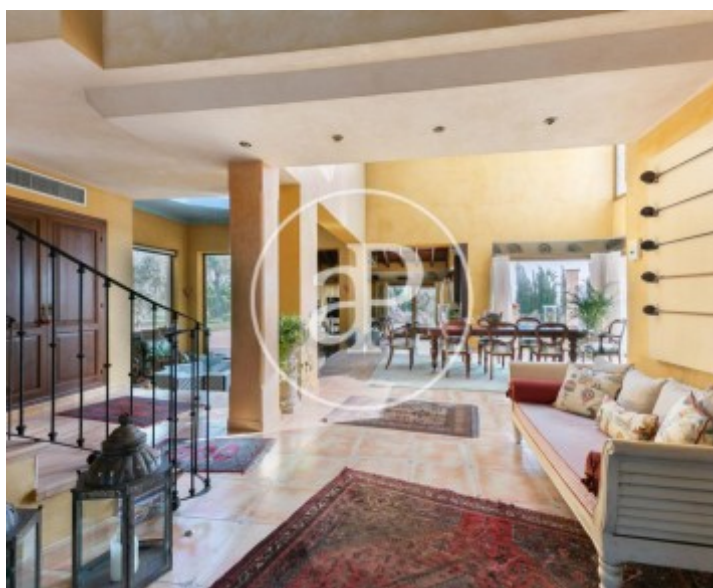
REF. VPM2210053





Puntiró, Palma de Mallorca

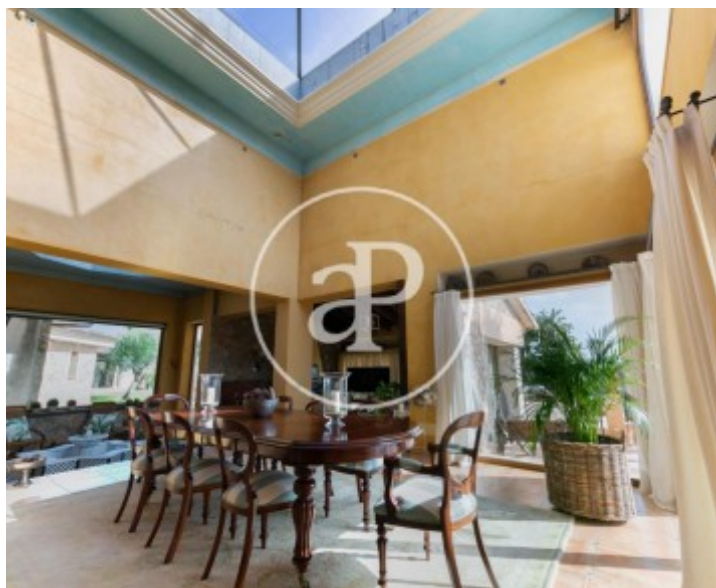
REF. VPM2210053





Puntiró, Palma de Mallorca

REF. VPM2210053





Puntiró, Palma de Mallorca

REF. VPM2210053



The information about any property is not binding to any offer or contract. Any verbal or written declaration made by aProperties with regards to the value or condition of the property should not be considered accurate or factual. The pictures make reference to some parts of the property at the times that they were taken. The areas, dimensions and distances that are given are approximate and should be checked by the client. The images are computer generated and are just an approximate indication of the real appearance of the property; these may change at any time. The information with regards to the property may also change at any time.

For **more information** or  
to make an appointment

[apropertiespalma@aproperties.es](mailto:apropertiespalma@aproperties.es)  
Tel: 871 16 01 60  
[www.aproperties.es](http://www.aproperties.es)