

Puig de Sant Pere, Palma de Mallorca

REF. APM2410002

Apartment for rent in Porto Pi

Features

- ✓ Views
- ✓ Heating
- ✓ Furnished
- ✓ AACC
- ✓ Lift
- ✓ Concierge
- ✓ Has parking

Surface

130 m²

Bedrooms

3

Price

2,700 €



LONG TERM RENTAL In a very quiet area close to Porto Pi, we find this luminous reformed 7th floor apartment of 130 sqm with unbeatable views to the sea, the bay of Palma and the cathedral.

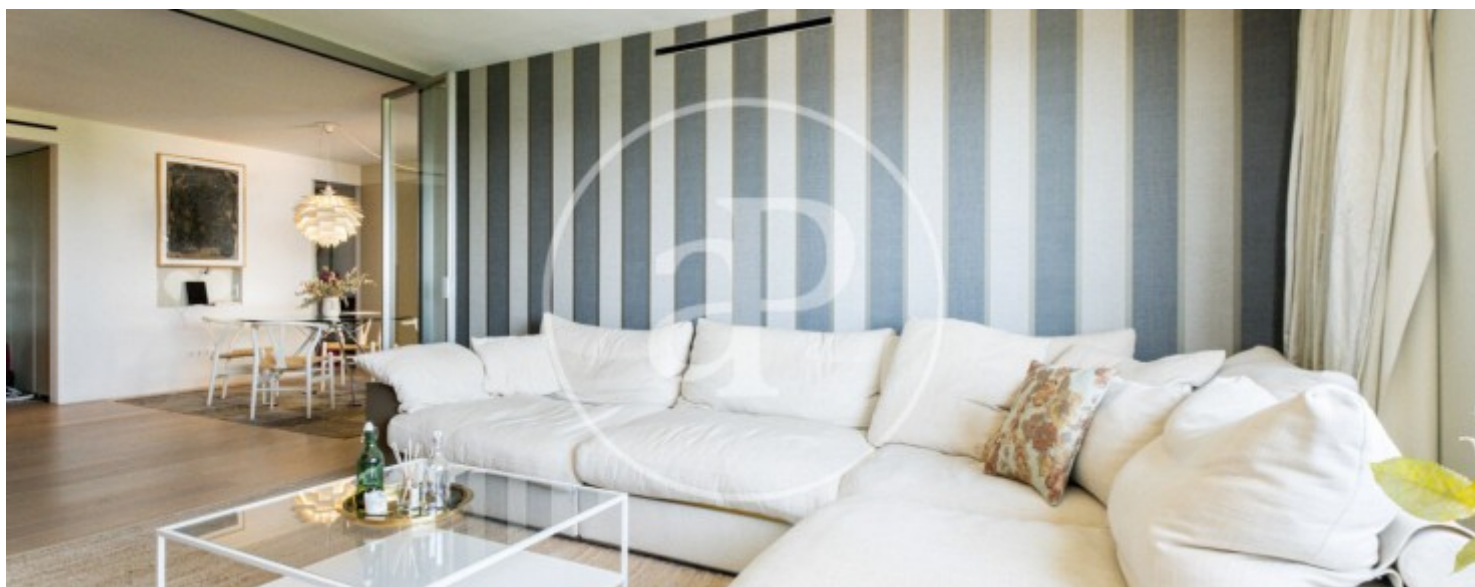
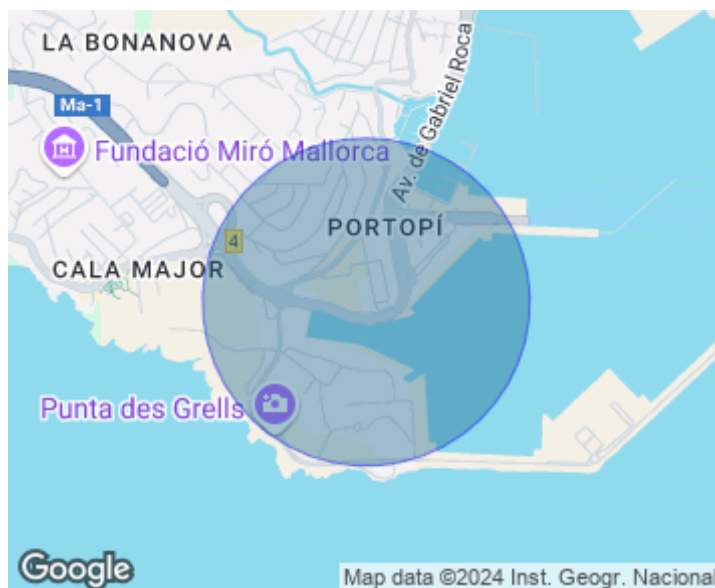
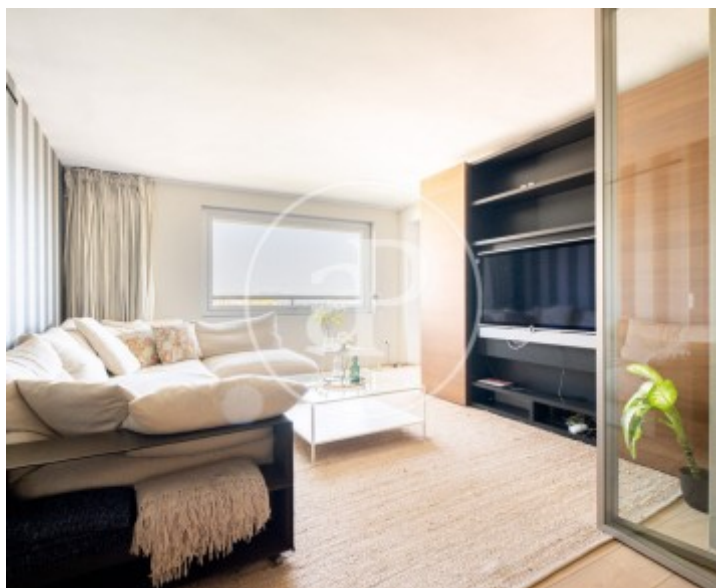
Through an entrance hall we access the day area where we find a modern and minimalist style living-dining room and an old glazed terrace. The independent kitchen is fully fitted and equipped. The night area consists of 3 bedrooms, 1 double and two singles with built-in wardrobes and two bathrooms with shower, one of them en suite. The property is fully furnished, stylishly decorated in light tones, has parquet floors, white lacquered wooden doors, good

window frames, hot and cold air conditioning in all rooms. It has a lift and an interior parking space. Outside the building there are also parking spaces. In the communal area we find a pleasant and very well kept garden area. Excellent location a few minutes walking distance from the Porto Pi shopping centre and in front of the Paseo Marítimo, very close to the sports club 'El Club de Mar'. The community fees and IBI are included in the rental price. The rest of the utilities will be paid by the tenant. Pets on request. Can you imagine...

Contact us,
we will be happy to assist you,
to offer you more details and information.

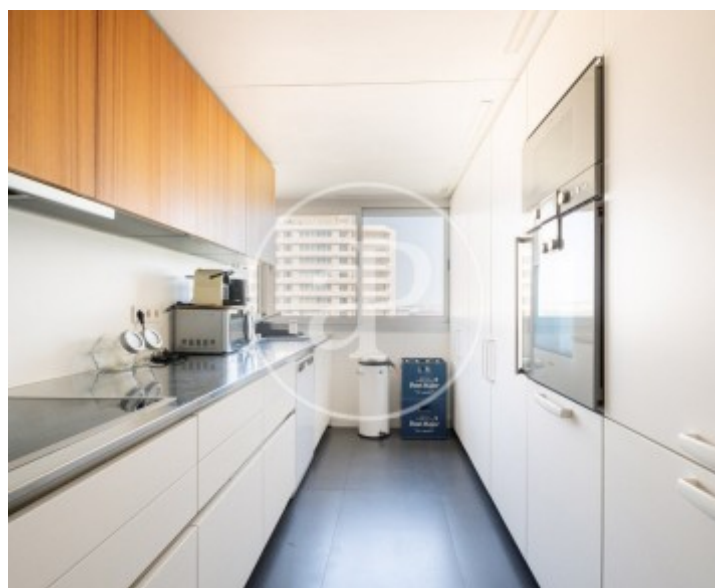
Puig de Sant Pere, Palma de Mallorca

REF. APM2410002



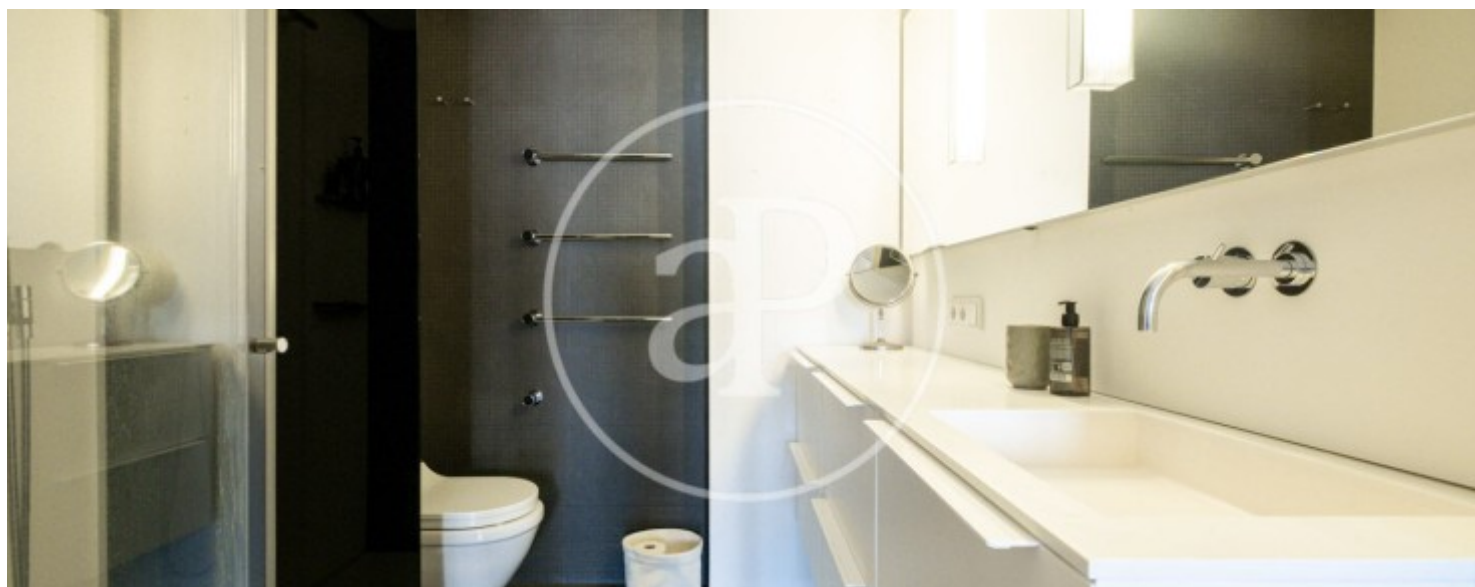
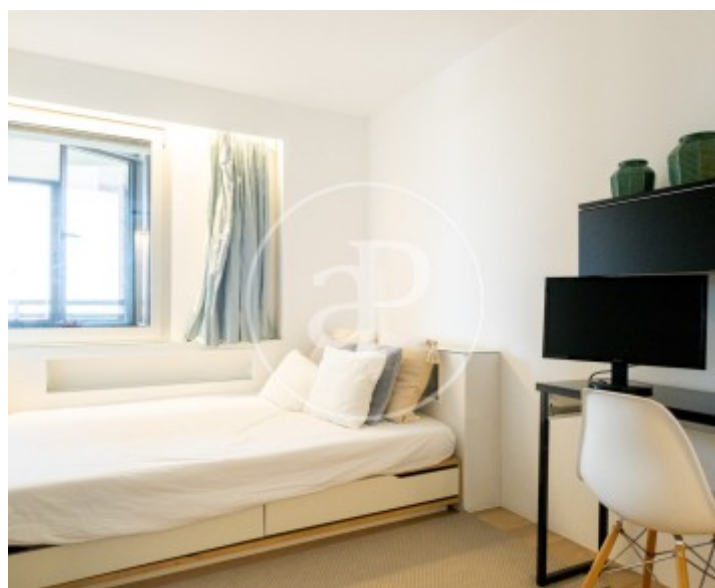
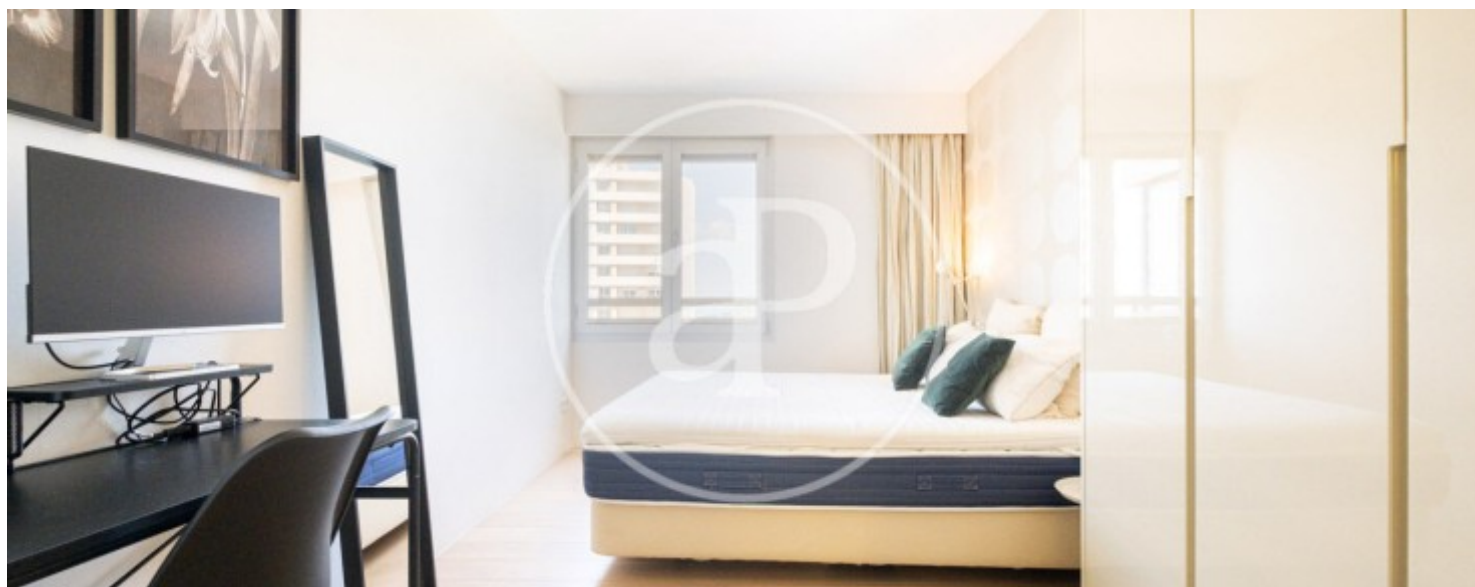
Puig de Sant Pere, Palma de Mallorca

REF. APM2410002



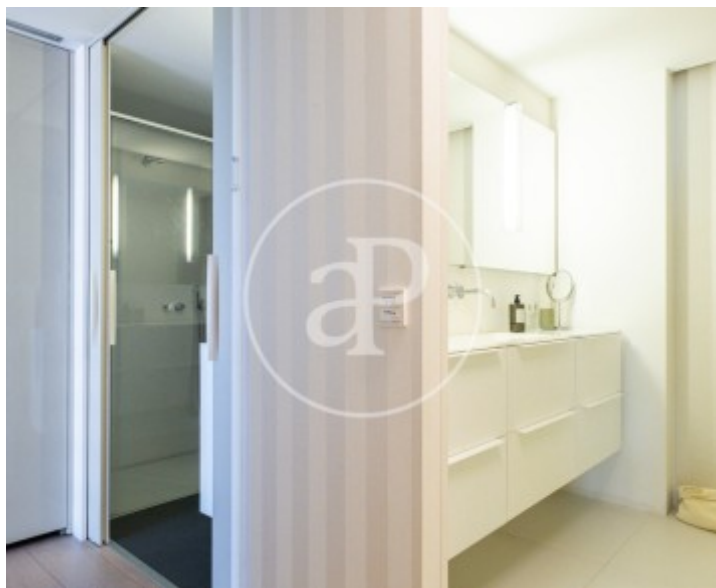
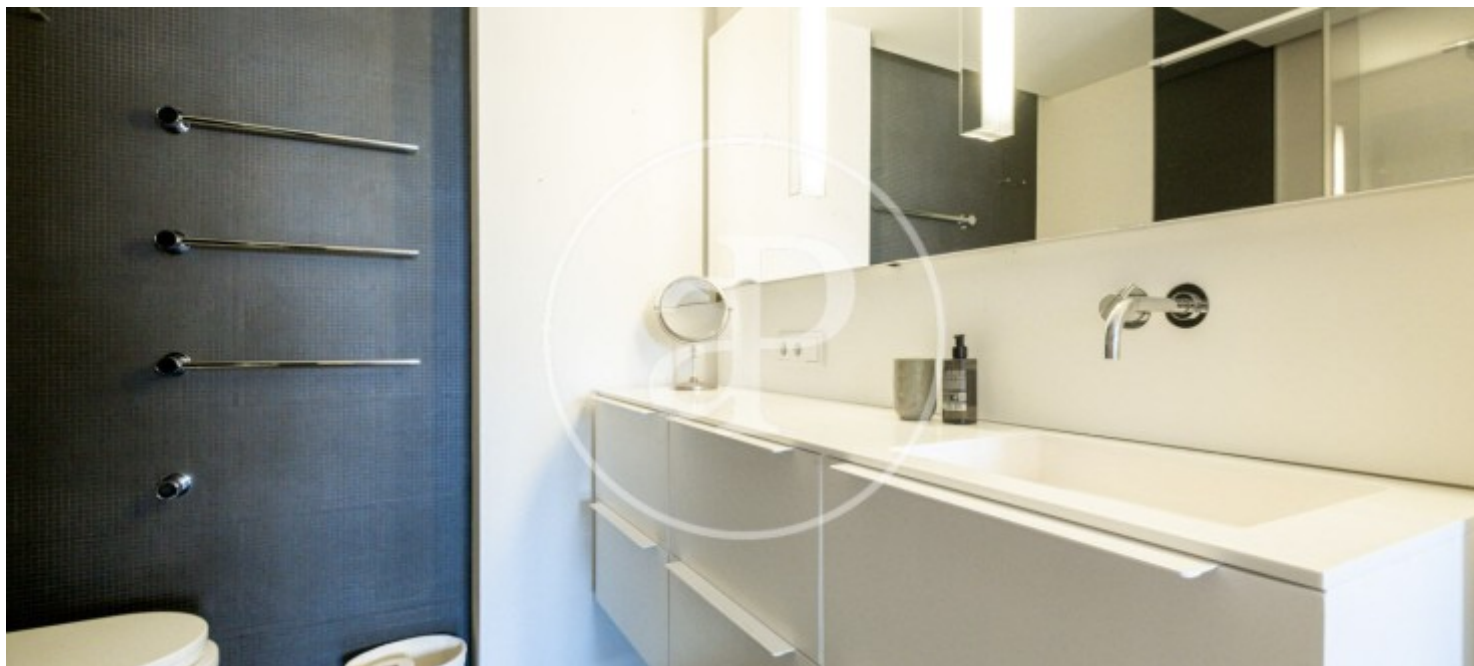
Puig de Sant Pere, Palma de Mallorca

REF. APM2410002



Puig de Sant Pere, Palma de Mallorca

REF. APM2410002



The information about any property is not binding to any offer or contract. Any verbal or written declaration made by aProperties with regards to the value or condition of the property should not be considered accurate or factual. The pictures make reference to some parts of the property at the times that they were taken. The areas, dimensions and distances that are given are approximate and should be checked by the client. The images are computer generated and are just an approximate indication of the real appearance of the property; these may change at any time. The information with regards to the property may also change at any time.

For **more information** or
to make an appointment

apropertiespalma@aproperties.es
Tel: 871 16 01 60
www.aproperties.es