

Portixol - Molinar, Palma de Mallorca

REF. VPM2210012



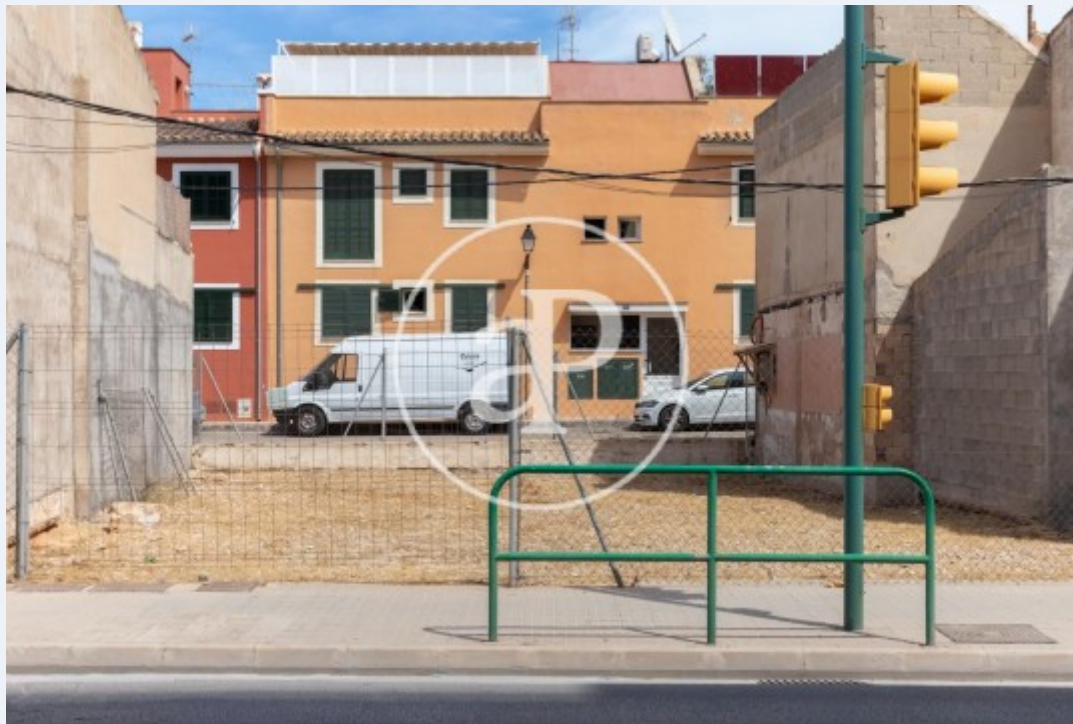
Land for sale in Portixol - Molinar (Palma de Mallorca)

Features

Surface
219 m²

Price

750,000 €



Great opportunity to build the house of your dreams! Plot of 219sqm on the main road of Portixol-Molinar.

The property has access from two streets and is ideal for the construction of a large single-family house or a building with several apartments. The buildability on this land is 100%. It is a unique opportunity in the area, for its size and location. The sea is just a few meters away, where you can enjoy the pleasant promenade. Other features to consider. Perimeter data: plot with rectangular shape and front with Lluçmajor street 13.25 ml, right medianera 17.30ml, left medianera 16.50ml and bottom with Street 218 11.10ml. It has a basic project for a

single-family house. Can you imagine living here? We are waiting for your call.

Contact us,
we will be happy to assist you,
to offer you more details and information.

Portixol - Molinar, Palma de Mallorca

REF. VPM2210012



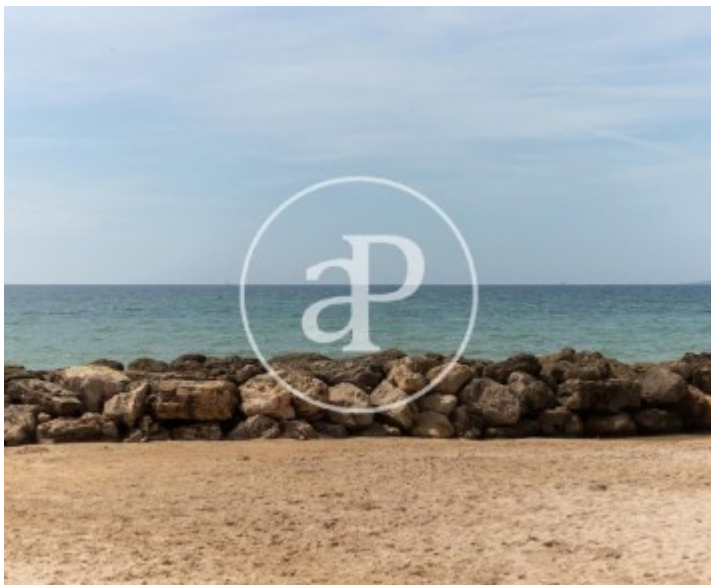


APROPERTIES
REAL ESTATE

Calle Unió 9
07001 Palma
T. 871 16 01 60
www.aproperties.es

Portixol - Molinar, Palma de Mallorca

REF. VPM2210012



The information about any property is not binding to any offer or contract. Any verbal or written declaration made by aProperties with regards to the value or condition of the property should not be considered accurate or factual. The pictures make reference to some parts of the property at the times that they were taken. The areas, dimensions and distances that are given are approximate and should be checked by the client. The images are computer generated and are just an approximate indication of the real appearance of the property; these may change at any time. The information with regards to the property may also change at any time.



For **more information** or
to make an appointment

apropertiespalma@aproperties.es
Tel: 871 16 01 60
www.aproperties.es