

Portixol - Molinar, Palma de Mallorca

REF. APM2607013

Detached Villa for Rent on Paseo de Portixol

Features

- ✓ Heating
- ✓ AACC
- ✓ Backyard
- ✓ Furnished
- ✓ Terrace
- ✓ Has parking

Surface

175 m²

Bedrooms

4

Bathrooms

3

Price

4,500 €



AVAILABLE FOR LONG-TERM OR TEMPORARY RENTAL Discover this spectacular detached villa located in Portixol, one of Palma's most exclusive and sought-after neighbourhoods, just a few steps from the beach.

A unique opportunity to enjoy the authentic Mediterranean lifestyle in a spacious, light-filled and fully equipped home. The property offers 175 m² of built area and an impressive 200 m² private terrace, providing the perfect setting to relax, soak up the sun, enjoy outdoor dining or spend unforgettable moments with family and friends. The villa features four spacious bedrooms, three full bathrooms and numerous built-in wardrobes, offering generous space,

comfort and practicality for the whole family. It is rented fully furnished and equipped, ready to move into from day one. Its excellent layout, abundant natural light and generous living spaces create a warm, elegant and comfortable atmosphere, making it ideal for both temporary stays and long-term living. The property is available immediately and can be rented on either a long-term or temporary basis, adapting to the tenant's needs. Its privileged location, just 100 metres from the beach, allows you to enjoy beautiful seaside walks, an outstanding selection of restaurants, cafés,...

Contact us,
we will be happy to assist you,
to offer you more details and information.

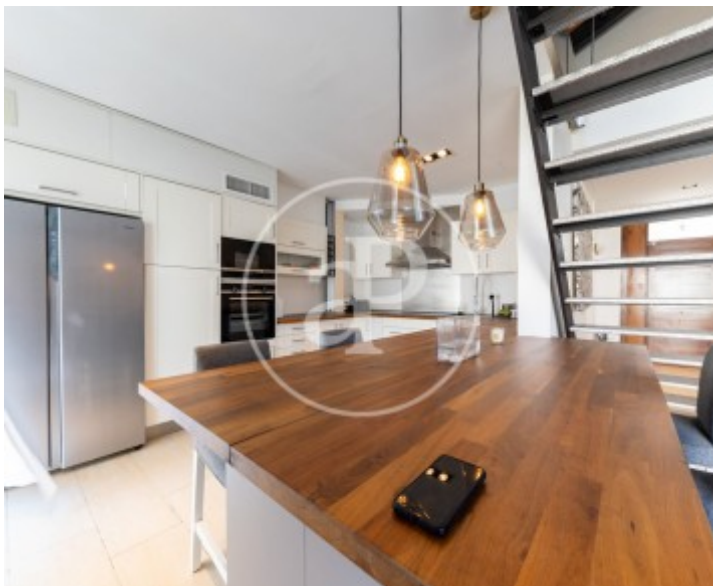
Portixol - Molinar, Palma de Mallorca

REF. APM2607013



Portixol - Molinar, Palma de Mallorca

REF. APM2607013



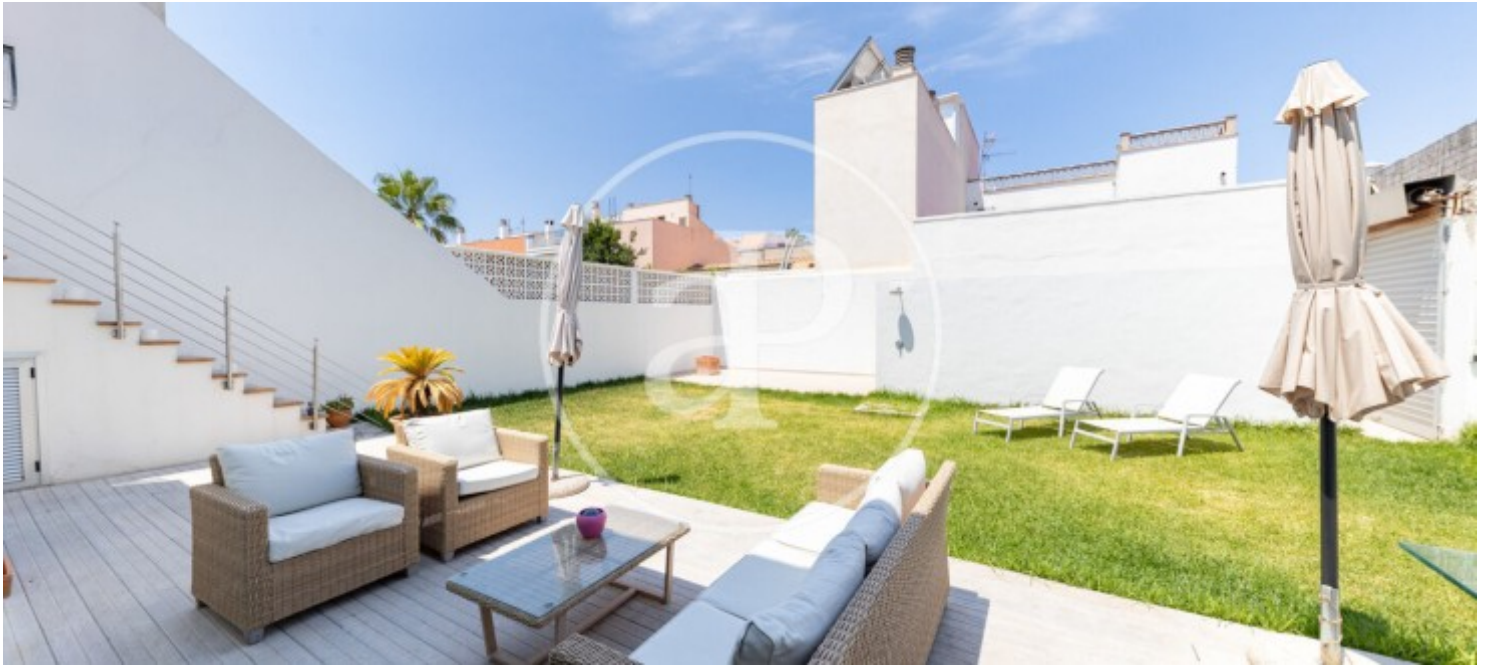
Portixol - Molinar, Palma de Mallorca

REF. APM2607013



Portixol - Molinar, Palma de Mallorca

REF. APM2607013



The information about any property is not binding to any offer or contract. Any verbal or written declaration made by aProperties with regards to the value or condition of the property should not be considered accurate or factual. The pictures make reference to some parts of the property at the times that they were taken. The areas, dimensions and distances that are given are approximate and should be checked by the client. The images are computer generated and are just an approximate indication of the real appearance of the property; these may change at any time. The information with regards to the property may also change at any time.

For **more information** or
to make an appointment

apropertiespalma@aproperties.es
Tel: 871 16 01 60
www.aproperties.es