



Portixol - Molinar, Palma de Mallorca

REF. VPM2502015

House for sale in Portixol, Palma

Features

- ✓ Views
- ✓ Heating
- ✓ Furnished
- ✓ AACC
- ✓ Terrace
- ✓ Backyard

Surface

172 m²

Bedrooms

3

Bathrooms

3

Price

1,980,000 €



Welcome to paradise by the sea! We present to you a unique gem: a stunning beach frontline penthouse that redefines coastal elegance and offers an incomparable living experience.

This splendid penthouse features: 3 Bedrooms and 1 Bathroom: with a carefully planned interior design, the three bedrooms offer comfort and privacy. The master bathroom, equipped with a large walk-in shower, provides a touch of luxury for your moments of relaxation. Living room with sea views: Imagine waking up every morning and enjoying a cup of coffee with panoramic views of the Mediterranean Sea from your cosy living room. Natural light floods the space, creating a warm and relaxing

atmosphere. Kitchen with access to terrace: The kitchen, designed with elegance and functionality, has access to a small terrace. This charming corner is the perfect place to enjoy al fresco breakfasts or intimate dinners. 39 sqm penthouse terrace: The real gem of this penthouse is its spectacular penthouse terrace, a 40 square metre space with unobstructed sea views. With a staircase leading directly from the kitchen, this terrace becomes your private oasis, ideal for delighting in unforgettable sunsets or enjoying a glass of wine under the starry sky. Every corner of this penthouse has...

Contact us,
we will be happy to assist you,
to offer you more details and information.

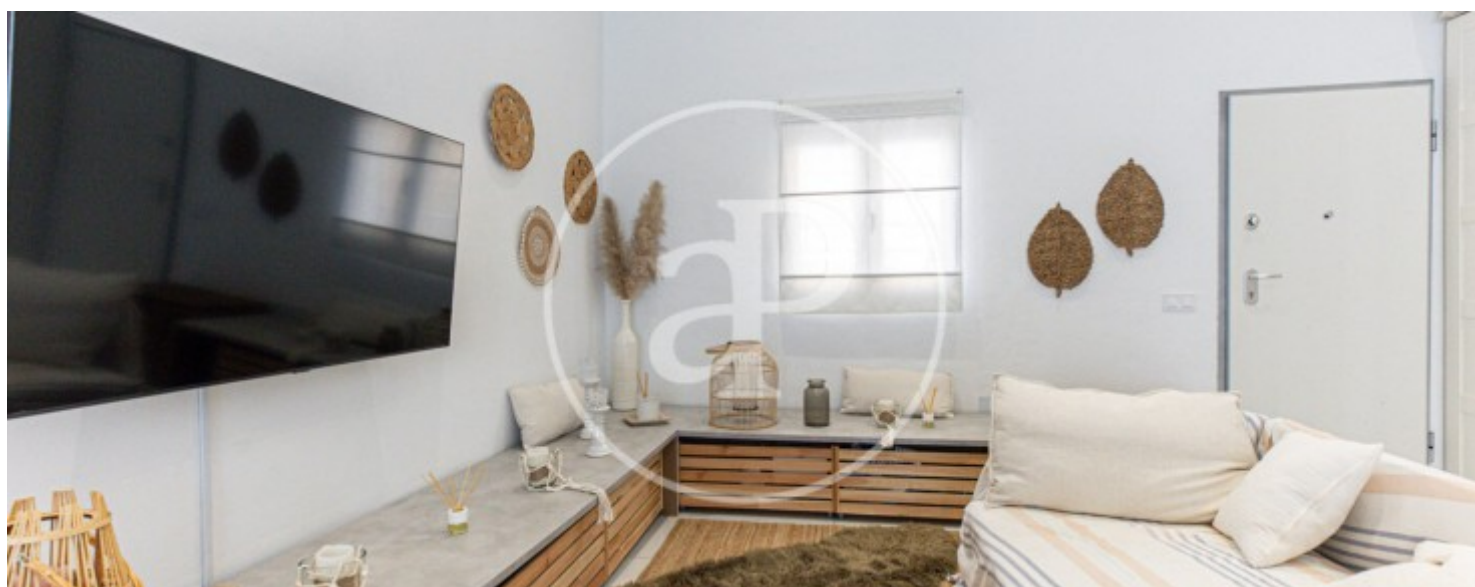
Portixol - Molinar, Palma de Mallorca

REF. VPM2502015



Portixol - Molinar, Palma de Mallorca

REF. VPM2502015



Portixol - Molinar, Palma de Mallorca

REF. VPM2502015



Portixol - Molinar, Palma de Mallorca

REF. VPM2502015



The information about any property is not binding to any offer or contract. Any verbal or written declaration made by aProperties with regards to the value or condition of the property should not be considered accurate or factual. The pictures make reference to some parts of the property at the times that they were taken. The areas, dimensions and distances that are given are approximate and should be checked by the client. The images are computer generated and are just an approximate indication of the real appearance of the property; these may change at any time. The information with regards to the property may also change at any time.

For **more information** or
to make an appointment

apropertiespalma@aproperties.es
Tel: 871 16 01 60
www.aproperties.es