

Polígono de Levante (Nou Llevant), Palma de Mallorca

REF. APM2511012

Flat for rent in Nou Llevant

Features

- ✓ Views
- ✓ Furnished
- ✓ AACC
- ✓ Pool
- ✓ Concierge
- ✓ Heating
- ✓ Boxroom
- ✓ Terrace
- ✓ Lift
- ✓ Has parking

Surface

104 m²

Bedrooms

2

Bathrooms

2



Price

2,500 €

We present this exclusive new-build apartment located just a 5-minute walk from Portixol Beach, one of Palma's most sought-after areas.

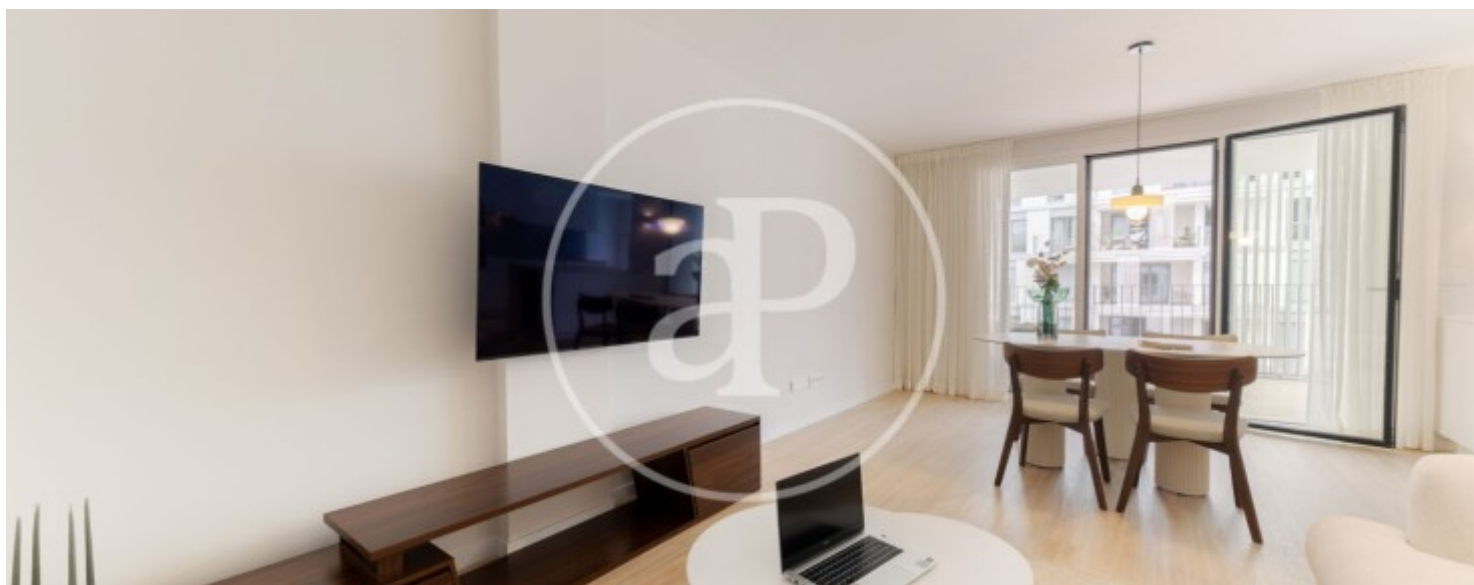
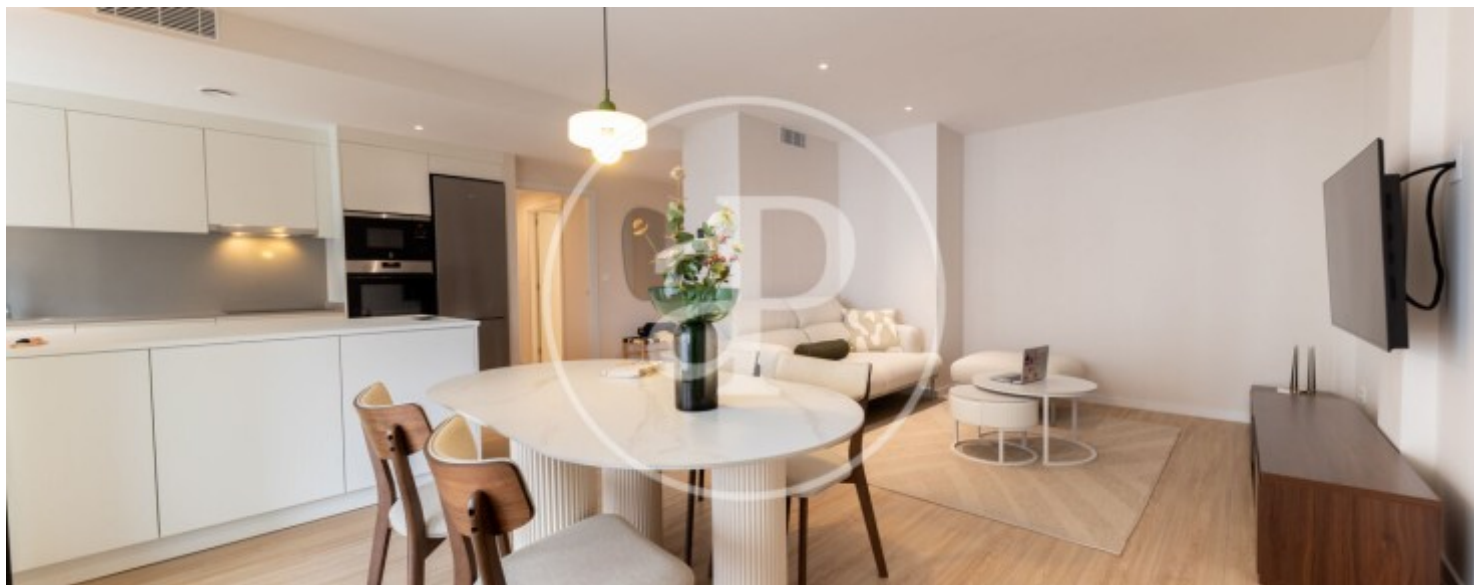
With 100 m² of living space, the apartment stands out for its contemporary design, abundant natural light, and excellent finishes. It features a private terrace, ideal for relaxing and enjoying the surroundings, as well as a living-dining room directly connected to it, two spacious bedrooms, and a fully equipped kitchen that combines functionality and style. The property is part of a modern building with high-end communal areas, including a swimming pool and a fully equipped gym, designed for those seeking comfort and well-being

without leaving home. A parking space in the same building and a storage room are also included, providing extra convenience that is hard to find in this area. The apartment is delivered furnished, ready to move in, and is available for long-term rental. A unique opportunity to settle in a modern, well-connected neighborhood, just minutes from the sea and the center of Palma. Can you imagine living here?

Contact us,
we will be happy to assist you,
to offer you more details and information.

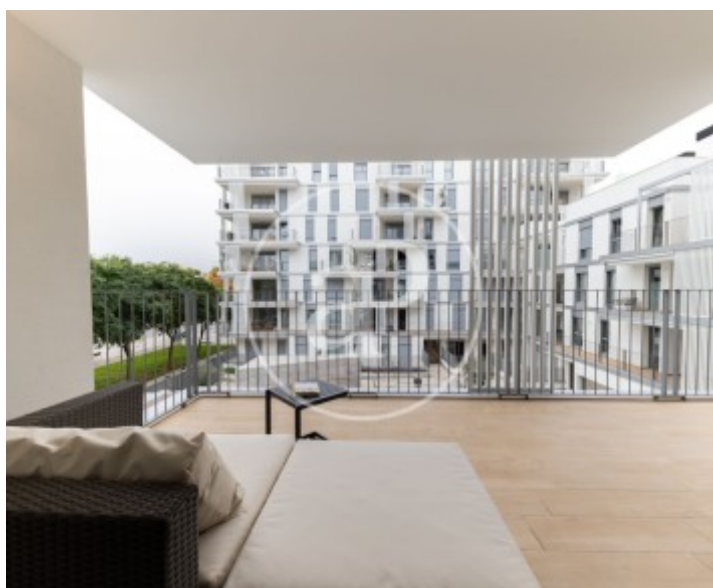
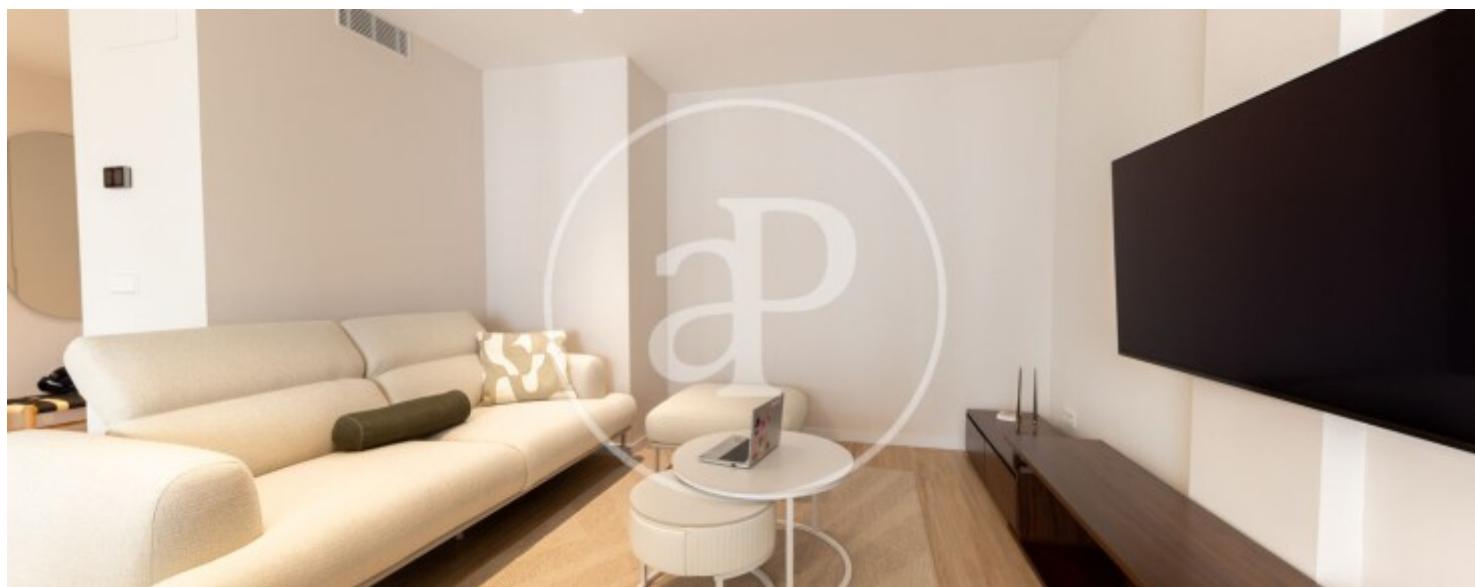
Polígono de Levante (Nou Llevant), Palma de Mallorca

REF. APM2511012



Polígono de Levante (Nou Llevant), Palma de Mallorca

REF. APM2511012



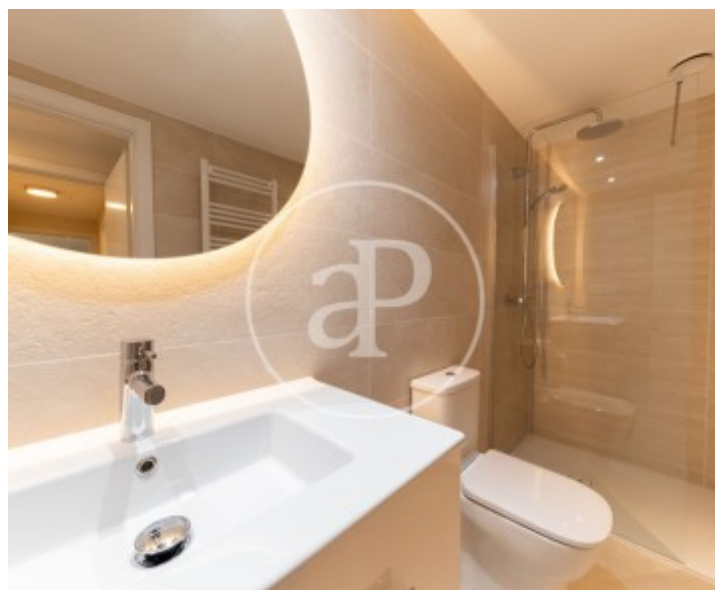
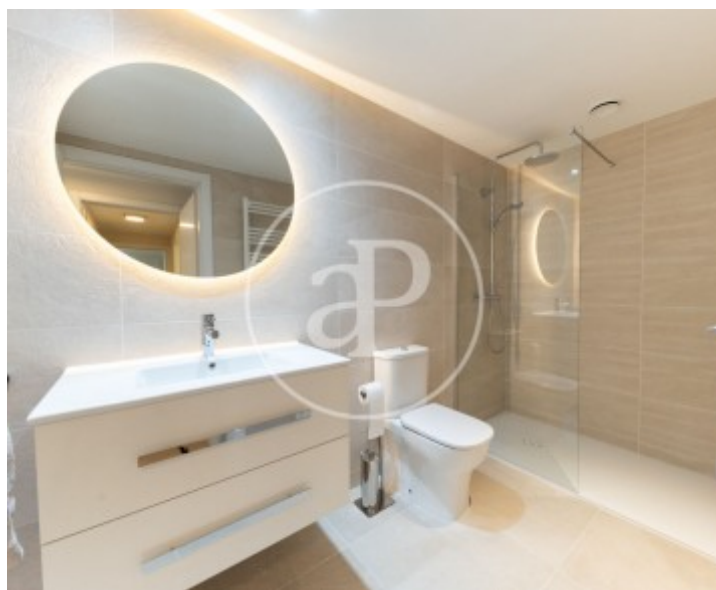
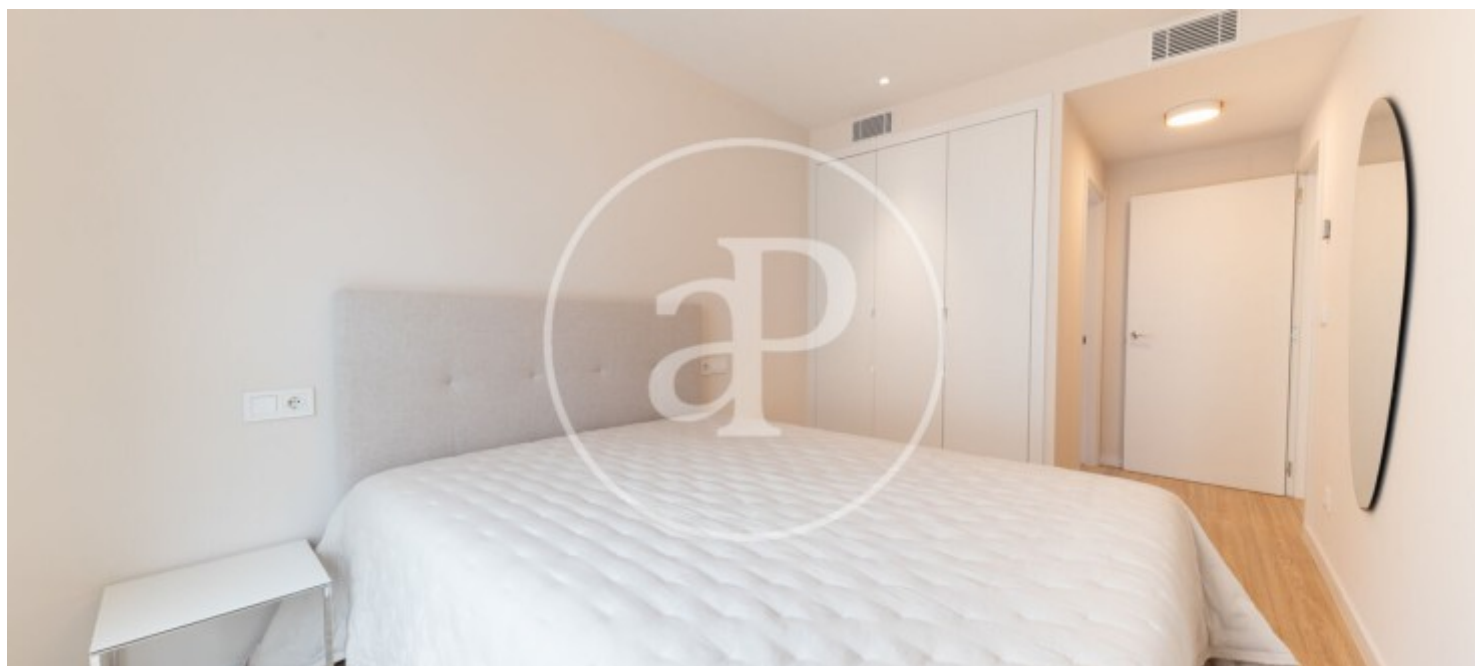
Polígono de Levante (Nou Llevant), Palma de Mallorca

REF. APM2511012



Polígono de Levante (Nou Llevant), Palma de Mallorca

REF. APM2511012



The information about any property is not binding to any offer or contract. Any verbal or written declaration made by aProperties with regards to the value or condition of the property should not be considered accurate or factual. The pictures make reference to some parts of the property at the times that they were taken. The areas, dimensions and distances that are given are approximate and should be checked by the client. The images are computer generated and are just an approximate indication of the real appearance of the property; these may change at any time. The information with regards to the property may also change at any time.

For **more information** or
to make an appointment

apropertiespalma@aproperties.es
Tel: 871 16 01 60
www.aproperties.es