



(Plaza España)

Ref: ONPM2405002



Penthouses for sale in Palma

In a privileged location in the heart of the city centre, in the parc de Ses Estacions, just a few minutes from the Plaza de España and a stone's throw from the Paseo Marítimo, is this new construction project. We present this stately building of high quality new construction with LIFT and staircase open to the noble central courtyard that brings light to all the flats that include PARKING, STORAGE and SOLARIUM TERRACE. The building is made up of different types of homes of the highest quality, where you can find homes from one to four bedrooms, some of them with balconies and high windows, with swimming pool and large terraces. The homes have large spaces with lots of light. The living-dining room opens onto the kitchen equipped with top of the range appliances, master bedroom with en suite bathroom and dressing room and guest bathroom. The modern equipment offers the best quality standards with state-of-the-art details and finishes, as well as current performance and energy saving techniques in its installations, underfloor heating, ducted air conditioning by aerothermal system. In addition, residents can enjoy a private gym on their own terrace with swimming [...]

Palma de Mallorca / Plaza España

Surface
137 m² - 138 m²
Units
12
Completion
Q2 2024

- ✓ Heating
- ✓ Boxroom
- ✓ AACC
- ✓ Lift
- ✓ Has parking

Price from 1,350,000 €

(Plaza España)

Ref: ONPM2405002

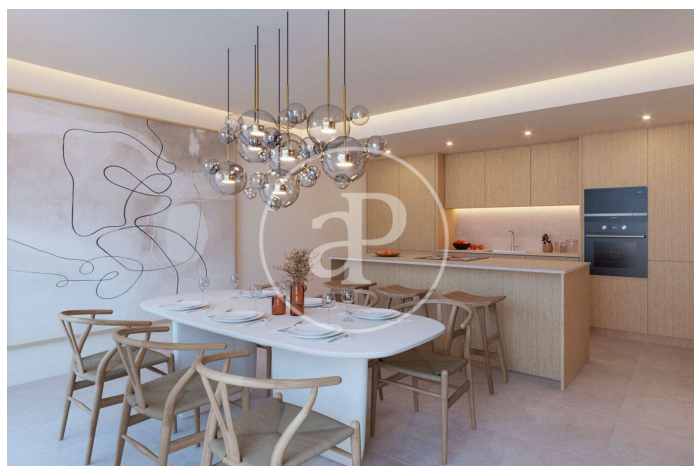
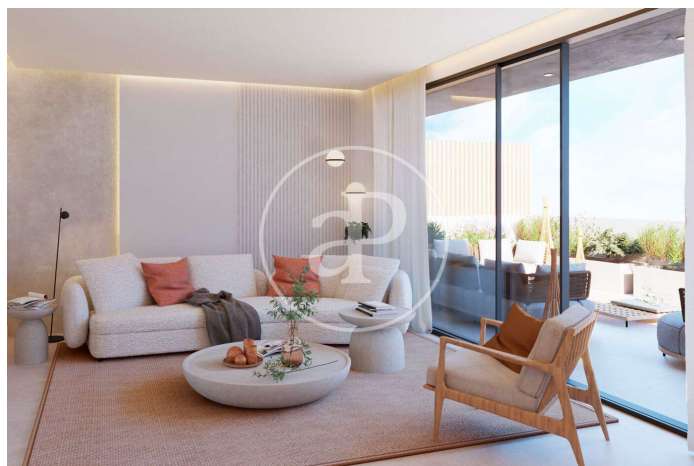
Units in this development

Type	Attic
Unit	3° ATICO
Surface	138 m ²
Terrace	1 (57 m ²)
Bedrooms	3
Bathrooms	3
Price	€ 1,350,000
State	Available

Type	Attic
Unit	3° ATICO
Surface	137 m ²
Terrace	1 (56 m ²)
Bedrooms	3
Bathrooms	3
Price	€ 1,350,000
State	Available

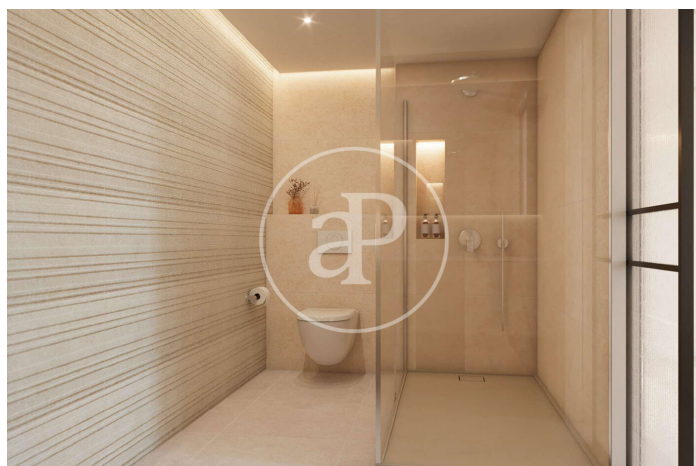
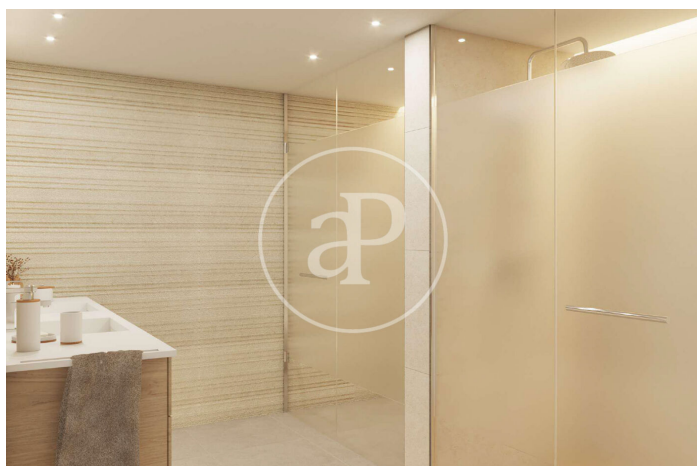
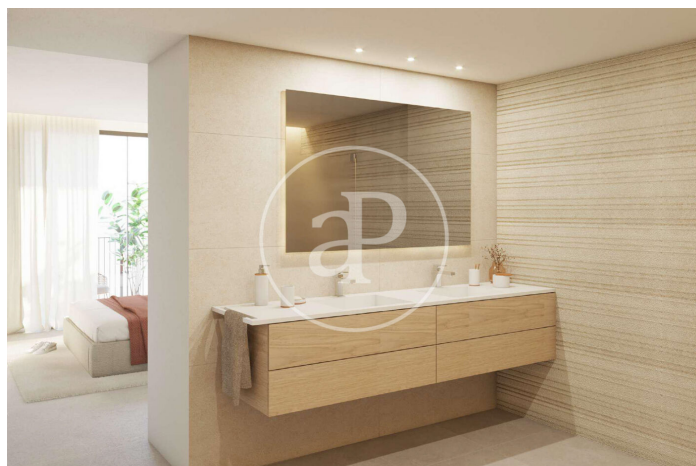
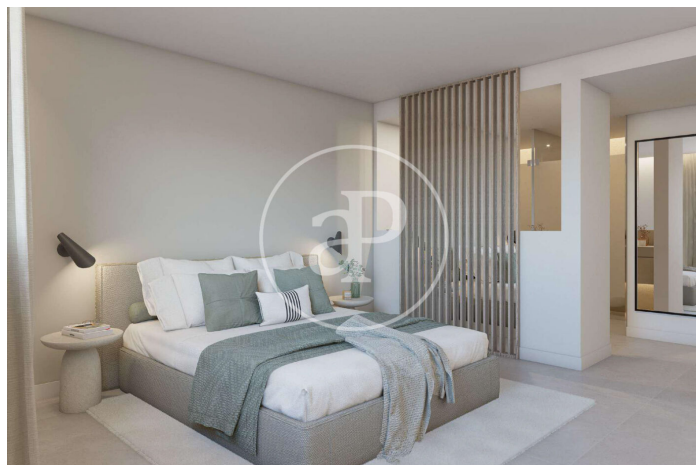
(Plaza España)

Ref: ONPM2405002



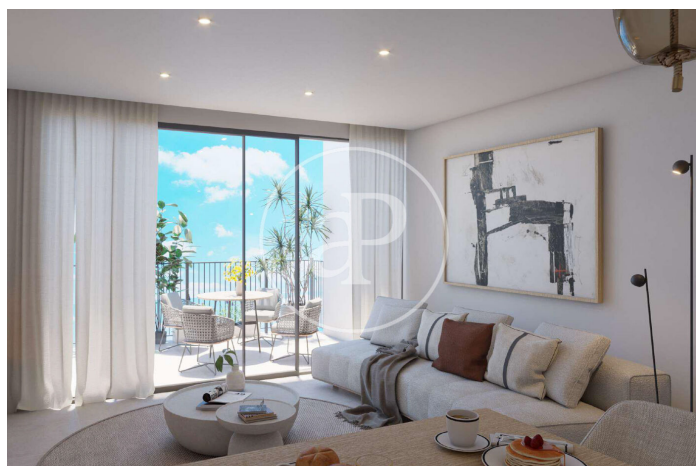
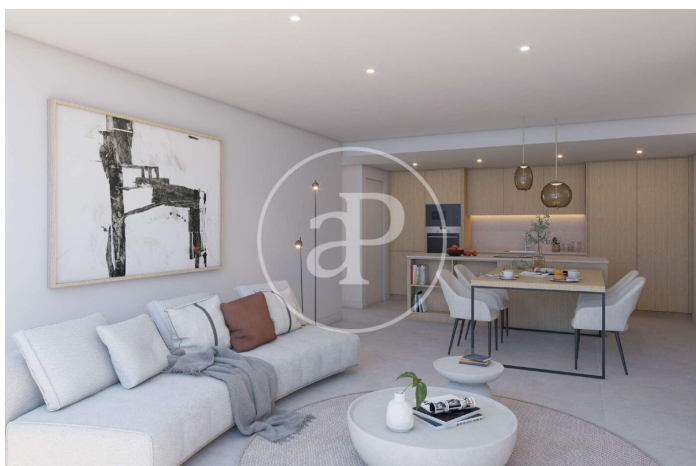
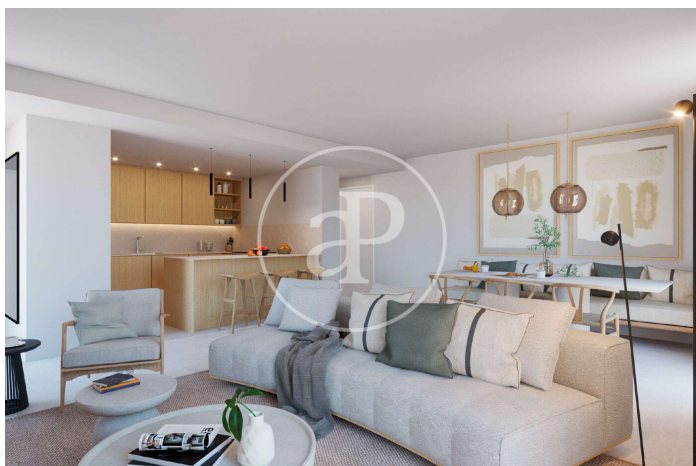
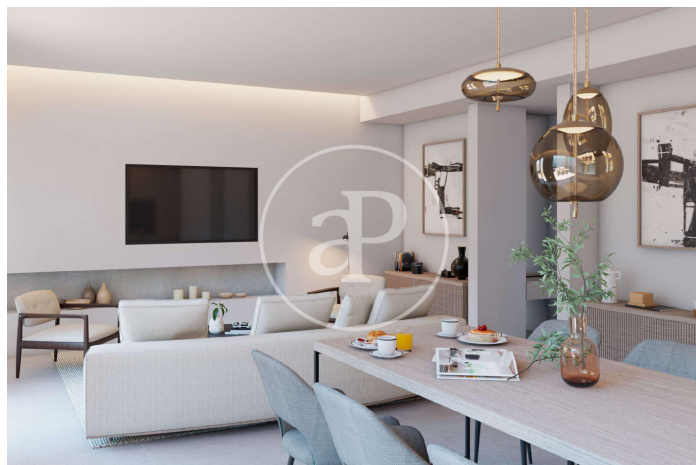
(Plaza España)

Ref: ONPM2405002



(Plaza España)

Ref: ONPM2405002



The information about any property is not binding to any offer or contract. Any verbal or written declaration made by aProperties with regards to the value or condition of the property should not be considered accurate or factual. The pictures make reference to some parts of the property at the times that they were taken. The areas, dimensions and distances that are given are approximate and should be checked by the client. The images are computer generated and are just an approximate indication of the real appearance of the property; these may change at any time. The information with regards to the property may also change at any time.

Contact us today for more information or to arrange a viewing

Tel: 871 16 01 60 apropertiespalma@aproperties.es <https://www.aproperties.es>