



Plaza España, Palma de Mallorca

REF. VPM2511013

# Building for sale in the centre of Palma

## Features

Surface

**890 m<sup>2</sup>**

Bedrooms

**5**

Bathrooms

**2**

✓ Terrace

Price

**2,000,000 €**



**In one of the streets with the best access to commercial areas, close to San Miguel and Plaza de España, we find a rationalist-style building with a ground floor and two upper levels.**

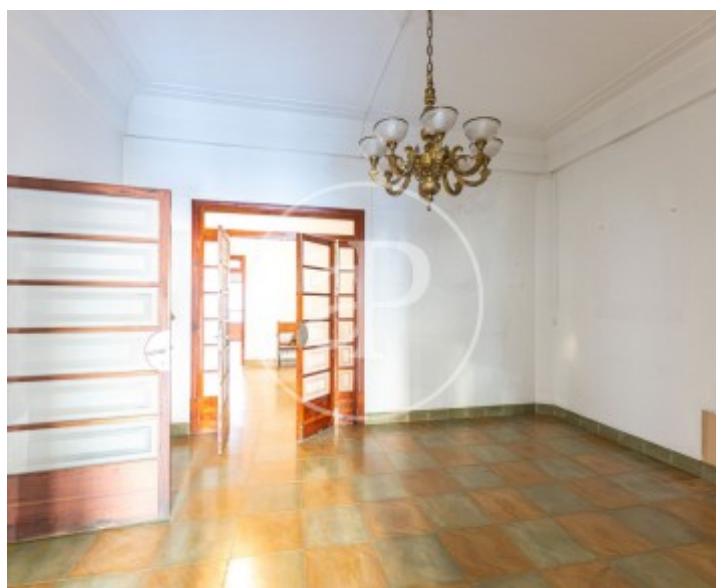
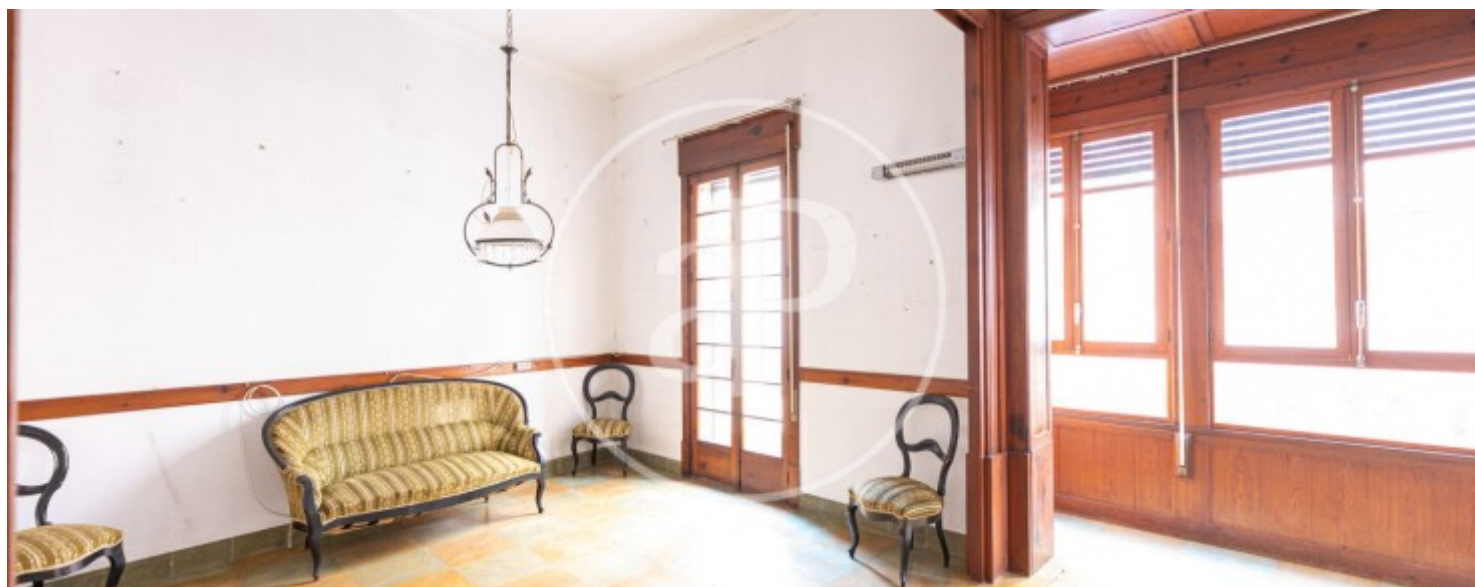
On the ground floor, there is a commercial space currently used as an art gallery, offering great potential for the future. It features arches, mezzanine areas that add character, as well as three rooms, a toilet, and a laundry room. This space offers many possibilities, as it can be adapted for a wide variety of uses. On the other hand, we find the main entrance, accessed through a wrought-iron and glass door that leads to a hall with marble flooring and the following

layout: First floor: A large hall with staircase, living room with fireplace, dining room, double bedroom with en-suite bathroom, and an additional room. Kitchen, guest toilet, and spacious patios. Second floor: Hall with fireplace, four bedrooms with en-suite bathrooms, as well as a rooftop terrace. Inside, the property features 40 x 40 hydraulic tiles with veining in green and amber tones arranged in a checkerboard pattern. All the carpentry is modernist. The house is very outward-facing and therefore filled with natural light. There is the possibility to add an additional floor...

**Contact us,**  
we will be happy to assist you,  
to offer you more details and information.

Plaza España, Palma de Mallorca

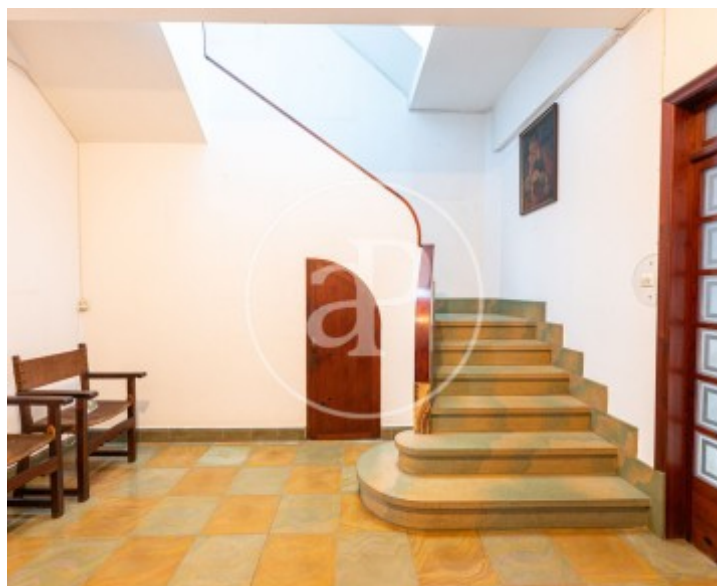
REF. VPM2511013





Plaza España, Palma de Mallorca

REF. VPM2511013



Plaza España, Palma de Mallorca

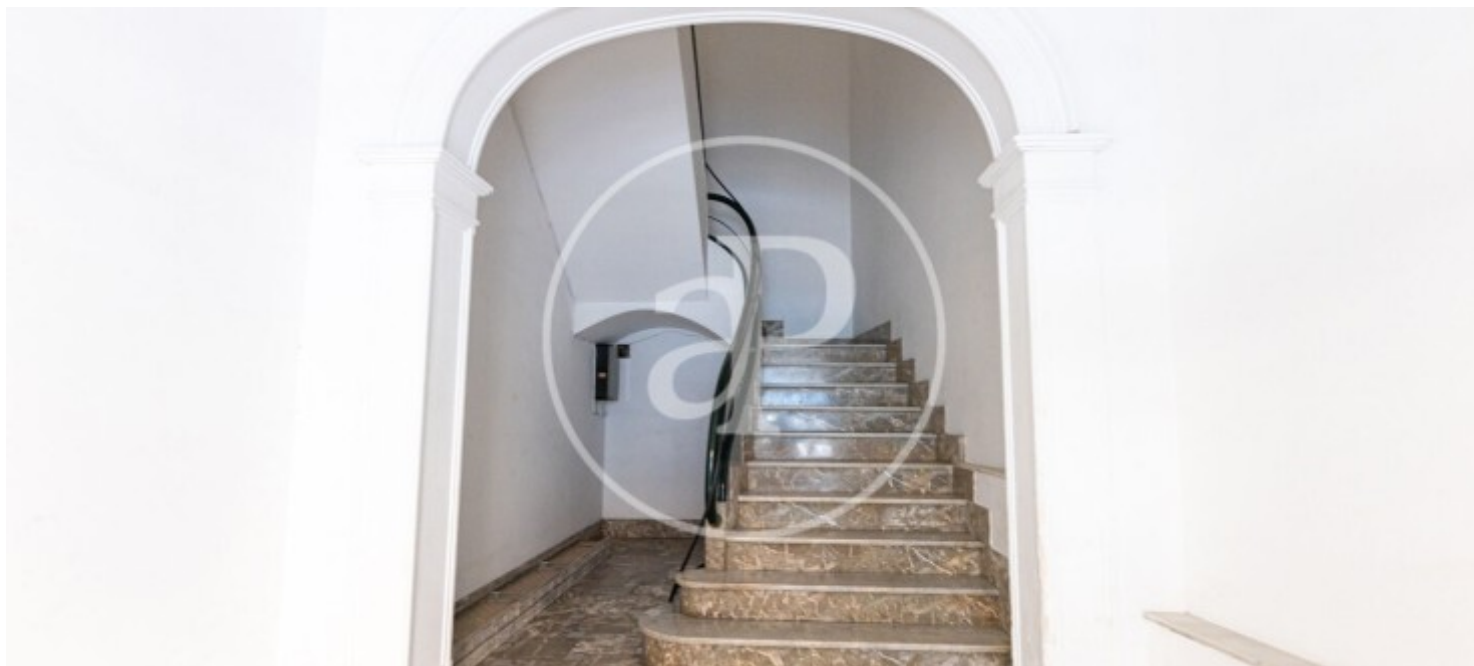
REF. VPM2511013





Plaza España, Palma de Mallorca

REF. VPM2511013



The information about any property is not binding to any offer or contract. Any verbal or written declaration made by aProperties with regards to the value or condition of the property should not be considered accurate or factual. The pictures make reference to some parts of the property at the times that they were taken. The areas, dimensions and distances that are given are approximate and should be checked by the client. The images are computer generated and are just an approximate indication of the real appearance of the property; these may change at any time. The information with regards to the property may also change at any time.

For **more information** or  
to make an appointment

[apropertiespalma@aproperties.es](mailto:apropertiespalma@aproperties.es)  
Tel: 871 16 01 60  
[www.aproperties.es](http://www.aproperties.es)