

Plaza España, Palma de Mallorca

REF. VPM2507009

Penthouse for Sale in Palma

Features

- ✓ Views
- ✓ Heating
- ✓ Furnished
- ✓ AACC
- ✓ Terrace
- ✓ Lift
- ✓ Concierge

Surface

230 m²

Bedrooms

6

Bathrooms

3



Price

1,300,000 €

We present this spacious and bright penthouse with a private 40?sqm terrace, located on the iconic Calle Sant Miquel in the heart of Palma's historic center. A

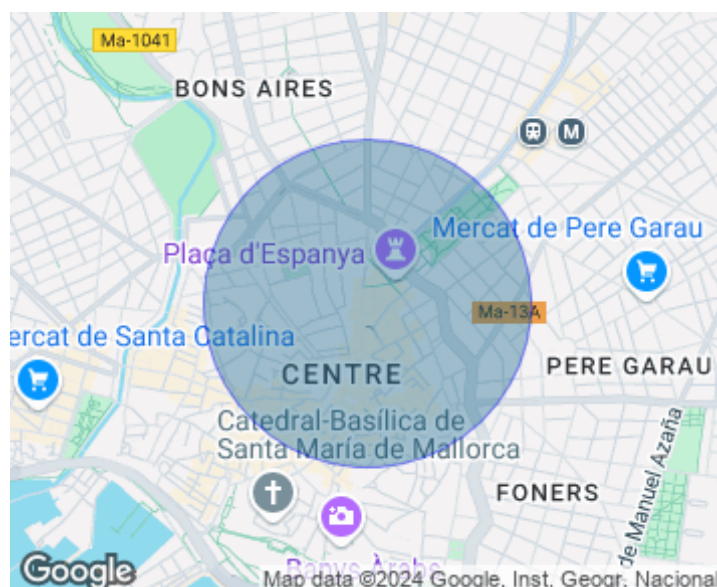
privileged location, just steps from the Olivar Market, surrounded by shops, boutiques, restaurants, and all services, with excellent transport connections thanks to its proximity to the Intermodal Station. The home is situated on the top floor of a building with a concierge and two elevators, ensuring accessibility and convenience. With a built area of 230?sqm, this property requires renovation but offers enormous potential to transform it into a unique residence tailored to your tastes and needs. The g

enerous hallway leads to an elegant living-dining room with direct access to a spectacular east-facing terrace—perfect for enjoying the morning sun in a tranquil and private setting. Adjacent to the living room is a bedroom with a full bathroom and direct terrace access, ideal for guests, a home office, or private area. The service area includes a breakfast kitchen, a service bedroom with bathroom, pantry, and laundry zone. The sleeping area comprises four exterior bedrooms with built-in wardrobes and two full bathrooms. Two bedrooms have direct terrace access, while the other two face...

Contact us,
we will be happy to assist you,
to offer you more details and information.

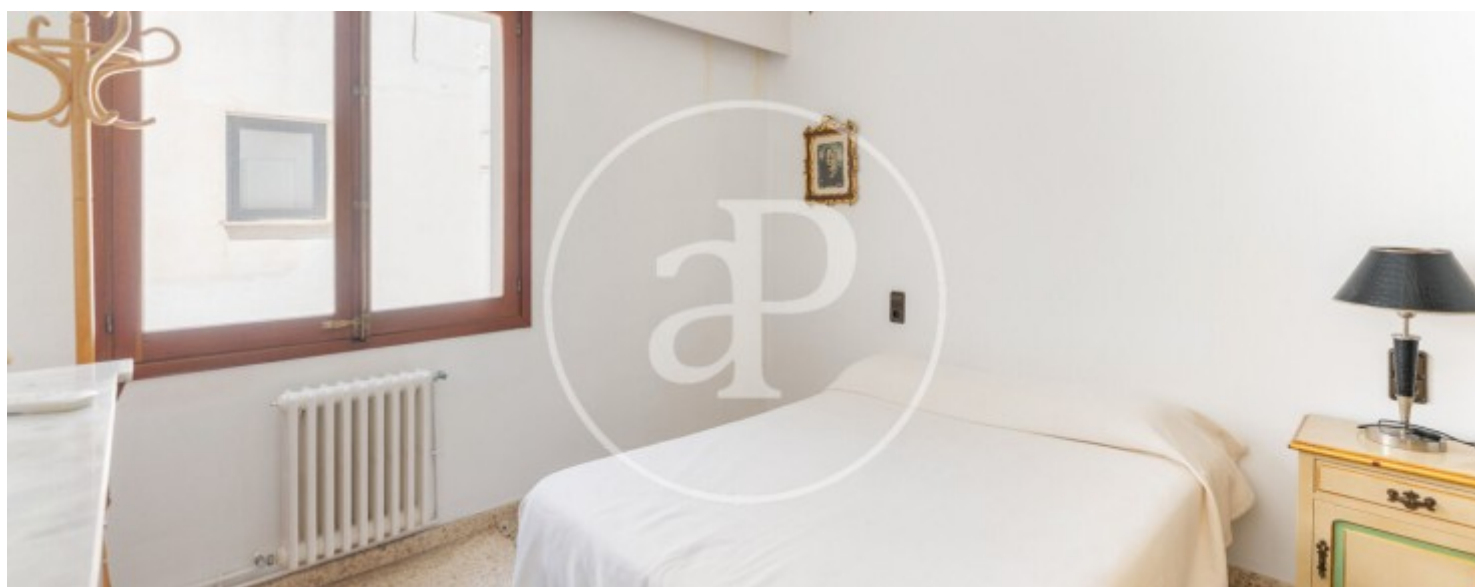
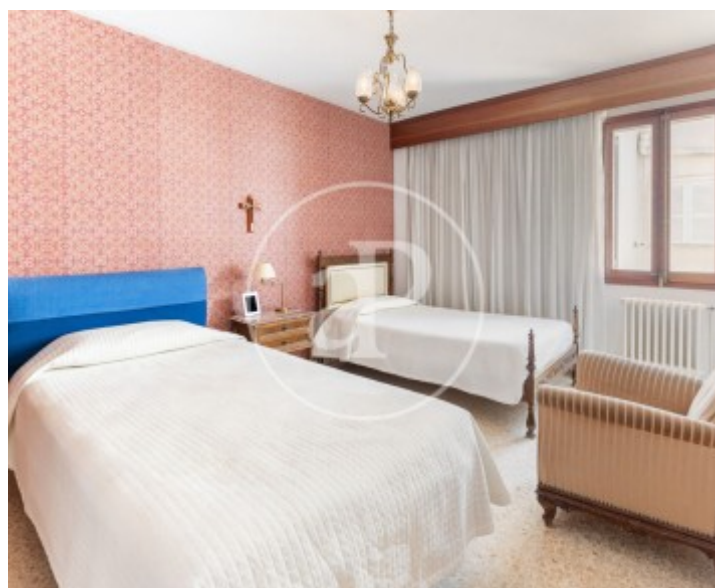
Plaza España, Palma de Mallorca

REF. VPM2507009



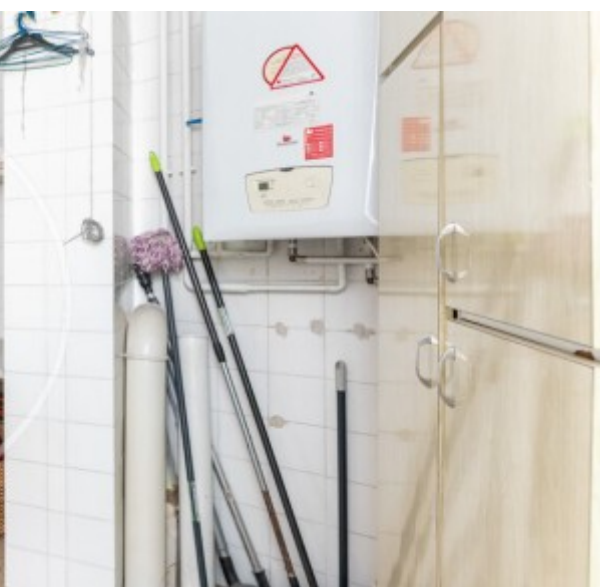
Plaza España, Palma de Mallorca

REF. VPM2507009



Plaza España, Palma de Mallorca

REF. VPM2507009



Plaza España, Palma de Mallorca

REF. VPM2507009



The information about any property is not binding to any offer or contract. Any verbal or written declaration made by aProperties with regards to the value or condition of the property should not be considered accurate or factual. The pictures make reference to some parts of the property at the times that they were taken. The areas, dimensions and distances that are given are approximate and should be checked by the client. The images are computer generated and are just an approximate indication of the real appearance of the property; these may change at any time. The information with regards to the property may also change at any time.

For **more information** or
to make an appointment

apropertiespalma@aproperties.es
Tel: 871 16 01 60
www.aproperties.es