

Playa de Palma, Palma de Mallorca

REF. VPM2306004



## Plot of land for construction of a building next to the sea in Playa de Palma

### Features

Surface  
**295 m<sup>2</sup>**

Price  
**890,000 €**



**These are two plots of land with a total of 295sqm situated 80m from the sea in Playa de Palma.**

On the two plots there are two old single storey houses of easy demolition where the new general plan allows the construction of a building of 10 flats plus 18 underground parking spaces. It is located in a privileged situation as it is only a few minutes away from all the tourist attractions and shops, but in a quieter area of Playa de Palma. After studies it is recommended to realise a project of 9 flats and 18 underground parking spaces. It would consist of 3 ground floors, 3 first floors and 3 duplex penthouses with terraces. The two plots are sold in order to unify and

to be able to develop the described building. This would be a preliminary project. Situated in Playa de Palma, just a few metres from the sea, the plots are located in one of the most peaceful areas. Only a few minutes away from all the attractions, shops and supermarkets. Only 5 minutes from the airport and 15 minutes from the city.

**Contact us,**  
we will be happy to assist you,  
to offer you more details and information.

Playa de Palma, Palma de Mallorca

REF. VPM2306004





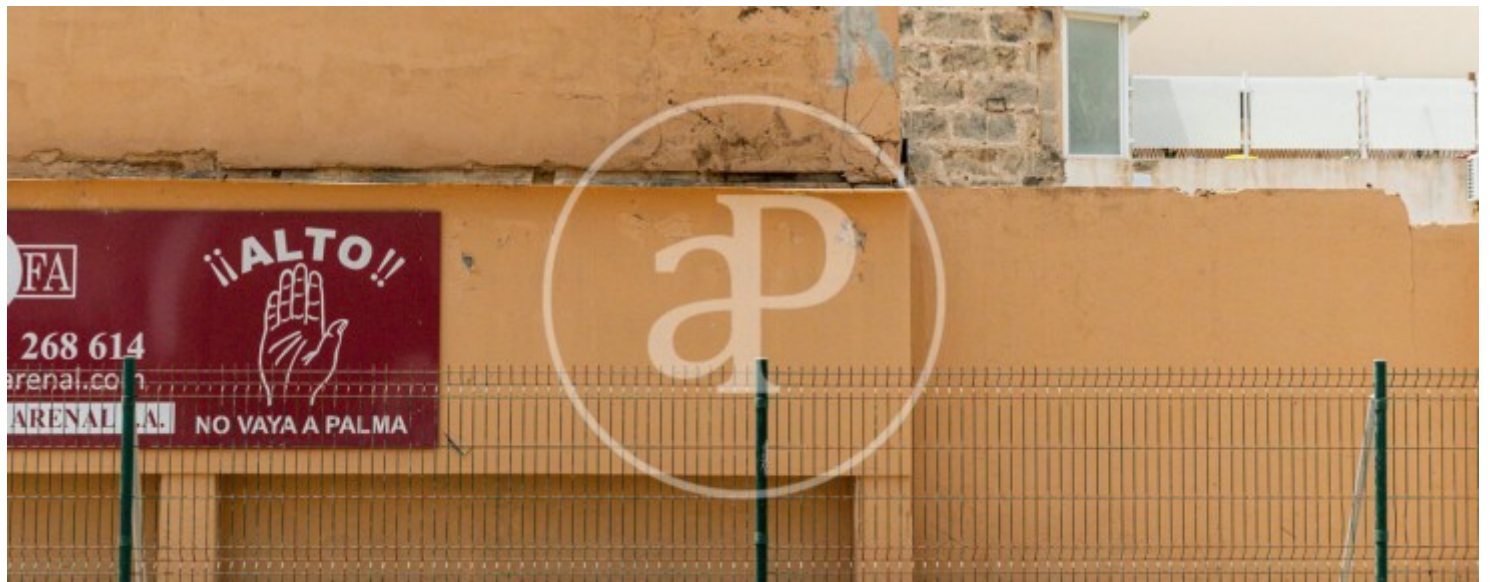
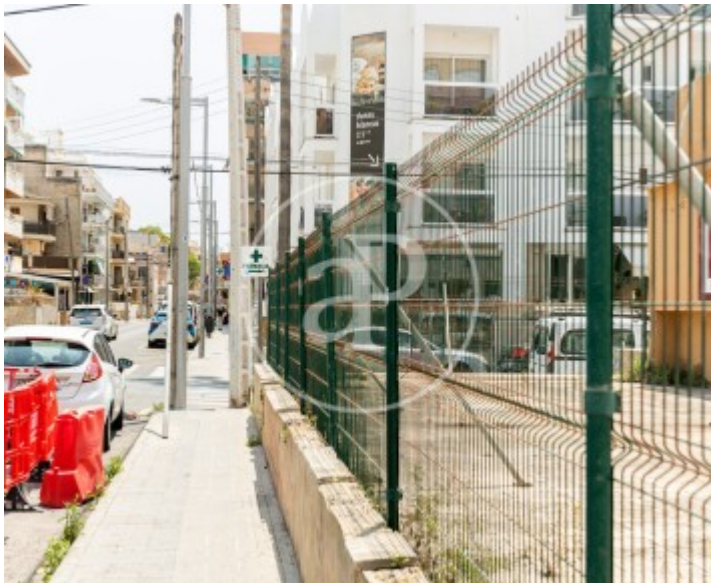


APROPERTIES  
REAL ESTATE

Calle Unió 9  
07001 Palma  
T. 871 16 01 60  
[www.aproperties.es](http://www.aproperties.es)

Playa de Palma, Palma de Mallorca

REF. VPM2306004





Playa de Palma, Palma de Mallorca

REF. VPM2306004







**APROPERTIES**  
REAL ESTATE

Calle Unió 9  
07001 Palma  
T. 871 16 01 60  
[www.aproperties.es](http://www.aproperties.es)

Playa de Palma, Palma de Mallorca

REF. VPM2306004



The information about any property is not binding to any offer or contract. Any verbal or written declaration made by aProperties with regards to the value or condition of the property should not be considered accurate or factual. The pictures make reference to some parts of the property at the times that they were taken. The areas, dimensions and distances that are given are approximate and should be checked by the client. The images are computer generated and are just an approximate indication of the real appearance of the property; these may change at any time. The information with regards to the property may also change at any time.



For **more information** or  
to make an appointment

[apropertiespalma@aproperties.es](mailto:apropertiespalma@aproperties.es)  
Tel: 871 16 01 60  
[www.aproperties.es](http://www.aproperties.es)