

(Playa de Palma)

Ref: ONPM2211003



## *New Construction Development in La Ribera*

This development of 26 semi-detached houses, located in La Ribera, a residential area of Palma next to the beach, is only 400 meters away. You will only need a few minutes to enjoy a relaxing swim in the coast or a pleasant walk along the Mediterranean shore. In addition, it is located in a quiet neighborhood, surrounded by shopping centers, schools, sports centers and supermarkets, which also offers the convenience of living just 15 minutes from the center of Palma. All the rooms of the house are designed so that you perceive its comfort surrounded by first qualities and you will find the perfect place to disconnect. The houses open to the outside through large windows, providing great luminosity and a unique atmosphere. In addition, so you can enjoy the excellent climate of the island, the living room merges with the outside through a garden with saline pool that will undoubtedly be one of the favorite places of your new home along with the solarium on deck. All homes have: fully fitted and equipped kitchen, 3 complete bathrooms (one of them en suite), 3 or 4 bedrooms (depending on your needs), master bedroom with dressing room, large private garden of up to 130 sqm, privat [...]

Palma de Mallorca / Playa de Palma

Surface  
145 m<sup>2</sup> - 148 m<sup>2</sup>  
Units  
26  
Completion  
Q4 2022

- ✓ Views
- ✓ Heating
- ✓ Furnished
- ✓ AACC
- ✓ Backyard
- ✓ Pool
- ✓ Has parking

Price from 890,000 €



(Playa de Palma)

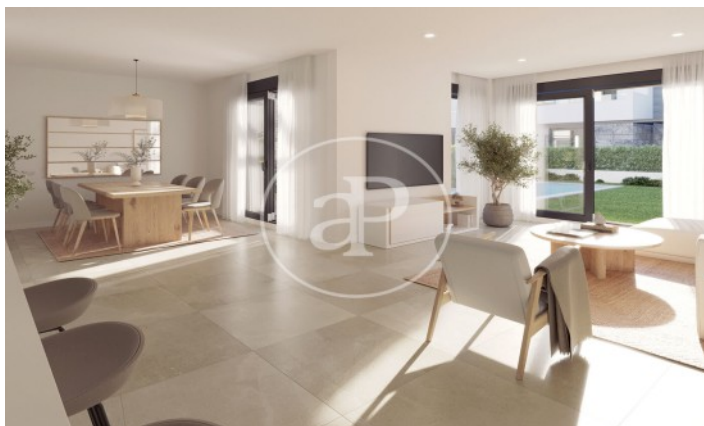
Ref: ONPM2211003

### Units in this development

Type	Unit	Surface	Terrace	Bedrooms	Bathrooms	Price	State
House	Principal	147.72 m <sup>2</sup>	45.88 m <sup>2</sup>	4	3	€ 1,120,000	Available
House	Principal	148.90 m <sup>2</sup>	44.45 m <sup>2</sup>	4	3	€ 950,000	Available
House	Principal	146.66 m <sup>2</sup>	44.35 m <sup>2</sup>	4	3	€ 890,000	Available
House	Principal	145.87 m <sup>2</sup>	44.45 m <sup>2</sup>	4	3	€ 890,000	Available
House	Principal	148.10 m <sup>2</sup>	44.45 m <sup>2</sup>	4	3	€ 0	Available

(Playa de Palma)

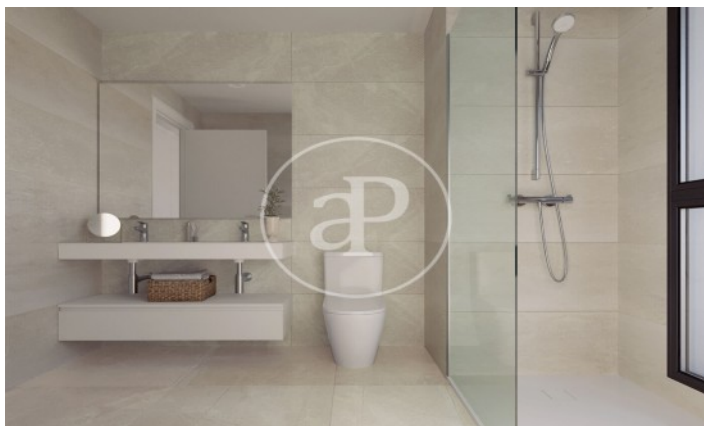
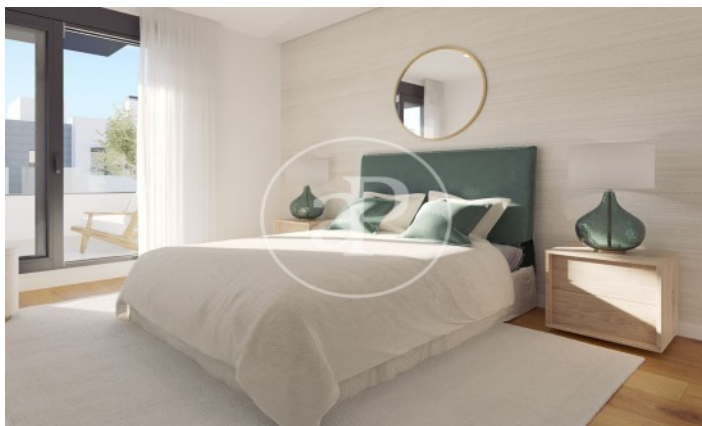
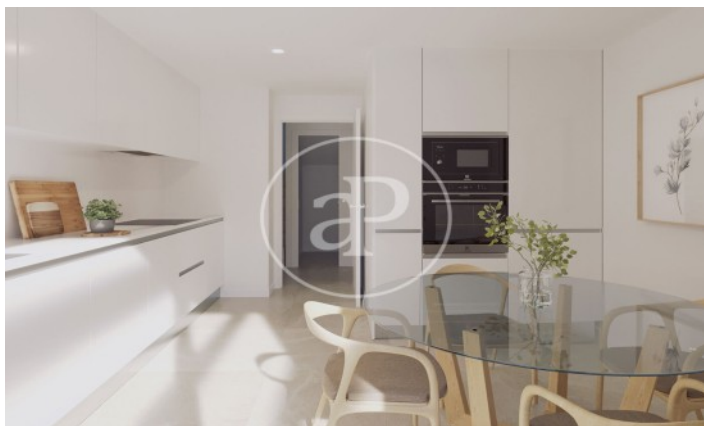
Ref: ONPM2211003





(Playa de Palma)

Ref: ONPM2211003



(Playa de Palma)

Ref: ONPM2211003



The information about any property is not binding to any offer or contract. Any verbal or written declaration made by aProperties with regards to the value or condition of the property should not be considered accurate or factual. The pictures make reference to some parts of the property at the times that they were taken. The areas, dimensions and distances that are given are approximate and should be checked by the client. The images are computer generated and are just an approximate indication of the real appearance of the property; these may change at any time. The information with regards to the property may also change at any time.

Contact us today for more information or to arrange a viewing

Tel: 871 16 01 60

[apropertiespalma@aproperties.es](mailto:apropertiespalma@aproperties.es)

<https://www.aproperties.es>