

Playa de Palma, Palma de Mallorca

REF. VPM2205027



## Detached house for sale near the sea in Palma

### Features

- ✓ Views
- ✓ Heating
- ✓ Furnished
- ✓ Boxroom
- ✓ AACC
- ✓ Terrace
- ✓ Backyard
- ✓ Has parking

Price

**760,000 €**

Surface

**215 m<sup>2</sup>**

Plot surface

**400 m<sup>2</sup>**

Bedrooms

**4**

Bathrooms

**4**



**Beautiful TYPICAL MALLORCAN HOUSE, situated in a residential area surrounded by green zones, very quiet, and very close to the beach.**

It is situated close to the German school and all amenities on a plot of approx. 400 m<sup>2</sup> with possibility to build a swimming pool. The house has two floors with very high ceilings and offers a spacious living/dining room, a modern kitchen, two bedrooms on the first floor plus two bathrooms, one bedroom plus bathroom en suite in the Tower, and in the basement a bedroom with a bathroom with shower. A covered garage offers two parking spaces. Furthermore, there is a spacious storeroom, newly installed heating with heat pump,

air-conditioning in all rooms and it is completely furnished. The house is in a perfect state of maintenance, it has no dampness or structural problems. It has a holiday rental license that currently in this area, you can take advantage of 2 months a year, but it is expected to be extended to all year round. Can you imagine living here, we are waiting for your call!

**Contact us,**  
we will be happy to assist you,  
to offer you more details and information.



Playa de Palma, Palma de Mallorca

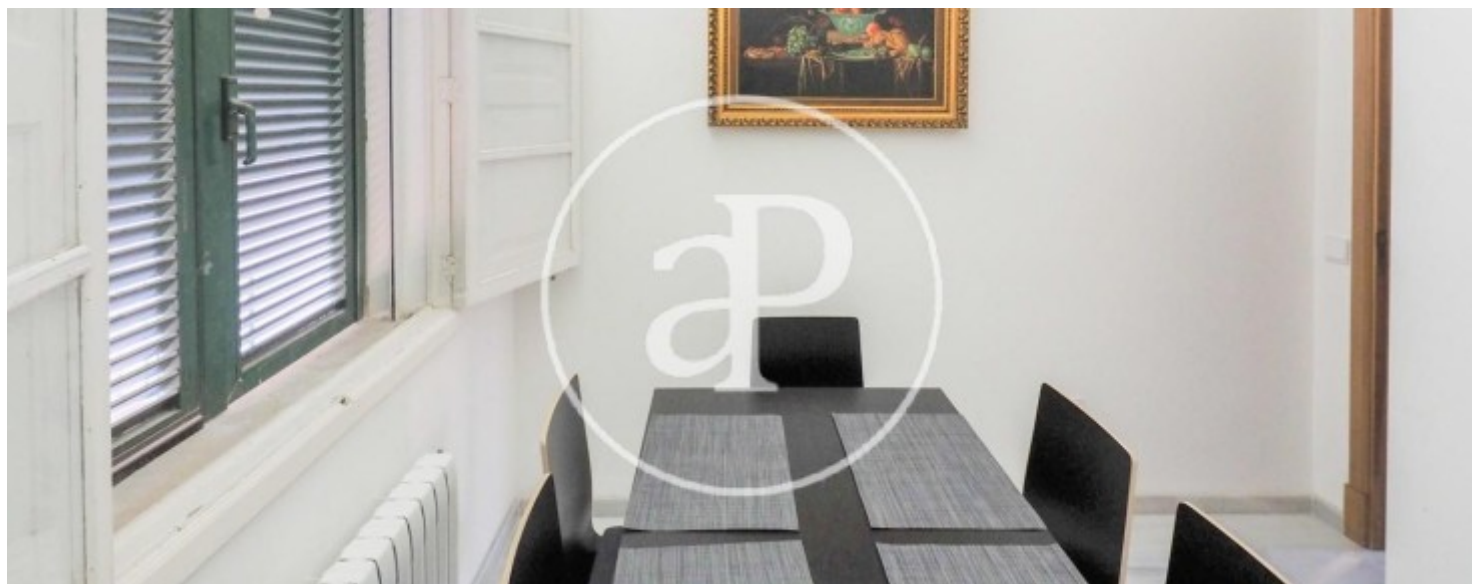
REF. VPM2205027





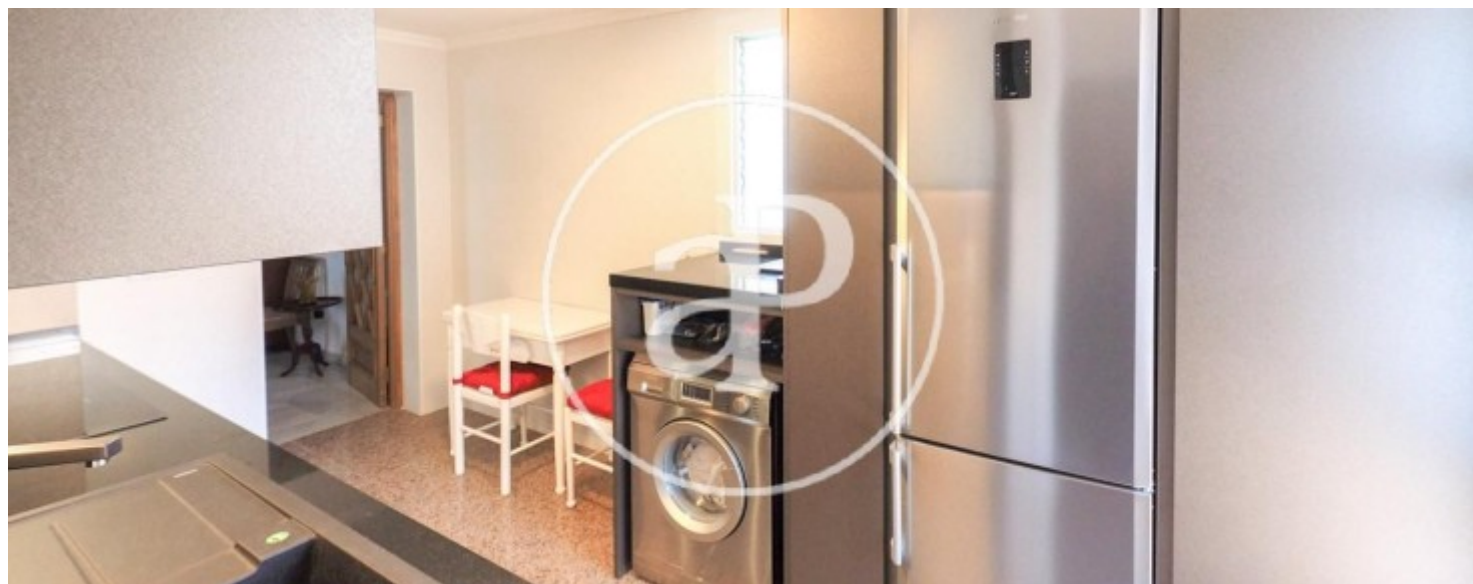
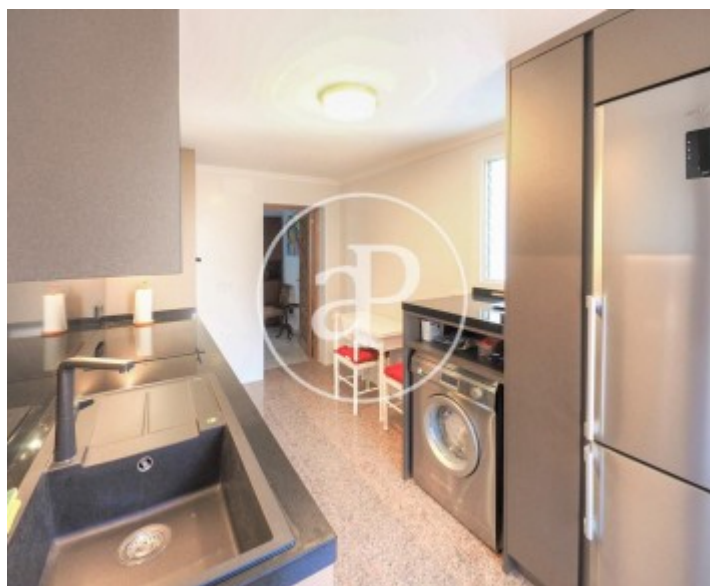
Playa de Palma, Palma de Mallorca

REF. VPM2205027



Playa de Palma, Palma de Mallorca

REF. VPM2205027





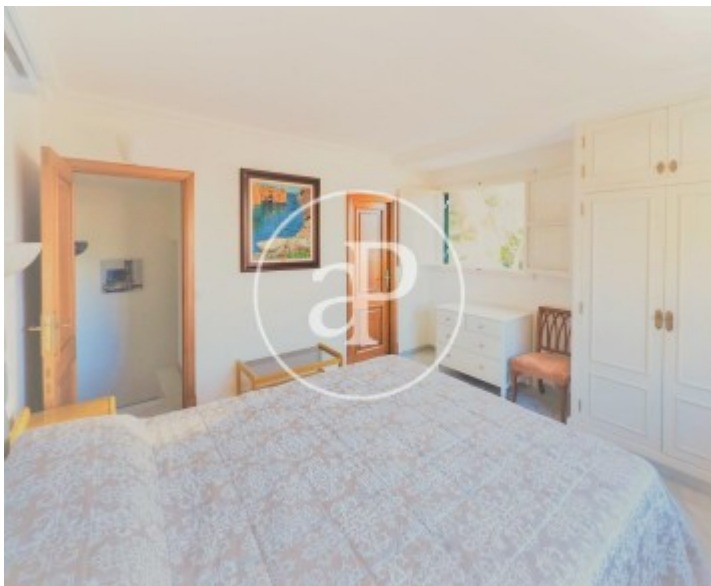


**APROPERTIES**  
REAL ESTATE

Calle Unió 9  
07001 Palma  
T. 871 16 01 60  
[www.aproperties.es](http://www.aproperties.es)

Playa de Palma, Palma de Mallorca

REF. VPM2205027



The information about any property is not binding to any offer or contract. Any verbal or written declaration made by aProperties with regards to the value or condition of the property should not be considered accurate or factual. The pictures make reference to some parts of the property at the times that they were taken. The areas, dimensions and distances that are given are approximate and should be checked by the client. The images are computer generated and are just an approximate indication of the real appearance of the property; these may change at any time. The information with regards to the property may also change at any time.



For **more information** or  
to make an appointment

[apropertiespalma@aproperties.es](mailto:apropertiespalma@aproperties.es)  
Tel: 871 16 01 60  
[www.aproperties.es](http://www.aproperties.es)