



Playa de Palma, Palma de Mallorca

REF. VPM2203035

Apartment for sale with Terrace and seaviews in Palma Beach

Features

- ✓ Views
- ✓ AACC
- ✓ Lift
- ✓ Furnished
- ✓ Terrace
- ✓ Has parking

Surface

180 m²

Bedrooms

2

Bathrooms

2

Price

640,000 €



Fotos are only examples.

The property with a surface of about 80 sqm is in process of refurbishment with high quality materials and will have two double bedrooms, one with bathroom en suite, guest bathroom, kitchen with utility room and access to a huge terrace. From the living room you have access to another large TERRACE of about 100 sqm in front line to the beach with fantastic sea views. There is air conditioning by conductors in all the rooms. A parking space is included in the price. PALMA BEACH is in the process of changing into a prestigious destination also thanks to the PALMA BEACH brand. With the name "Palma Beach", Mika Ferrer, his brother

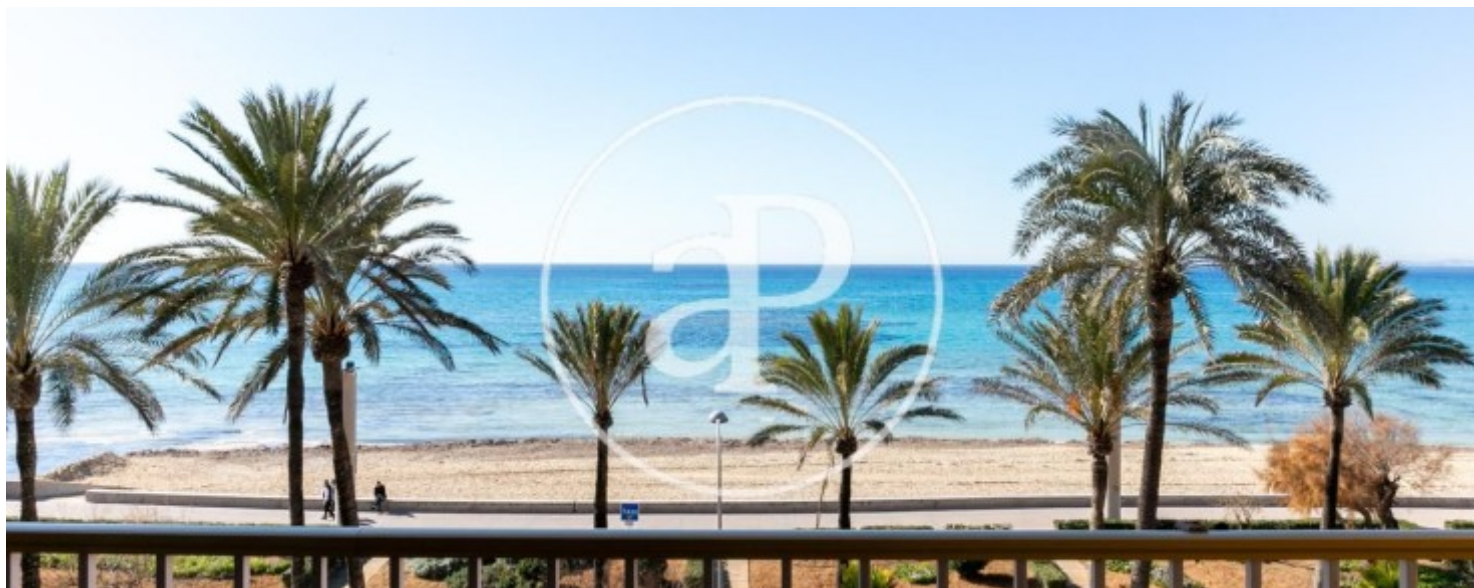
Juan Miguel and his partner want to change the sordid image it currently conveys, associated with drunkenness. To this end, they founded a year ago an affiliation and marketing company, which aims to turn Mallorca's most important hotel complex into a quality destination. Thirty-eight affiliates have joined the initiative. In addition to several bars, restaurants, the Ferrer family itself, the two golf courses of Puntiro and Son Gual and the Club Náutico El Arenal, five other Mallorcan hotel chains, including Riu and Iberostar. Currently, the flagship of Palma Beach's elegant campaign...

Contact us,

we will be happy to assist you,
to offer you more details and information.

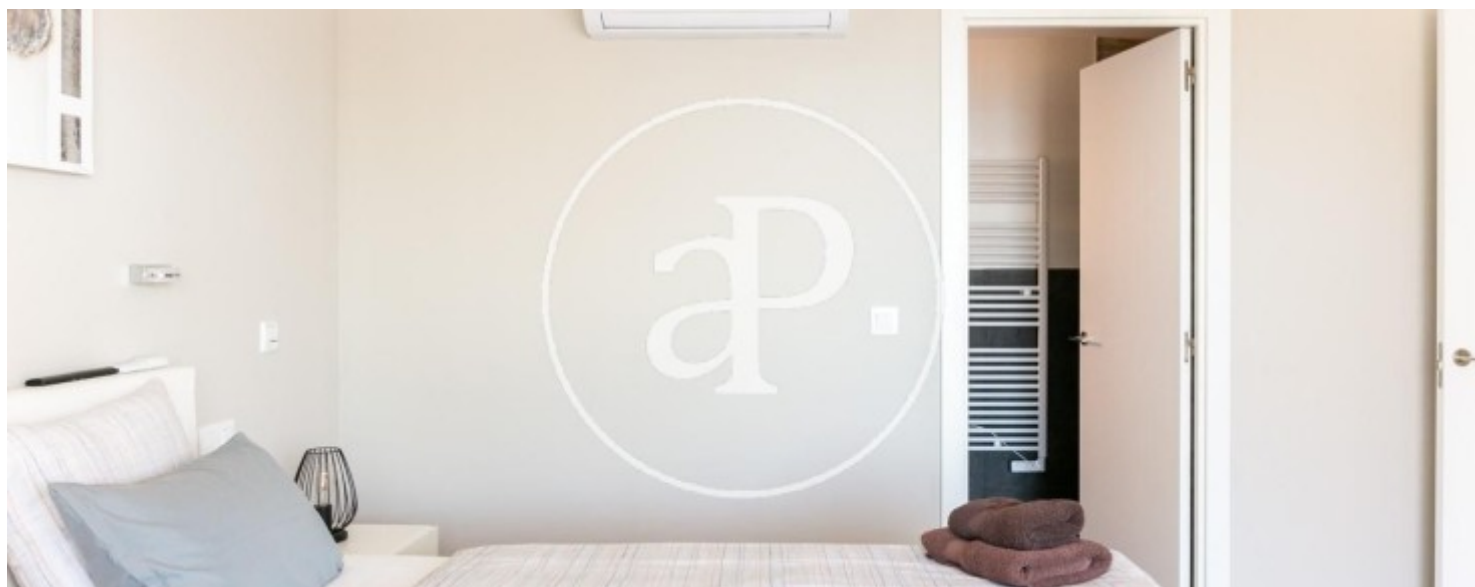
Playa de Palma, Palma de Mallorca

REF. VPM2203035



Playa de Palma, Palma de Mallorca

REF. VPM2203035



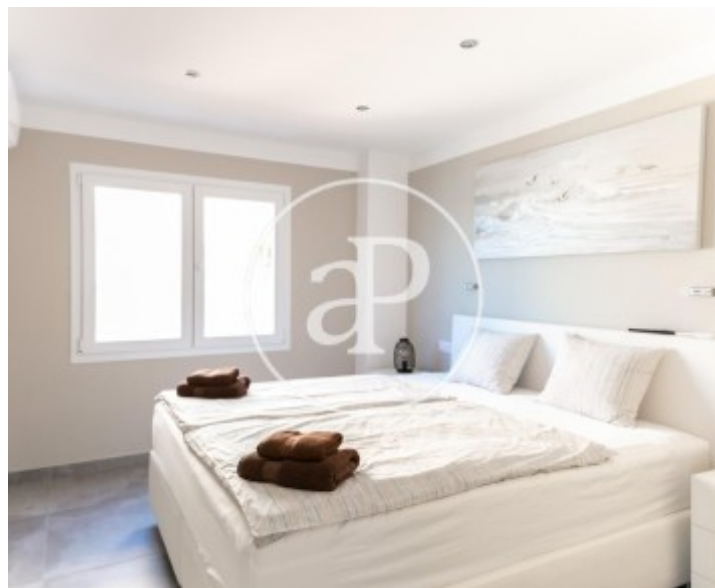
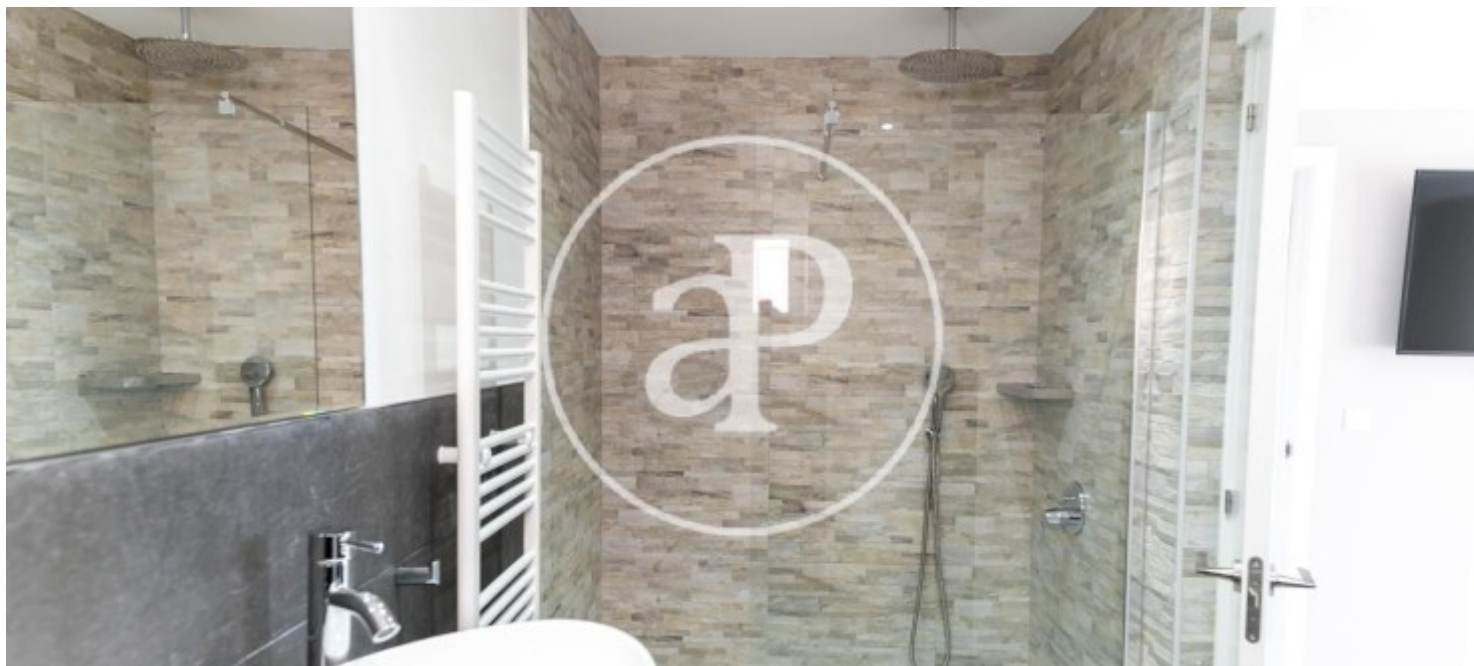
Playa de Palma, Palma de Mallorca

REF. VPM2203035



Playa de Palma, Palma de Mallorca

REF. VPM2203035



The information about any property is not binding to any offer or contract. Any verbal or written declaration made by aProperties with regards to the value or condition of the property should not be considered accurate or factual. The pictures make reference to some parts of the property at the times that they were taken. The areas, dimensions and distances that are given are approximate and should be checked by the client. The images are computer generated and are just an approximate indication of the real appearance of the property; these may change at any time. The information with regards to the property may also change at any time.

For **more information** or
to make an appointment

apropertiespalma@aproperties.es
Tel: 871 16 01 60
www.aproperties.es