



Plaça del Mercat, Palma de Mallorca

REF. APM2501003

Apartment for rent with terrace in Palma Old Town

Features

Surface

101 m²

Bedrooms

2

Bathroom

1

✓ AACC

✓ Terrace

Price

1,950 €



AVAILABLE FOR LONG TERM RENTAL

Located in the heart of Palma's historic district, this **UNFURNISHED** apartment offers a unique living experience in one of the city's most picturesque areas.

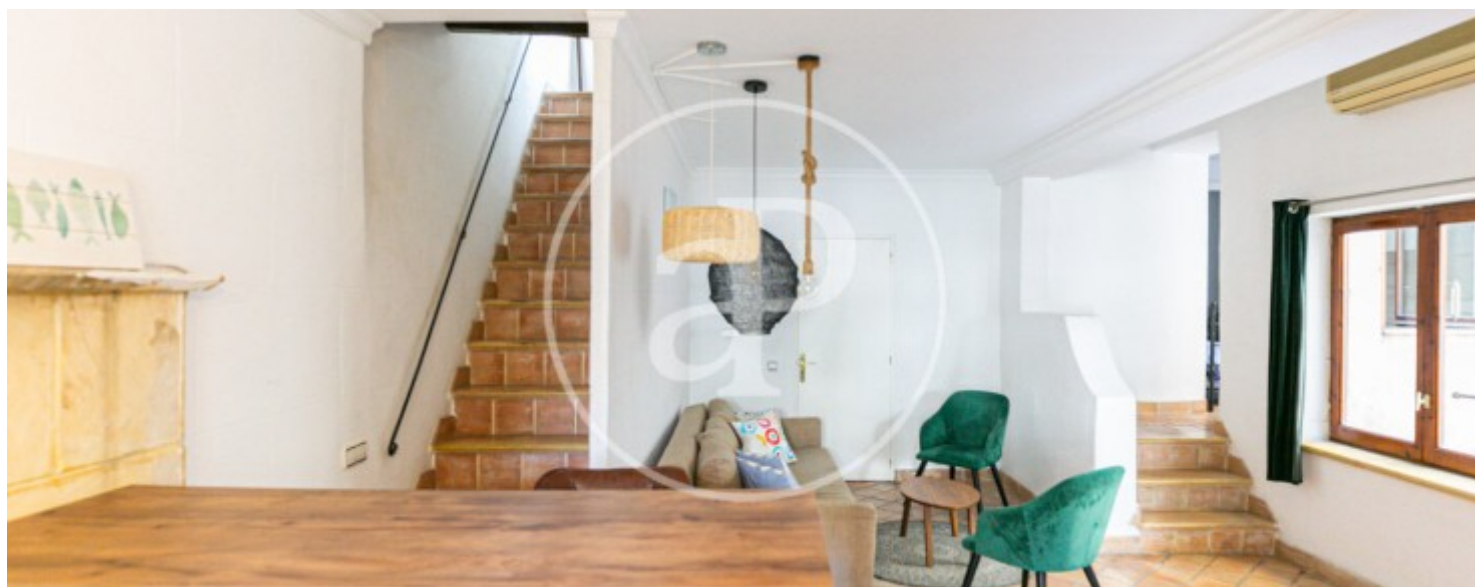
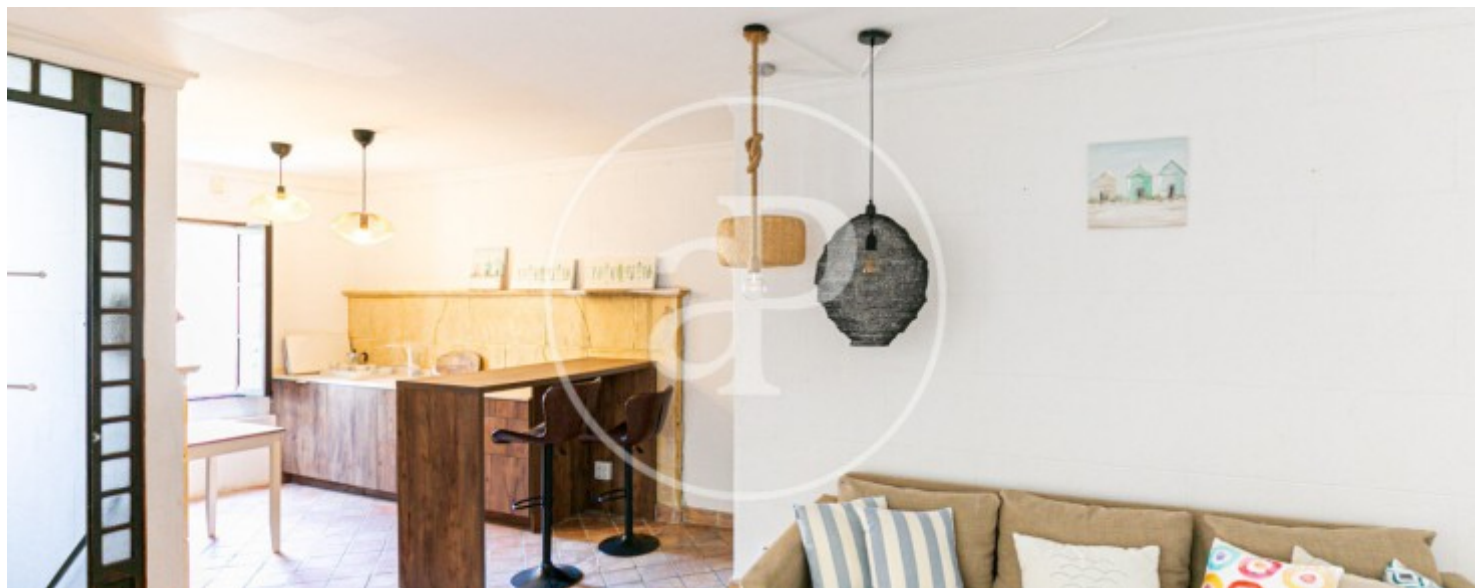
Nestled between cobblestone streets and buildings with traditional facades, this apartment represents a true opportunity to live at the heart of Palma's history. It features a spacious living room bathed in natural light, creating an ideal relaxation space for gathering with friends or family. The kitchen is fully equipped with modern appliances and everything you need to prepare delicious meals inspired by the fresh products from the local market. Just next to the living room,

you'll find an outdoor patio, perfect for enjoying al fresco dining and moments of tranquility. The apartment has two bedrooms, and it offers an elegantly designed workspace, perfect for those who embrace the concept of working from home in style. It also boasts an impressive 70 sqm terrace, an oasis in the middle of the city, where you can enjoy panoramic views. The location of this apartment is simply unbeatable, surrounded by historic sites, charming squares, cafés, local shops, and restaurants offering delicious Mediterranean cuisine. Public transportation is easily accessible,...

Contact us,
we will be happy to assist you,
to offer you more details and information.

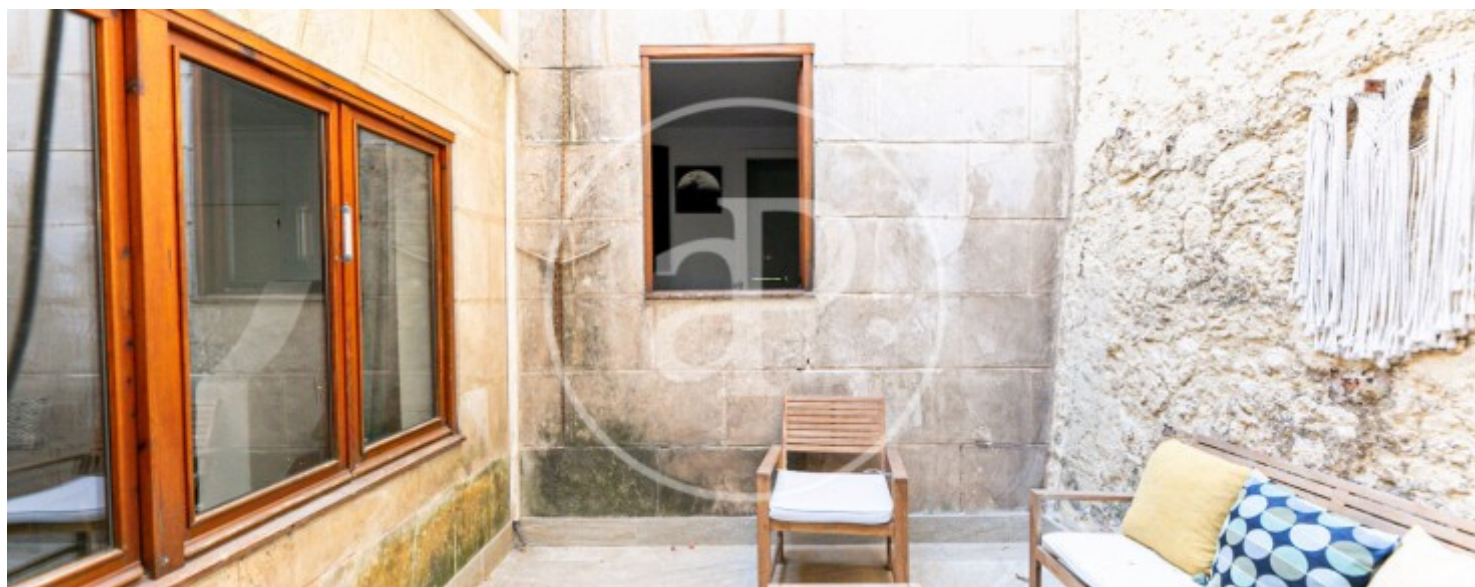
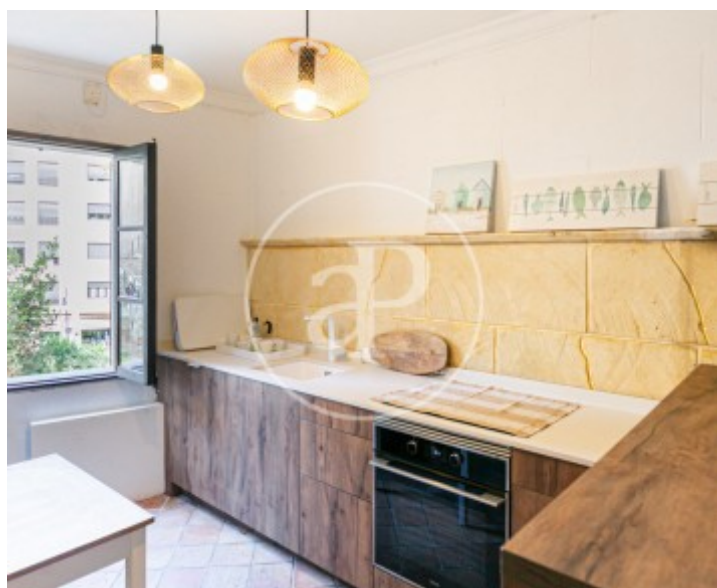
Plaça del Mercat, Palma de Mallorca

REF. APM2501003



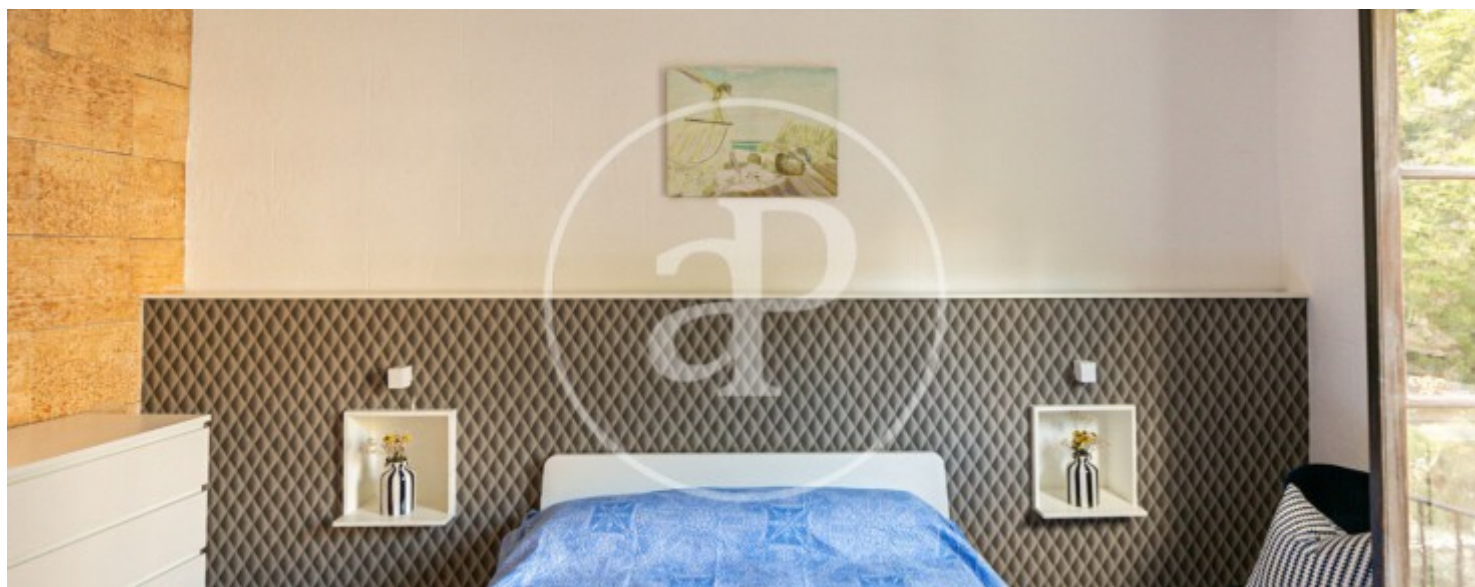
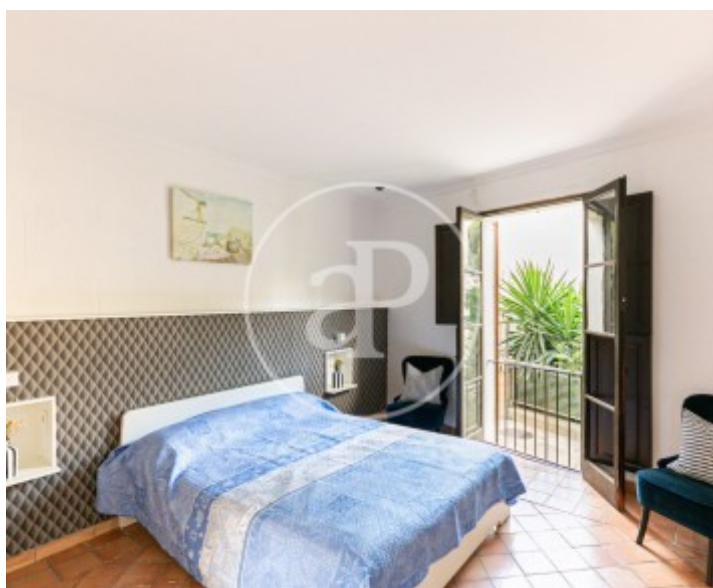
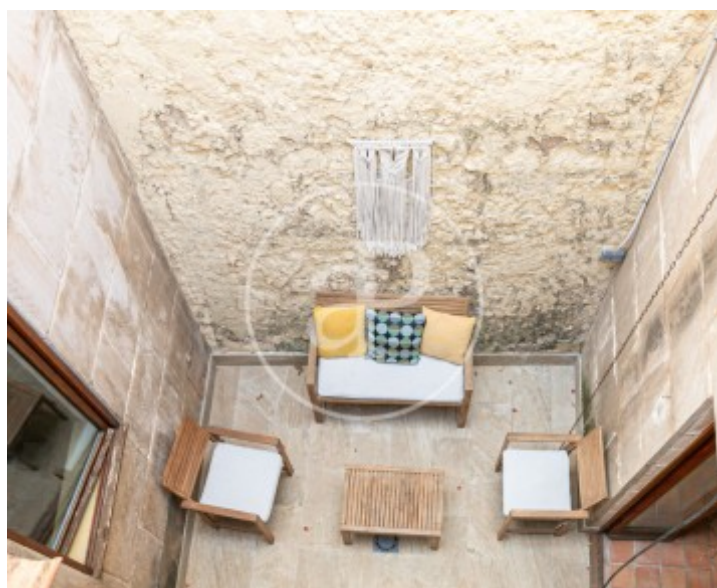
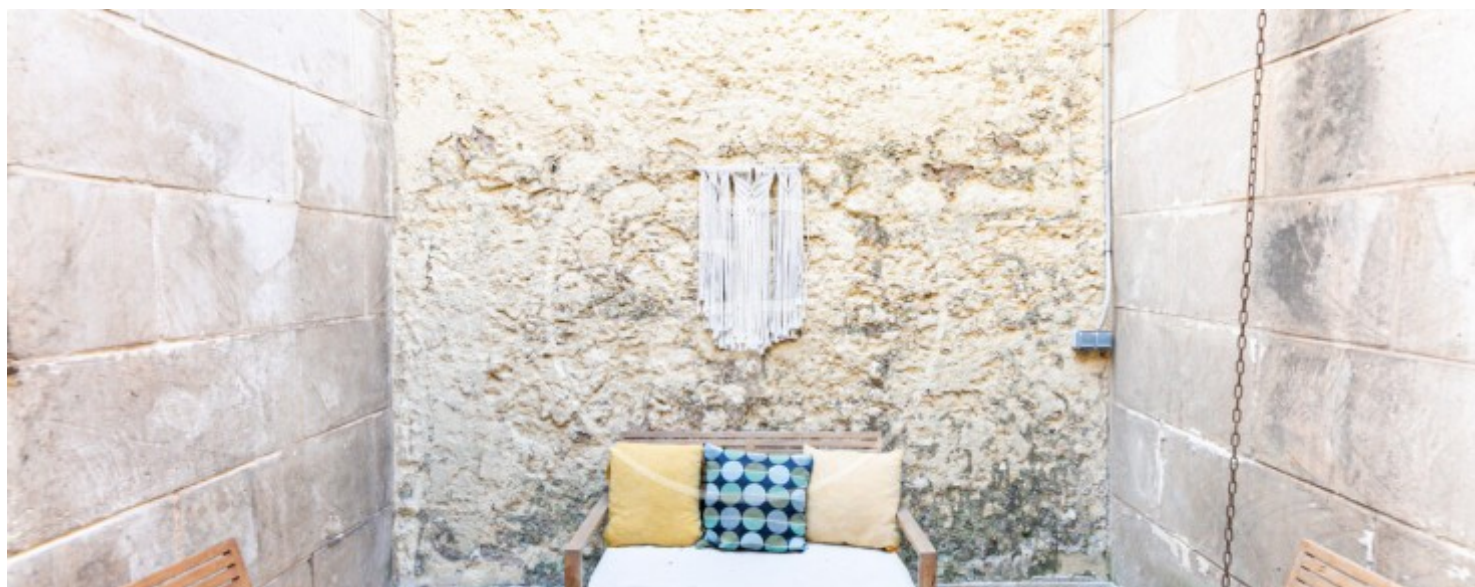
Plaça del Mercat, Palma de Mallorca

REF. APM2501003



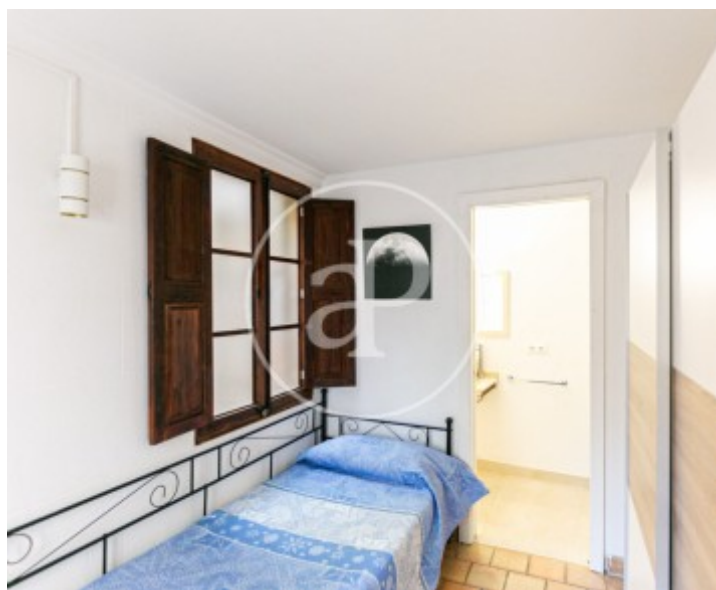
Plaça del Mercat, Palma de Mallorca

REF. APM2501003



Plaça del Mercat, Palma de Mallorca

REF. APM2501003



The information about any property is not binding to any offer or contract. Any verbal or written declaration made by aProperties with regards to the value or condition of the property should not be considered accurate or factual. The pictures make reference to some parts of the property at the times that they were taken. The areas, dimensions and distances that are given are approximate and should be checked by the client. The images are computer generated and are just an approximate indication of the real appearance of the property; these may change at any time. The information with regards to the property may also change at any time.

For **more information** or
to make an appointment

apropertiespalma@aproperties.es
Tel: 871 16 01 60
www.aproperties.es