

Pere Garau, Palma de Mallorca

REF. VPM2303016



Brand new apartment for sale in Nuredunna Street

Features

- ✓ Heating
- ✓ Boxroom
- ✓ AACC
- ✓ Terrace
- ✓ Lift

Price

690,000 €

Surface

174 m²

Bedrooms

3

Bathrooms

3



This is a modern construction located in the pedestrian street Nuredduna, in the heart of Palma de Mallorca.

The flat has been completely refurbished and has a large private terrace and high-quality finishings. The apartment is situated on the first floor and has a lift. It has a living area of 174sqm and comprises of four bedrooms, one of which can be used as an office. In addition, it has two complete bathrooms, a guest toilet, a master bedroom en suite and fitted wardrobes with LED lighting throughout. It also has an entrance hall. The kitchen has an American style with an island and laundry room. A highlight is that all rooms have hot/cold air-conditioning,

providing year-round comfort. This modern property would be perfect for a family wishing to enjoy the amenities of central Palma on the pedestrianized Nuredduna Street. The location of the property is excellent as it is well connected to the rest of the island and is close to various restaurants, shops, the airport, the cathedral and the beach of Palma. In short, this flat offers a modern lifestyle in a privileged location in Palma de Majorca. Can you imagine living here? We look forward to your call

Contact us,
we will be happy to assist you,
to offer you more details and information.

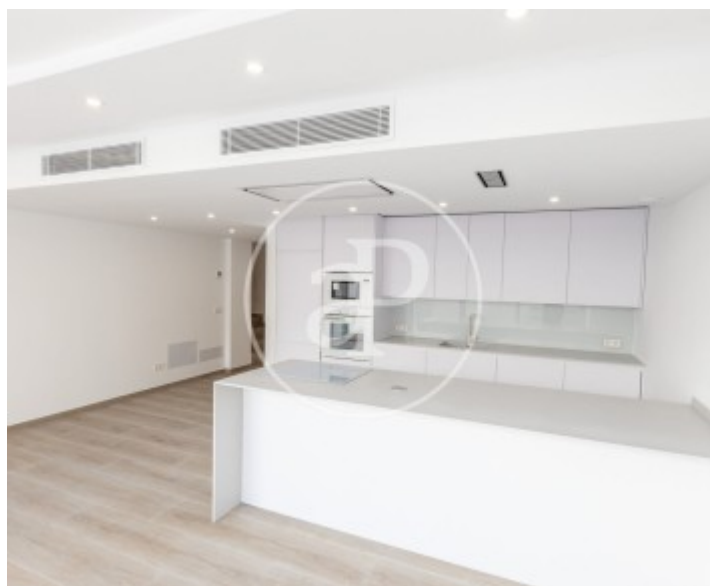
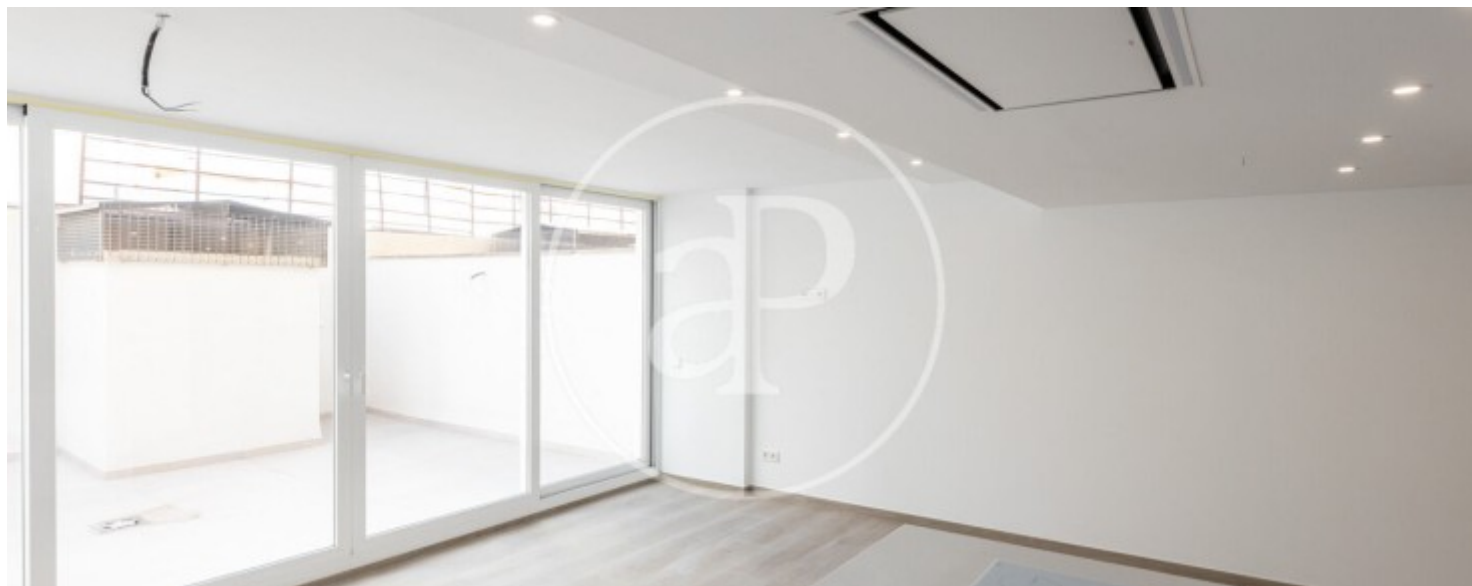
Pere Garau, Palma de Mallorca

REF. VPM2303016



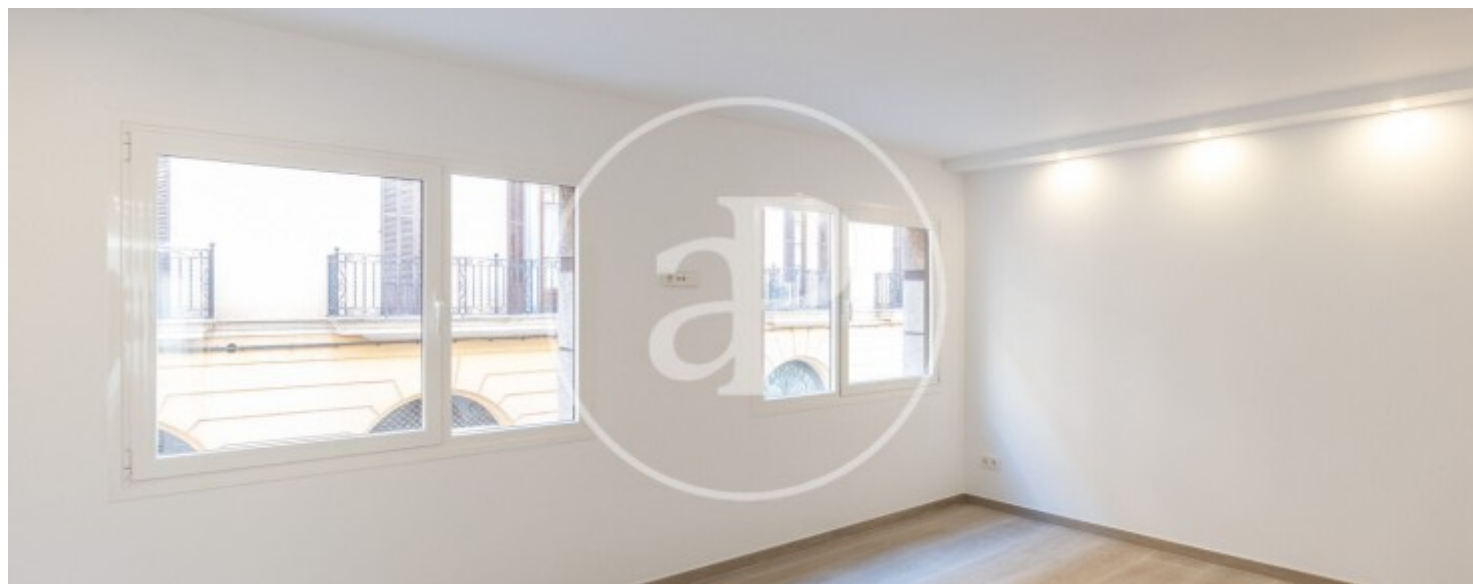
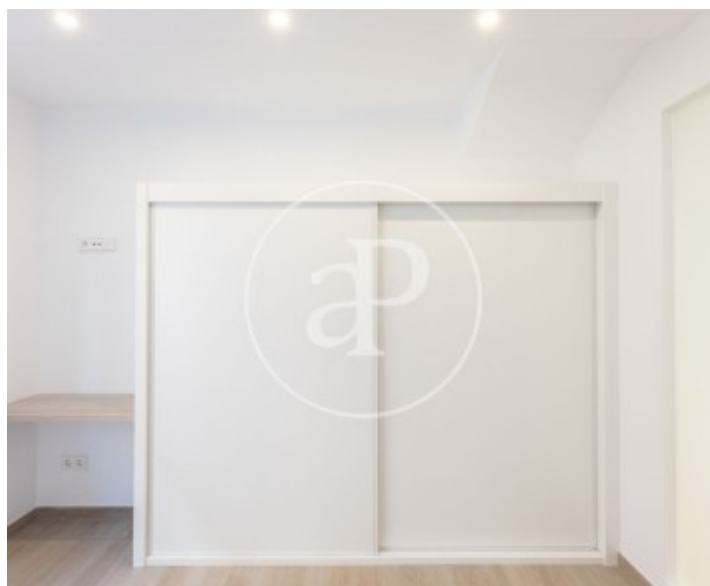
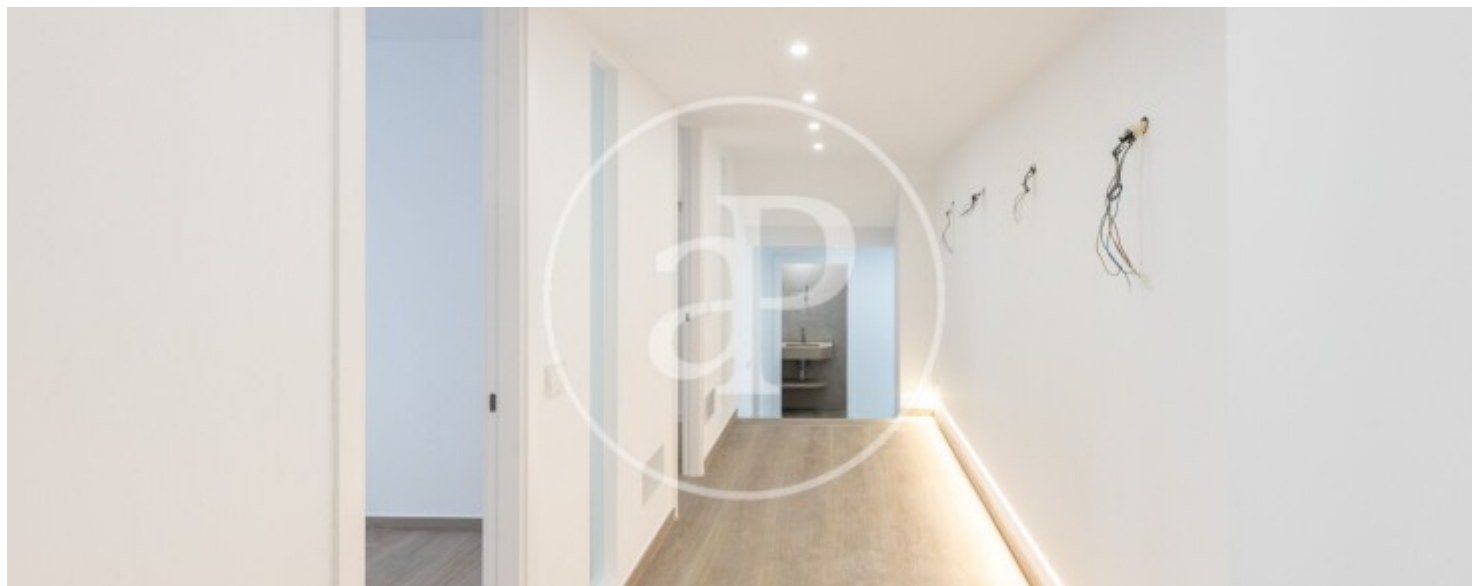
Pere Garau, Palma de Mallorca

REF. VPM2303016



Pere Garau, Palma de Mallorca

REF. VPM2303016



Pere Garau, Palma de Mallorca

REF. VPM2303016



The information about any property is not binding to any offer or contract. Any verbal or written declaration made by aProperties with regards to the value or condition of the property should not be considered accurate or factual. The pictures make reference to some parts of the property at the times that they were taken. The areas, dimensions and distances that are given are approximate and should be checked by the client. The images are computer generated and are just an approximate indication of the real appearance of the property; these may change at any time. The information with regards to the property may also change at any time.



For **more information** or
to make an appointment

apropertiespalma@aproperties.es
Tel: 871 16 01 60
www.aproperties.es