

La Vileta, Palma de Mallorca

REF. ONPM2604004

Penthouse for sale in La Vileta

Features

- ✓ Views
- ✓ Heating
- ✓ Boxroom
- ✓ AACC
- ✓ Terrace
- ✓ Backyard
- ✓ Pool
- ✓ Lift
- ✓ Has parking

Surface

118 m²

Bedrooms

3

Bathrooms

2



Price

1,075,000 €

This magnificent newly built penthouse in La Vileta, Palma de Mallorca is designed to offer a more open, bright, and outdoor-connected way of living.

An ideal home for those who value contemporary design, comfort, and the privilege of having large private terraces in a highly attractive residential location. With approximately 90 sqm of built area, the property offers a particularly comfortable layout, with 3 bedrooms, 2 full bathrooms, a separate utility room, a hallway, and a spacious living area consisting of an open-plan living-dining-kitchen designed to enhance visual openness and shared living. The interior layout includes approximately: 36 sqm

living-dining-kitchen area, 14 sqm master bedroom, 10 sqm second bedroom, 11 sqm third bedroom, 5 sqm main bathroom, 4 sqm second bathroom, and a separate utility room. Regarding the exterior, this penthouse enjoys an approximately 18 sqm main-level terrace, perfect for outdoor dining, reading, or relaxing, as well as an extraordinary approximately 66 sqm private upper solarium, which significantly expands the usable space and turns the home into a true premium residential experience. The project's design philosophy embraces an elegant, warm, and functional home, with carefully crafted...

Contact us,
we will be happy to assist you,
to offer you more details and information.

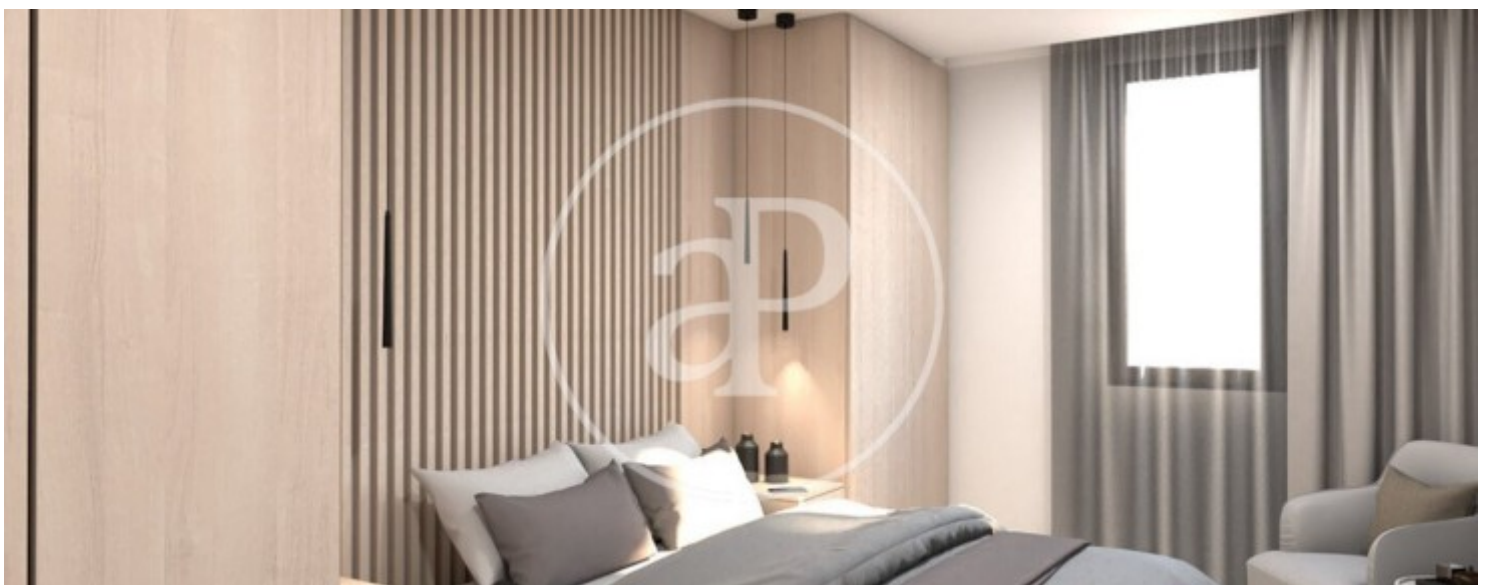
La Vileta, Palma de Mallorca

REF. ONPM2604004



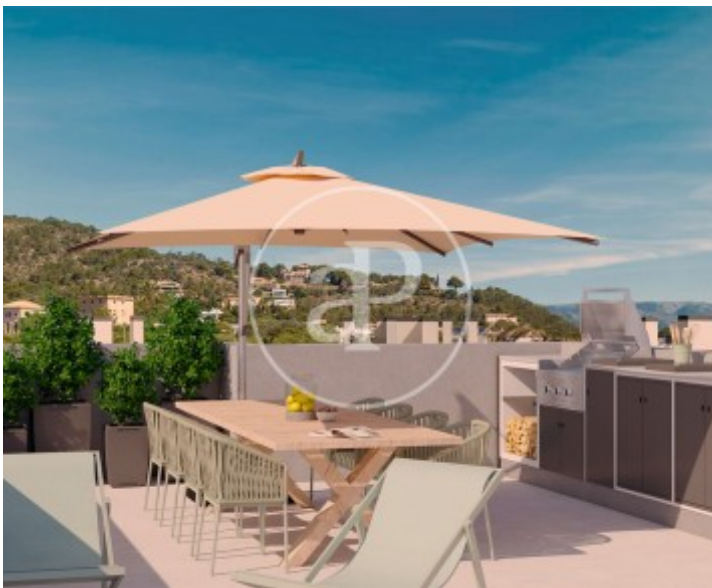
La Vileta, Palma de Mallorca

REF. ONPM2604004



La Vileta, Palma de Mallorca

REF. ONPM2604004



The information about any property is not binding to any offer or contract. Any verbal or written declaration made by aProperties with regards to the value or condition of the property should not be considered accurate or factual. The pictures make reference to some parts of the property at the times that they were taken. The areas, dimensions and distances that are given are approximate and should be checked by the client. The images are computer generated and are just an approximate indication of the real appearance of the property; these may change at any time. The information with regards to the property may also change at any time.

For **more information** or
to make an appointment

apropertiespalma@aproperties.es
Tel: 871 16 01 60
www.aproperties.es