

La Vileta, Palma de Mallorca

REF. ONPM2604002

# Penthouse for sale in La Vileta

## Features

- ✓ Views
- ✓ Heating
- ✓ Boxroom
- ✓ AACC
- ✓ Terrace
- ✓ Backyard
- ✓ Pool
- ✓ Lift
- ✓ Has parking

Surface

**118 m<sup>2</sup>**

Bedrooms

**3**

Bathrooms

**2**



Price

**1,075,000 €**

**This sophisticated newly built penthouse in La Vileta, Palma de Mallorca, represents the perfect balance between design, functionality, and well-being.**

A home designed for those seeking a modern, well-distributed property with spectacular private outdoor space to enjoy the Mediterranean lifestyle. The property offers approximately 90 sqm of built area, with a highly comfortable and efficient layout: 3 bedrooms, 2 full bathrooms, a separate utility room, a hallway, and a spacious main living area with an integrated living-dining-kitchen space. The property includes approximately: 36 sqm living-dining-kitchen area, 14 sqm master bedroom, 10 sqm second bedroom, 11 sqm

third bedroom, 5 sqm main bathroom, 4 sqm second bathroom, and a separate utility room. Outdoors, this penthouse features an approximately 15 sqm terrace on the main level, ideal for creating a pleasant outdoor corner connected to the home, as well as an impressive private upper solarium of approximately 66 sqm — a privileged space to enjoy the sun, set up a lounge area, an outdoor kitchen, or a private wellness space. The development has been designed with a refined contemporary aesthetic, using quality materials and creating a warm and sophisticated atmosphere. Its main features and...

**Contact us,**  
we will be happy to assist you,  
to offer you more details and information.

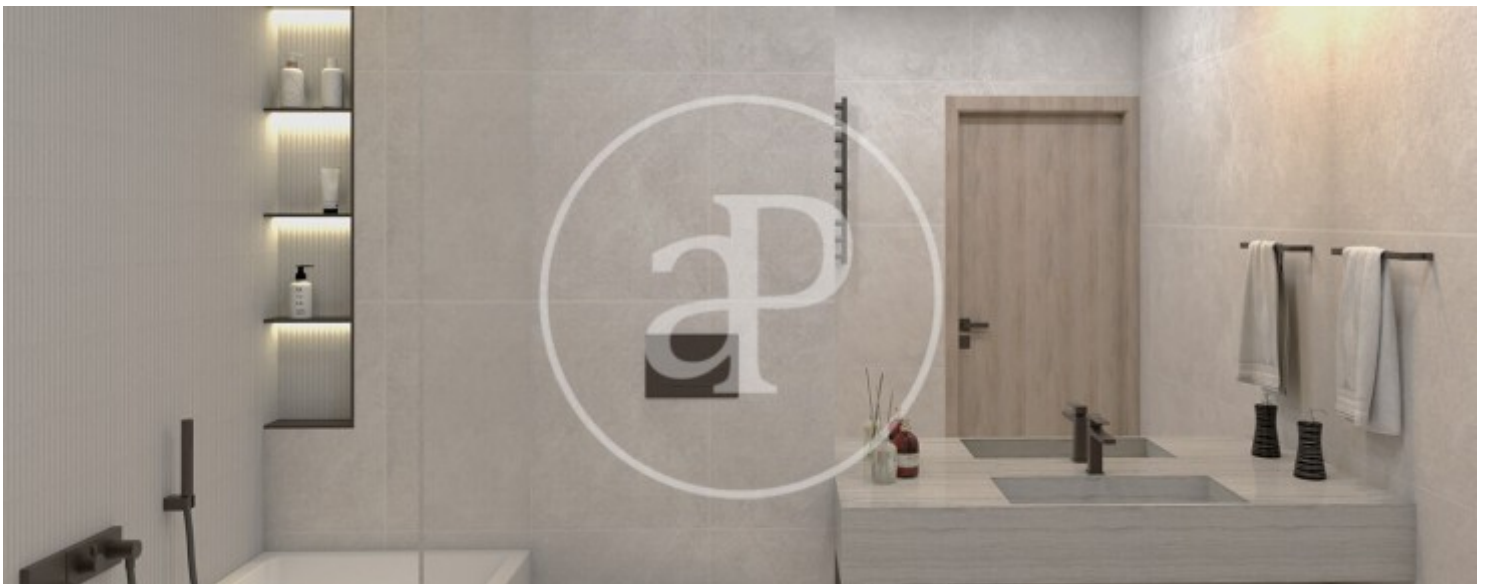
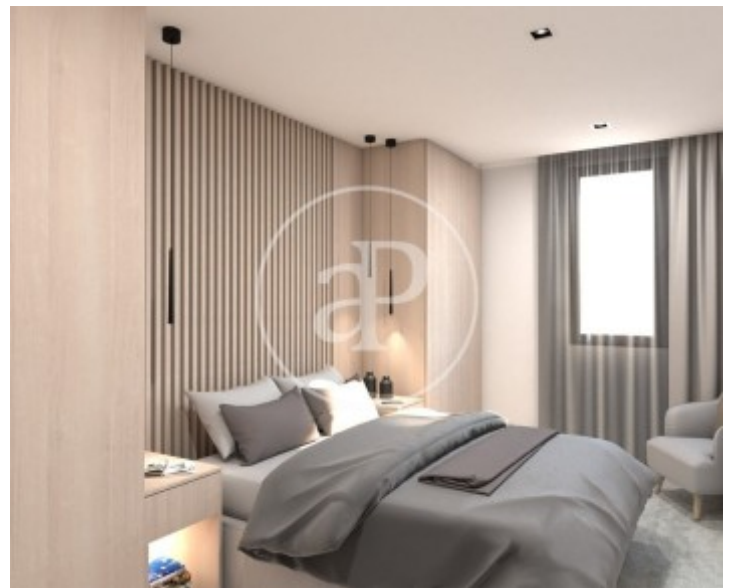
La Vileta, Palma de Mallorca

REF. ONPM2604002



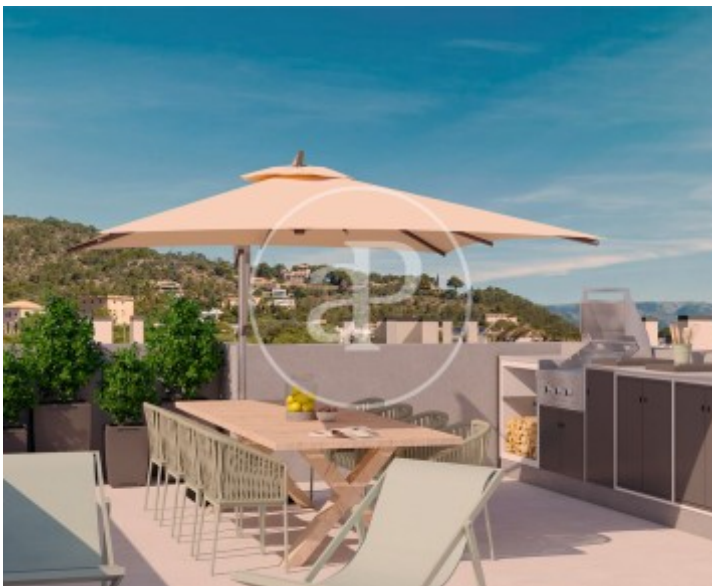
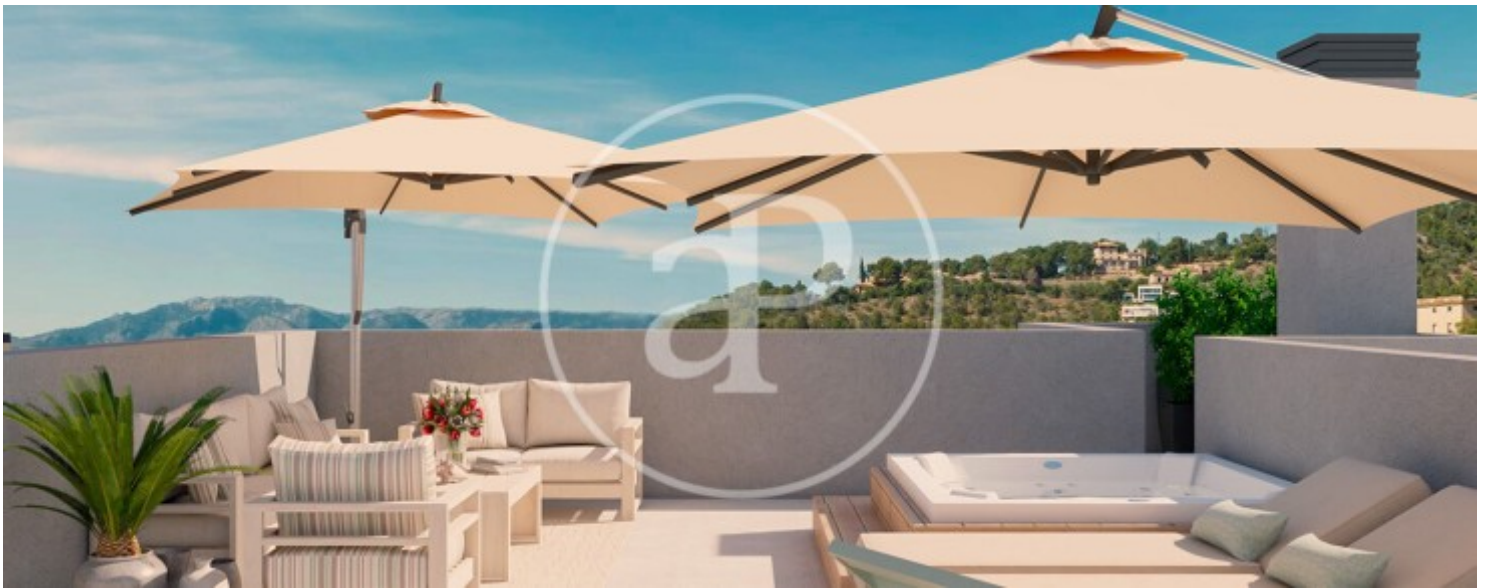
La Vileta, Palma de Mallorca

REF. ONPM2604002



La Vileta, Palma de Mallorca

REF. ONPM2604002



The information about any property is not binding to any offer or contract. Any verbal or written declaration made by aProperties with regards to the value or condition of the property should not be considered accurate or factual. The pictures make reference to some parts of the property at the times that they were taken. The areas, dimensions and distances that are given are approximate and should be checked by the client. The images are computer generated and are just an approximate indication of the real appearance of the property; these may change at any time. The information with regards to the property may also change at any time.

For **more information** or  
to make an appointment

[apropertiespalma@aproperties.es](mailto:apropertiespalma@aproperties.es)  
Tel: 871 16 01 60  
[www.aproperties.es](http://www.aproperties.es)