

La Seu, Palma de Mallorca

REF. APM2511013

# Flat for rent in central Palma

## Features

- ✓ Views
- ✓ AACC
- ✓ Lift
- ✓ Has parking
- ✓ Heating
- ✓ Terrace
- ✓ Concierge

Surface

**230 m<sup>2</sup>**

Bedrooms

**4**

Bathrooms

**4**

Price

**3,600 €**



**This spectacular 230 m<sup>2</sup> flat is located in a privileged area, just a few steps from the iconic Palma Cathedral, offering unobstructed views and a layout designed for maximum comfort.**

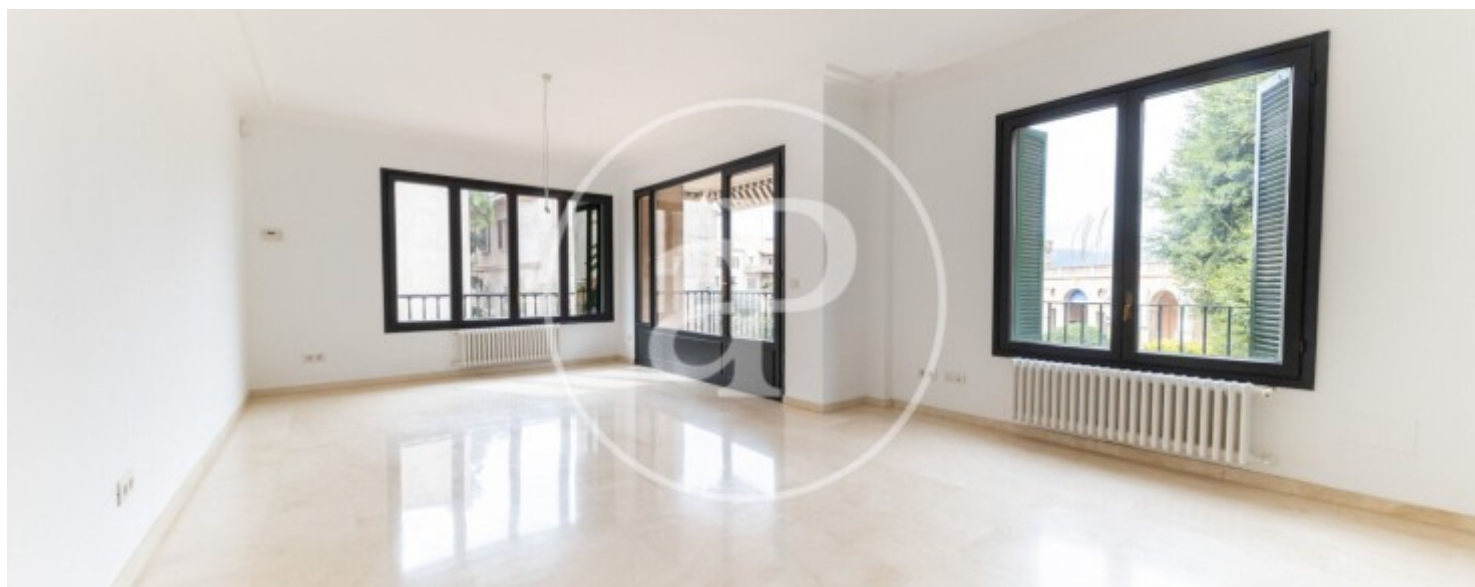
Upon entering, you find an elegant hallway leading to the day area, which includes a dining room with a fireplace adding warmth to the space, a spacious and bright living room with large windows opening onto a terrace with unobstructed views, and an open area ideal for a library or second living room, as well as a guest toilet. The independent kitchen is fully furnished and equipped, with enough space to include a breakfast table, and from it, you can access the laundry room and a

service room with a full bathroom and bathtub. The night area consists of three double bedrooms with built-in wardrobes and two full bathrooms, one of them en suite with shower and bathtub. The property features marble floors, double-glazed windows, blinds, ducted and split air conditioning, gas heating, and a large parking space in the same building. Community fees and property tax (IBI) are included in the rental price, while other utilities are the tenant's responsibility. Its excellent location, very close to the Paseo Marítimo, the well-known Jaime III shopping area, and...

**Contact us,**  
we will be happy to assist you,  
to offer you more details and information.

La Seu, Palma de Mallorca

REF. APM2511013



La Seu, Palma de Mallorca

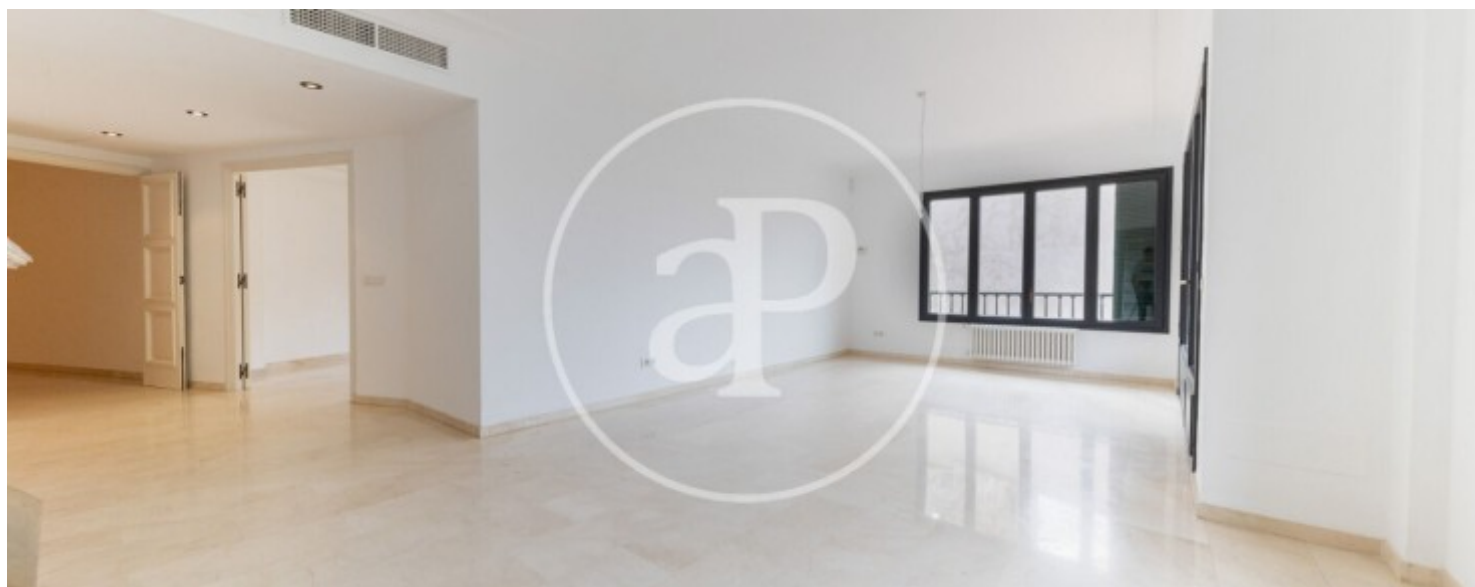
REF. APM2511013





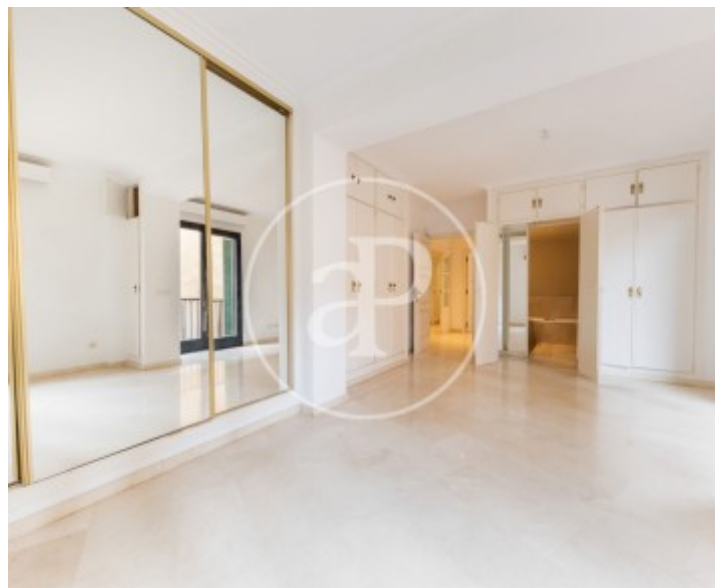
La Seu, Palma de Mallorca

REF. APM2511013



La Seu, Palma de Mallorca

REF. APM2511013



The information about any property is not binding to any offer or contract. Any verbal or written declaration made by aProperties with regards to the value or condition of the property should not be considered accurate or factual. The pictures make reference to some parts of the property at the times that they were taken. The areas, dimensions and distances that are given are approximate and should be checked by the client. The images are computer generated and are just an approximate indication of the real appearance of the property; these may change at any time. The information with regards to the property may also change at any time.

For **more information** or  
to make an appointment

[apropertiespalma@aproperties.es](mailto:apropertiespalma@aproperties.es)  
Tel: 871 16 01 60  
[www.aproperties.es](http://www.aproperties.es)