

La Missió, Palma de Mallorca

REF. APMS2511014

Penthouse for rent in La Misió

Features

- ✓ Views
- ✓ Heating
- ✓ Furnished
- ✓ Boxroom
- ✓ AACC
- ✓ Terrace
- ✓ Lift
- ✓ Has parking

Surface

145 m²

Bedrooms

2

Bathrooms

2

Price

3,800 €



In the highly sought-after area of La Misió, very close to the Ramblas, we find this 145 m² penthouse that combines spaciousness, natural light, and modern design with warm touches.

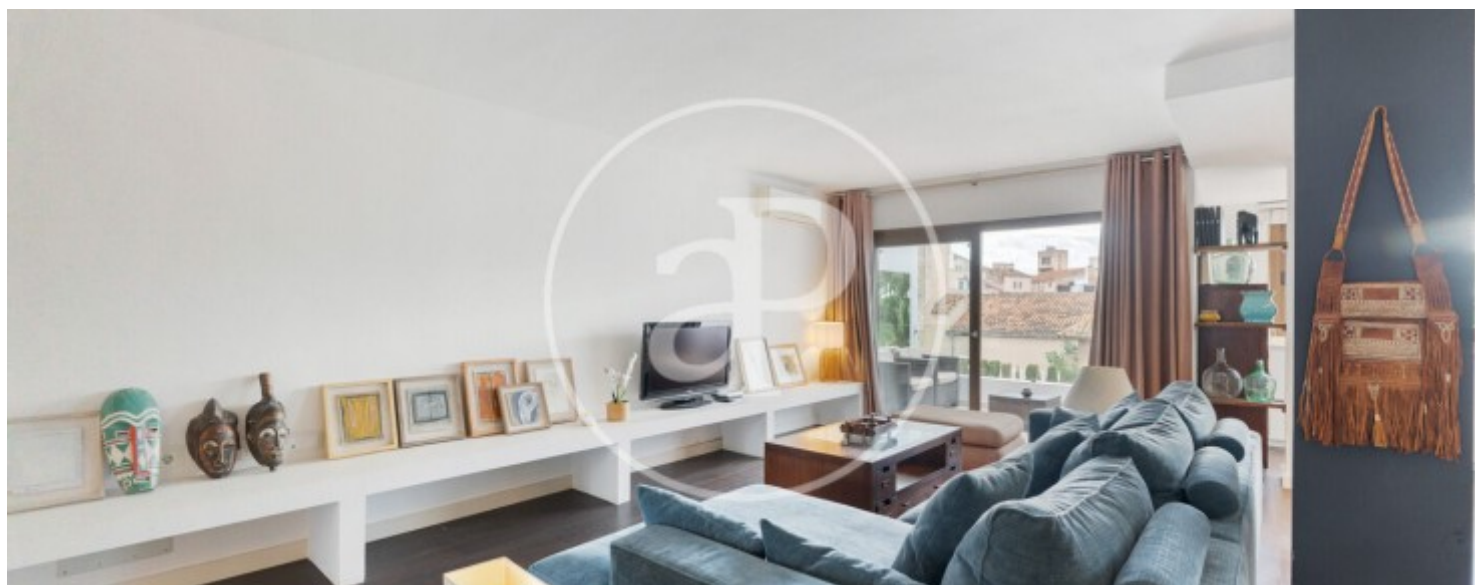
It features a 10 m² terrace with unobstructed views, perfect for enjoying the Mediterranean climate. The living-dining room, spacious and bright with direct access to the terrace, stands out for its contemporary and cozy style, with a carefully selected mix of furniture and decorative details that add personality: blue sofas, a natural wood coffee table, and unique pieces that create an elegant and relaxed atmosphere. Lighting plays a key role as well, with designer lamps

that provide warmth and character. The open-plan kitchen is minimalist and functional, with white cabinets, integrated appliances, and a central wooden island that adds contrast and sophistication. It is a space designed to enjoy both daily life and informal gatherings. The bedrooms follow the same aesthetic line: the main bedroom with an en-suite bathroom with bathtub and built-in wardrobes combines neutral tones with a dark gray accent wall that adds depth, while the second bedroom offers a versatile environment, ideal as a bedroom or office, with natural fiber details and colorful textiles....

Contact us,
we will be happy to assist you,
to offer you more details and information.

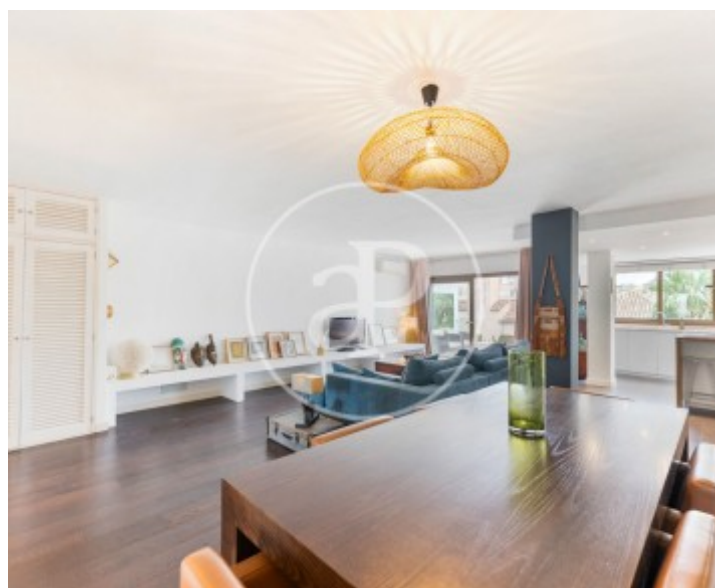
La Missió, Palma de Mallorca

REF. APMS2511014



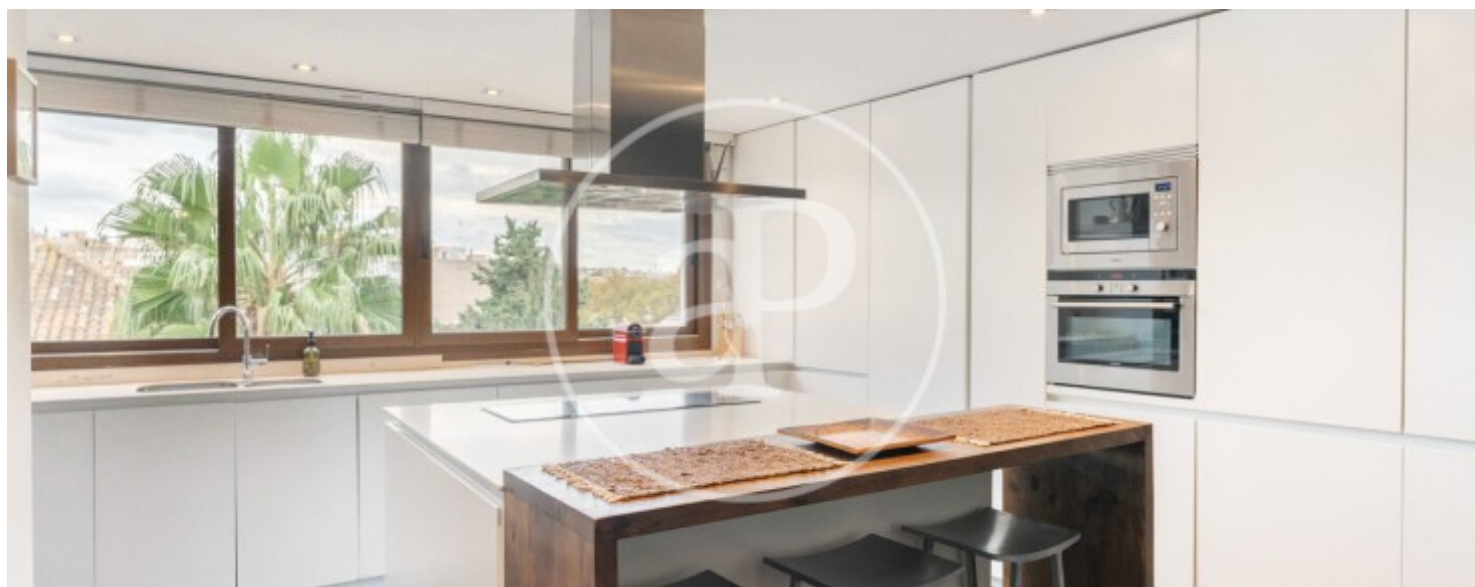
La Missió, Palma de Mallorca

REF. APMS2511014



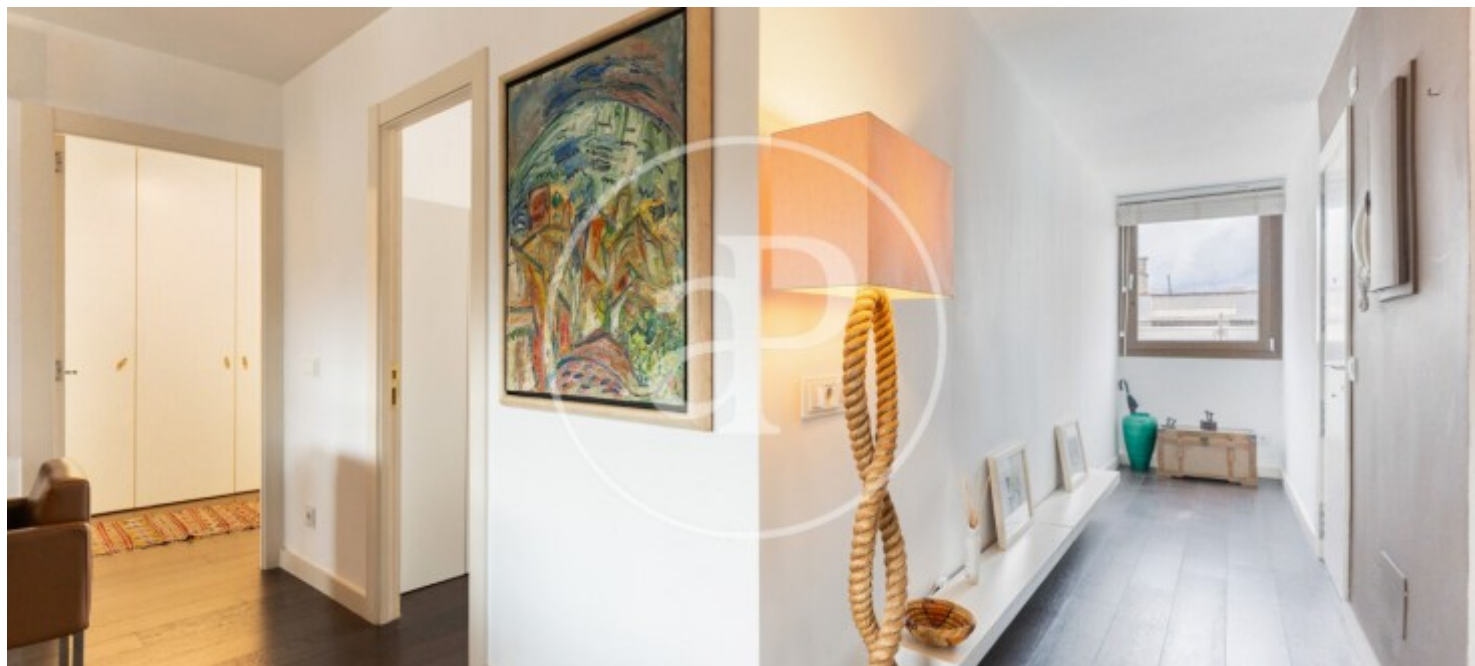
La Missió, Palma de Mallorca

REF. APMS2511014



La Missió, Palma de Mallorca

REF. APMS2511014



The information about any property is not binding to any offer or contract. Any verbal or written declaration made by aProperties with regards to the value or condition of the property should not be considered accurate or factual. The pictures make reference to some parts of the property at the times that they were taken. The areas, dimensions and distances that are given are approximate and should be checked by the client. The images are computer generated and are just an approximate indication of the real appearance of the property; these may change at any time. The information with regards to the property may also change at any time.

For **more information** or
to make an appointment

apropertiespalma@aproperties.es
Tel: 871 16 01 60
www.aproperties.es